

200 INDUSTRIAL DRIVE

FREDONIA, WI



FOR SALE OR FOR LEASE

CODY ZIEGLER
Real Estate Advisor
+1 262 844 5027
cziegler@boerke.com

STEVE STYZA
Real Estate Advisor
+1 414 573 1414
sstyza@boerke.com

TERRY McMAHON, SIOR
Principal
+1 414 203 3047
tcmahon@boerke.com



**CUSHMAN &
WAKEFIELD**

BOERKE

200 INDUSTRIAL DRIVE
Executive Summary



**Prior FDA
certification**

**Up to 38'7"
Clear Height**

**125,320 SF
Expansion in
2021**

**Partially Air-
Conditioned
Manufacturing
Warehouse**



PROPERTY DETAILS

Building Size:	316,550 SF
Available SF:	62,500 - 316,550 SF
Office Space:	13,560 SF
Site Size:	12.00 Acres
Zoning:	M-2
Clear Height:	Up to 38'7"
Loading:	16 Docks 2 Drive-In Doors
Sprinkler:	Wet
Power:	TBV
Lighting:	Motion Sensor LED
Parking:	147 Stalls
Availability:	Immediate



ECONOMICS

Sale Price:	\$19,044,000 (\$60/SF)
Lease Rate:	\$6.00/SF NNN
2024 Taxes:	\$133,190.55 (\$0.41/SF)



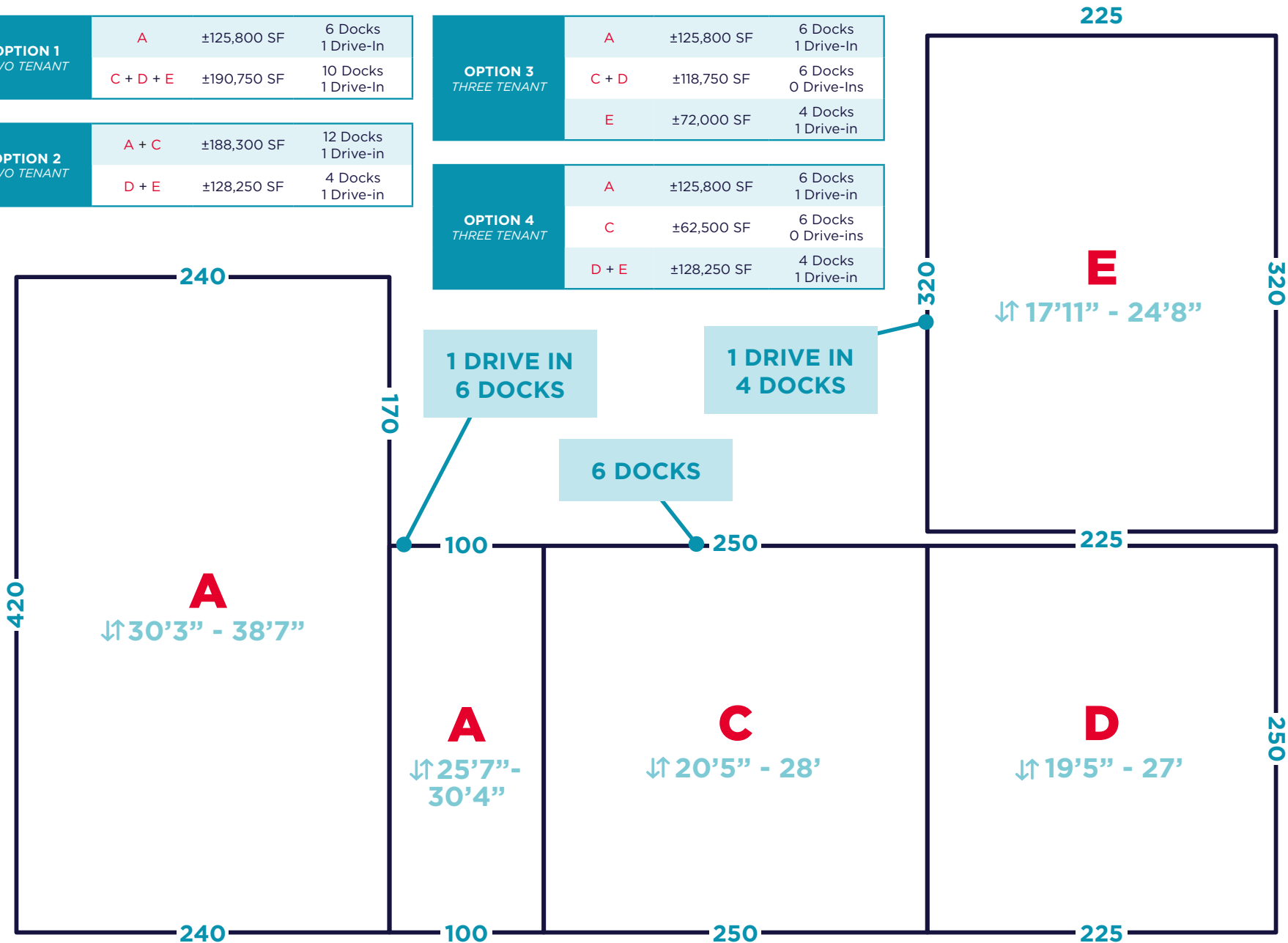
MULTI-TENANT OPTIONS

OPTION 1 TWO TENANT	A	±125,800 SF	6 Docks 1 Drive-In
	C + D + E	±190,750 SF	10 Docks 1 Drive-In

OPTION 2 TWO TENANT	A + C	±188,300 SF	12 Docks 1 Drive-in
	D + E	±128,250 SF	4 Docks 1 Drive-in

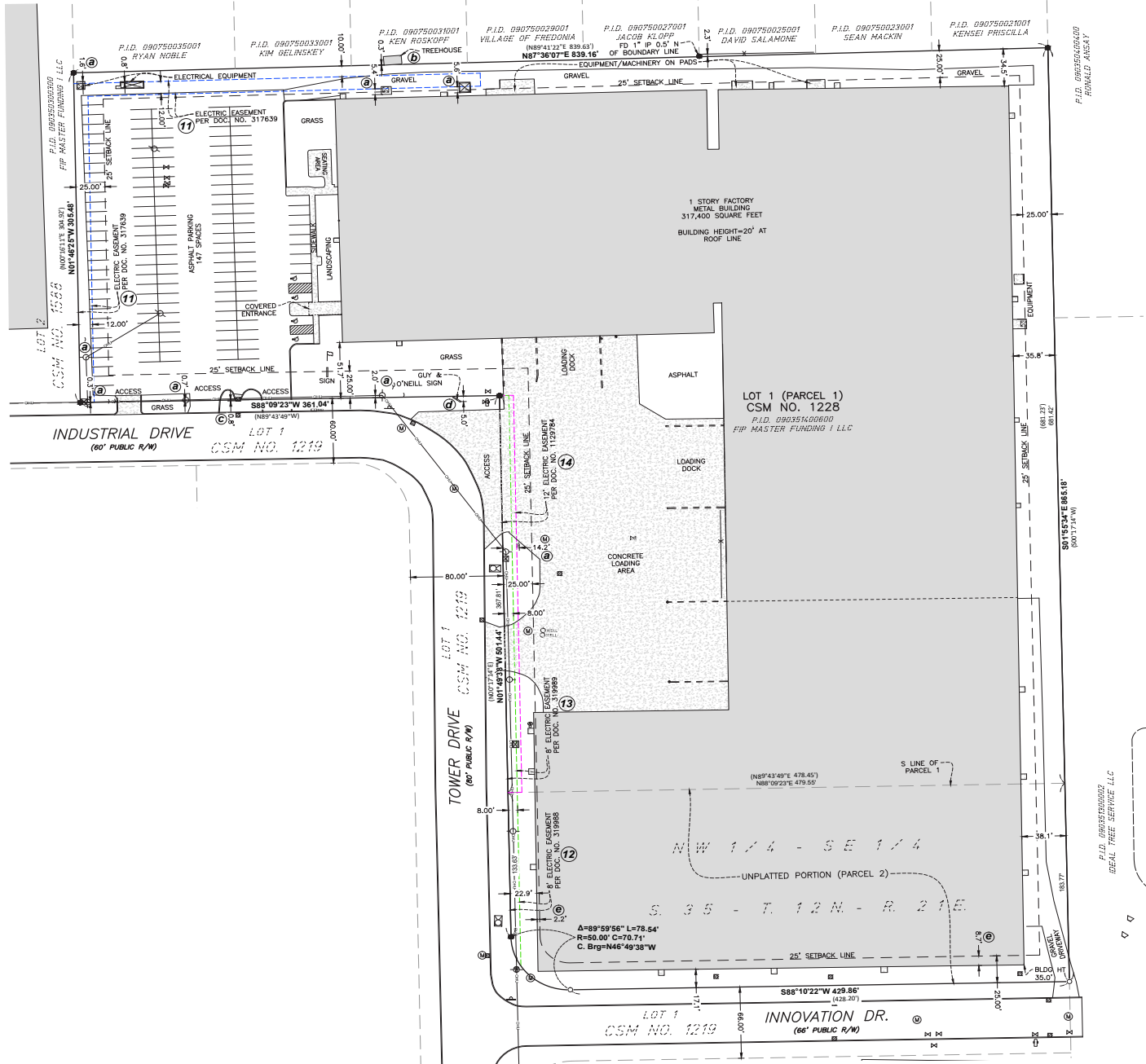
OPTION 3 THREE TENANT	A	±125,800 SF	6 Docks 1 Drive-In
	C + D	±118,750 SF	6 Docks 0 Drive-Ins
	E	±72,000 SF	4 Docks 1 Drive-in

OPTION 4 THREE TENANT	A	±125,800 SF	6 Docks 1 Drive-in
	C	±62,500 SF	6 Docks 0 Drive-ins
	D + E	±128,250 SF	4 Docks 1 Drive-in





ALTA/NSPS LAND TITLE SURVEY



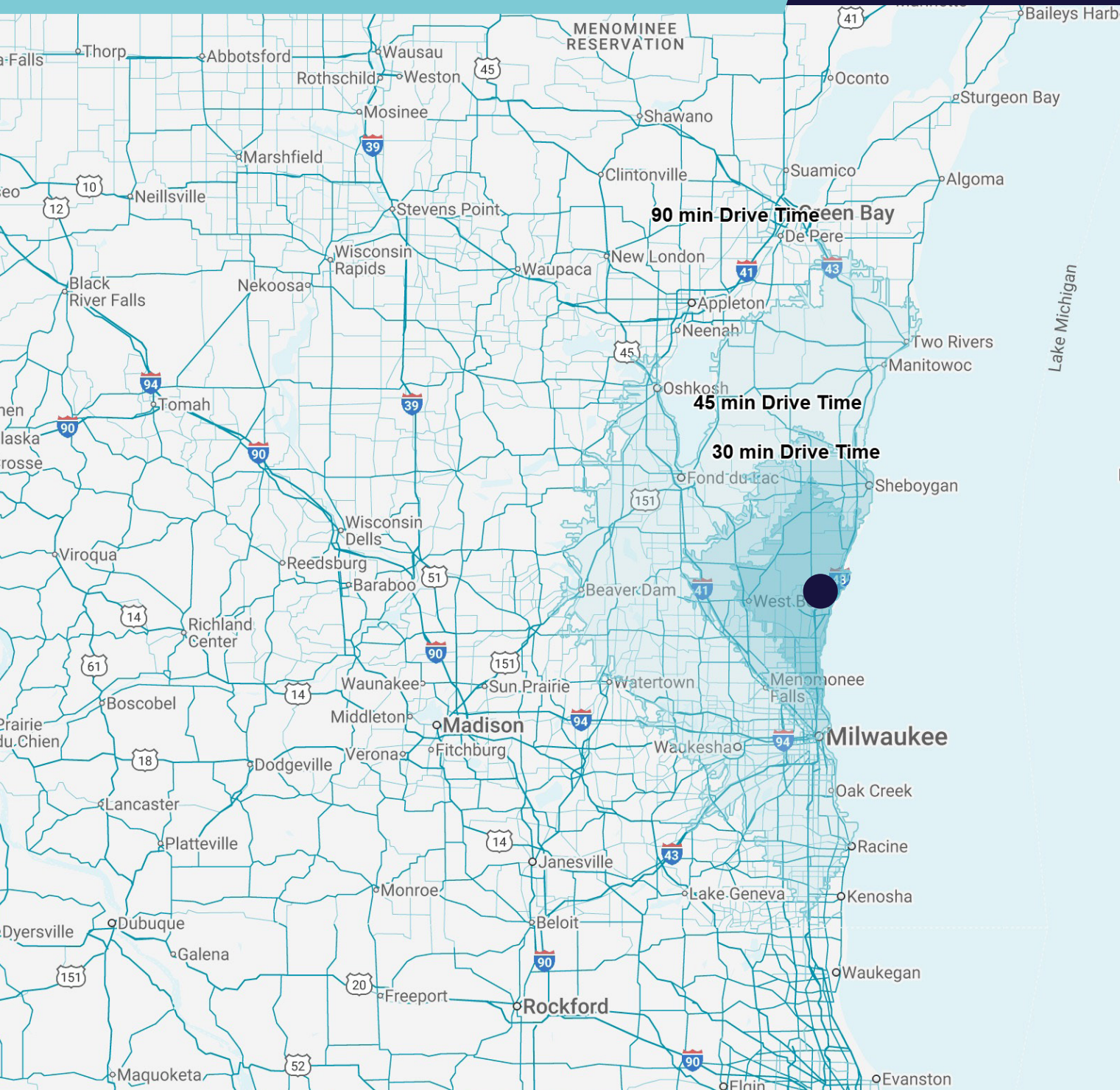
200 INDUSTRIAL DRIVE

Drive Time Map



CUSHMAN &
WAKEFIELD

BOERKE



39 MILES

MITCHELL INTL. AIRPORT

32 MILES

MILWAUKEE

48 MILES

WAUKESHA

122 MILES

CHICAGO

107 MILES

O'HARE INTL. AIRPORT

109 MILES

MADISON

65 MILES

OSHKOSH

84 MILES

APPLETON

88 MILES

GREEN BAY

200 INDUSTRIAL DRIVE

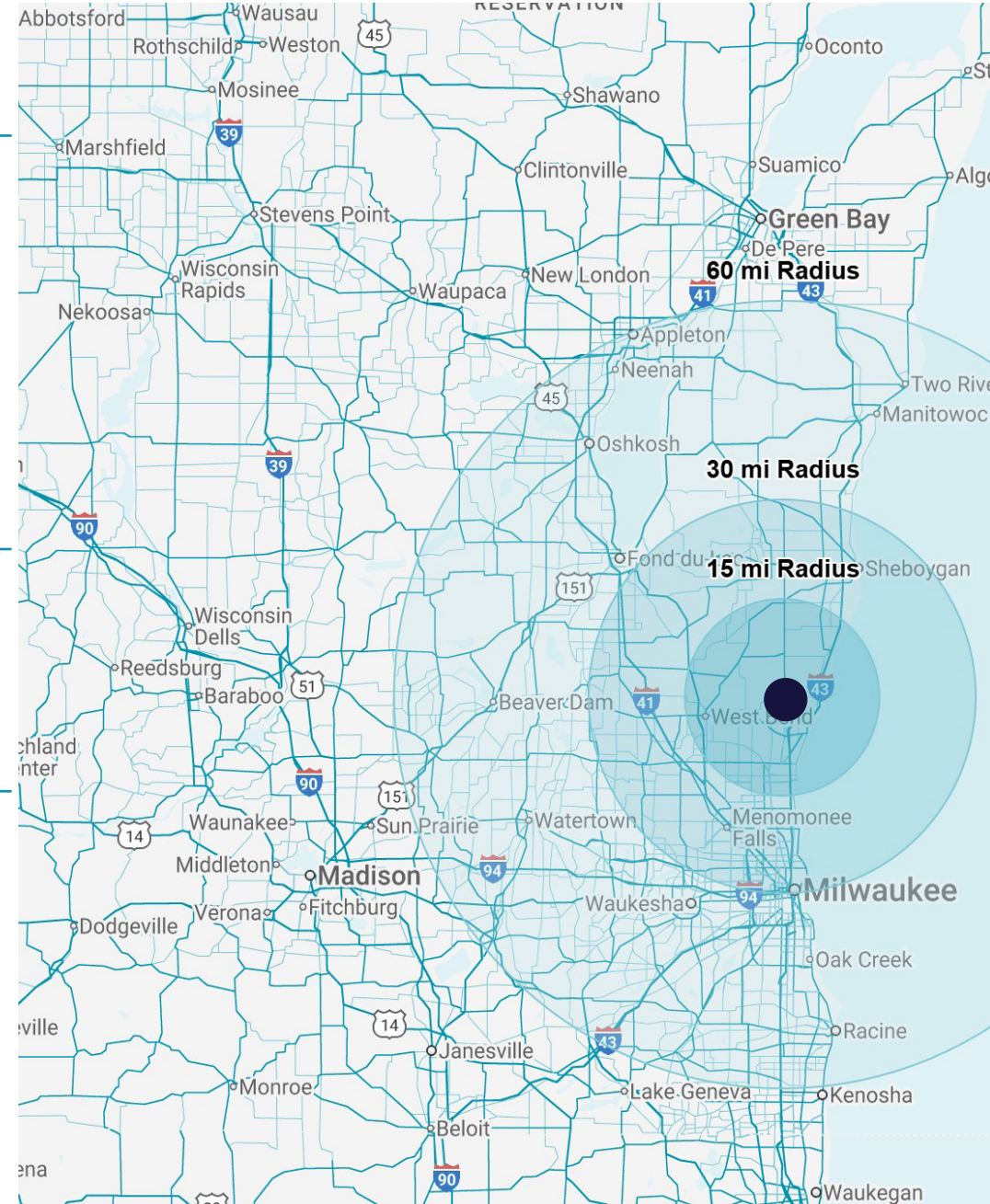
Demographics



CUSHMAN &
WAKEFIELD

BOERKE

POPULATION	15 MILE	30 MILES	60 MILES
Estimated Population (2024)	147,056	981,897	2.92 M
Median Age (2024)	42.9	38.4	39.6
Any College (Some College or Higher)	71,523 11.9%	453,298 67.7%	217,784 12.0%
College Degree + (Bachelor Degree or Higher)	39,313 37.4%	265,169 39.6%	639,893 35.3%
HOUSEHOLDS	15 MILE	30 MILES	60 MILES
Estimated Households (2024)	61,454	415,586	1.1 M
Estimated Average Household Income (2024)	\$116,854	\$109,763	\$107,300
OCCUPATION	15 MILE	30 MILES	60 MILES
White Collar Workers (2024)	49,108 38.6%	312,956 37.1%	805,504 59.9%
Blue Collar Workers (2024)	30,851 38.6%	184,690 37.1%	539,944 40.1%



CONTACT

INDUSTRIAL TEAM

CODY ZIEGLER

Real Estate Advisor
+1 262 844 5027
cziegler@boerke.com

STEVE STYZA

Real Estate Advisor
+1 414 573 1414
sstyza@boerke.com

TERRY McMAHON, SIOR

Principal
+1 414 203 3047
tcmahon@boerke.com



BOERKE

Milwaukee Office

731 N Jackson Street
Suite 700
Milwaukee, WI 53202

boerke.com

Madison Office

33 E Main Street
Suite 241
Madison, WI 53703

STATE OF WISCONSIN

DISCLOSURE TO NON-RESIDENTIAL CUSTOMERS

Prior to negotiating on your behalf the brokerage firm, or an agent associated with the firm, must provide you the following disclosure statement:

DISCLOSURE TO CUSTOMERS

You are a customer of the brokerage firm (hereinafter Firm). The Firm is either an agent of another party in the transaction or a subagent of another firm that is the agent of another party in the transaction. A broker or a salesperson acting on behalf of the Firm may provide brokerage services to you. Whenever the Firm is providing brokerage services to you, the Firm and its brokers and salespersons (hereinafter Agents) owe you, the customer, the following duties:

- (a) The duty to provide brokerage services to you fairly and honestly.
- (b) The duty to exercise reasonable skill and care in providing brokerage services to you.
- (c) The duty to provide you with accurate information about market conditions within a reasonable time if you request it, unless disclosure of the information is prohibited by law.
- (d) The duty to disclose to you in writing certain Material Adverse Facts about a property, unless disclosure of the information is prohibited by law. (See Definition of Material Adverse Facts below).
- (e) The duty to protect your confidentiality. Unless the law requires it, the Firm and its Agents will not disclose your confidential information or the confidential information of other parties.
- (f) The duty to safeguard trust funds and proposals in an objective and unbiased manner and disclose the advantages and disadvantages of the proposals. other property held by the Firm or its Agents.
- (g) The duty, when negotiating, to present contract proposals in an objective and unbiased manner and disclose the advantages and disadvantages of the proposals.
- Please review this information carefully. An Agent of the Firm can answer your questions about brokerage services, but if you need legal advice, tax advice, or a professional home inspection, contact an attorney, tax advisor, or home inspector. This disclosure is required by section 452.135 of the Wisconsin statutes and is for information only. It is a plain-language summary of the duties owed to a customer under section 452.133(1) of the Wisconsin statutes.

CONFIDENTIALITY NOTICE TO CUSTOMERS

The Firm and its Agents will keep confidential any information given to the Firm or its Agents in confidence, or any information obtained by the Firm and its Agents that a reasonable person would want to be kept confidential, unless the information must be disclosed by law or you authorize the Firm to disclose particular information. The Firm and its Agents shall continue to keep the information confidential after the Firm is no longer providing brokerage services to you.

- The following information is required to be disclosed by law:
 1. Material Adverse Facts, as defined in Wis. Stat. § 452.01(5g) (see "Definition of Material Adverse Facts" below).
 2. Any facts known by the Firm or its Agents that contradict any information included in a written inspection report on the property or real estate that is the subject of the transaction.

To ensure that the Firm and its Agents are aware of what specific information you consider confidential, you may list that information below. At a later time, you may also provide the Firm or its Agents with other Information you consider to be confidential.

CONFIDENTIAL INFORMATION:

NON- CONFIDENTIAL INFORMATION *(the following information my be disclosed by the Firm and its Agents):*

(Insert information you authorize to be disclosed, such as financial qualification information.)

DEFINITION OF MATERIAL ADVERSE FACTS

A "Material Adverse Fact" is defined in Wis. Stat. § 452.01(5g) as an Adverse Fact that a party indicates is of such significance, or that is generally recognized by a competent licensee as being of such significance to a reasonable party, that it affects or would affect the party's decision to enter into a contract or agreement concerning a transaction or affects or would affect the party's decision about the terms of such a contract or agreement.

An "Adverse Fact" is defined in Wis. Stat. § 452.01(1e) as a condition or occurrence that a competent licensee generally recognizes will significantly and adversely affect the value of the property, significantly reduce the structural integrity of improvements to real estate, or present a significant health risk to occupants of the property; or information that indicates that a party to a transaction is not able to or does not intend to meet his or her obligations under a contract or agreement made concerning the transaction.

NOTICE ABOUT SEX OFFENDER REGISTRY

You may obtain information about the sex offender registry and persons registered with the registry by contacting the Wisconsin Department of Corrections on the Internet at <http://www.doc.wi.gov> or by telephone at 608-240-5830.