



FOR LEASE

110 Gibraltar Road

Horsham, PA 19044

Property Highlights

- Two-story office building with energy efficient windows and a modern lobby
- Walkable to PJ Whelihan's and CVS
- Walkable to The Patio Beer Garden at 100 Lakeside
- On-site EV charging stations throughout campus
- Synergy at 100 Lakeside Conference Center
- Fully-equipped, newly renovated conference facility at 200 Gibraltar



For information, please contact:

Patrick Nowlan

Senior Managing Director
t 610-755-6965
patrick.nowlan@nmrk.com

Justin Bell

Senior Managing Director
t 610-755-6979
justin.bell@nmrk.com

1000 Continental Drive
Suite 200
King of Prussia, PA 19406
t 610-265-0600

nmrk.com

NEWMARK

Licensed in Pennsylvania as Newmark Real Estate

The information contained herein has been obtained from sources deemed reliable but has not been verified and no guarantee, warranty or representation, either express or implied, is made with respect to such information. Terms of sale or lease and availability are subject to change or withdrawal without notice.



**555 FLATS
LUXURY LIVING
LESS THAN
1 MILE AWAY**



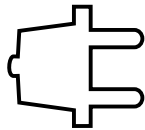
**SHOPPING AT THE
UPPER DUBLIN
PROMENADE
LESS THAN
2 MILES AWAY**



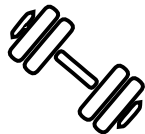
**FIVE DAYCARE
FACILITIES UNDER
5 MINUTES FROM
THE OFFICE**



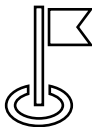
**PARKING:
4.2/1,000**



**1,200 AMPS
480,277 VOLTS**



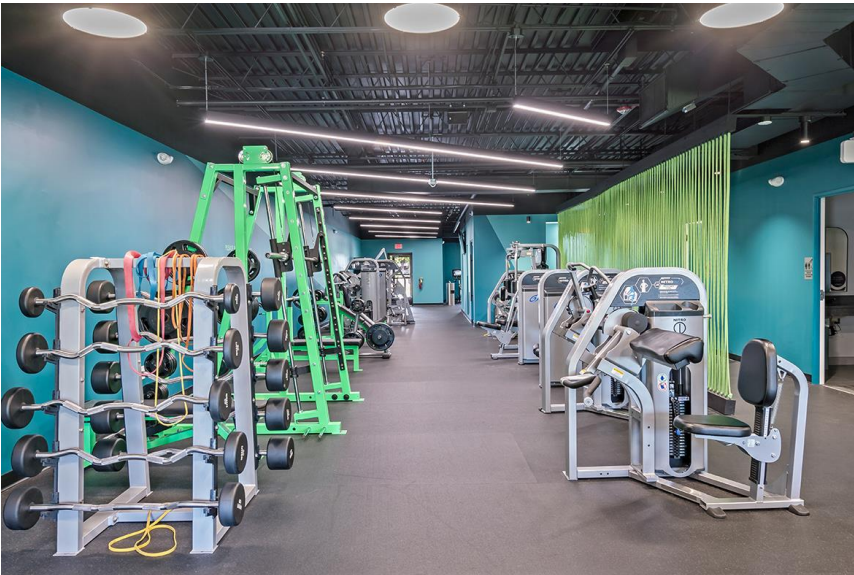
**ACCESS TO FITNESS
CENTER LOCATED AT
100 LAKESIDE DRIVE**



**LOCATED CLOSE TO
TWO PENNSYLVANIA
TURNPIKE ACCESS
POINTS, ROUTES 611,
63 & 309**



**ACCESS TO THE 5-MILE
HORSHAM POWERLINE
TRAIL WITH OUTDOOR
CIRCUITS**

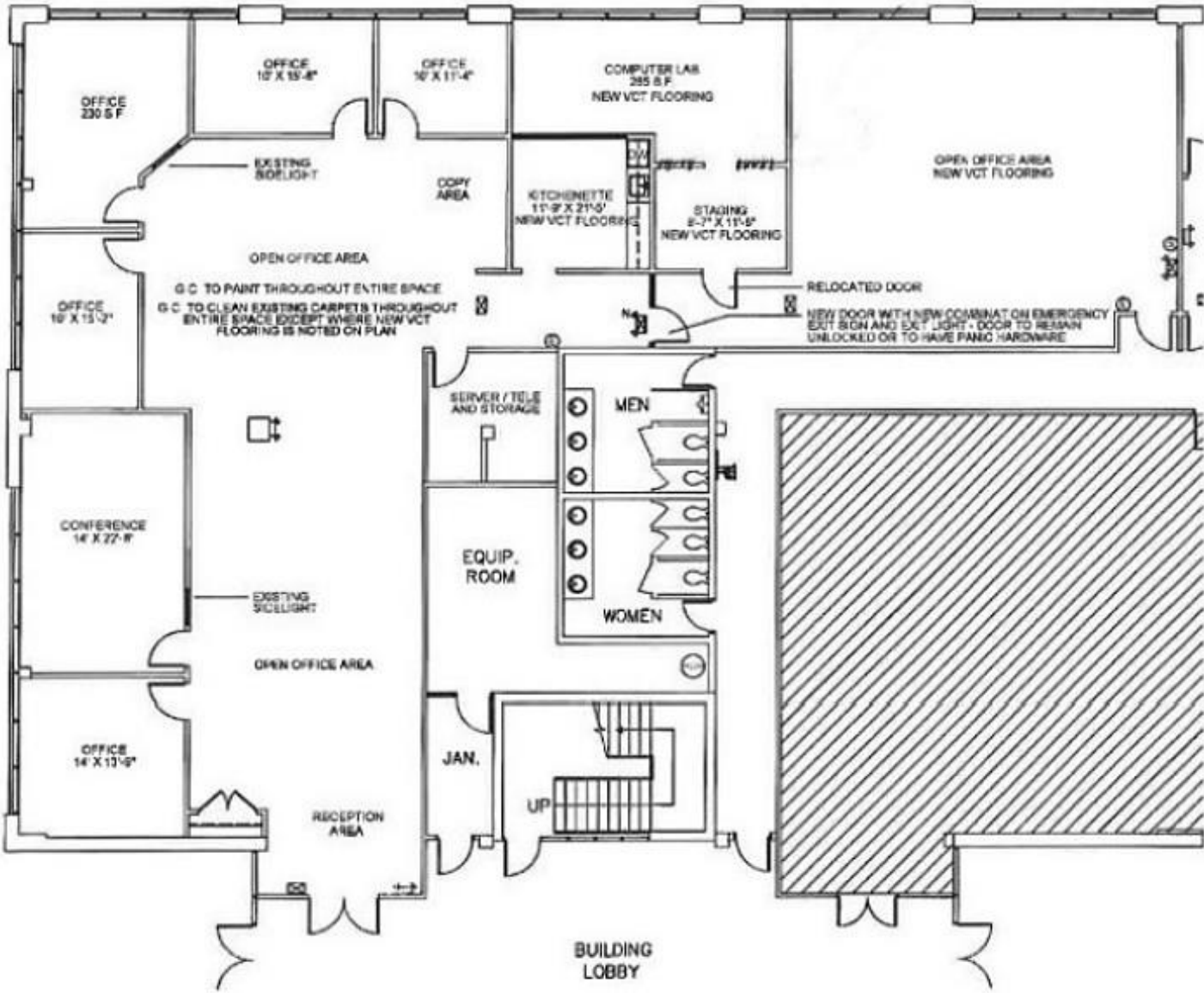




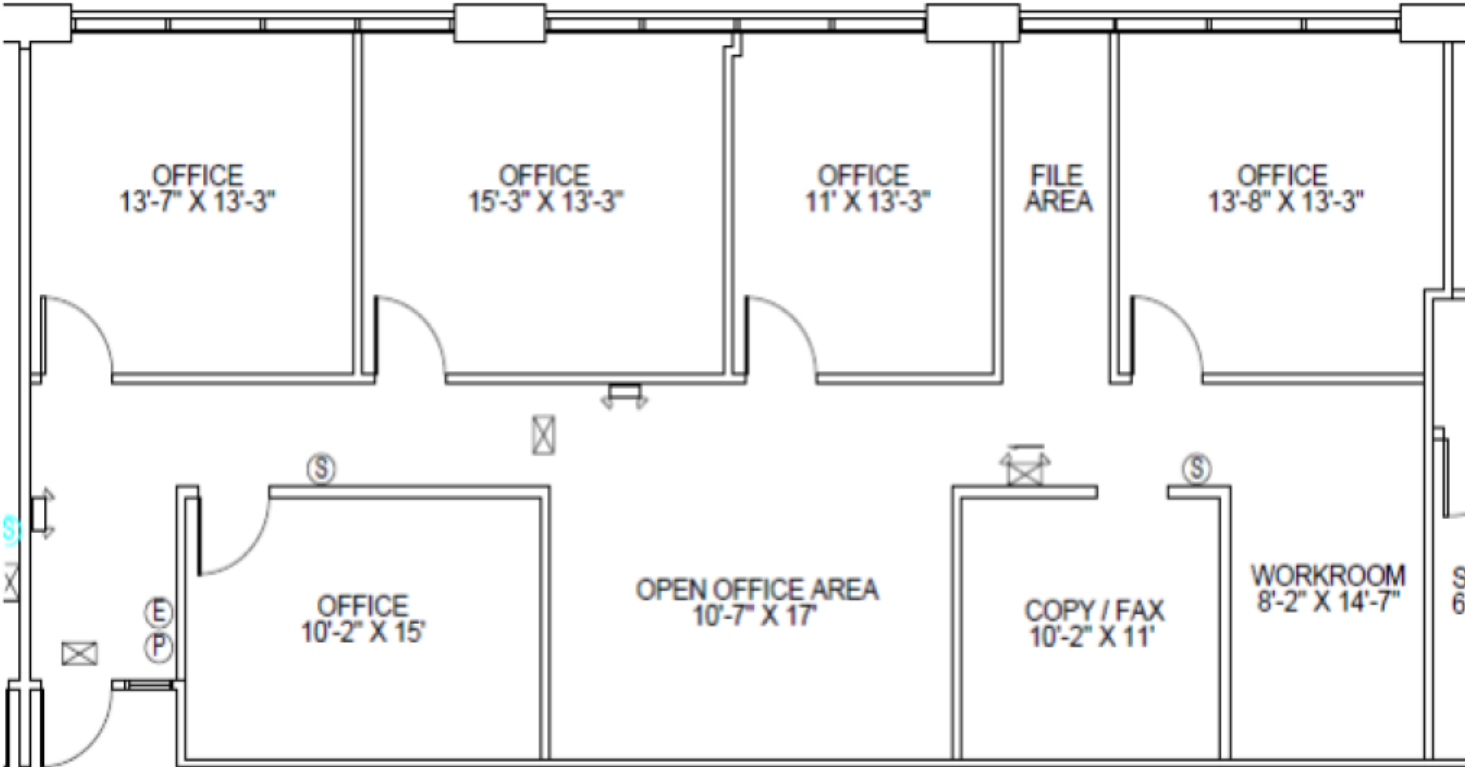
Availabilities

Suite 100	5,237 SF
Suite 103	1,337 SF
Suite 120	1,979 SF
Suite 150	15,087 SF
Suite 222	2,642 SF

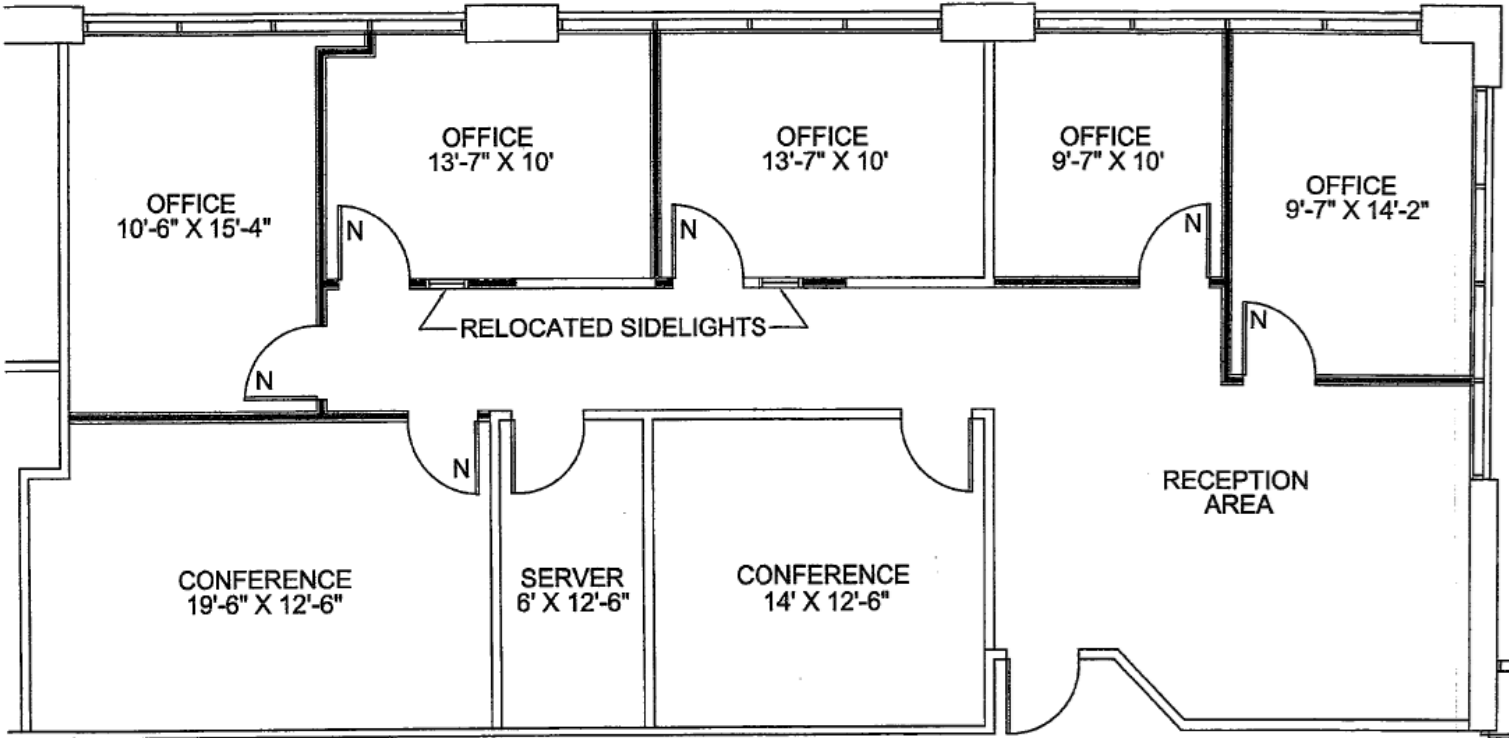
Suite 100 – 5,237 SF



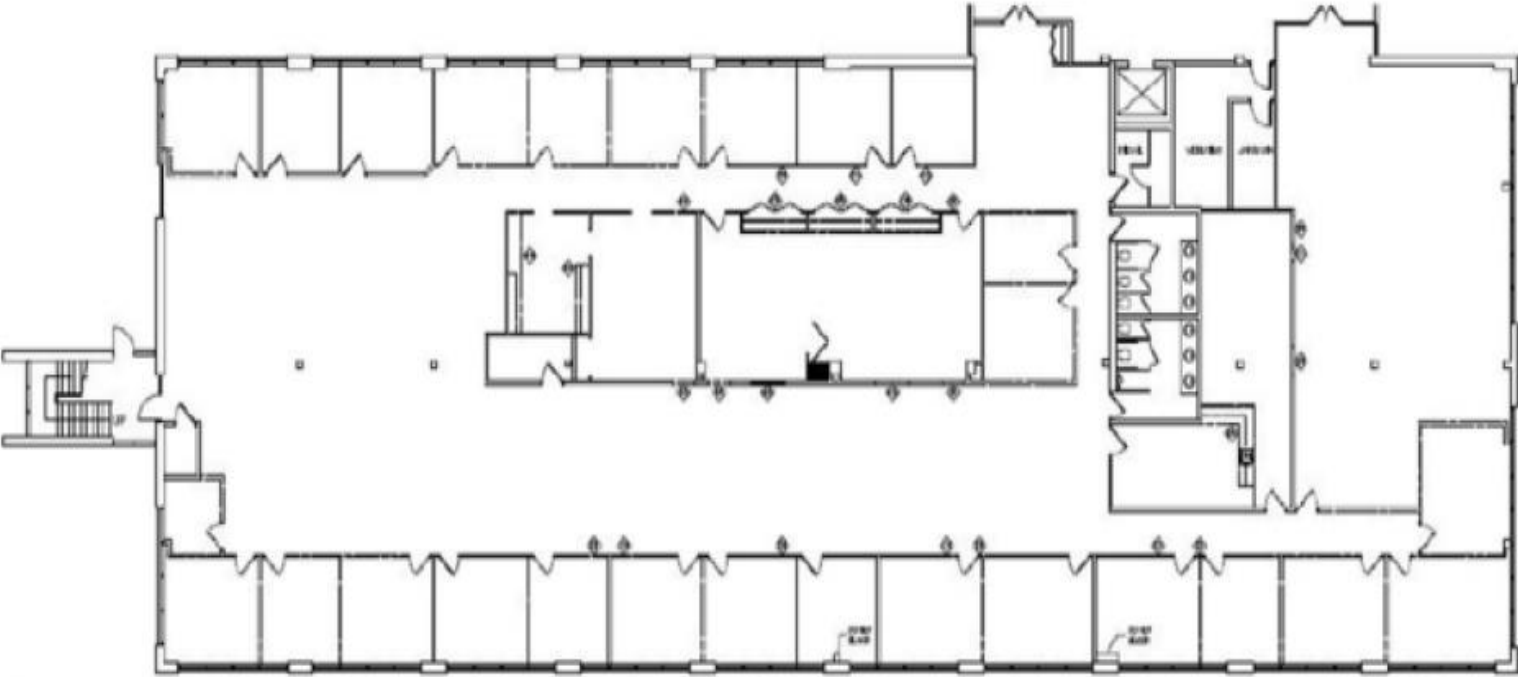
Suite 103 – 1,337 SF



Suite 120 – 1,979 SF



Suite 150 – 15,087 SF



Suite 222 – 2,642 SF

