

3901 HIGHLAND ROAD
WATERFORD, MICHIGAN

OFFICE/MEDICAL FOR LEASE
1,600-2,654 Square Feet Available



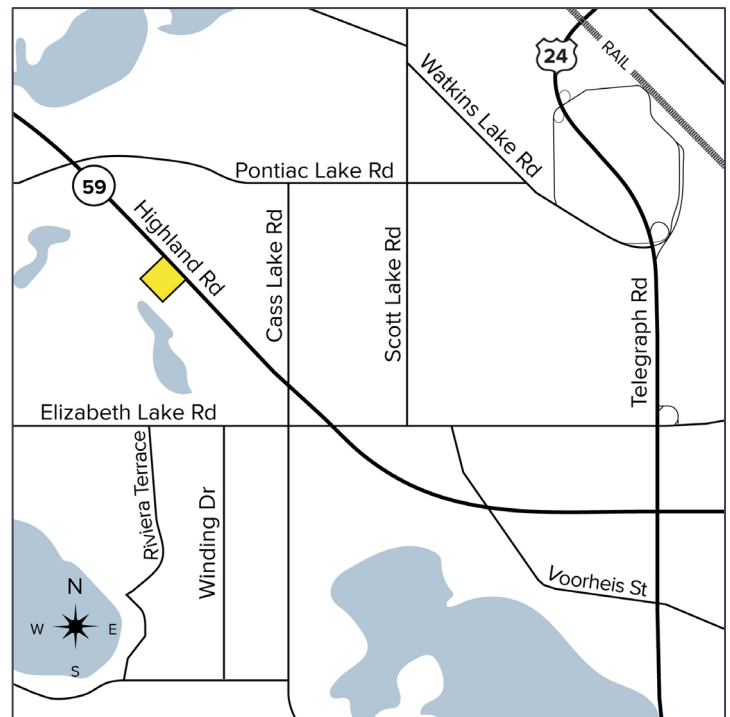
**SIGNATURE
ASSOCIATES**
KNOW SIGNATURE | KNOW RESULTS

MAJOR RENOVATIONS UNDERWAY



PROPERTY FEATURES

- 1,600 - 2,654 square feet available
 - Suite A: 1,600 square feet
 - Suite G1: 2,654 square feet of move in ready medical space
- New ownership
- Building undergoing major renovations
- Professional office and medical space with prime visibility and signage
- Ideal for urgent care or medical provider
- Lease Rate: \$15.00/sq. ft. NN



For more information, please contact:

JEFFREY TREPECK
(248) 359 0626
jtrepeck@signatureassociates.com

CHRIS MONSOUR
(248) 948 0107
cmonsour@signatureassociates.com

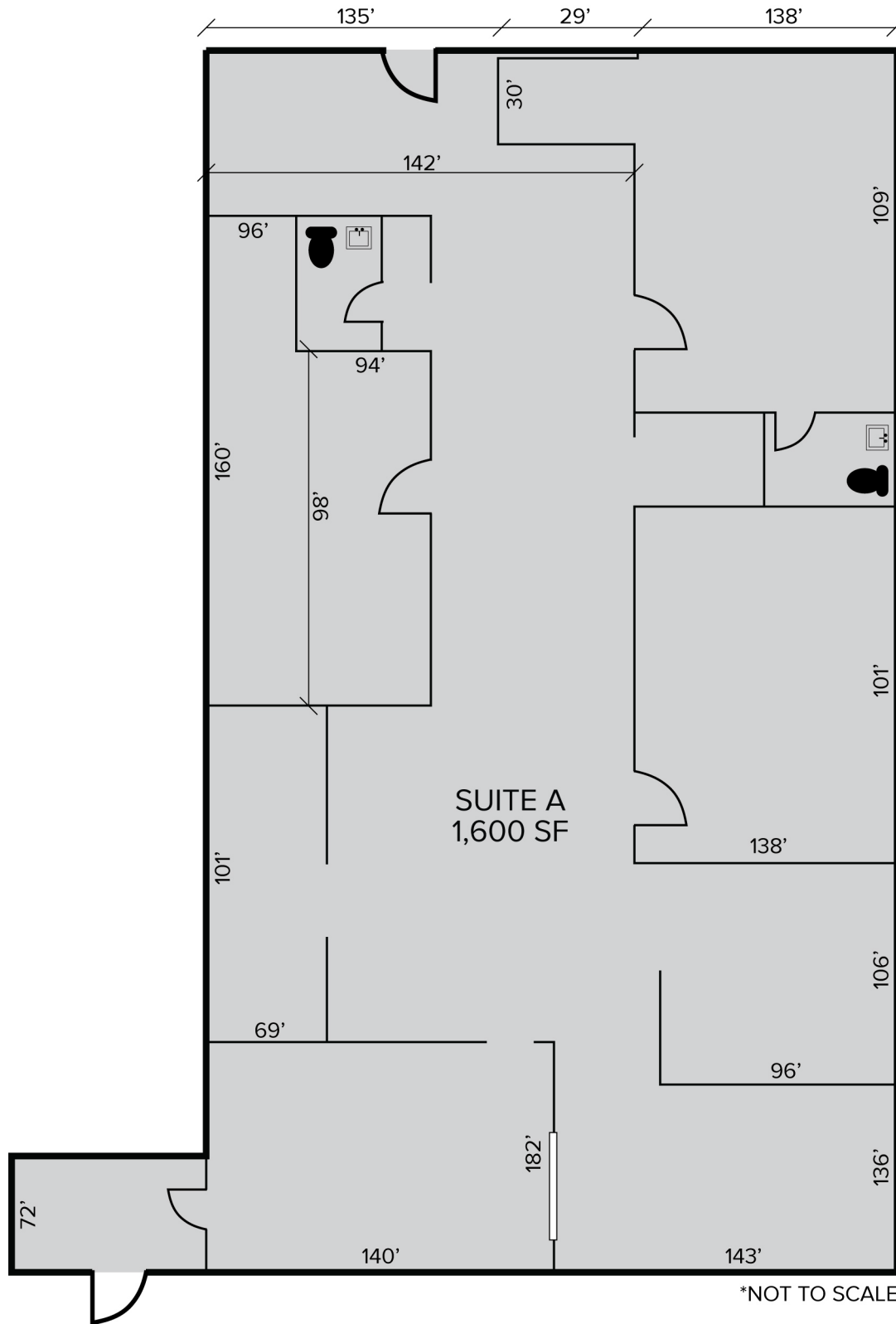
SIGNATURE ASSOCIATES
One Towne Square, Suite 1200
Southfield, MI 48076
www.signatureassociates.com

3901 Highland Road – Waterford, Michigan

Office/Medical For Lease

1,600-2,654
Square Feet
AVAILABLE

Floor Plan



For more information, please contact:

JEFFREY TREPECK

(248) 359 0626

jtrepeck@signatureassociates.com

CHRIS MONSOUR

(248) 948 0107

cmonsour@signatureassociates.com

SIGNATURE ASSOCIATES

One Towne Square, Suite 1200

Southfield, MI 48076

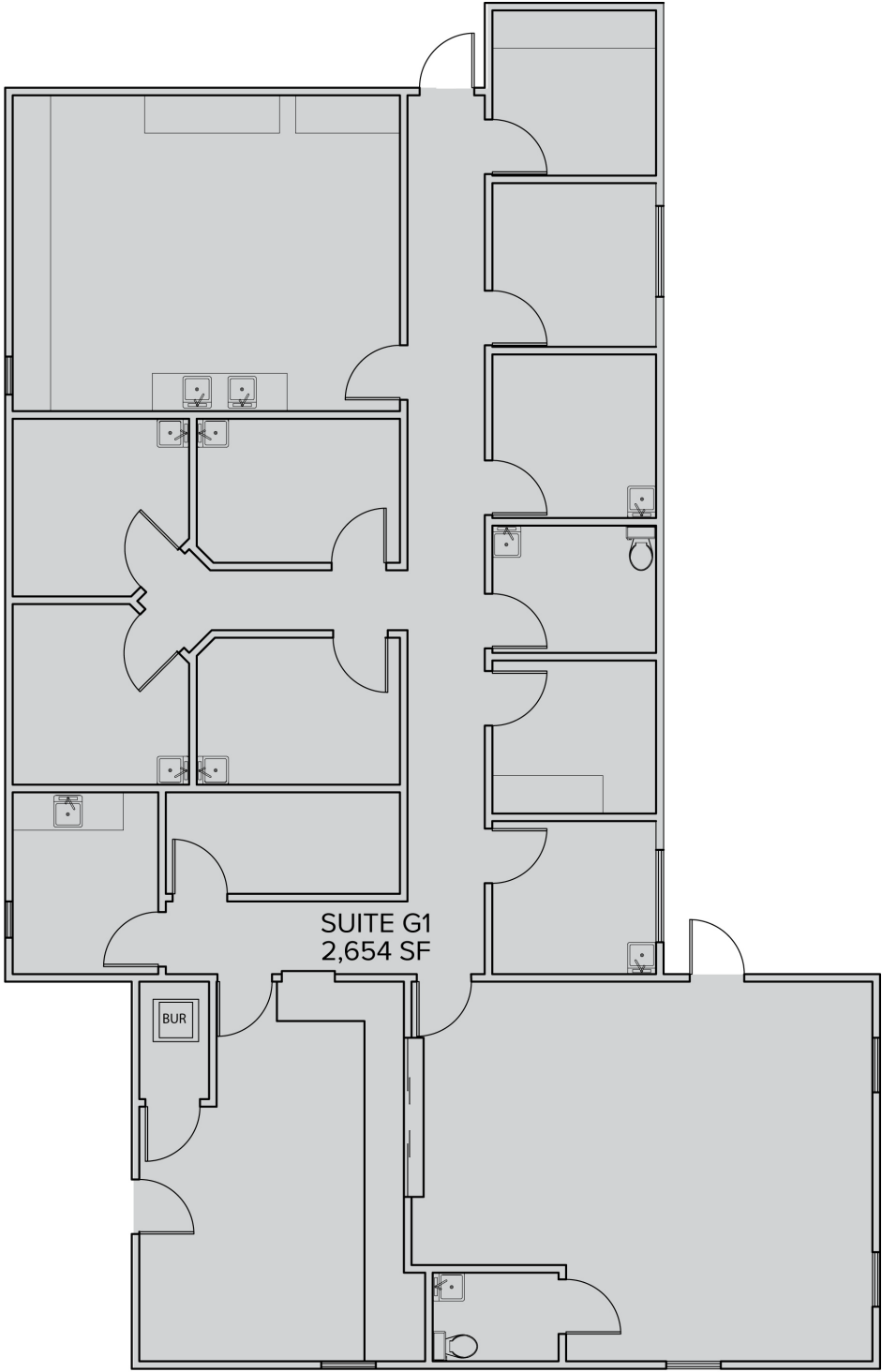
www.signatureassociates.com

3901 Highland Road – Waterford, Michigan

Office/Medical For Lease

1,600-2,654
Square Feet
AVAILABLE

Floor Plan



For more information, please contact:

JEFFREY TREPECK
(248) 359 0626
jtrepeck@signatureassociates.com

CHRIS MONSOUR
(248) 948 0107
cmonsour@signatureassociates.com

SIGNATURE ASSOCIATES
One Towne Square, Suite 1200
Southfield, MI 48076
www.signatureassociates.com

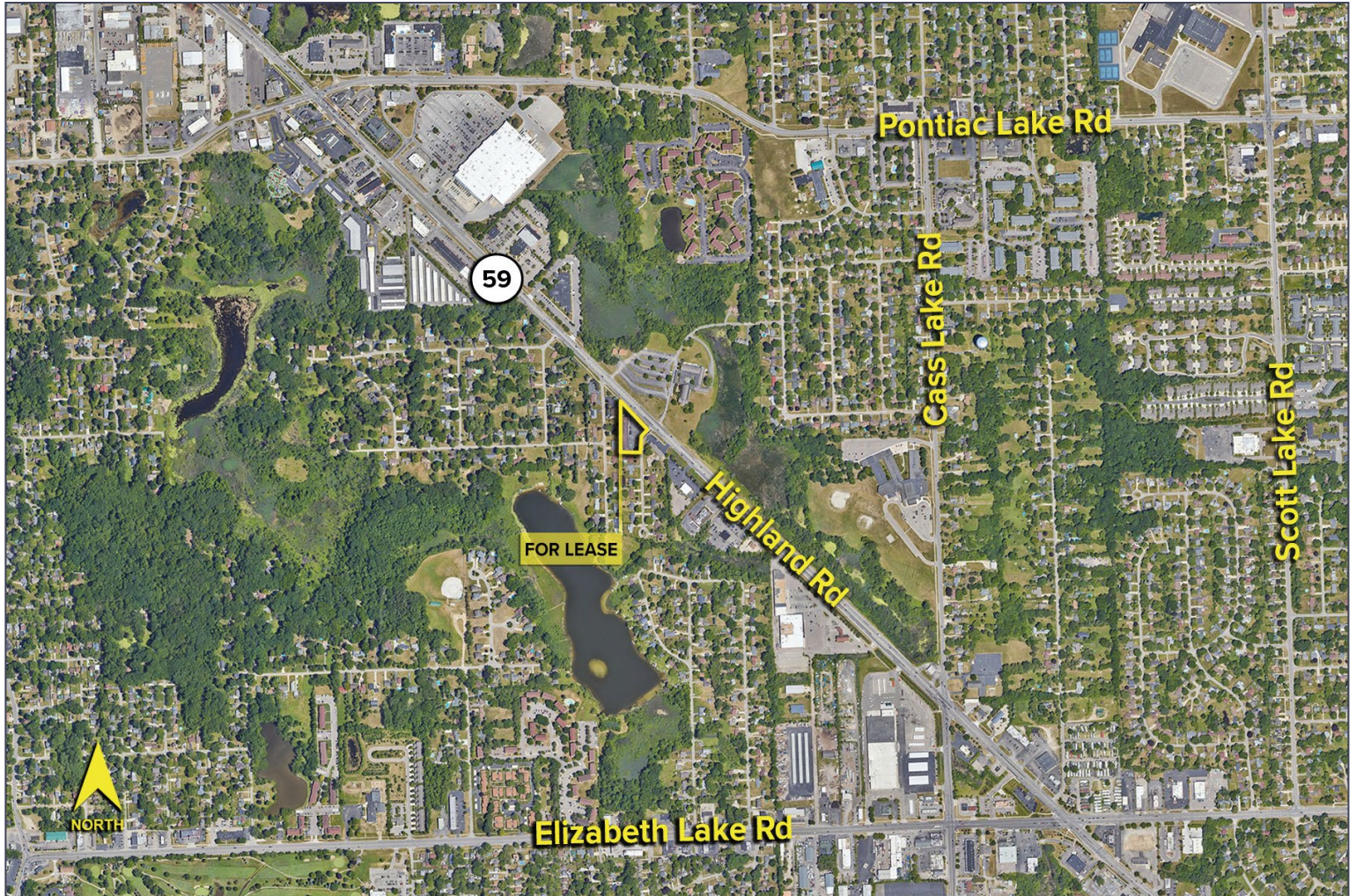
Information is subject to verification and no liability for errors or omissions is assumed. Price is subject to change and listing withdrawal.

3901 Highland Road – Waterford, Michigan

Office/Medical For Lease

1,600-2,654
Square Feet
AVAILABLE

Aerial



For more information, please contact:

JEFFREY TREPECK

(248) 359 0626

jtrepeck@signatureassociates.com

CHRIS MONSOUR

(248) 948 0107

cmonsour@signatureassociates.com

SIGNATURE ASSOCIATES

One Towne Square, Suite 1200

Southfield, MI 48076

www.signatureassociates.com