

Two Top Floors Now
Available For Lease!

WOODS MILL 
Pointe

425 S Woods Mill Road | Town and Country, MO 63017

 [View Availabilities](#)

425

Carrie Herrmann
Senior Vice President
+1 314 584 6273
carrie.herrmann@colliers.com

W. Rockwell (Rocky) Stenger
Senior Vice President
+1 314 584 6208
william.stenger@colliers.com

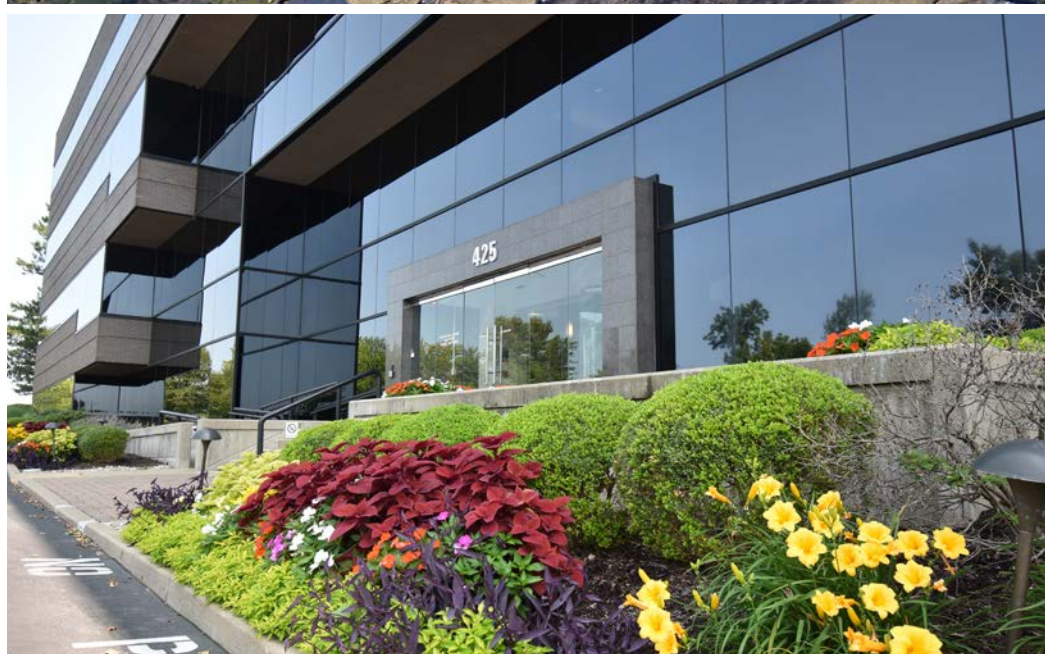
Colliers

Property Features

- Availabilities ranging from 3,086 SF to 21,519 SF
- 49,166 SF of new space available 1/1/2027
- Two top floors available for lease
- Located in the prominent Town and Country
- Easy access on and off Highway 40
- High visibility via Highway 40
- Building & monument signage available
- Lunch room with vending options
- Outdoor patio seating
- Executive covered parking available
- 4.30/1,000 SF parking ratio
- Within miles of numerous amenities including restaurants, grocery stores and hotels

Lease Rate:
\$25.50/SF, Full Service

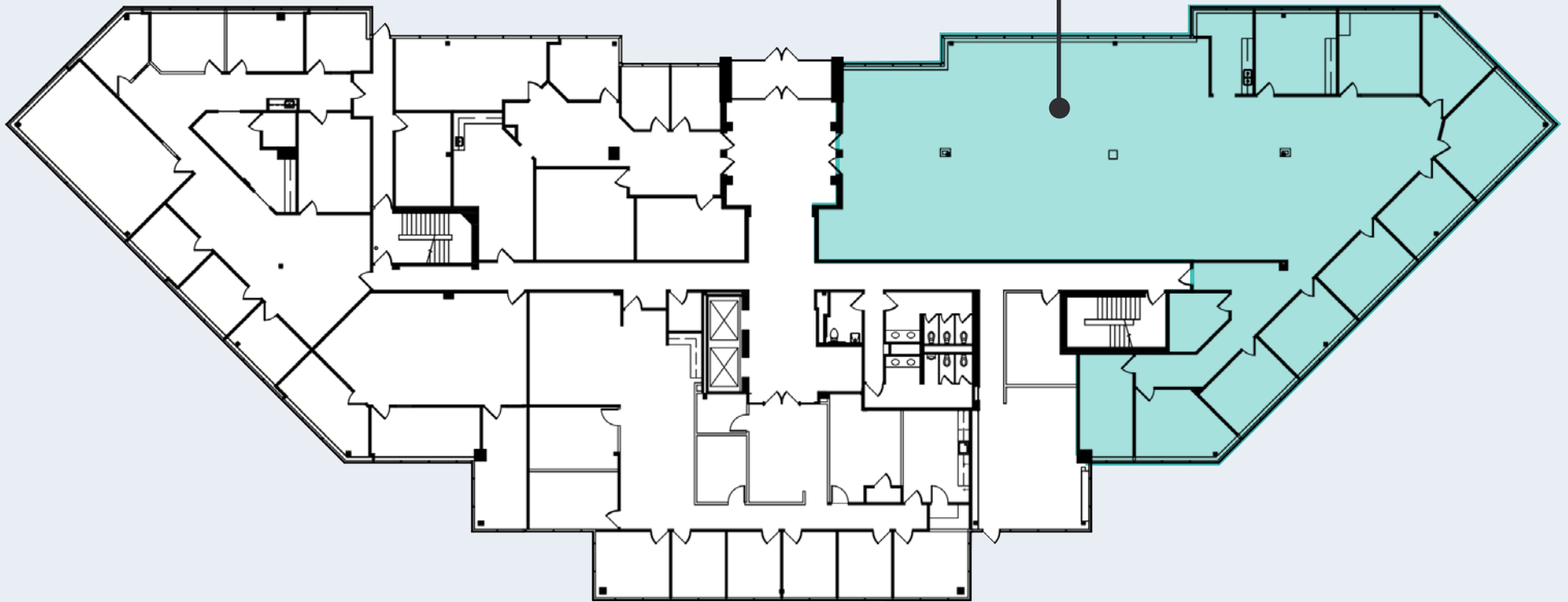






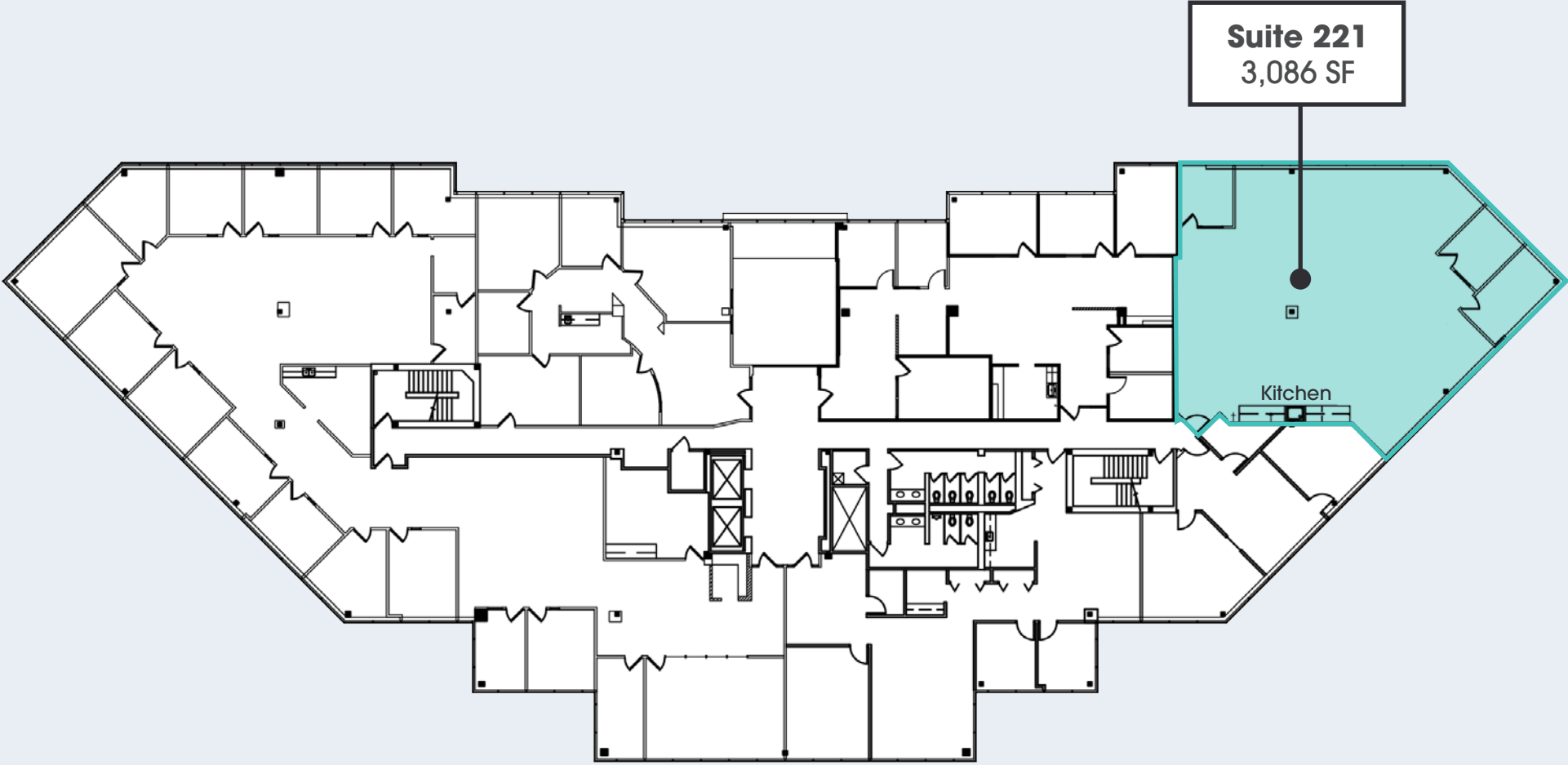
First Floor Availabilities

Suite 100
6,975 SF
Available 1/1/2027





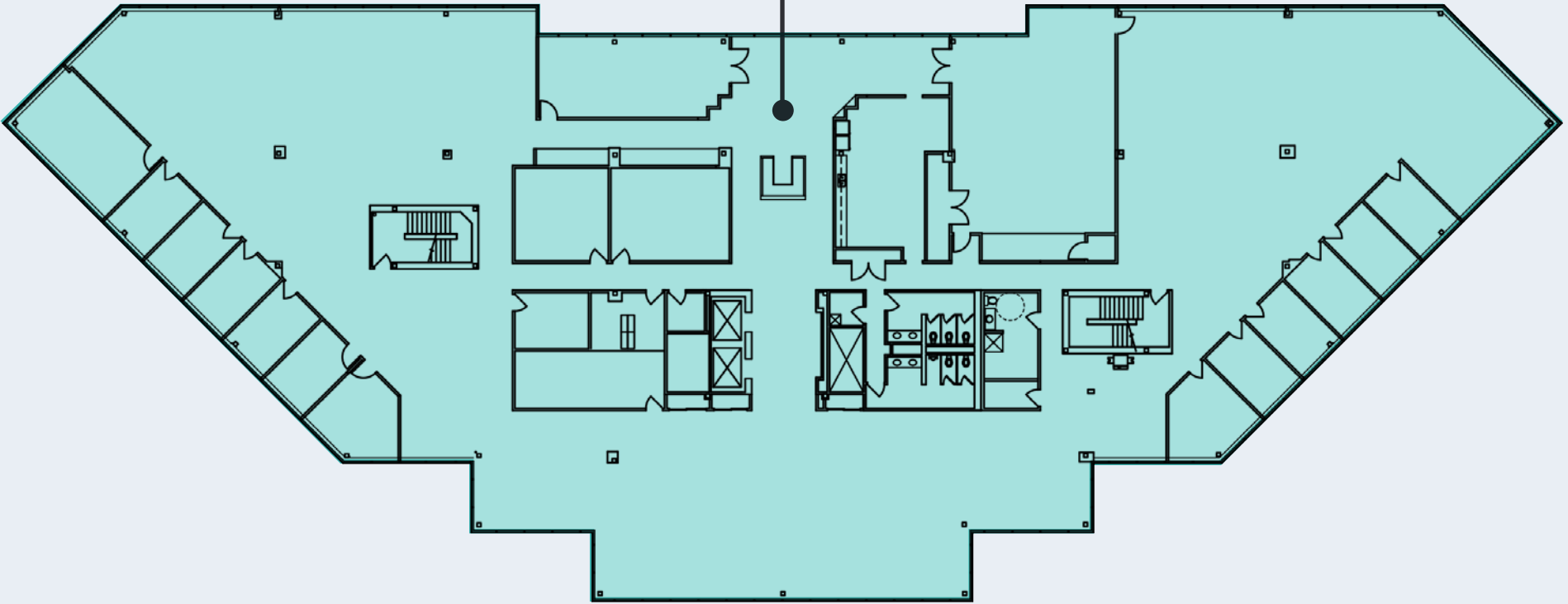
Second Floor Availabilities





Third Floor Availabilities

Suite 300
21,519 SF
Available 1/1/2027





Fourth Floor Availabilities

Suite 400
20,672 SF
Available 1/1/2027



Local Amenities



Schnucks
Harpos
mellow MUSHROOM
FIRST WATCH
THE DAYTIME CAFE

Dierbergs
STARBUCKS
Bowlero
Domino's
SEoul TACO
Saint Louis BREAD CO.
shimmi
Pizza Hut

ALDI
BRISTOL SEAFOOD GRILL
GIOIA'S DELI
FIVE GUYS
BURGERS and FRIES
SAUCE
CRUPORE
FEI WEI
ASIAN KITCHEN
Saint Louis BREAD CO.
FIRST WATCH
THE DAYTIME CAFE
Pickerman's

Chesterfield Mall

WOODS MILL
Pointe

M
MARYVILLE UNIVERSITY

Missouri Baptist UNIVERSITY

Mercy+

Dierbergs
TRADER JOE'S
Total Wine & MORE
BARNES & NOBLE
SmashBURGER
noodles & COMPANY
Saint Louis BREAD CO.
Crushed Red
Artfully Chopped Craft Salads
CRAZY BOWLS
CHAMPIONS of the good
CRUPORE

M
MARRIOTT

THE DELMAR GARDENS Family

Missouri Baptist MEDICAL CENTER
UIC HealthCare

Meadowbrook COUNTRY CLUB

TARGET
WHOLE FOODS MARKET
Schnucks
HomeGoods
FIRST WATCH
THE DAYTIME CAFE
Melting Pot
PASTA GEMMA
ACE Hardware
CRUPORE
Saint Louis BREAD CO.

WOODS MILL



Pointe

425 S Woods Mill Road | Town and Country, MO 63017

 [View Availabilities](#)

For further information, please contact:

Carrie Herrmann
Senior Vice President
+1 314 584 6273
carrie.herrmann@colliers.com

W. Rockwell (Rocky) Stenger
Senior Vice President
+1 314 584 6208
william.stenger@colliers.com

101 South Hanley Road
Suite 1400
St. Louis, MO 63105
+1 314 863 4447
colliers.com/stlouis

