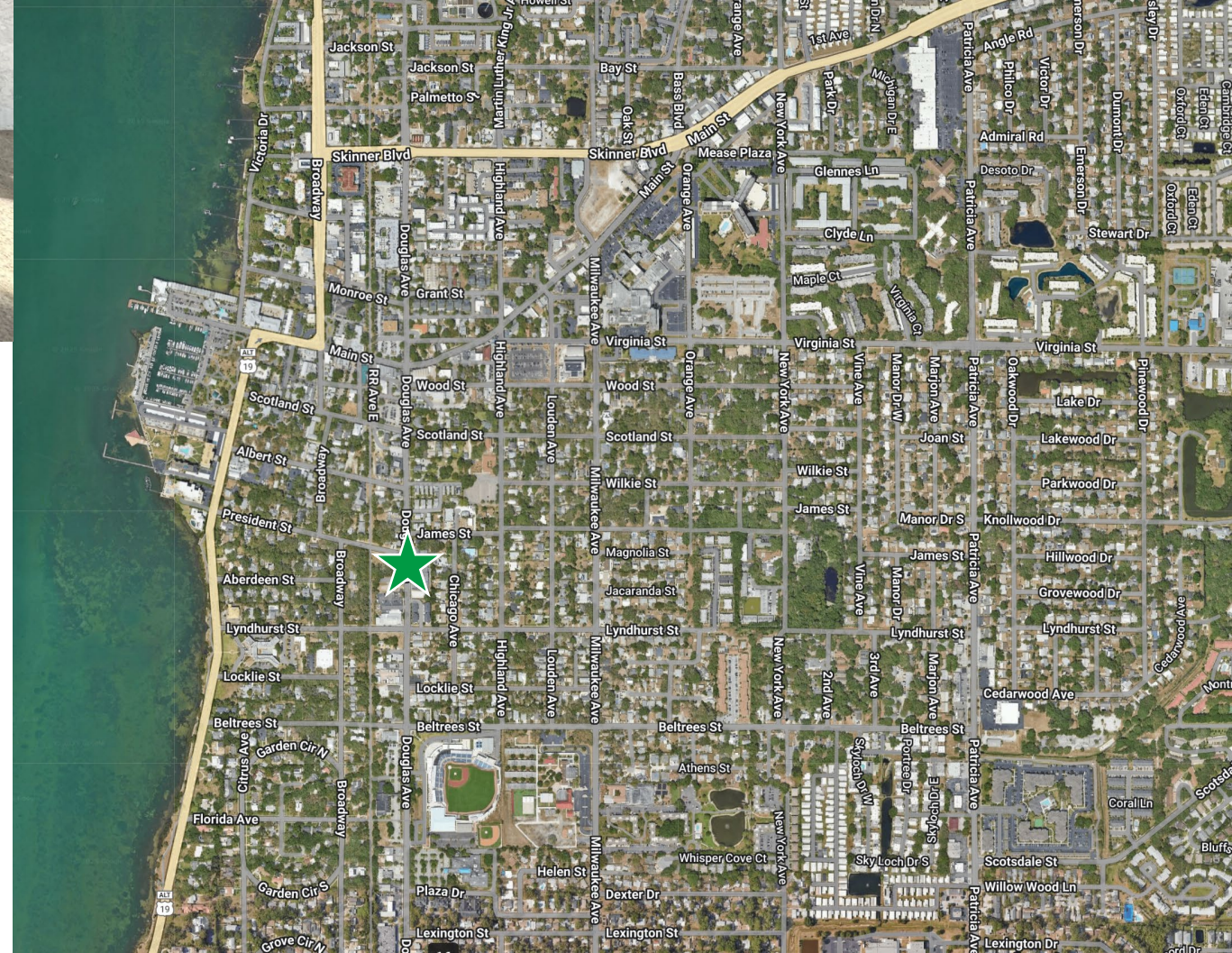




OFFICE SPACE FOR SUBLEASE

537 DOUGLAS AVE., STE 18,
DUNEDIN, FL 34698



Property Highlights

- Updated Office Space for Sublease through 9.30.2029
- 1,000 SF Available – 4 Offices & Conference Room
- Efficient Layout with Break Area
- Close to Downtown Dunedin
- Office Furniture Available for Purchase
- Good Parking

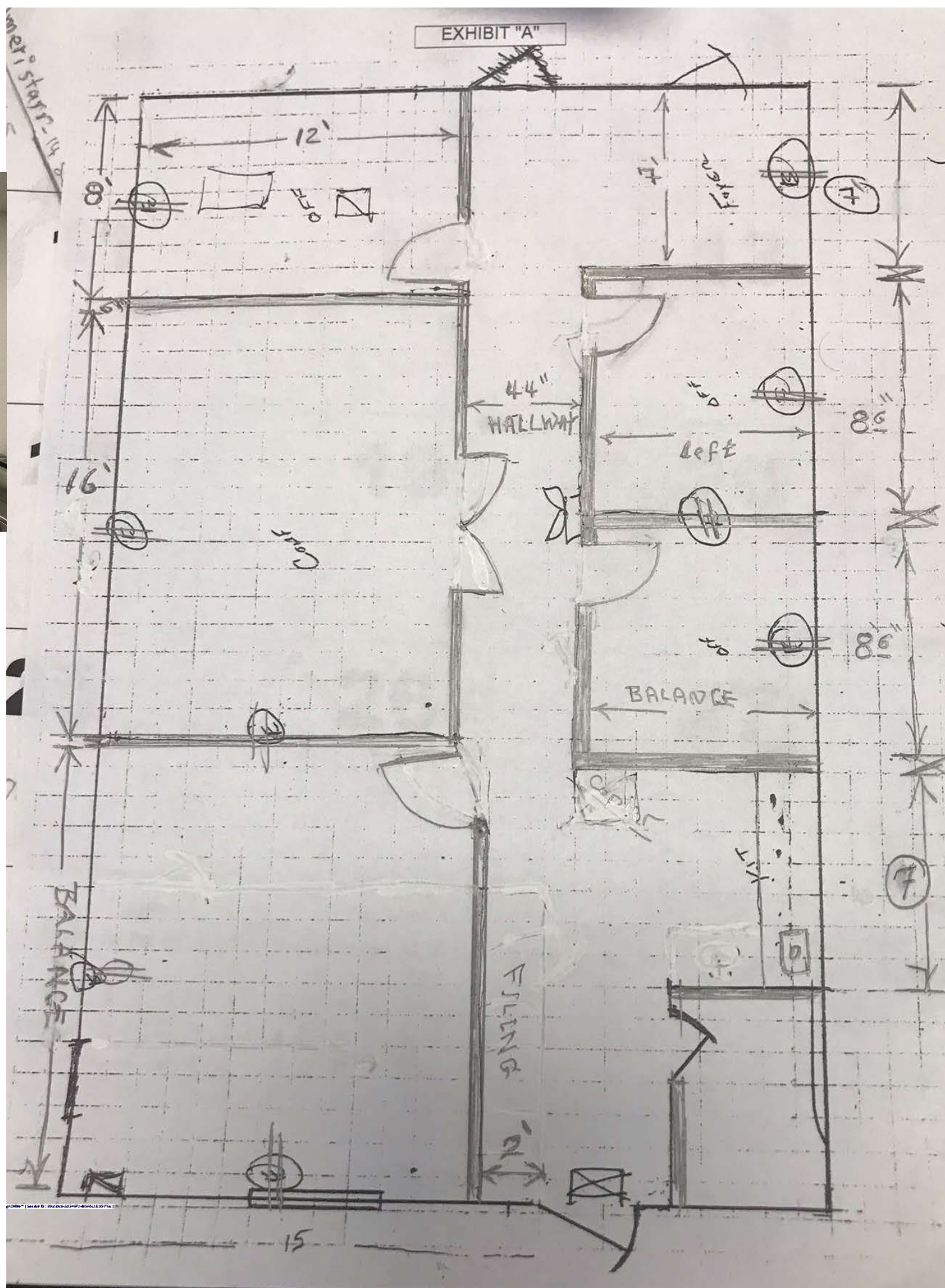
Will Kochenour III
VP/ Lic. Real Estate Broker
Santek Management, LLC
C:727.314.5689
wkochenour@santekmanagement.com





OFFICE SPACE FOR SUBLEASE

537 DOUGLAS AVE., STE 18,
DUNEDIN, FL 34698



DEMOGRAPHICS	1-MILE	3-MILE	5-MILE
POPULATION	12,495	77,050	187,127
AVERAGE HH INCOME	\$69,043	\$81,460	\$82,395
MEDIAN AGE	55.8	51.9	50

Will Kochenour III
 VP/ Lic. Real Estate Broker
 Santek Management, LLC
 C:727.314.5689
wkochenour@santekmanagement.com



The information contained herein was collected from sources deemed to be reliable, however Santek Management, LLC, its agents and clients, cannot be responsible for changes, errors, omissions, withdrawal, & or prior sale.