



STORAGE WAREHOUSE ON 5± ACRES

FOR SUBLEASE 2845 SW HAVERHILL RD., EL DORADO, KS 67042

LEASE RATE	Contact Broker
BUILDING SIZE	9,000 SF
AVAILABLE SF	9,000 SF
POWER	200 Amps/1-Phase
CLEAR HEIGHT	28'
YEAR BUILT	2016
ZONING	Urban Jurisdiction

PROPERTY HIGHLIGHTS

- For sublease with current term ending 9/30/28. Landlord open to long-term lease past current tenant's lease expiration.
- Drive-thru 14' x 14' overhead doors with automatic openers.
- 8" thick floors.
- Building is 12.5' at the eaves, 28' at peak.
- Situated across the street from HF Sinclair El Dorado refinery.
- Minutes from downtown El Dorado and US 254.

HIGHWAY ACCESS



2.4 miles



3.3 miles



3.9 miles



3.8 miles

STORAGE WARE HOUSE ON 5± ACRES

FOR SUBLEASE 2845 SW HAVERHILL RD., EL DORADO, KS 67042

WEIGAND
COMMERCIAL

ADDITIONAL PHOTOS



All information furnished regarding property for sale, lease, exchange or financing is from sources deemed reliable but no guarantee is made or responsibility assumed as to its accuracy or completeness and you are advised to make your own analysis and verification.

Agent hereby notifies prospective buyer/lessee that (a) Agent will be acting as a designated agent of seller/lessor with the duty to represent seller/lessor's interest; and (b) Information given to Agent will be disclosed to seller/lessor.



Ben Gartner, SIOR, CCIM | 316-292-3967 | bgartner@weigand.com

Weigand Real Estate - Commercial

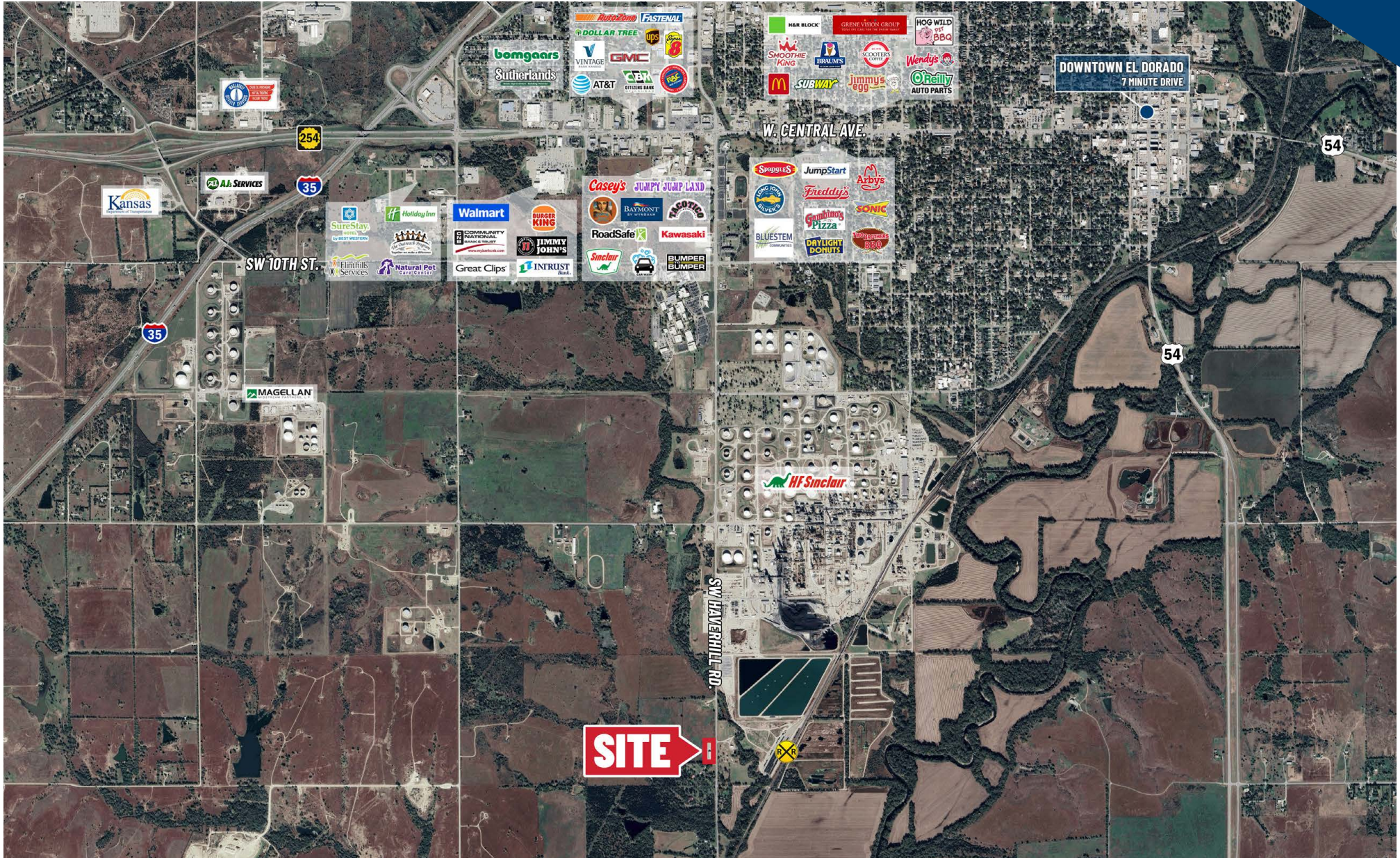
Office: 316-262-6400

Weigand.com

STORAGE WARE HOUSE ON 5± ACRES FOR SUBLEASE 2845 SW HAVERHILL RD., EL DORADO, KS 67042

WEIGAND
COMMERCIAL

AERIAL VIEW



Ben Gartner, SIOR, CCIM | 316-292-3967 | bgartner@weigand.com

Weigand Real Estate - Commercial
Office: 316-262-6400
Weigand.com