

For Sublease

1901 Poplar Street, Oakland, CA

Property highlights:

- Suite B - 8,527 RSF available immediately
- Available through January 31, 2029
- Plug & play
- R&D/lab space with clean room, labs, benches
- Up to 19 benches available
- Biology, cell culture room
- Clean room
- 5 private offices
- Large conference room
- 1 dock door
- Power: 600 amps 277/480v
- Fully sprinklered
- Brand new HVAC system
- R&D/advanced manufacturing campus
- Close proximity to I-880, I-980 & I-580



Kristi Childers
Managing Director
kristi.childers@jll.com
+1 510 812 2878
License #01997043

Charlie Sweeney
Vice President
charlie.sweeney@jll.com
+1 510 593 8035
License #01987199

Eddie Shuai
Senior Managing Director
eddie.shuai@jll.com
+1 415 336 3573
License #01454419

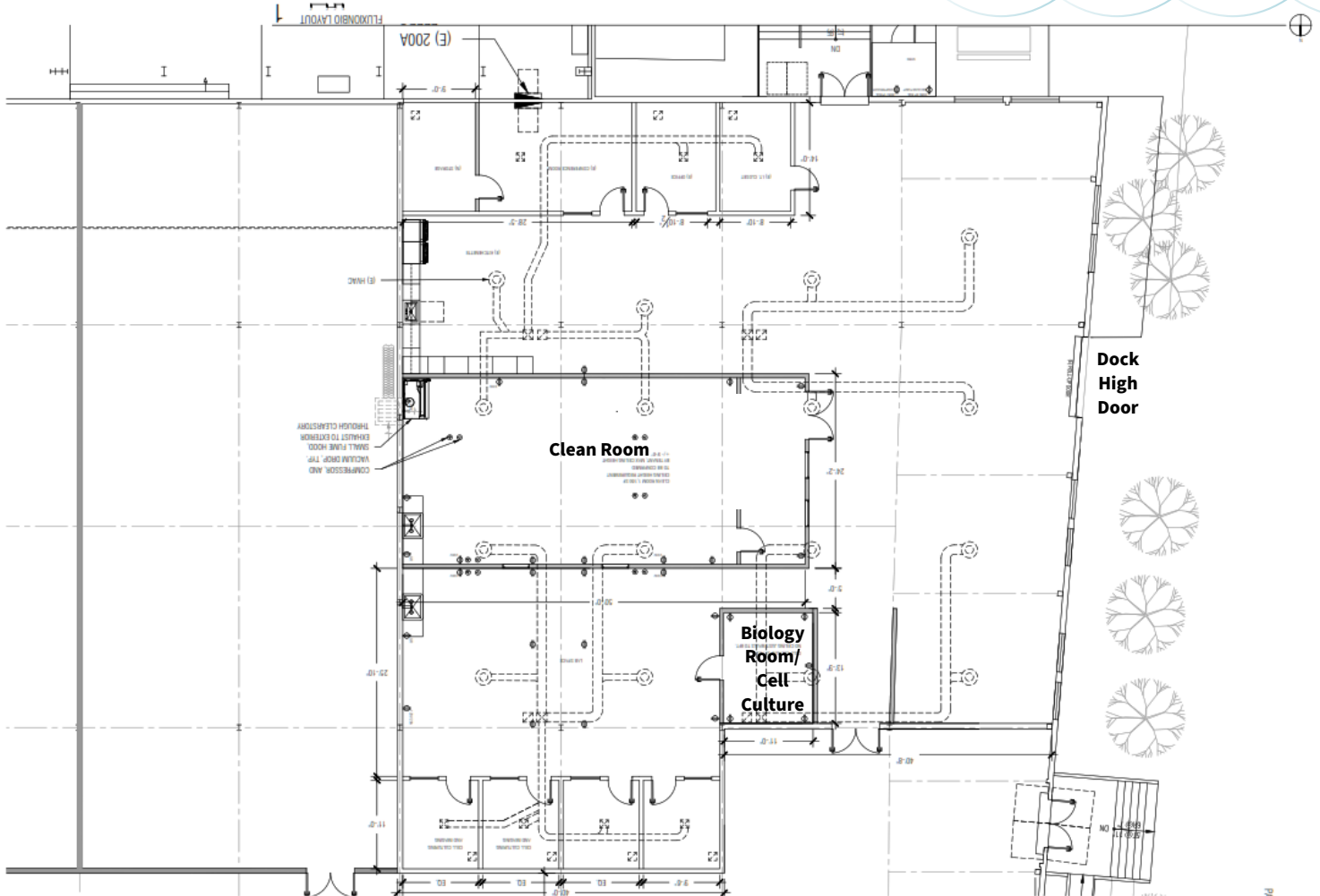
Jones Lang LaSalle Brokerage, Inc.
RE lic. #01856260

jll.com

For Sublease

1901 Poplar Street, Suite A, Oakland, CA

Suite B - 8,527 RSF



Floor Plan Not To Scale

Kristi Childers
Managing Director
kristi.childers@jll.com
+1 510 812 2878
License #01997043

Charlie Sweeney
Vice President
charlie.sweeney@jll.com
+1 510 593 8035
License #01987199

Eddie Shuai
Senior Managing Director
eddie.shuai@jll.com
+1 415 336 3573
License #01454419

Although information has been obtained from sources deemed reliable, neither Owner nor JLL makes any guarantees, warranties or representations, express or implied, as to the completeness or accuracy as to the information contained herein. Any projections, opinions, assumptions or estimates used are for example only. There may be differences between projected and actual results, and those differences may be material. The Property may be withdrawn without notice. Neither Owner nor JLL accepts any liability for any loss or damage suffered by any party resulting from reliance on this information. If the recipient of this information has signed a confidentiality agreement regarding this matter, this information is subject to the terms of that agreement. ©2024. Jones Lang LaSalle Brokerage, Inc. All rights reserved.