

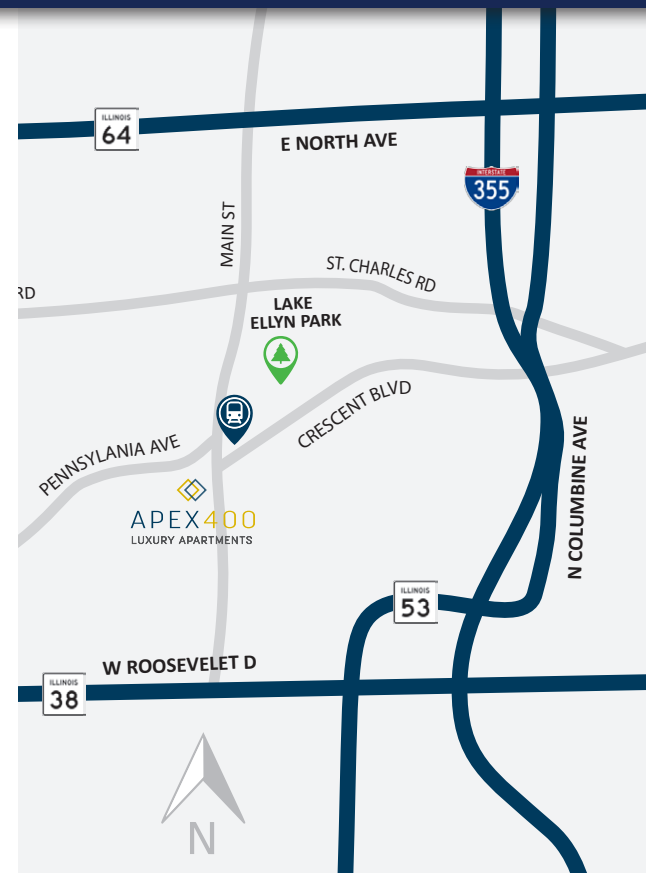
**FOR  
LEASE**

  
**APEX400**  
LUXURY APARTMENTS

**400 N. MAIN ST, GLEN ELLYN, IL 60137**

**PRIME RETAIL SPACE | OPEN FLOOR PLAN  
DOWNTOWN GLEN ELLYN**

- **3,267 SF** – first-floor, brand-new retail space
- **Asking Lease Rate** – \$36.00 PSF NNN
- **Prime Downtown Glen Ellyn Location** – high foot & vehicle traffic
- **Highly Visible Corner Property** – excellent signage opportunities
- **Large Display Windows** – maximum exposure
- **Shell Space** – flexible layout for retail, boutique or restaurant
- **Ample Parking Nearby** – easy access for customers & employees
- **Surrounded by Shops & Restaurants** – thriving business district
- **Steps from Metra Station** – strong commuter presence



**HAYMAN COMPANY** 

29100 Northwestern Hwy, Suite 410, Southfield, MI 48034  
[www.haymancompany.com](http://www.haymancompany.com)

**John Cohen**  
773.316.2138  
[jcohen@haymanco.com](mailto:jcohen@haymanco.com)

Disclaimer: Information is deemed reliable but not guaranteed. Terms, availability, and details are subject to change.

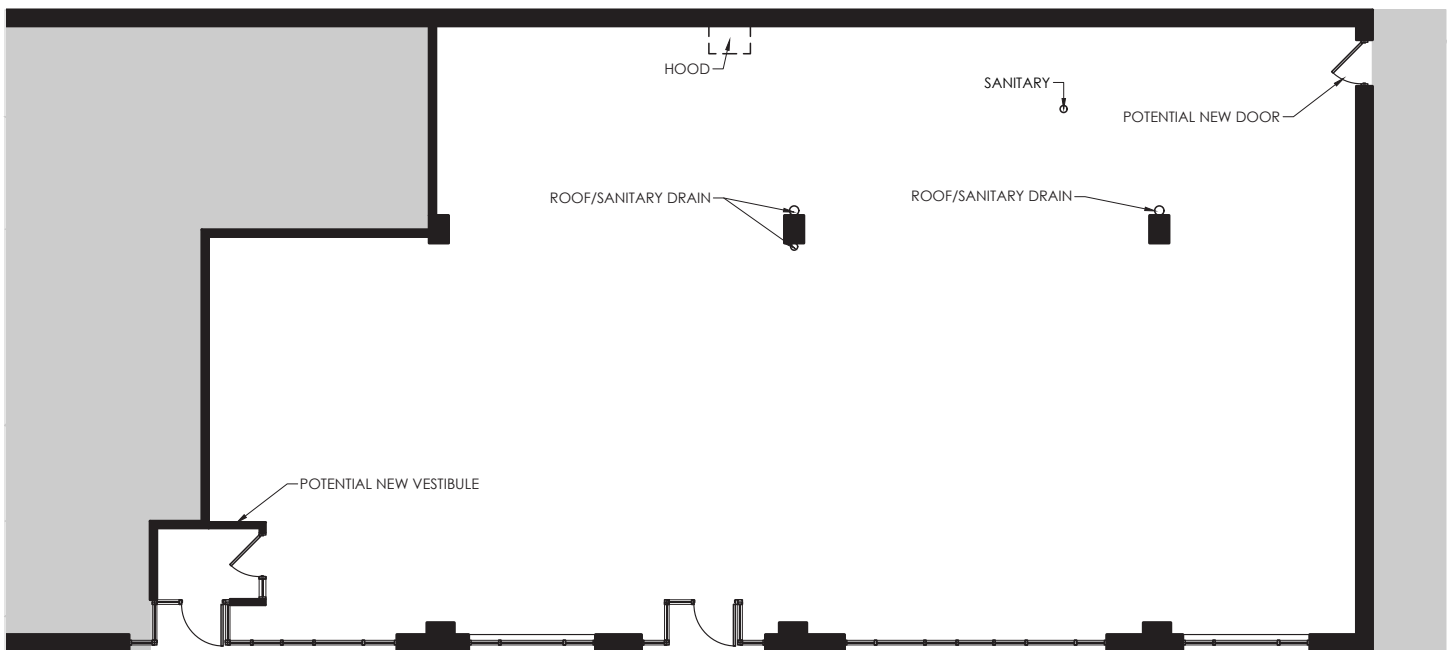
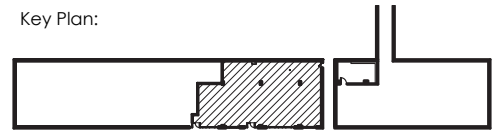
# FLOOR PLAN

## 400 N. MAIN ST, GLEN ELLYN, IL

SUITE 117: 3,267 SF



Key Plan:



### Suite #117 - Proposed Conditions

3,267 Square Feet

Scale:

N.T.S.