

An As Built Marketing Package for
Luke Business Park

1100 Luke Street
Irving, Texas 75061

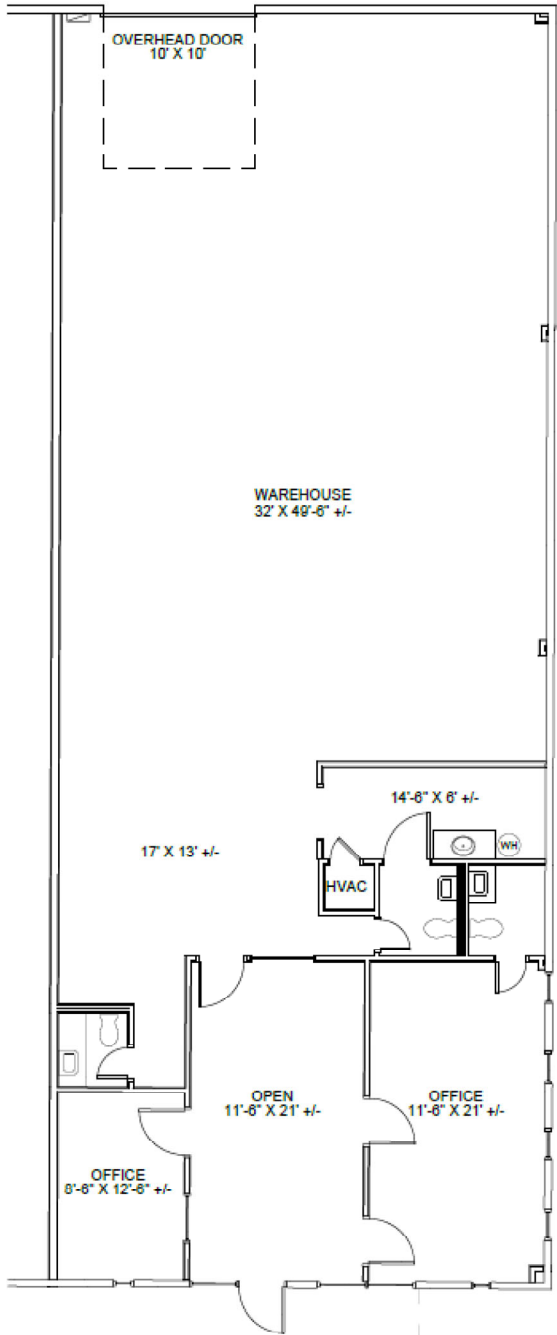
Sheet **A1**
Of 10 Sheet(s)

Scale: Not to Scale
Sheet Size: 11" x 8.5"
Not For Construction



**BAY
SPACE**

© 2025 HosScans, LLC.
All right reserved.
These drawings and any associated
documents are protected under U.S.
copyright law. No part of this work may
be produced, distributed, or used in any
form, by any method, for any purpose,
without the prior written consent of
HosScans, LLC. Unauthorized use is
subject to legal action.



As Built Floor Plan for Marketing

