

# TOOELE RETAIL SPACE

205-245 N Main St Tooele, UT 84074



Investment Realty  
ADVISORS

## EVAN WRYE

Vice President of Commercial Leasing  
385.469.0920  
evan@iraut.com

## ELLIOT ABEL

Associate Broker  
435.485.7070  
elliot@iraut.com

*3,900 SF of Office Space Available*

## PROPERTY SUMMARY

**PROPERTY DESCRIPTION**

This Tooele Retail Plaza is a well-located strip center with ample parking (115 stalls) in the midst of Tooele's business and retail area. Amazing visibility on busy Main St! Average Daily Traffic along main street is 37,500.

Located at 205 N Main St, Tooele, UT 84074.

Unit 205-207: Available now, this versatile commercial retail office space offers an ideal blend of functionality and visibility for your business. Featuring large windows that flood the space with natural light, the layout includes multiple private offices, a spacious open work area, a conference room, and a convenient kitchenette.

With both front and rear entrances, ample parking, and prominent front signage, the property is designed for ease of access and strong curb appeal. Additional storage closets throughout the space provide practical organization, making it perfect for a range of professional, retail, or service-based users.

**OFFERING SUMMARY**

Lease Rate:	\$11 SF/YR
Lease Type:	NNN
CAM:	\$5 SF/YR
Available Units:	1
Available SF:	3,900 SF
AADT:	37,500
Building Size:	33,956 SF
Lot Size:	2.75 Acres

<b>DEMOGRAPHICS</b>	<b>1 MILE</b>	<b>3 MILES</b>	<b>5 MILES</b>
Total Households	3,519	12,423	13,857
Total Population	9,772	35,929	41,239
Average HH Income	\$56,593	\$61,001	\$64,174

**EVAN WRYE**

Vice President of Commercial Leasing  
 385.469.0920  
 evan@iraut.com

**ELLIOT ABEL**

Associate Broker  
 435.485.7070  
 elliot@iraut.com

# SITE & AVAILABILITY



**EVAN WRYE**

Vice President of Commercial Leasing  
385.469.0920  
evan@iraut.com

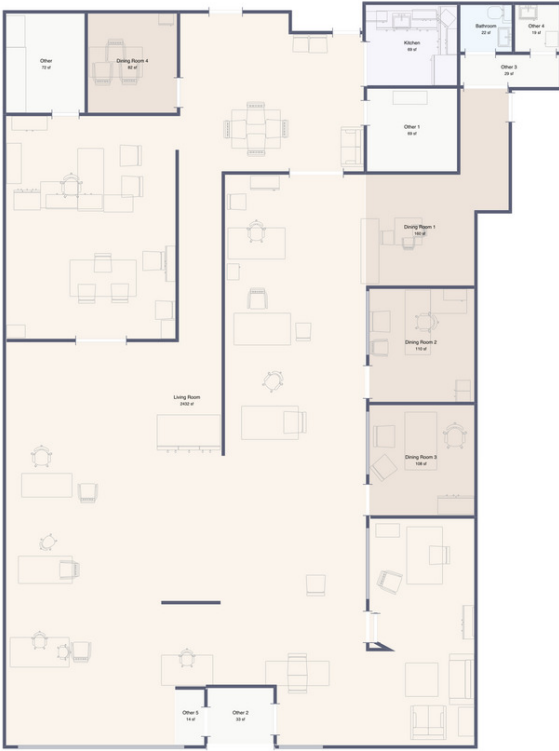
**ELLIOT ABEL**

Associate Broker  
435.485.7070  
elliott@iraut.com

Investment Realty Advisors  
411 W 7200 S, Suite 201, Midvale, UT 84047

205-245 N MAIN ST TOOELE, UT 84074

UNIT 205-207  
3,900 SF  
AVAILABLE JUNE 1



**EVAN WRYE**  
Vice President of Commercial Leasing  
385.469.0920  
evan@iraut.com

**ELLIOT ABEL**  
Associate Broker  
435.485.7070  
elliott@iraut.com

Investment Realty Advisors  
411 W 7200 S, Suite 201, Midvale, UT 84047

# LOCATION MAP



Google

Imagery ©2025 Airbus, Maxar Technologies, USDA/FPAC/GEO

**EVAN WRYE**  
Vice President of Commercial Leasing  
385.469.0920  
evan@iraut.com

**ELLIOT ABEL**  
Associate Broker  
435.485.7070  
elliott@iraut.com

Investment Realty Advisors  
411 W 7200 S, Suite 201, Midvale, UT 84047