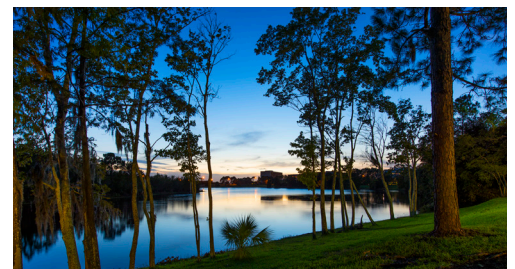




## Upscale Office/Flex/ Distribution Park

- Grade-level and dock-high overhead doors
- Campus style setting with lush landscaping
- Professionally managed
- Zoned IP (Industrial Park) - City of Orlando
- Ample parking at 3.24/1,000 sf
- Located one (1) mile from the front door of the Orlando International Airport (MCO)



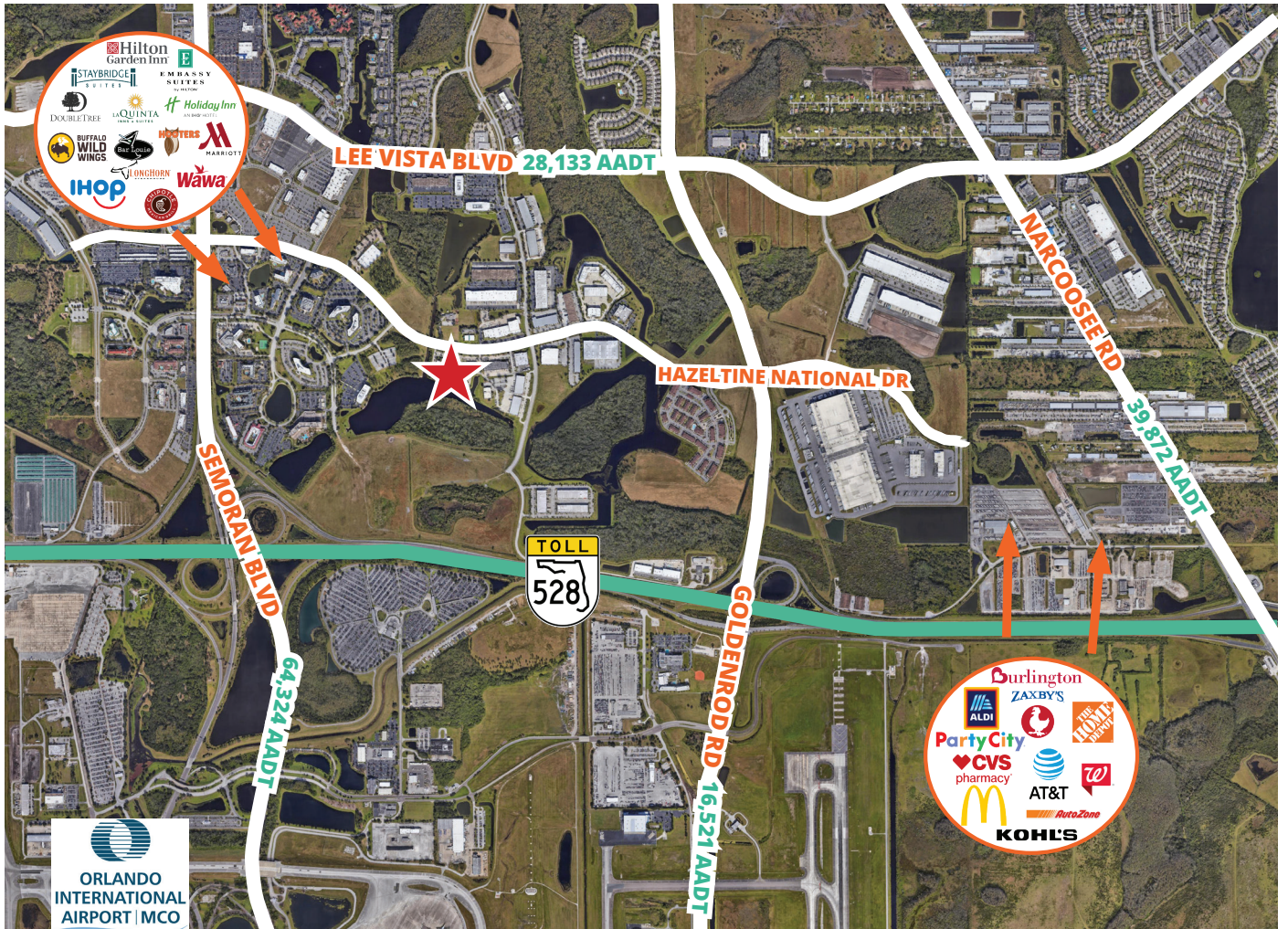
**For further  
information**

**Lisa Bailey, SIOR**  
Principal  
+1 407 440 6645  
lisa.bailey@avisonyoung.com

[avisonyoung.com](http://avisonyoung.com)

# Office/Flex/Distribution Space

Lake Point Business Park  
6200-6360 Hazeltine National Dr  
Orlando, FL 32822



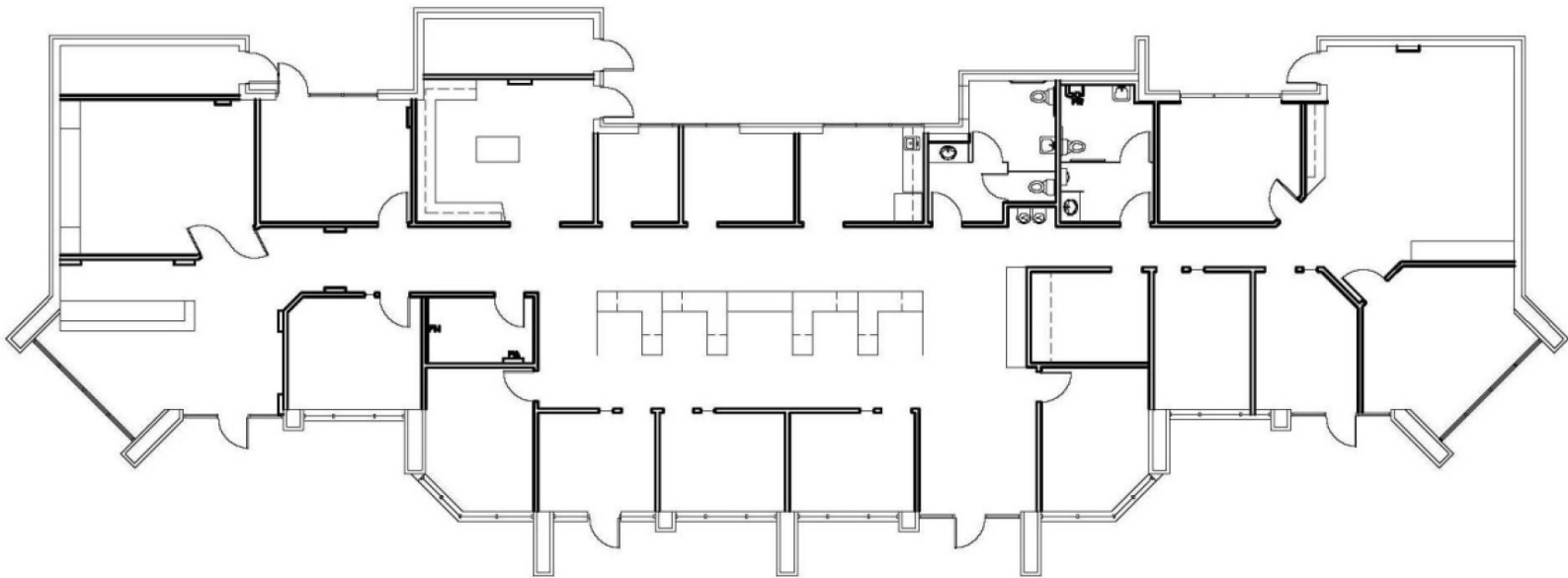
For further  
information

**Lisa Bailey, SIOR**  
Principal  
+1 407 440 6645  
lisa.bailey@avisonyoung.com

avisonyoung.com

**Building 6200**  
**Suite 100- 6,740± SF**  
**100% Office Space**

**Lake Point Business Park**  
6200-6360 Hazeltine National Dr  
Orlando, FL 32822



**For further  
information**

**Lisa Bailey, SIOR**  
Principal  
+1 407 440 6645  
lisa.bailey@avisonyoung.com

avisonyoung.com

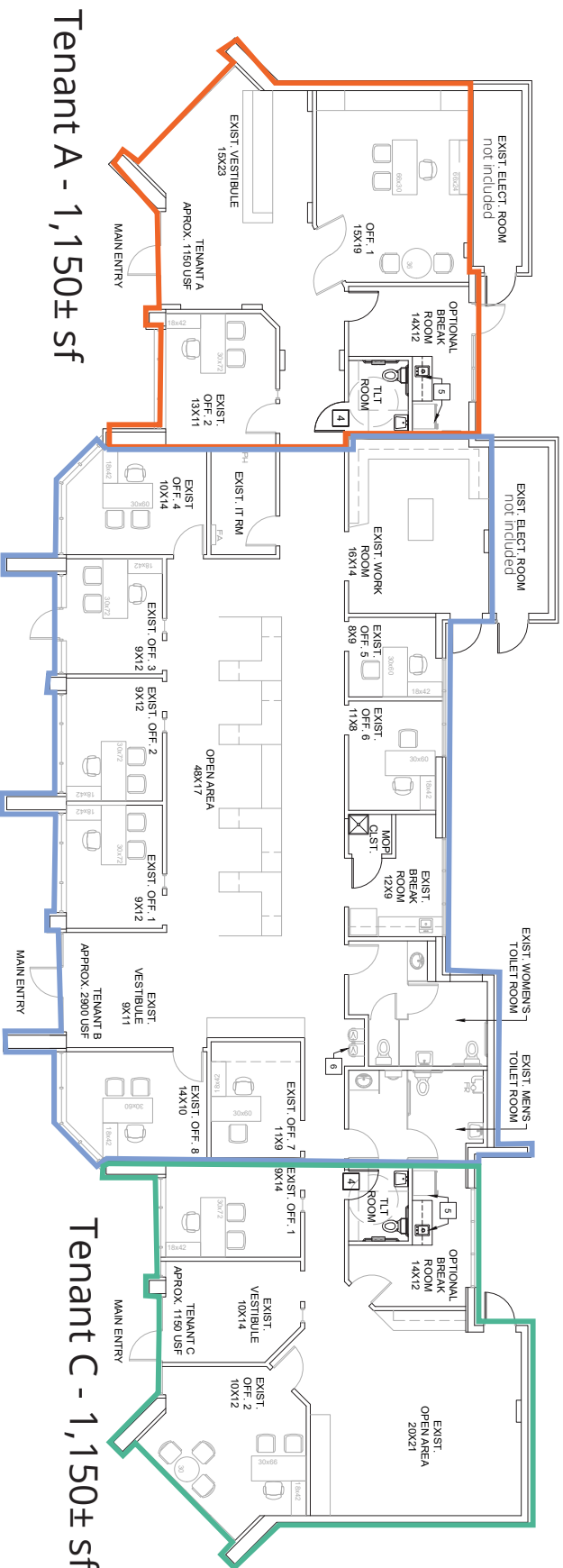
**Building 6200**  
**Suite 100 - 6,740± SF**  
**Property Pictures**

**Lake Point Business Park**  
6200-6360 Hazeltine National Dr  
Orlando, FL 32822



**Building 6200  
Suite 100**  
*Proposed Plan 1*  
*March 2025 Delivery*

**Lake Point Business Park**  
6200-6360 Hazeltine National Dr  
Orlando, FL 32822



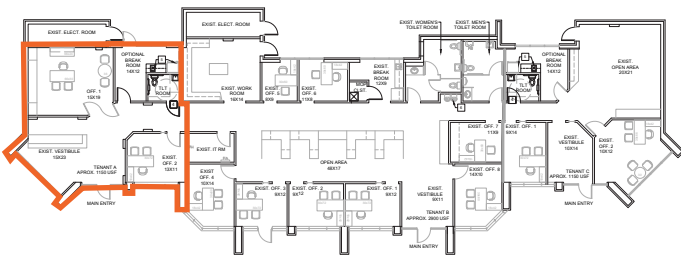
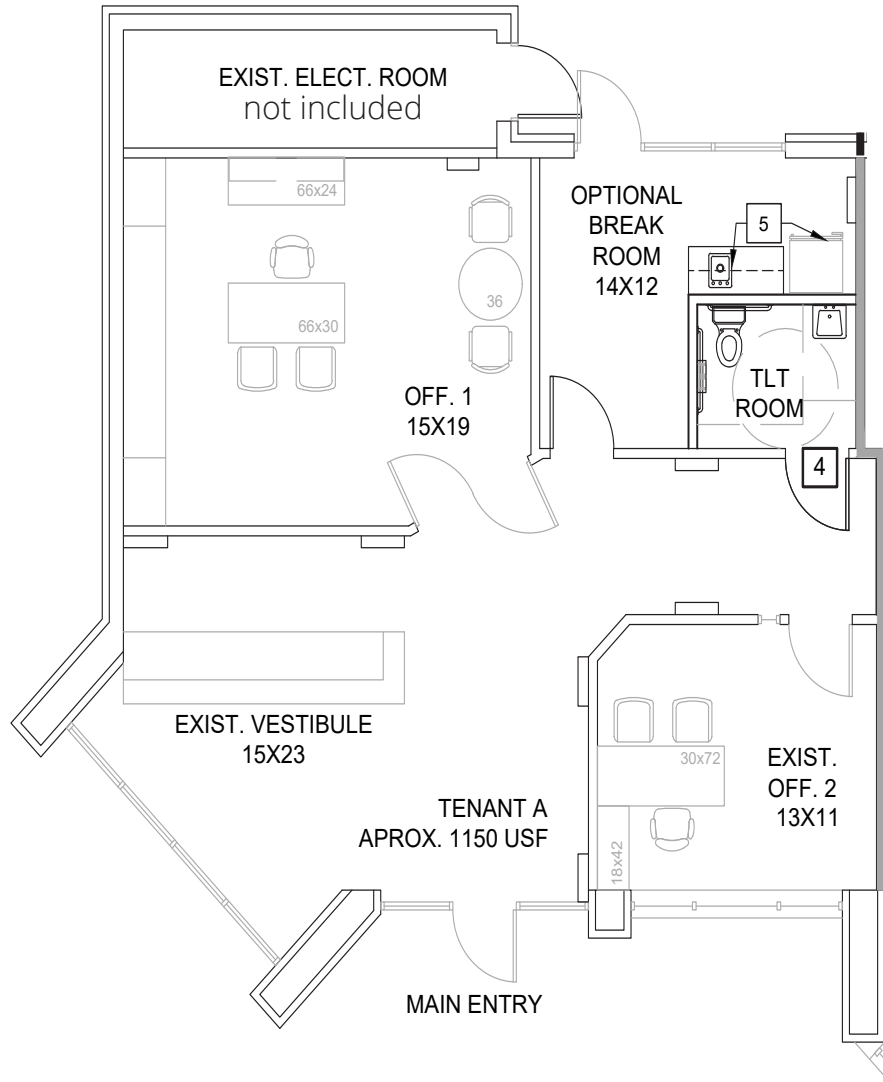
**For further  
information**

**Lisa Bailey, SIOR**  
Principal  
+1 407 440 6645  
lisa.bailey@avisonyoung.com

avisonyoung.com

**Building 6200**  
**Suite 100**  
*Proposed Plan 1*  
*Tenant A - 1,150± sf*  
*March 2025 Delivery*

**Lake Point Business Park**  
 6200-6360 Hazeltine National Dr  
 Orlando, FL 32822



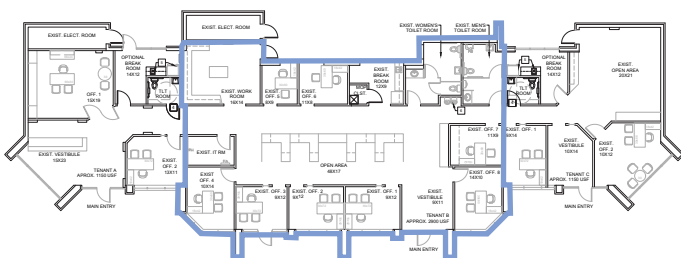
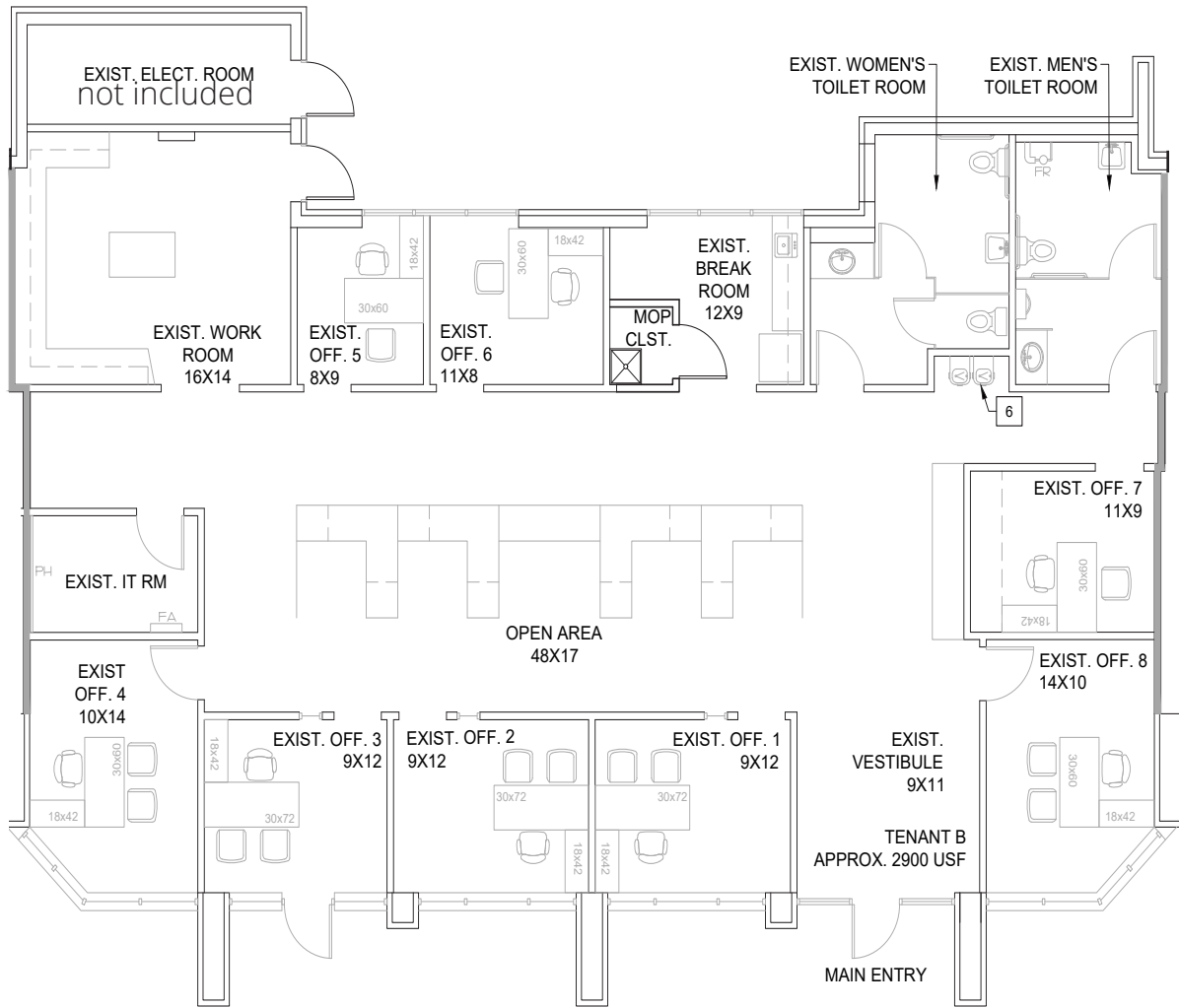
**For further information**

**Lisa Bailey, SIOR**  
 Principal  
 +1 407 440 6645  
 lisa.bailey@avisonyoung.com

avisonyoung.com

**Building 6200**  
**Suite 100**  
*Proposed Plan 1*  
*Tenant B - 2,900± sf*  
*March 2025 Delivery*

**Lake Point Business Park**  
 6200-6360 Hazeltine National Dr  
 Orlando, FL 32822



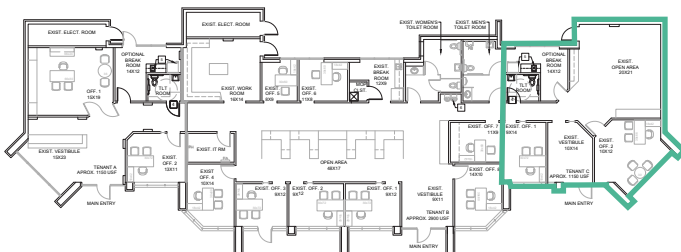
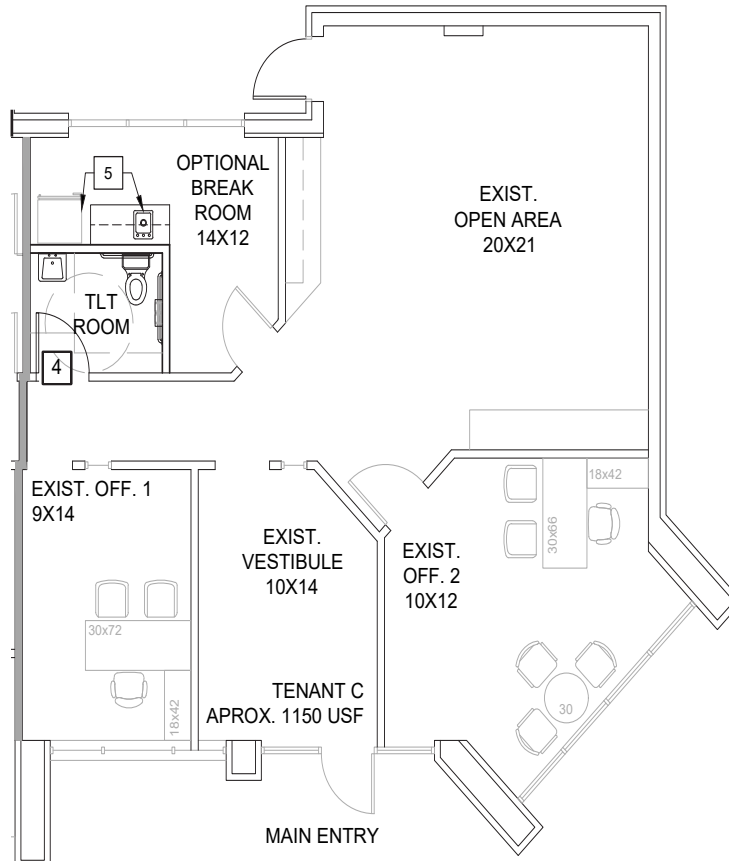
**For further  
 information**

**Lisa Bailey, SIOR**  
 Principal  
 +1 407 440 6645  
 lisa.bailey@avisonyoung.com

avisonyoung.com

**Building 6200**  
**Suite 100**  
*Proposed Plan 1*  
*Tenant C - 1,150± sf*  
*March 2025 Delivery*

**Lake Point Business Park**  
 6200-6360 Hazeltine National Dr  
 Orlando, FL 32822



**For further information**

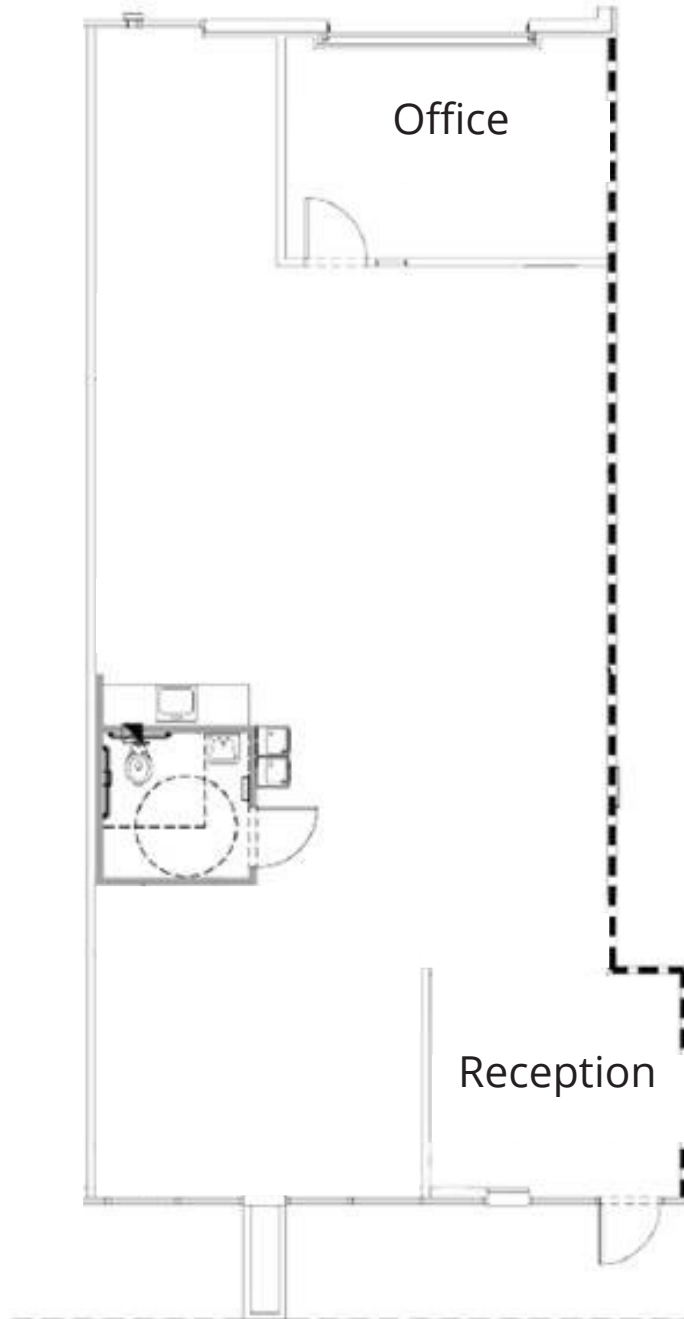
**Lisa Bailey, SIOR**  
 Principal  
 +1 407 440 6645  
 lisa.bailey@avisonyoung.com

avisonyoung.com



**Building 6220**  
**Suite 114 - 1,863± SF**  
**100% Office Space**

**Lake Point Business Park**  
6200-6360 Hazeltine National Dr  
Orlando, FL 32822



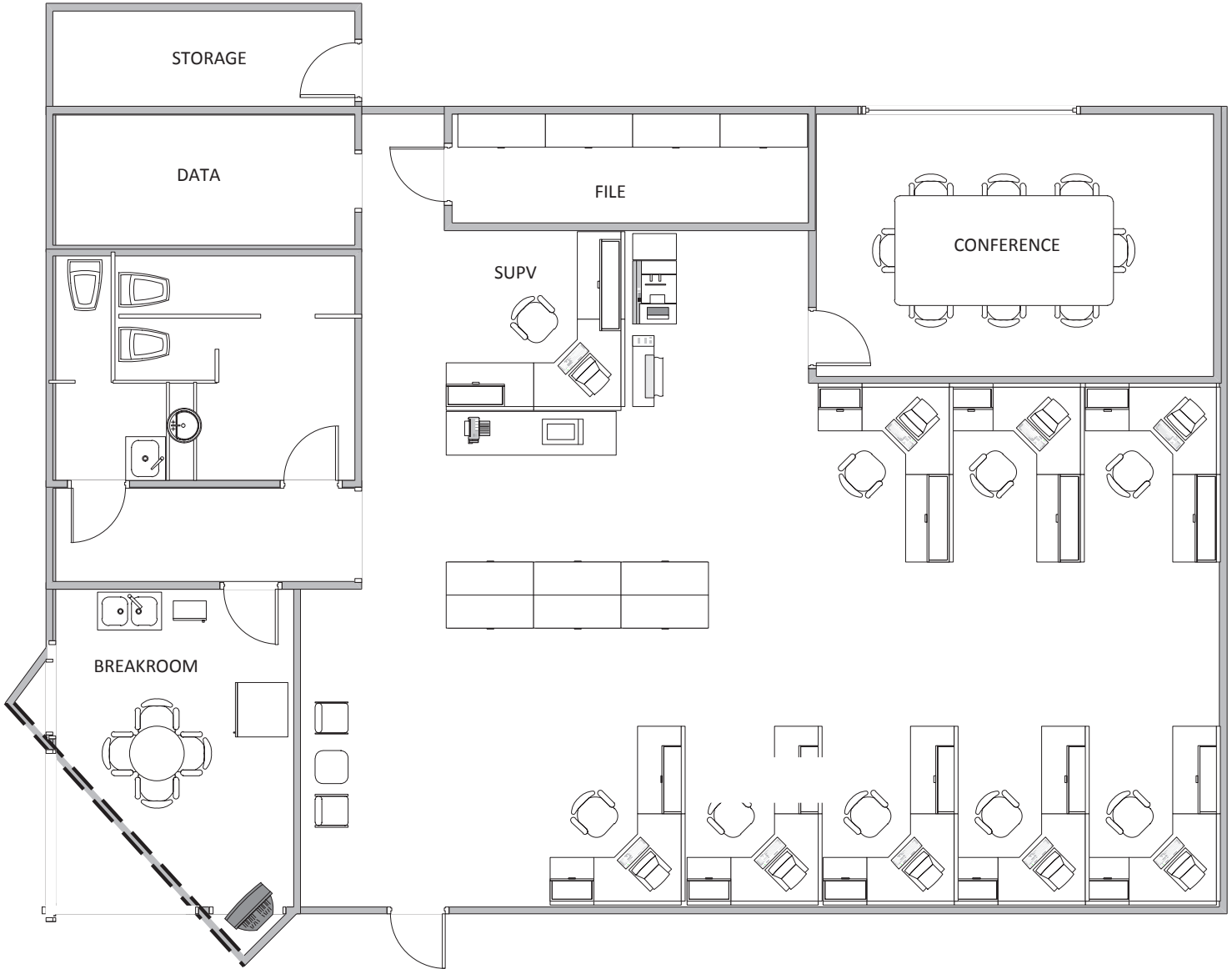
**For further  
information**

**Lisa Bailey, SIOR**  
Principal  
+1 407 440 6645  
lisa.bailey@avisonyoung.com

avisonyoung.com

**Building 6250**  
**Suite 116 - 2,606± SF**  
**100% Office Space**

**Lake Point Business Park**  
6200-6360 Hazeltine National Dr  
Orlando, FL 32822



**For further  
information**

**Lisa Bailey, SIOR**  
Principal  
+1 407 440 6645  
lisa.bailey@avisonyoung.com

avisonyoung.com