



## CORNER OFFICE SUITE AVAILABLE FOR LEASE IN PROSPECTOR

PROSPECTOR 1821 SIDEWINDER DRIVE #4 | PARK CITY, UTAH 84060

\$23 / SF NNN

**JILL SNYDER**  
435 671-0793  
jill@wswcommercial.com

**KATIE WILKING** CCIM, MRED  
435 640-4964  
katie@wswcommercial.com

**BERKSHIRE  
HATHAWAY** | UTAH  
HOMESERVICES | PROPERTIES

COMMERCIAL DIVISION

© 2024 BHH Affiliates, LLC. An independently owned and operated franchisee of BHH Affiliates, LLC. Berkshire Hathaway HomeServices and the Berkshire Hathaway HomeServices symbol are registered service marks of Columbia Insurance Company, a Berkshire Hathaway affiliate. Equal Housing Opportunity. Information not verified or guaranteed. Berkshire Hathaway HomeServices and/or its representatives do not warrant or guarantee this information. Information herein was provided by Owner/Seller. Lessee/Purchaser is responsible to confirm any information considered a factor in a decision to lease or purchase.



# PROPERTY PHOTOS

PROSPECTOR 1821 SIDEWINDER DRIVE #4 | PARK CITY, UTAH 84060





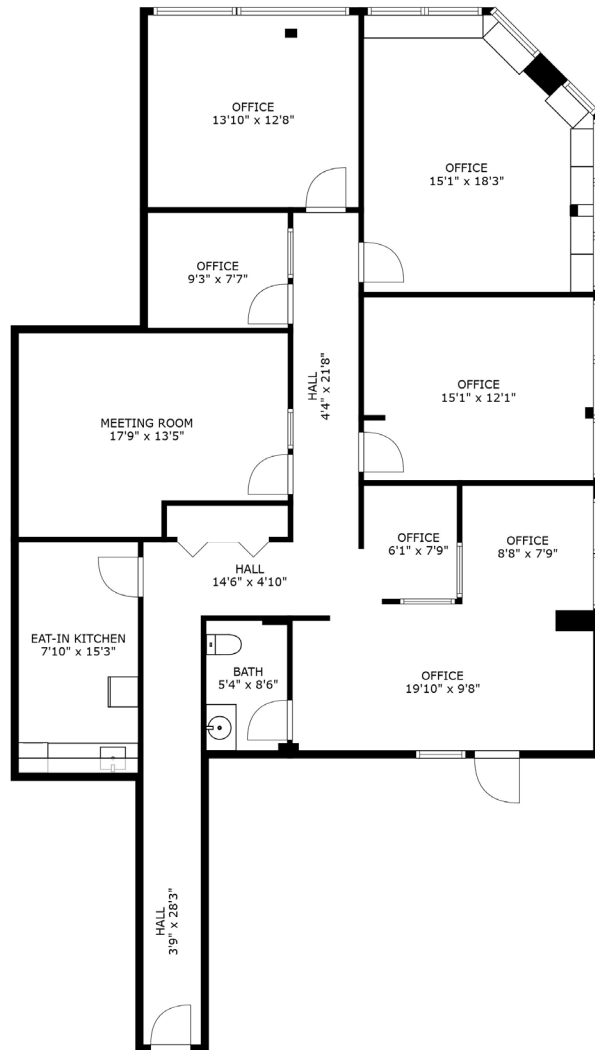
# PROPERTY PHOTOS

PROSPECTOR 1821 SIDEWINDER DRIVE #4 | PARK CITY, UTAH 84060



# FLOOR PLAN

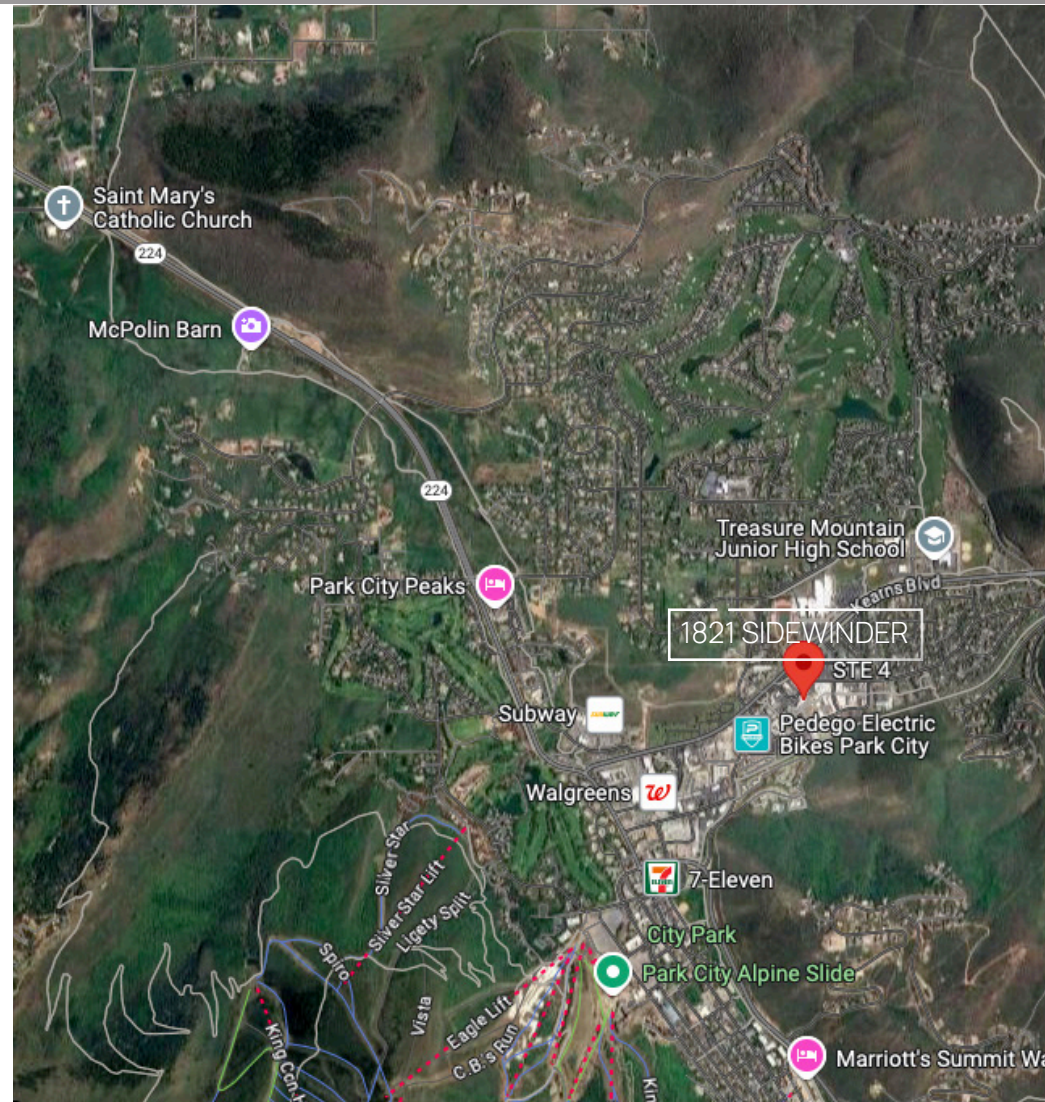
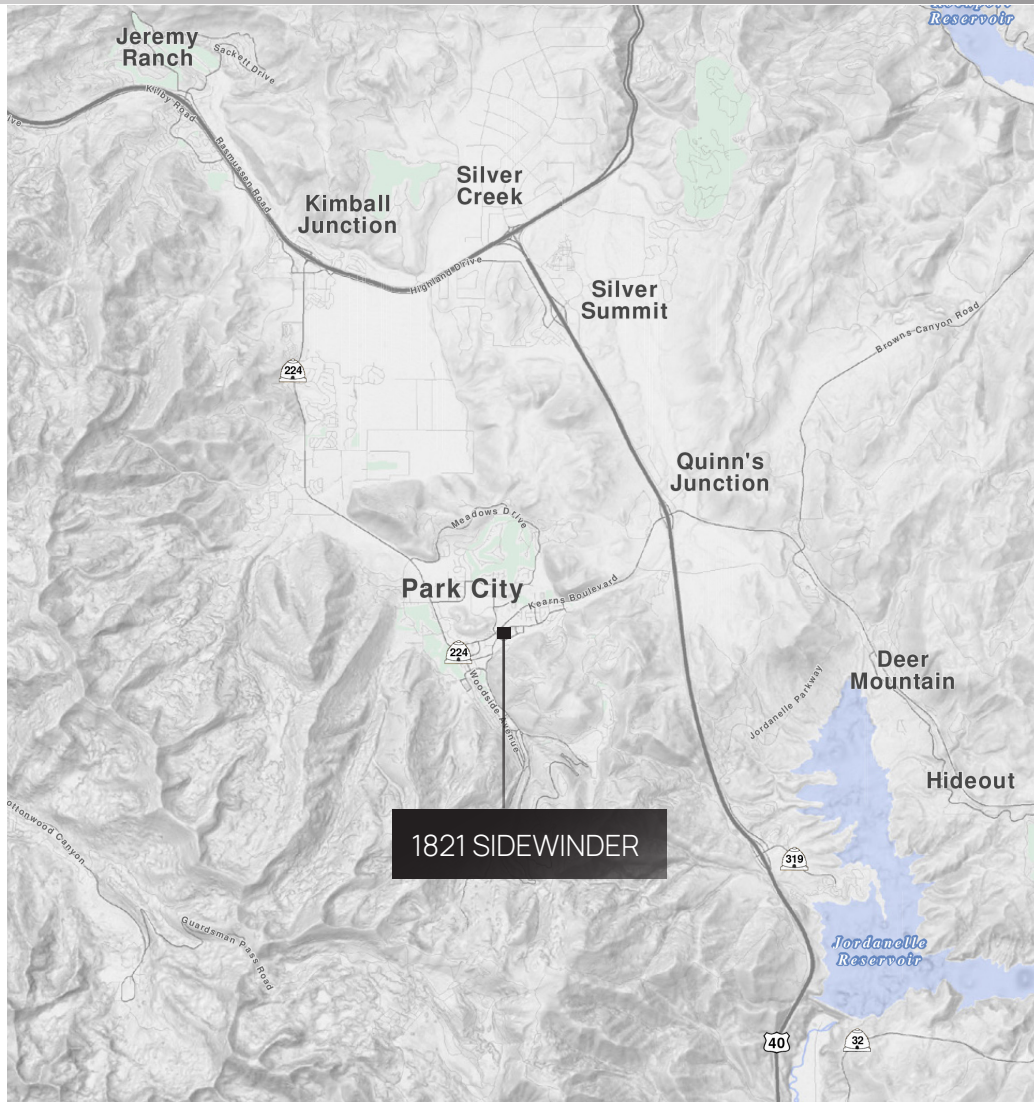
PROSPECTOR 1821 SIDEWINDER DRIVE #4 | PARK CITY, UTAH 84060





# LOCATION

PROSPECTOR 1821 SIDEWINDER DRIVE #4 | PARK CITY, UTAH 84060







## PROSPECTOR

1821 SIDEWINDER DRIVE #4  
PARK CITY, UT 84060

- 1,832 SF
- Second floor office in established building
- Bright and open with high ceilings
- Great parking and easy access from HWY 224 and 248
- Kitchenette and private restroom
- 4-unit building with established, long-term tenancy
- Includes 210 SF bonus lower-level storage room
- Located in prospector square
- On free bus route
- Walk to the gym, coffee shops, and restaurants

CALL FOR MORE INFORMATION

[BHHSUTAH.COM](https://www.bhhsutah.com)

**JILL SNYDER**  
435 671-0793  
[jill@wswcommercial.com](mailto:jill@wswcommercial.com)

**KATIE WILKING** CCIM, MRED  
435 640-4964  
[katie@wswcommercial.com](mailto:katie@wswcommercial.com)

**BERKSHIRE  
HATHAWAY** | UTAH  
HOMESERVICES | PROPERTIES

COMMERCIAL DIVISION