

The logo for NAI Commercial, featuring the letters 'NAI' in a stylized, bold font followed by the word 'Commercial' in a clean, sans-serif typeface.

NAI Commercial

FOR SUBLEASE
310 – 221 Esplanade West
Office Unit



310 - 221 Esplanade West
North Vancouver, BC

Jesse Godin

Senior Associate
Commercial Sales & Leasing
604 691 6636
jgodin@naicommercial.ca

John Freyvogel*

Vice President, Leasing & Sales
604 691 6640
jfreyvogel@naicommercial.ca
*Personal Real Estate Corporation

NAI Commercial

1075 W Georgia St, Suite 1300
Vancouver, BC V6E 3C9
+1 604 683 7535
naicommercial.ca

310 - 221 Esplanade West

North Vancouver, BC

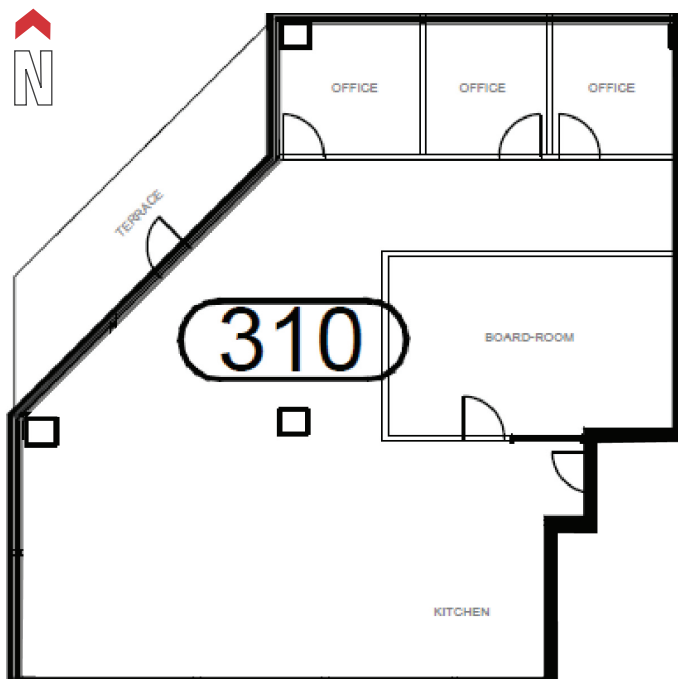
Opportunity

To sublease premium office space in the vibrant heart of Lower Lonsdale, North Vancouver. This "A" Class office building sits prominently along the south side of Esplanade, offering stunning harbour views and an exceptional professional setting.

Built in 1983, the property features six floors totaling approximately 152,726 rentable square feet, with efficient average floor plates of 25,454 square feet. The building is predominantly office space, complemented by limited-service retail at street level, creating a dynamic and convenient environment.

Updated common areas, on-site security, and ample on-site parking. Ideally located just steps from Lonsdale Quay Market, The Shipyards, Waterfront Park, and the Lonsdale Quay SeaBus Terminal, this property offers unmatched accessibility and amenities in one of North Vancouver's most sought-after business districts.

Floor Plan



Property Details

Unit Size

2,166 SF (plus private deck)

Sublease Expiry

Short term sublease of 1-2 years preferred

Availability

Immediate

Year Built

1983

Property Type

Class A

Basic Rent

Please contact the listing agents

Additional Rent

\$23.40/SF (2026 estimate)

Parking

2 reserved stalls at the current building rate





Jesse Godin
 Senior Associate
 Commercial Sales & Leasing
 604 691 6636
 jgodin@naicommercial.ca

John Freyvogel*
 Vice President, Leasing & Sales
 604 691 6640
 jfreyvogel@naicommercial.ca
 *Personal Real Estate Corporation



No warranty or representation, express or implied, is made as to the accuracy of the information contained herein, and the same is submitted subject to errors, omissions, change of price, rental or other conditions, prior sale, lease or financing, or withdrawal without notice, and of any special listing conditions imposed by our principals no warranties or representations are made as to the condition of the property or any hazards contained therein are any to be implied.

NAI Commercial | 1300-1075 W Georgia St
 Vancouver, BC V6E 3C9 | naicommercial.ca