

Sublease Available

cresa

# Phoenix Gateway Center 410 N. 44th St. Phoenix, AZ

## Space Profile

<b>Premises</b>	Suite 210
<b>RSF</b>	6,289 RSF
<b>Rental Rate</b>	Call for details
<b>Availability</b>	Immediate
<b>Term</b>	Through 12/31/2027
<b>Building Class</b>	A
<b>Submarket</b>	44th Street Corridor
<b>Built</b>	1988 Renov 2021
<b>Parking</b>	4.00/1000

## Space Features

- Furniture potentially available for plug & play scenario
- 13 Private Offices
- 2 Large Conference Rooms
- 1 Small Conference Room
- 1 Breakroom
- 13 Cubicles
- 9 Cubicles in bullpen
- Copy Area
- IT Room
- Storage Room

## For More Information

Cresa  
2398 E Camelback Rd.  
Suite 900  
Phoenix, AZ 85014  
[cresa.com/phoenix](http://cresa.com/phoenix)



Brandon Clarke  
602-770-3464  
[bclarke@cresa.com](mailto:bclarke@cresa.com)

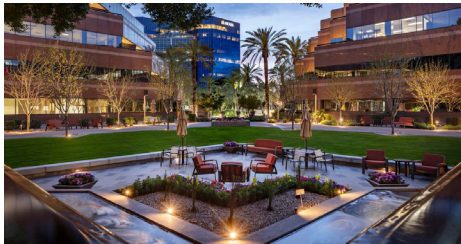
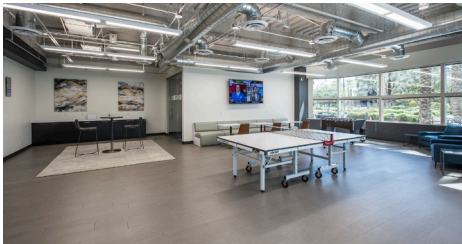
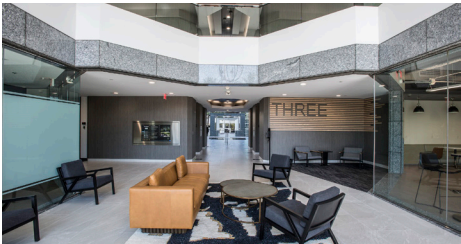


**Phoenix Gateway Center  
410 N. 44th St., Suite 210  
Phoenix, AZ**

**Building Features**

- Fitness Center
- Onsite Deli
- Tenant Conference Center
- Easy access to Loop 202 freeway
- Close proximity to Phoenix Sky Harbor International Airport and directly North of the PHX Sky Train stop
- Close proximity to numerous retail and restaurant amenities
- Newly renovated lobby and common areas

**Map**



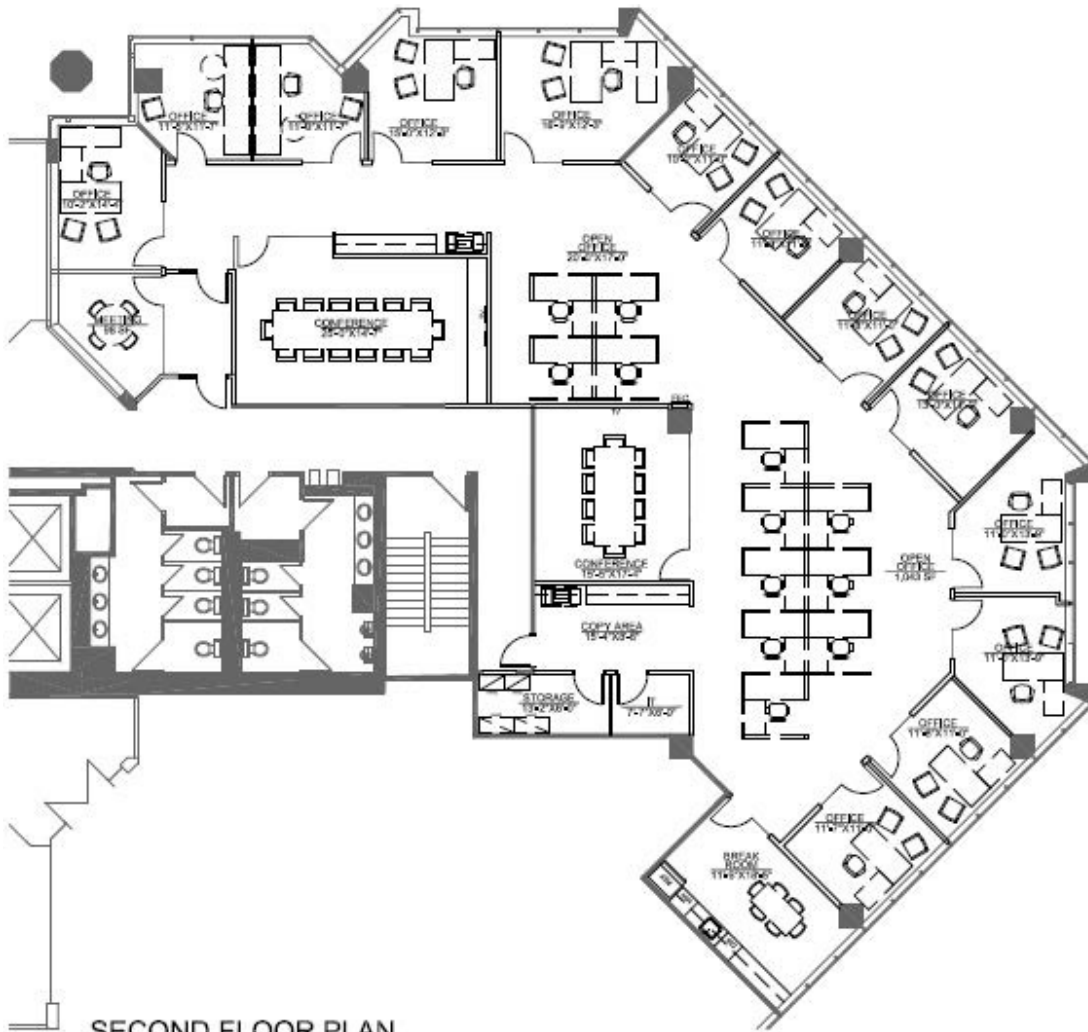
Even though obtained from sources deemed reliable, no warranty or representation, express or implied, is made as to the accuracy of the information herein, and it is subject to errors, omissions, change of price, rental or other conditions, withdrawal without notice, and to any special listing conditions imposed by our principals.



Phoenix Gateway Center  
410 N. 44th St., Suite 210  
Phoenix, AZ

Suite 210 - 6,289 RSF

VIEW THE  
VIRTUAL TOUR **360**



SECOND FLOOR PLAN



KEY PLAN



Phoenix Gateway Center  
410 N. 44th St., Suite 210  
Phoenix, AZ

## Interior Photos



## For More Information

Cresa  
2398 E Camelback Rd.  
Suite 900  
Phoenix, AZ 85019  
[cresa.com/phoenix](http://cresa.com/phoenix)



Brandon Clarke  
602-770-3464  
[bclarke@cresa.com](mailto:bclarke@cresa.com)