

SUNSET MEDIA CENTER

6255 SUNSET BLVD

STAND TALL.
STAND OUT.
STAND PROUD.

BARKER
PACIFIC
GROUP



Hankey Investment Company





SUNSET MEDIA CENTER

Welcome to Sunset Media Center (SMC), Hollywood's most innovative vertical office campus located in the heart of Media Row. SMC offers redefined common areas, a sun-drenched outdoor plaza with neighborhood retail hot spots, and ample creative spaces throughout the property.

Join the growing collective of Hollywood's elite who call SMC home, including Media Res, Com2uS, Magical Elves, and a number of production companies.

Building Size	±325,772 sq. ft.
No. of Floors	22
Average Floor Plate	±18,500 sq. ft.
Year Renovated	2025
Slab to Slab	11'10"

HIGHLIGHTS



Heart of Hollywood's Business District

Steps to the LA Metro and endless amenities



360 Degree Views

Unobstructed from Pacific Ocean to Hollywood Sign to downtown LA



Parking

On-site garage 2.5/1,000, with visitor valet



On-Site Amenities

Restaurant, bar, bank, outdoor patios, indoor lounge, locker and shower rooms



On-Site Management Team



24-Hour Security



Sustainable Certifications

Energy Star, LEED Gold, Fitwel Certified, WELL Health-Safety Rated



Broker Bonus Available!

Up to \$3.00 psf on 5+ year lease term





TENANT LOUNGE EXPERIENCE



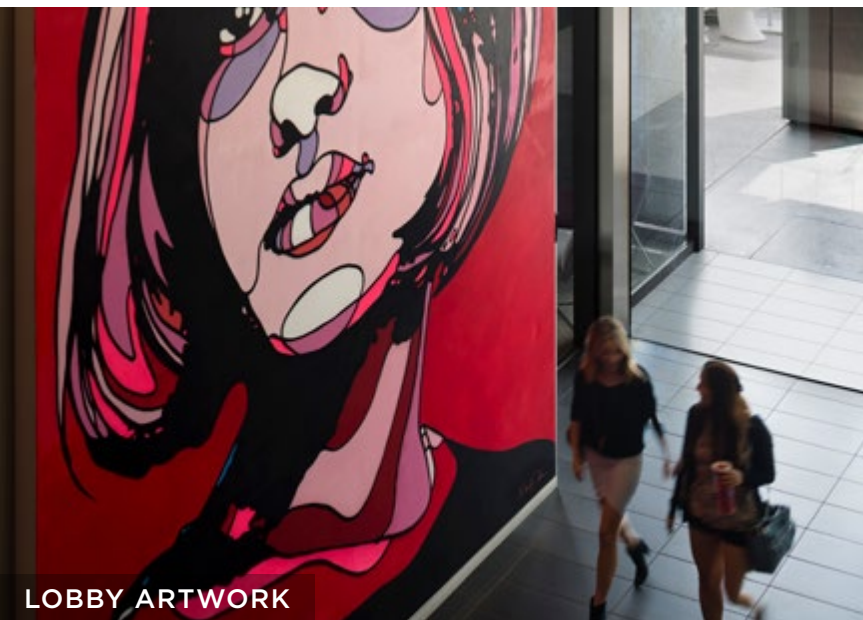
ON-SITE BUILDING MANAGEMENT



VALET



SUN DECK












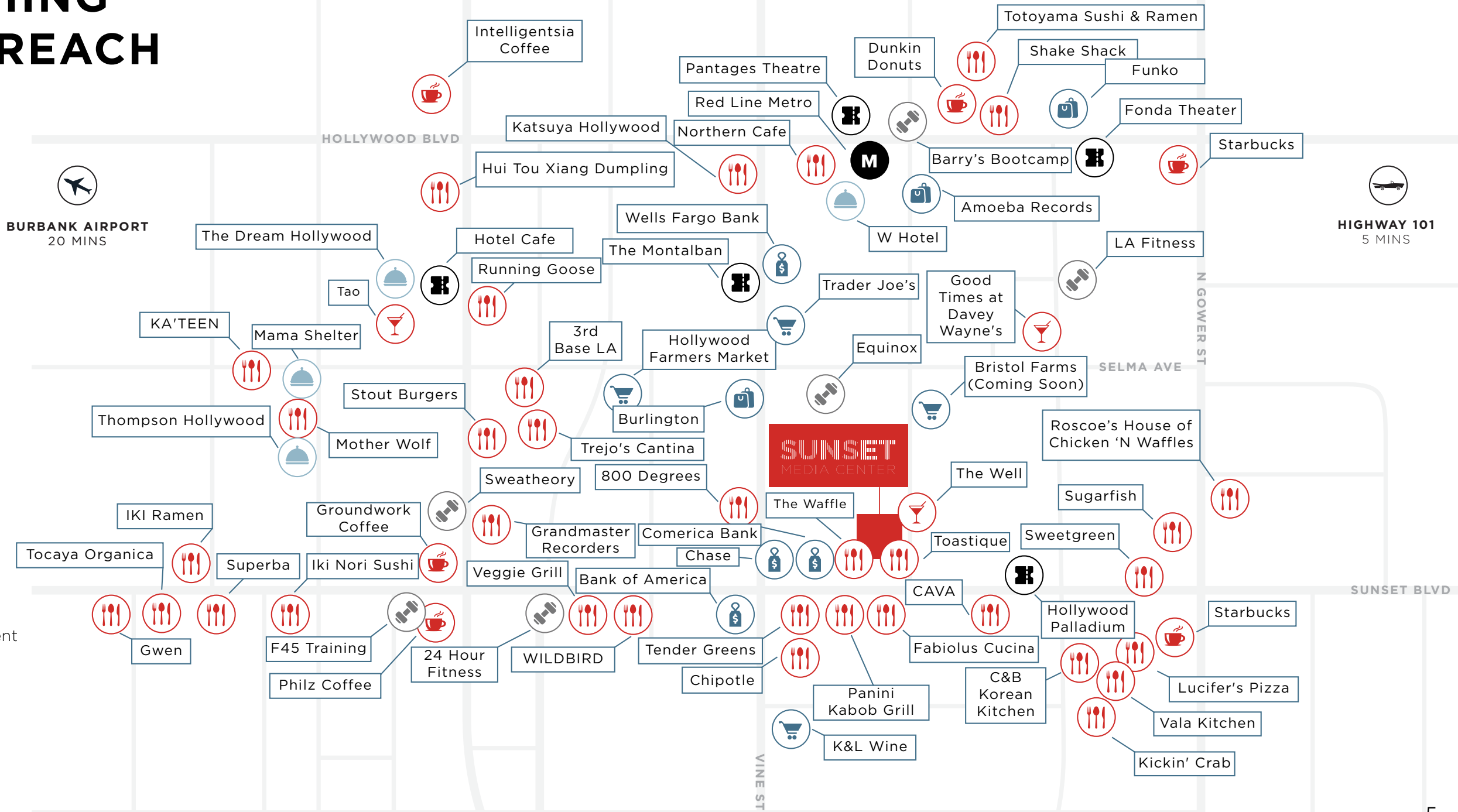
LOBBY ARTWORK



LOCKER ROOM & SHOWERS

EVERYTHING WITHIN REACH

-  Restaurant
-  Coffee
-  Bar
-  Grocery
-  Retail
-  Banking
-  Hotel
-  Fitness/Wellness
-  Theater/Entertainment





101

101

101

2

2

Sunset Blvd

Santa Monica Blvd

Melrose Ave

N La Brea Ave

N Highland Ave

Vine St

N Western Ave



AVAILABLE SPACE

FLOOR	SUITE	RSF	DESCRIPTION	AVAILABILITY
6255 W. Sunset Boulevard				
1 st	<u>110</u>	±4,855	Shell space	Now
6 th	<u>600</u>	±4,906	Move-in Ready / Creative	Now
6 th	<u>650</u>	±6,156	Move-in Ready / Creative	Now
7 th	<u>700</u>	±5,980	Move-in Ready / Creative	Now
7 th	<u>750</u>	±9,162	Move-in Ready / Creative	Now
8 th	<u>800</u>	±4,056	Move-in Ready / Creative	Now
8 th	<u>850</u>	±5,001	Move-in Ready / Creative	Now
9 th	<u>900</u>	±14,118	Move-in Ready / Creative	Now
11 th	<u>1111*</u>	±5,322	Move-in Ready / Creative	Now
11 th	<u>1150*</u>	±1,407	Move-in Ready / Creative	Now

* Suite 1111 and 1150 are contiguous for 6,729 RSF

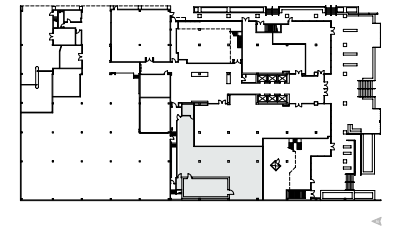
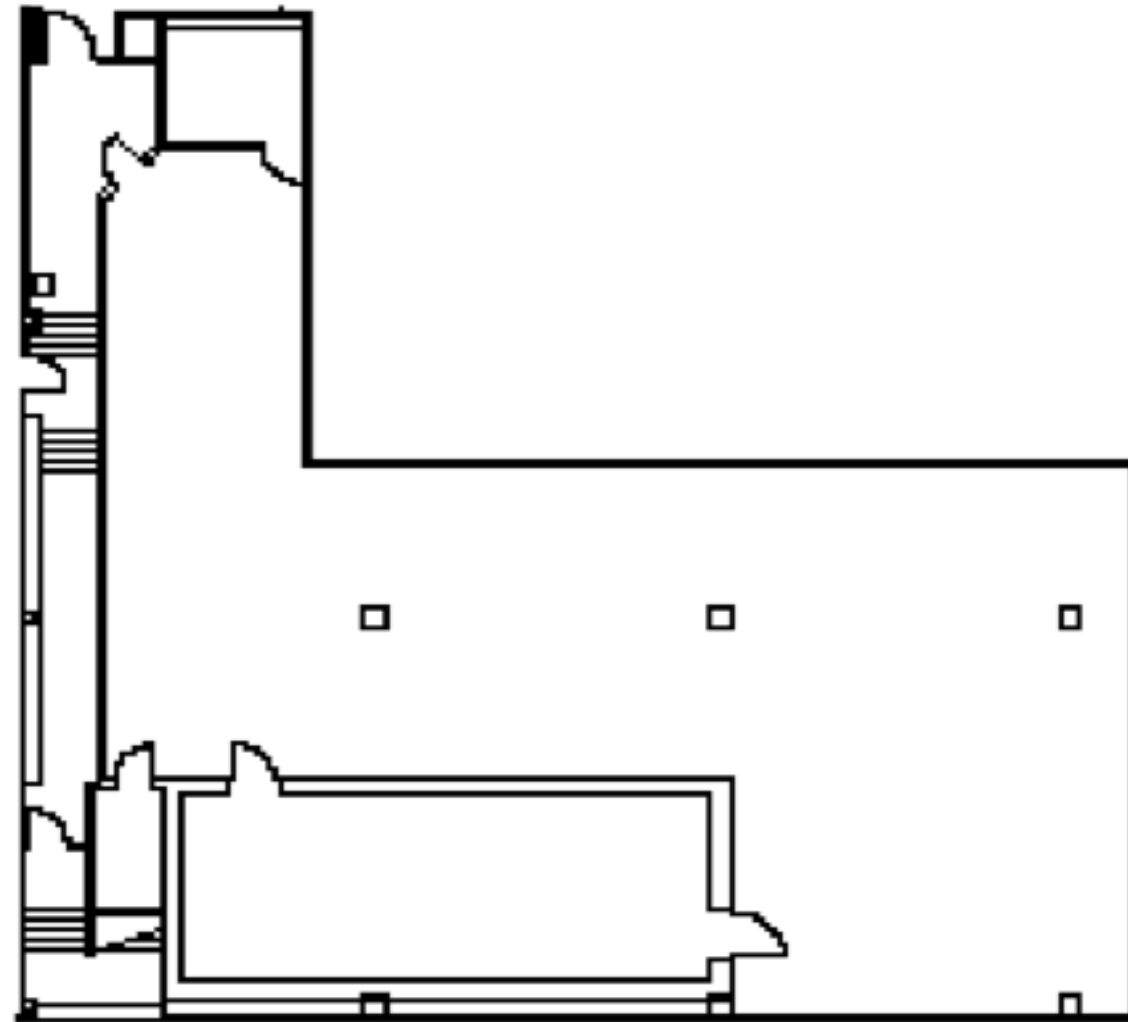
AVAILABLE SPACE

FLOOR	SUITE	RSF	DESCRIPTION	AVAILABILITY
6255 W. Sunset Boulevard				
12 th	<u>1200</u>	±18,599	Move-in Ready / Creative / Full floor	Now
15 th	<u>1520</u>	±2,324	Move-in Ready / Traditional	10/1/2026
15 th	<u>1525</u>	±982	Move-in Ready	Now
17 th	<u>1700</u>	±18,098	2nd Gen	Now
18 th	<u>1800</u>	±10,421	2nd Gen	Now
19 th	<u>1900***</u>	±18,621	2nd Gen / Full Floor	Now
20 th	<u>2000***</u>	±18,621	Warm Shell / Full Floor	Now
** Floors 17, 18, 19, and 20 are contiguous for 73,989 RSF				
22 nd	<u>2210</u>	±6,197	Penthouse / Move-in Ready / 2nd Gen	Now

SUNSET MEDIA CENTER

6255 Sunset Blvd, Los Angeles, CA 90028 | Suite 110

±4,855 RSF



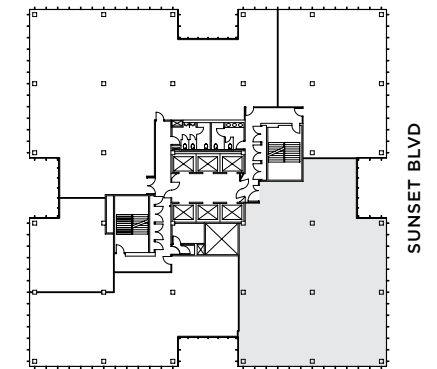
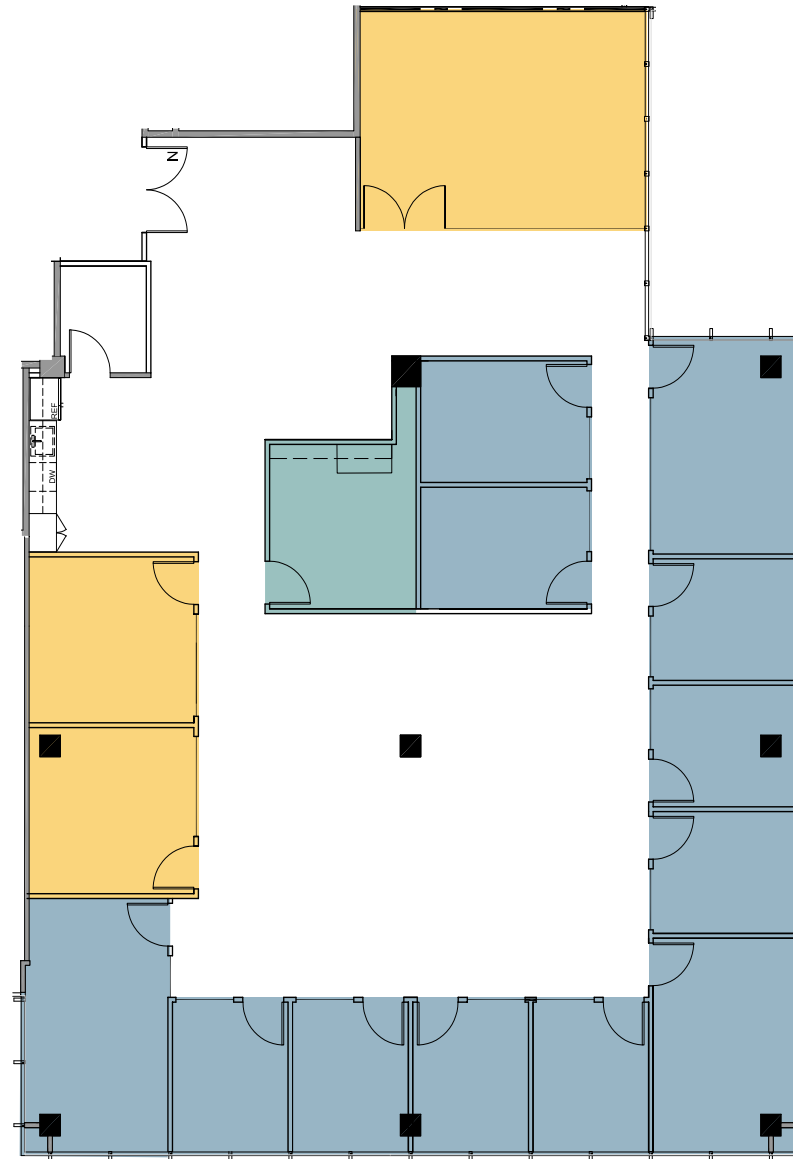
SUNSET BLVD




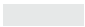
SUNSET MEDIA CENTER

6255 Sunset Blvd, Los Angeles, CA 90028 | Suite 600



±4,906 RSF



-  Private Offices
-  Meeting Rooms
-  Amenity / Break / Collab.
-  Core

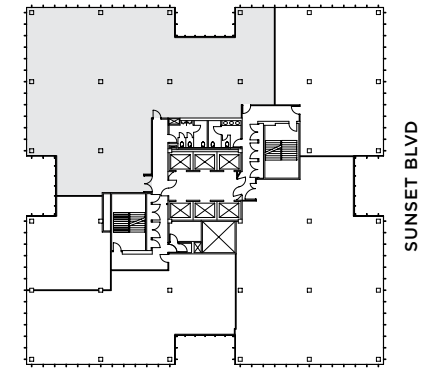
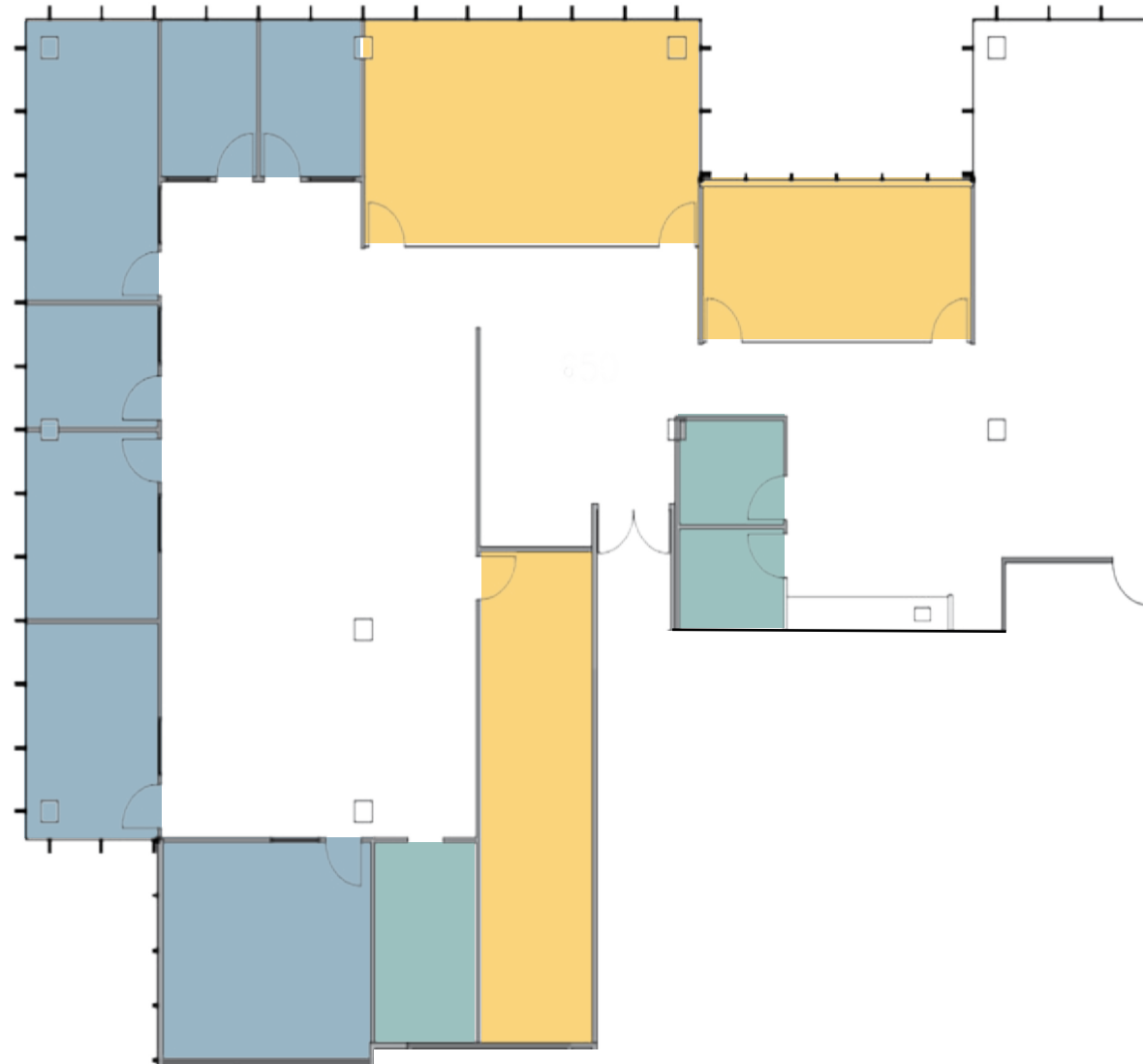
SUNSET MEDIA CENTER




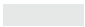
6255 Sunset Blvd, Los Angeles, CA 90028 | Suite 650

±6,156 RSF



North

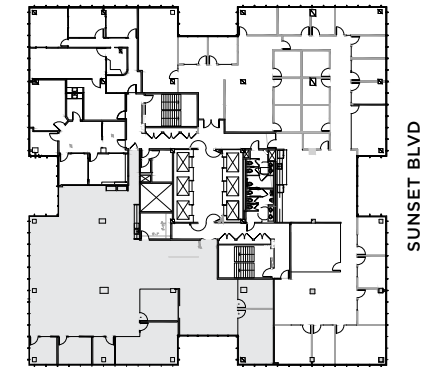
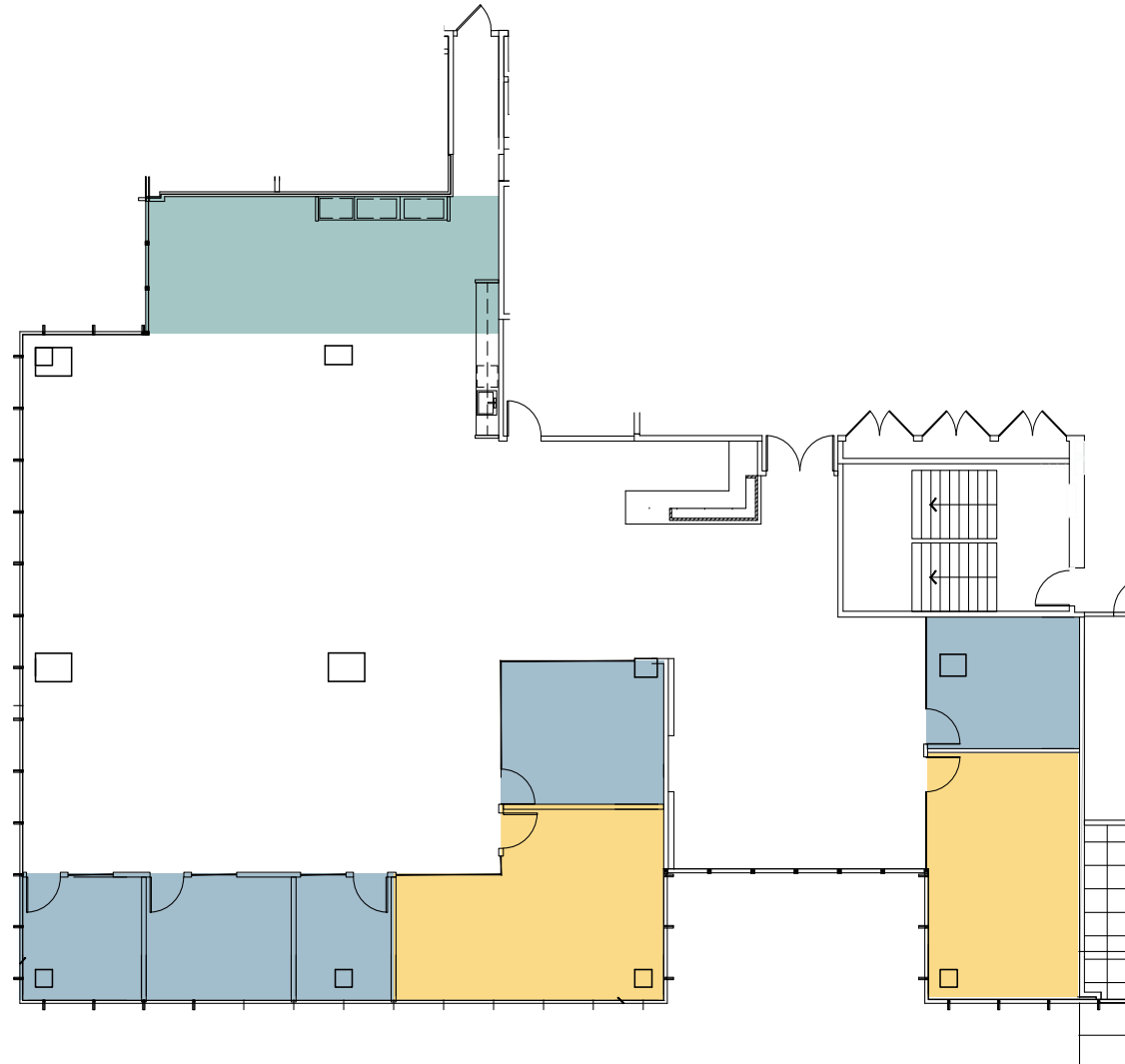
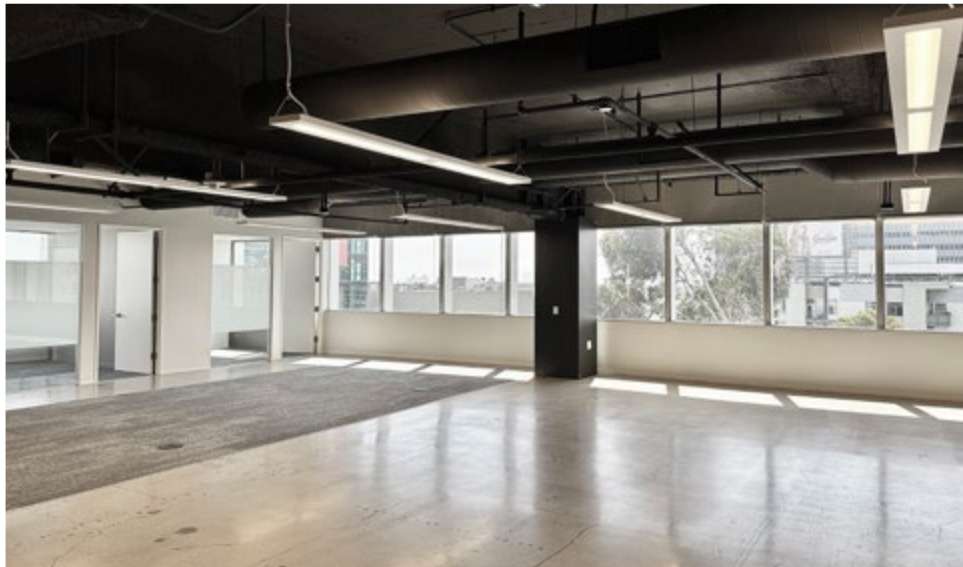
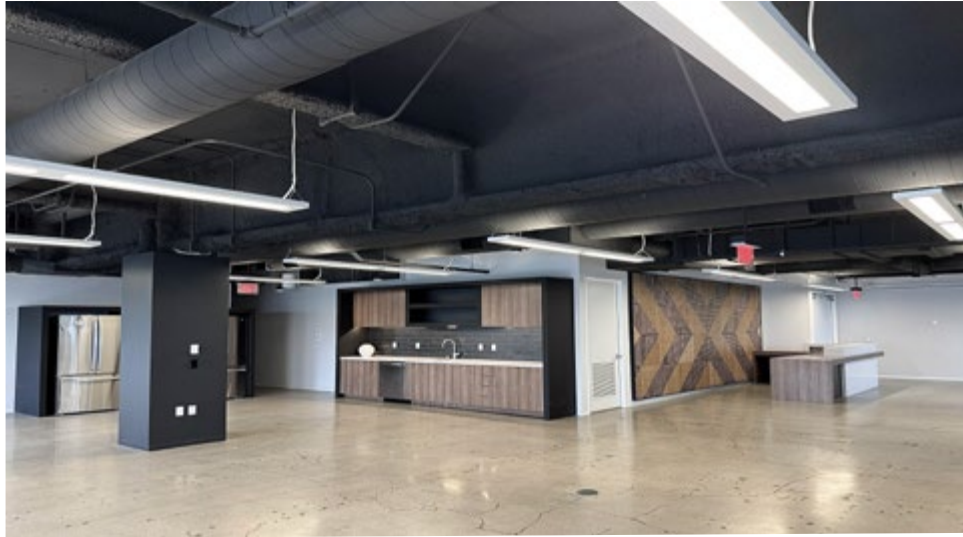


-  Private Offices
-  Meeting Rooms
-  Amenity / Break / Collab.
-  Core

SUNSET MEDIA CENTER

6255 Sunset Blvd, Los Angeles, CA 90028 | Suite 700

±5,980 RSF



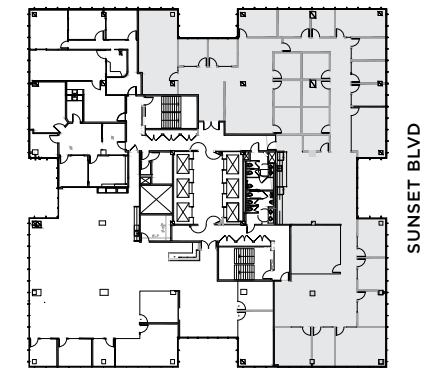
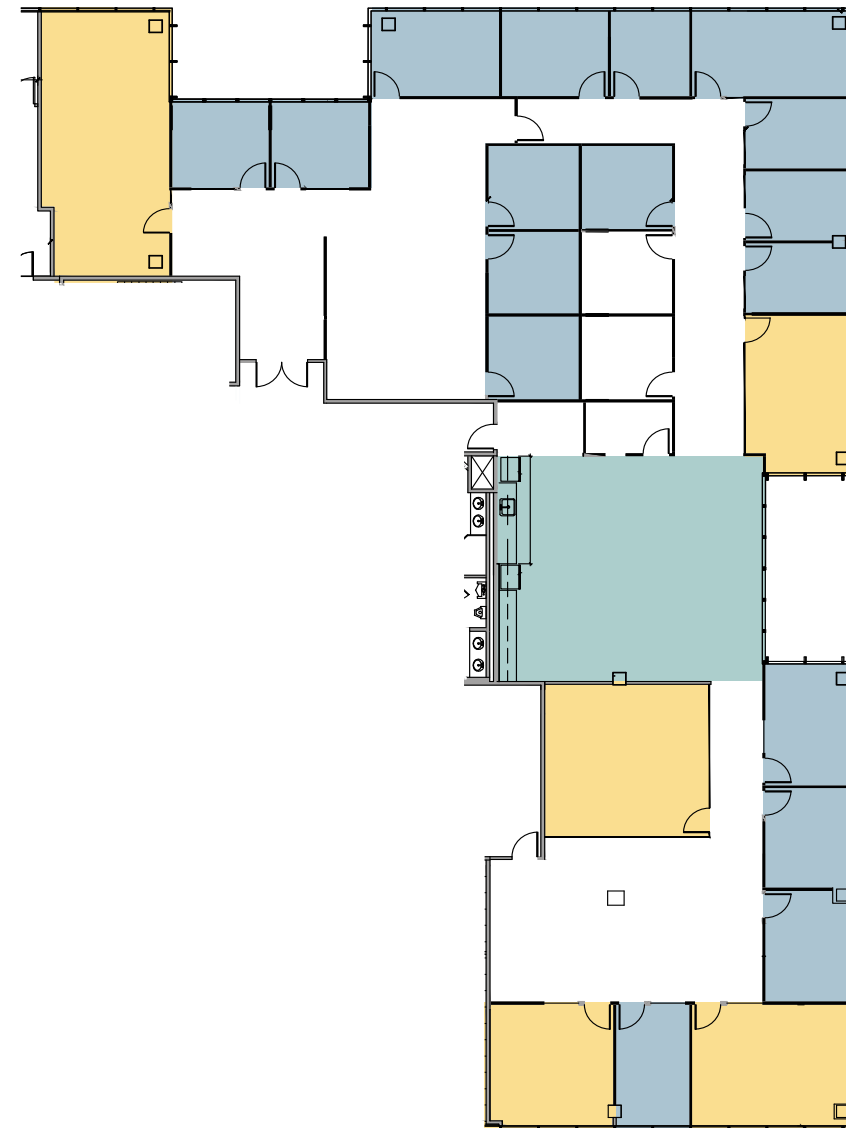
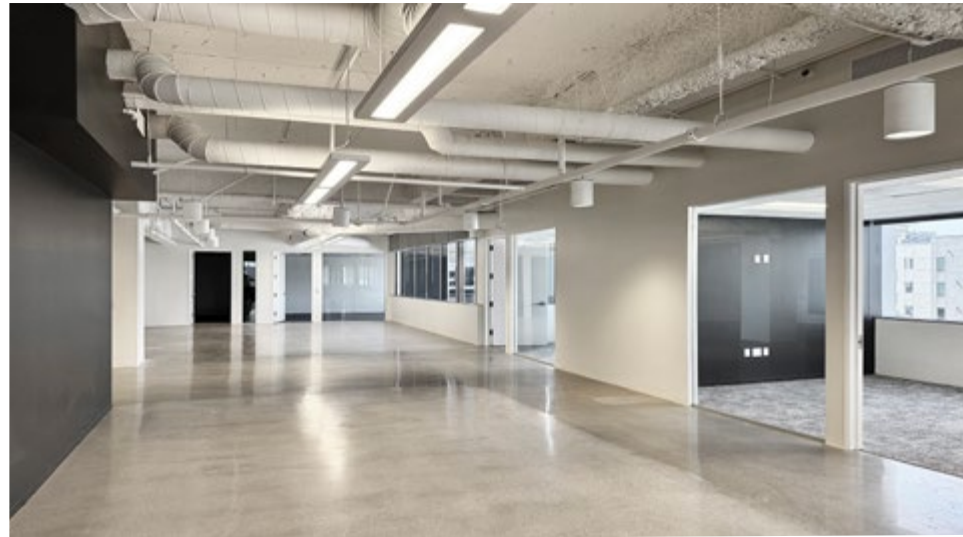
North

- Private Offices
- Meeting Rooms
- Amenity / Break / Collab.
- Core

SUNSET MEDIA CENTER

6255 Sunset Blvd, Los Angeles, CA 90028 | Suite 750

±9,162 RSF

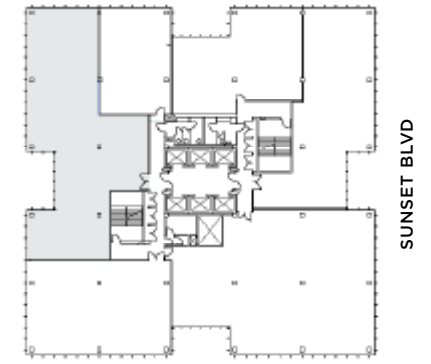
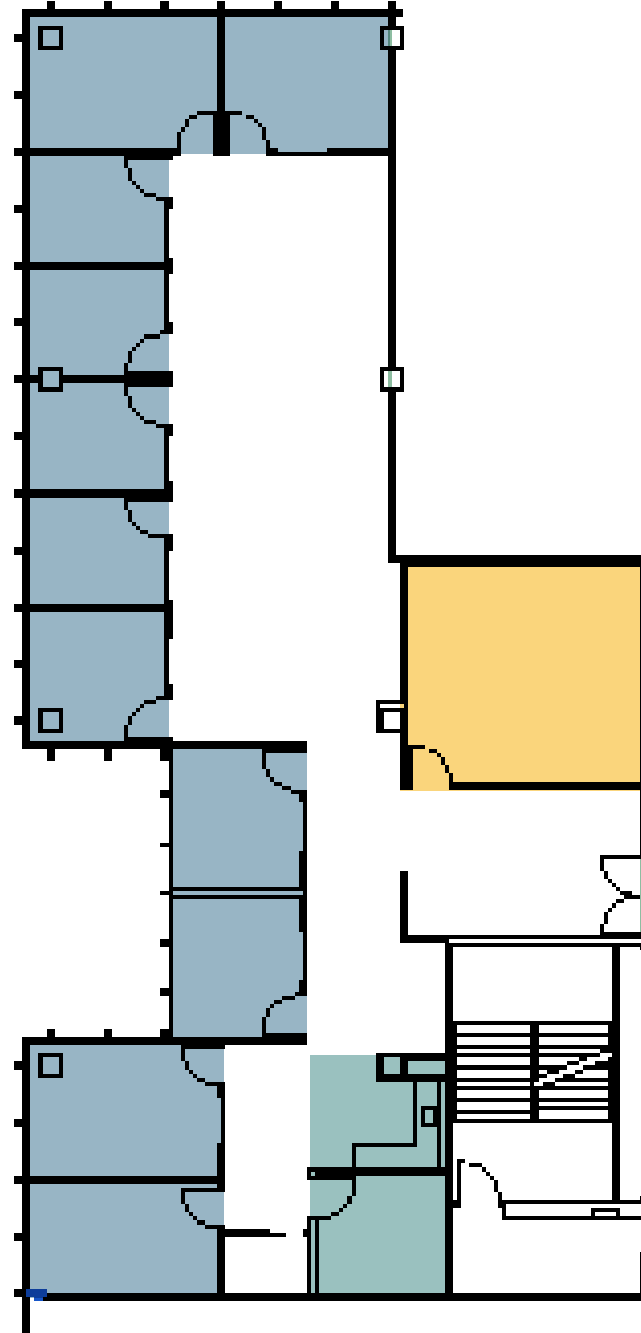





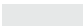
- Private Offices
- Meeting Rooms
- Amenity / Break / Collab.
- Core

SUNSET MEDIA CENTER

6255 Sunset Blvd, Los Angeles, CA 90028 | Suite 800

±4,056 RSF

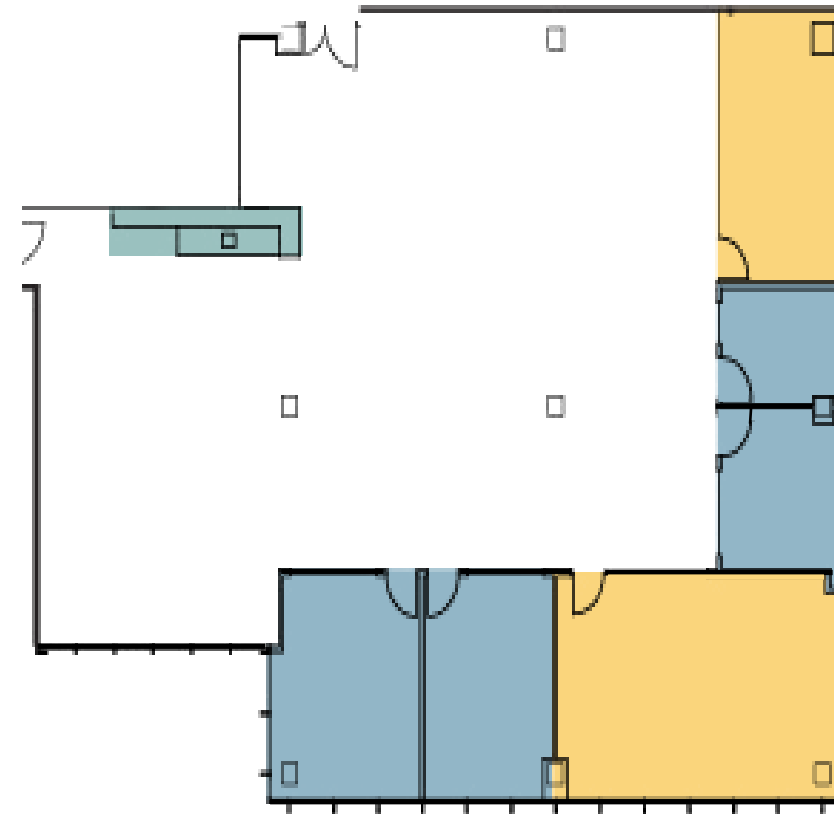


-  Private Offices
-  Meeting Rooms
-  Amenity / Break / Collab.
-  Core

SUNSET MEDIA CENTER

6255 Sunset Blvd, Los Angeles, CA 90028 | Suite 850

±5,002 RSF

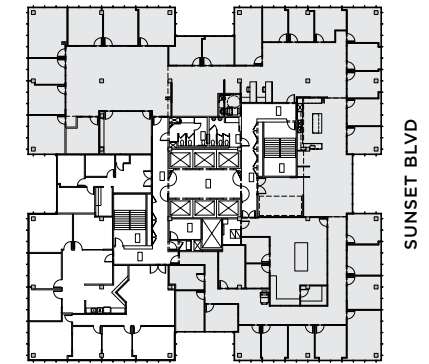
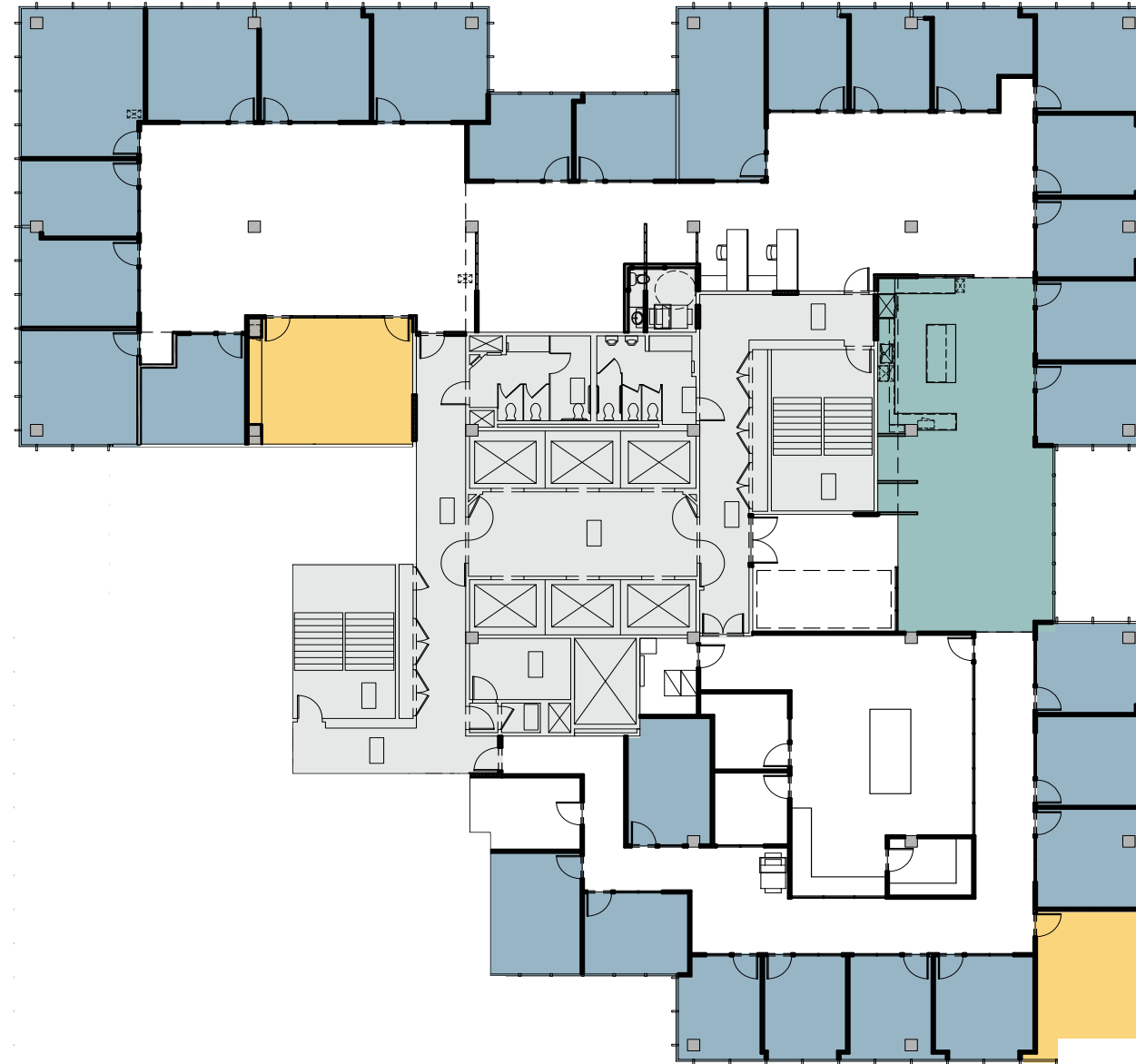





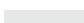
- Private Offices
- Meeting Rooms
- Amenity / Break / Collab.
- Core

SUNSET MEDIA CENTER

6255 Sunset Blvd, Los Angeles, CA 90028 | Suite 900

±14,118 RSF

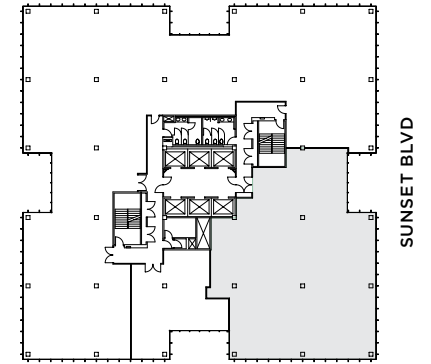
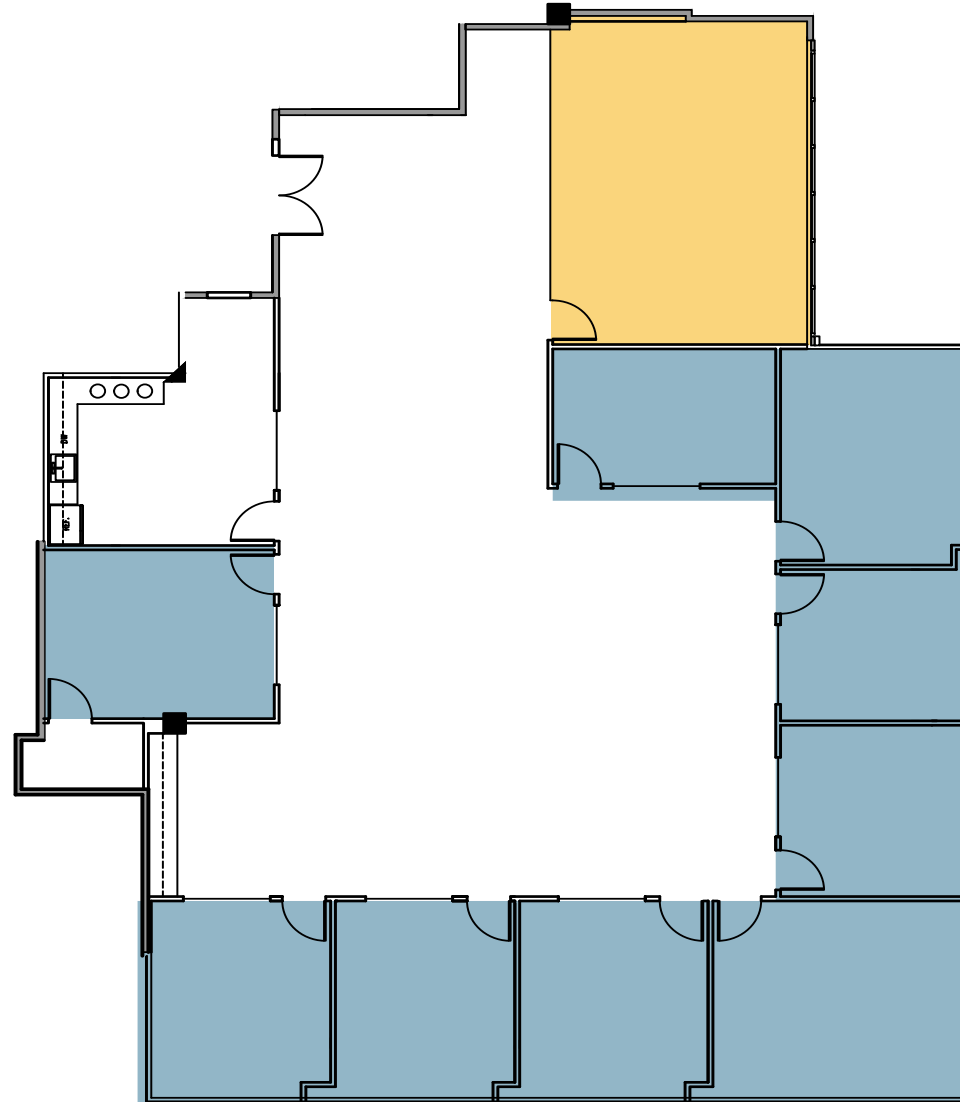
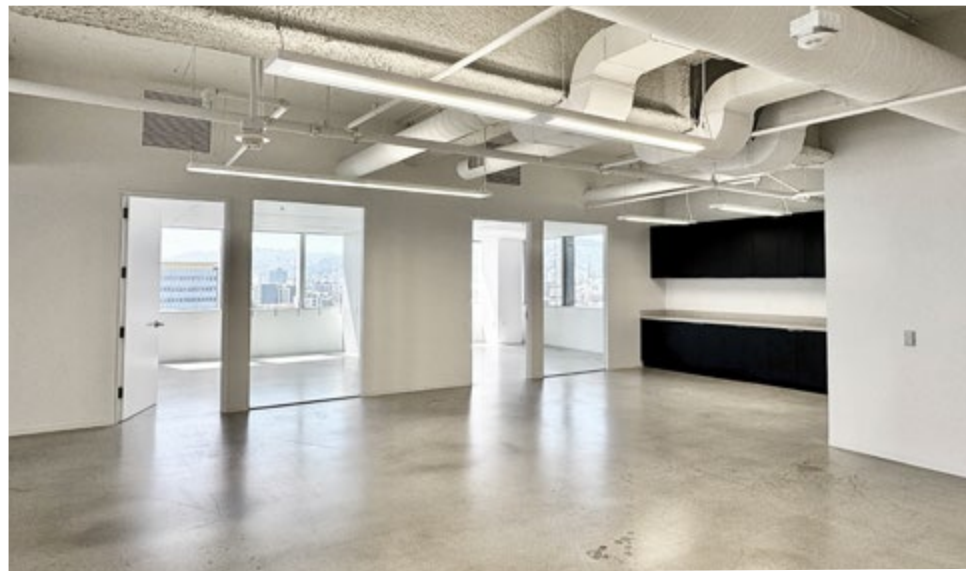
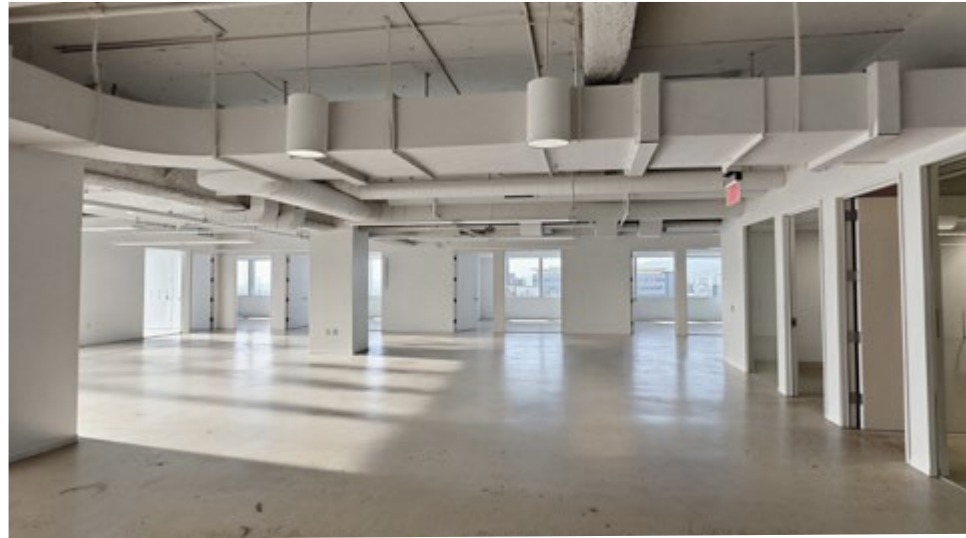





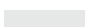
-  Private Offices
-  Meeting Rooms
-  Amenity / Break / Collab.
-  Core

SUNSET MEDIA CENTER

6255 Sunset Blvd, Los Angeles, CA 90028 | Suite 1111

±5,322 RSF

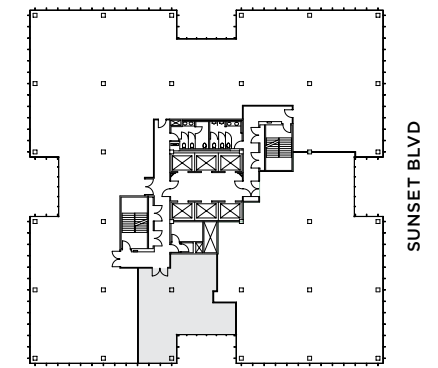
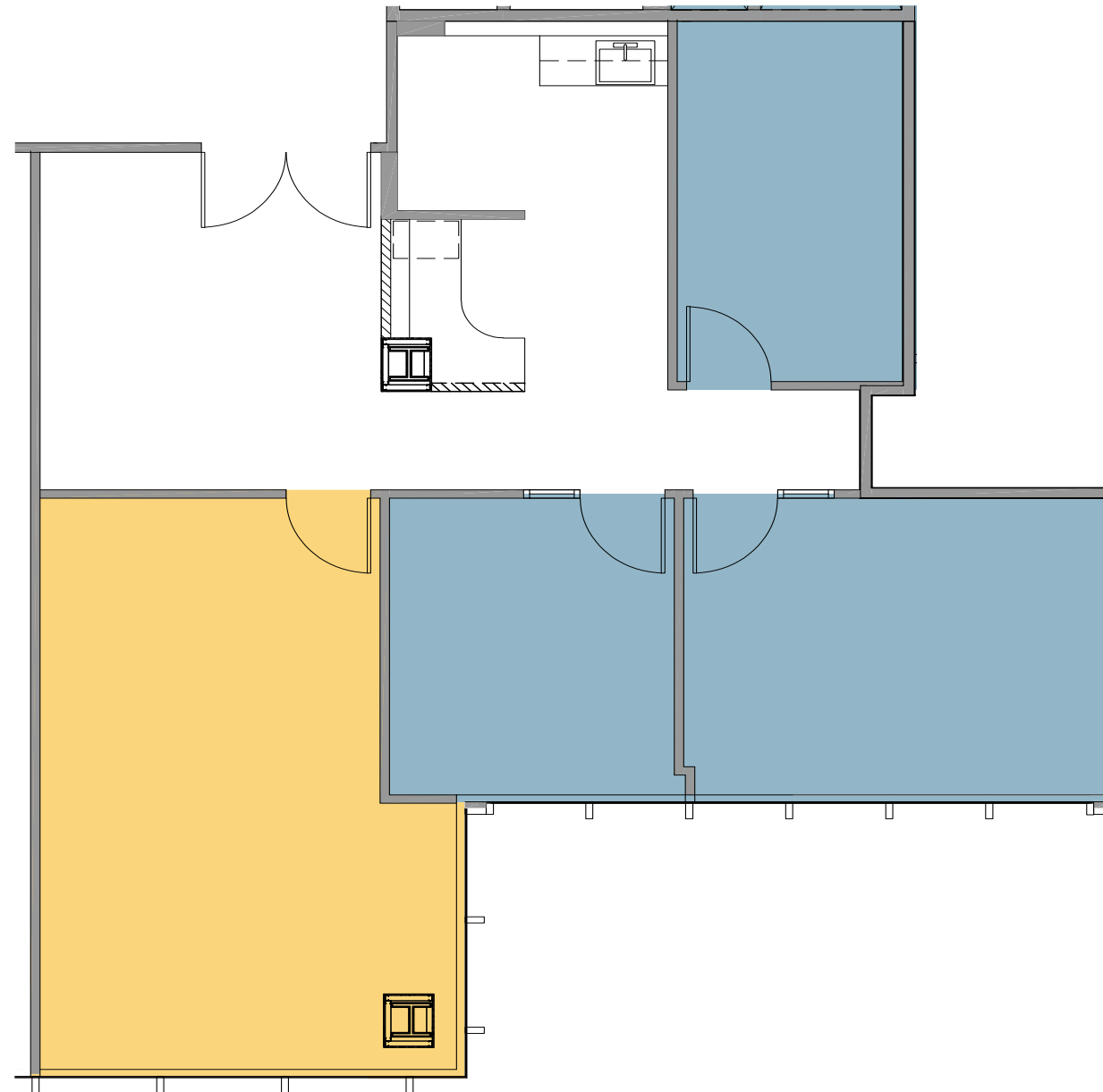





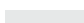
-  Private Offices
-  Meeting Rooms
-  Amenity / Break / Collab.
-  Core

SUNSET MEDIA CENTER

6255 Sunset Blvd, Los Angeles, CA 90028 | Suite 1150

±1,407 RSF

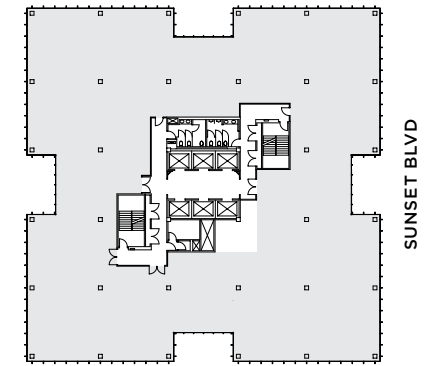
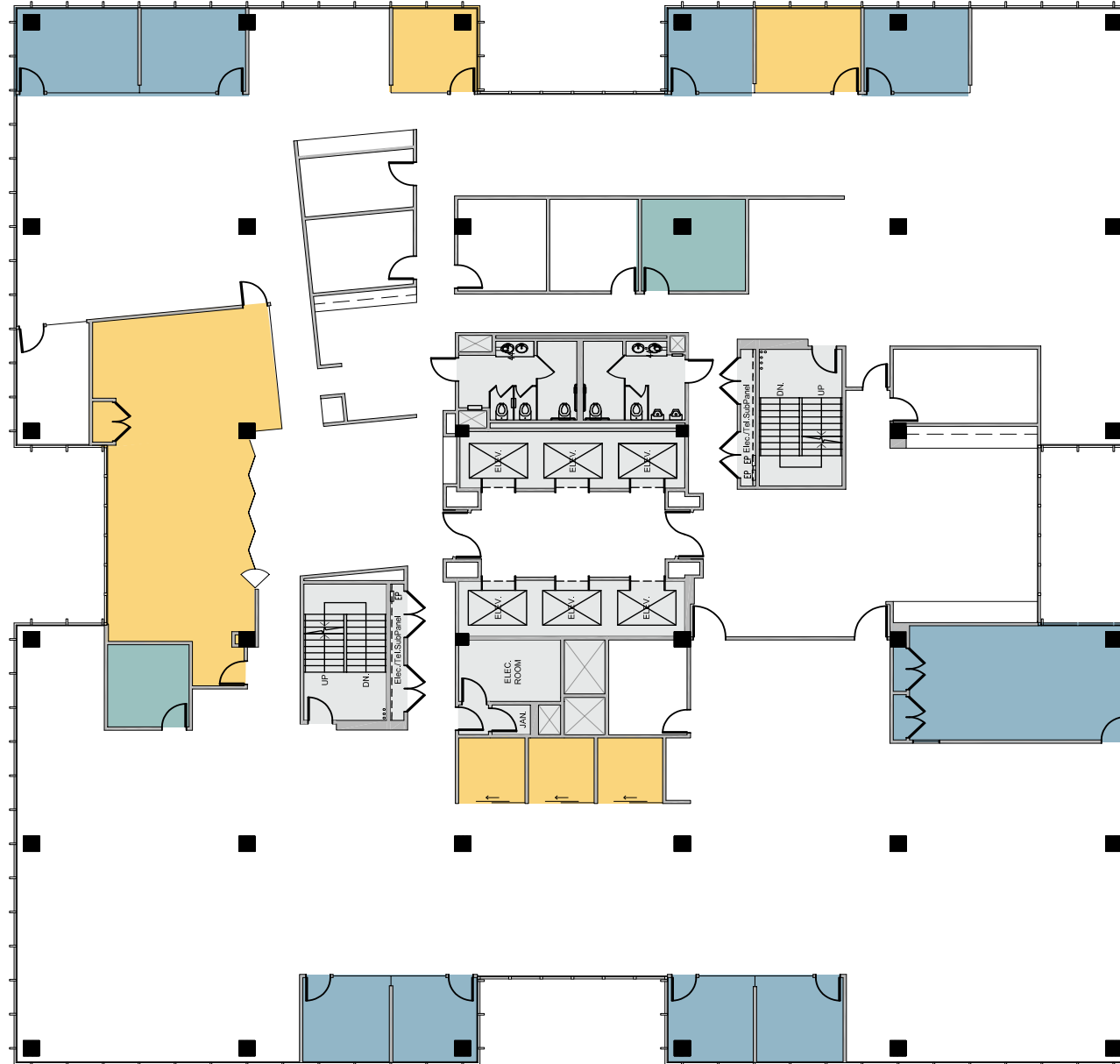


-  Private Offices
-  Meeting Rooms
-  Amenity / Break / Collab.
-  Core




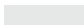
SUNSET MEDIA CENTER

6255 Sunset Blvd, Los Angeles, CA 90028 | Suite 1200

±18,599 RSF



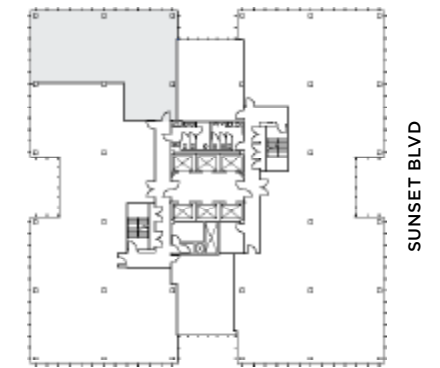
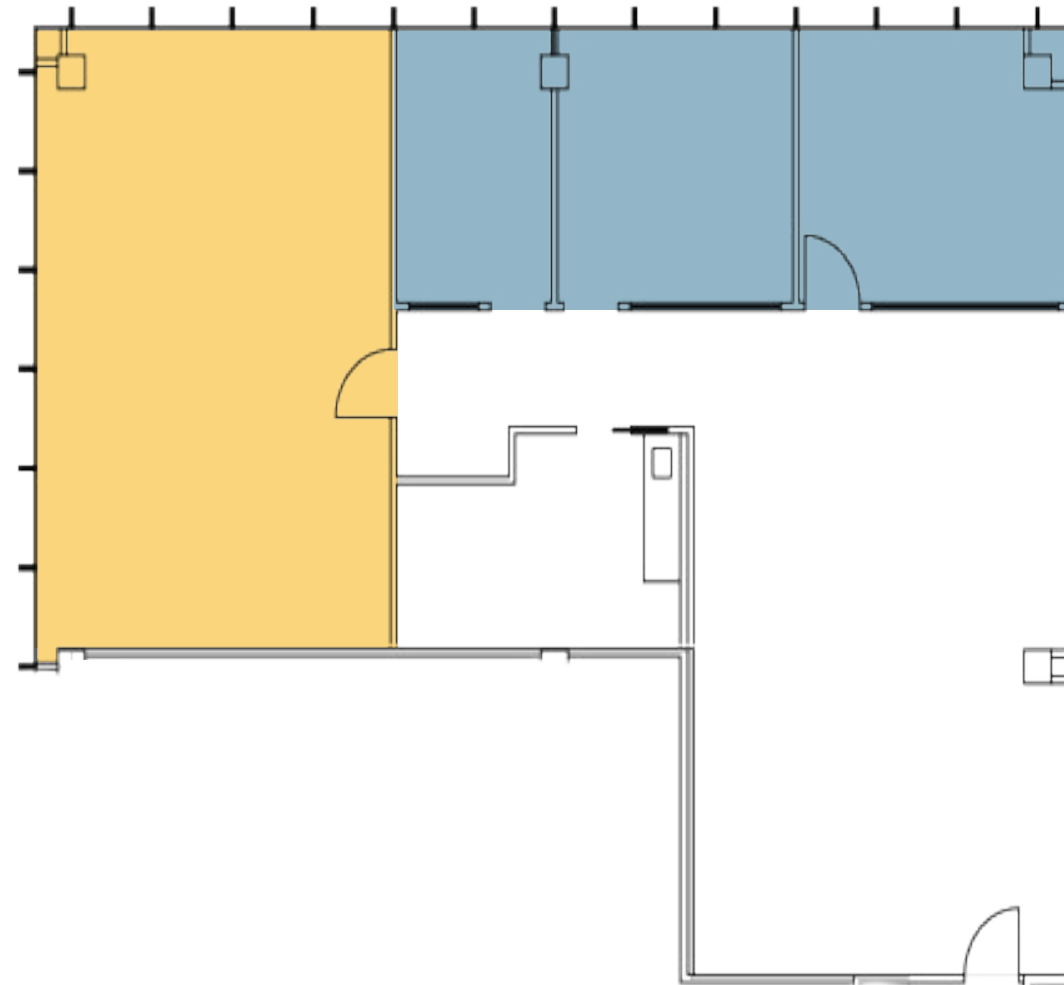
 accordion wall




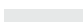
-  Private Offices
-  Meeting Rooms
-  Amenity / Break / Collab.
-  Core

SUNSET MEDIA CENTER

6255 Sunset Blvd, Los Angeles, CA 90028 | Suite 1520

±2,324 RSF

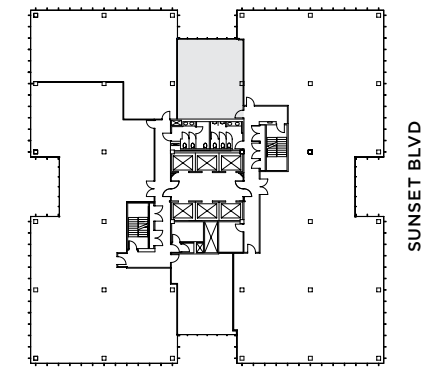
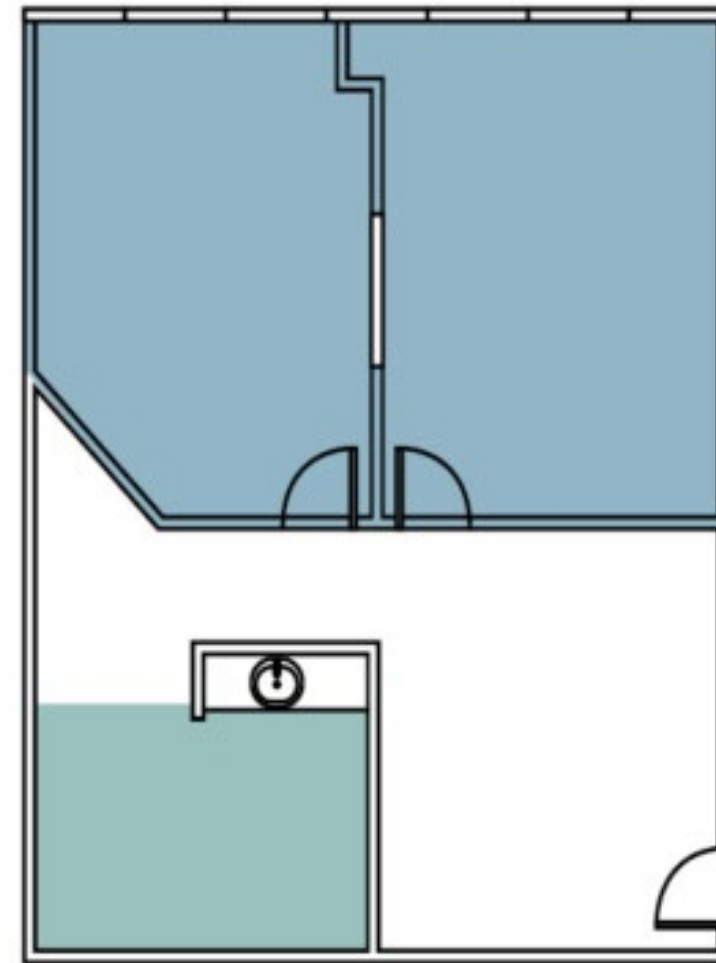


-  Private Offices
-  Meeting Rooms
-  Amenity / Break / Collab.
-  Core

SUNSET MEDIA CENTER

6255 Sunset Blvd, Los Angeles, CA 90028 | Suite 1525

±982 RSF

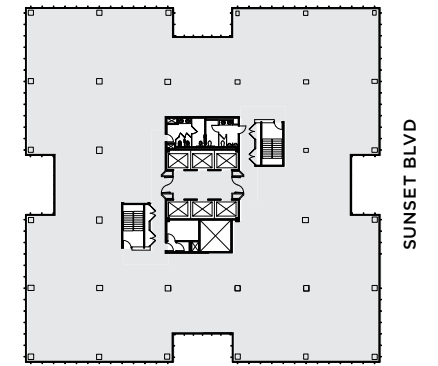





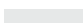
- Private Offices
- Meeting Rooms
- Amenity / Break / Collab.
- Core

SUNSET MEDIA CENTER

6255 Sunset Blvd, Los Angeles, CA 90028 | Suite 1700

±18,098 RSF

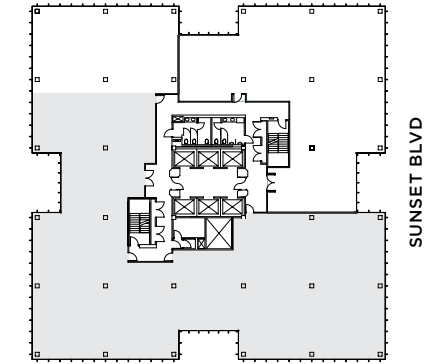


-  Private Offices
-  Meeting Rooms
-  Amenity / Break / Collab.
-  Core

SUNSET MEDIA CENTER

6255 Sunset Blvd, Los Angeles, CA 90028 | Suite 1800

±10,421 RSF

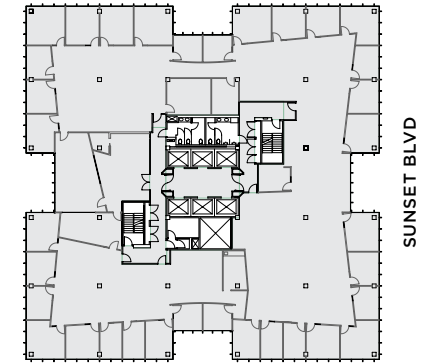
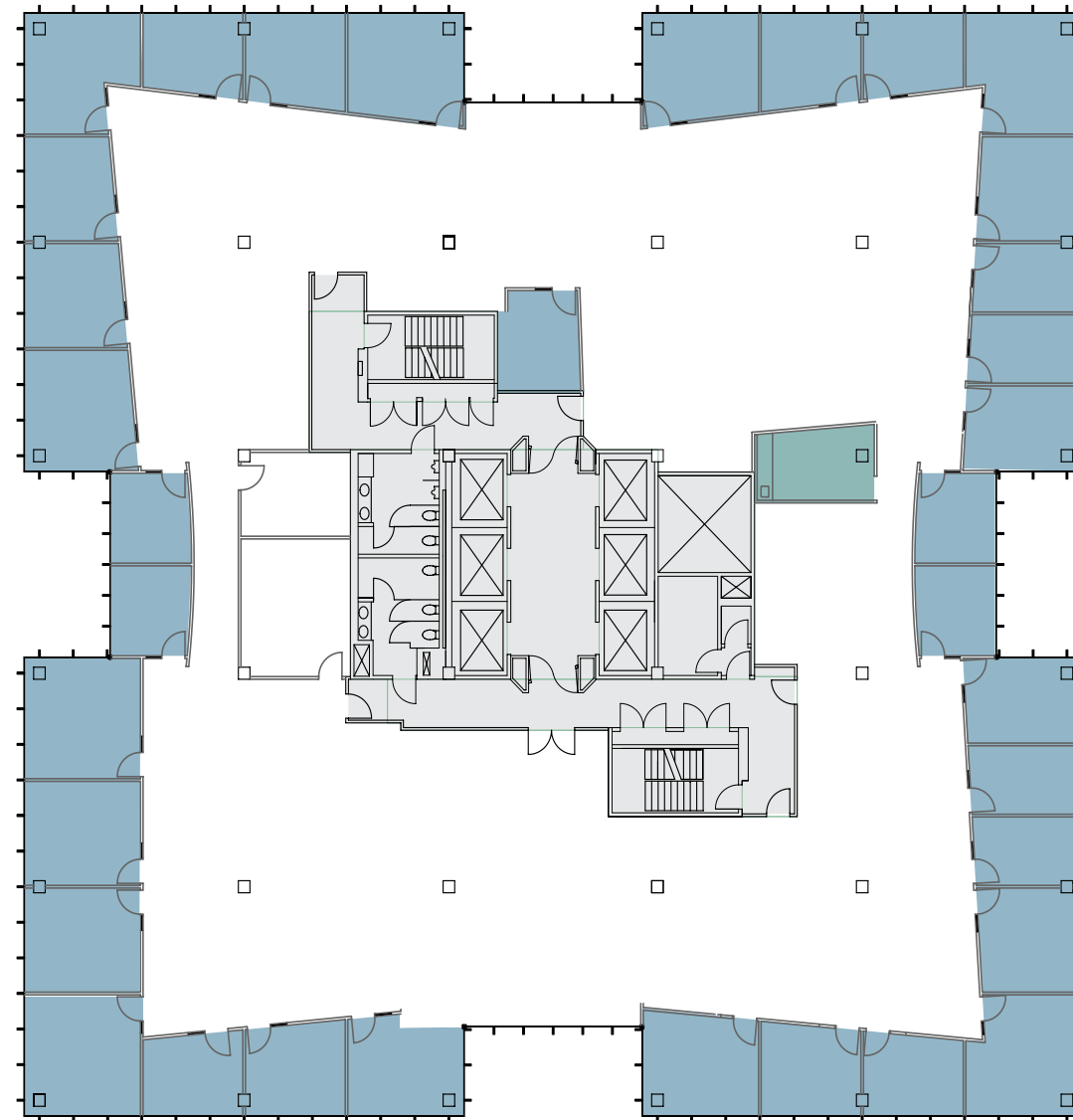


- Private Offices
- Meeting Rooms
- Amenity / Break / Collab.
- Core

SUNSET MEDIA CENTER

6255 Sunset Blvd, Los Angeles, CA 90028 | Suite 1900

±18,621 RSF

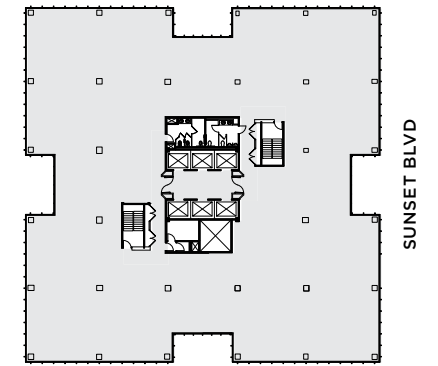
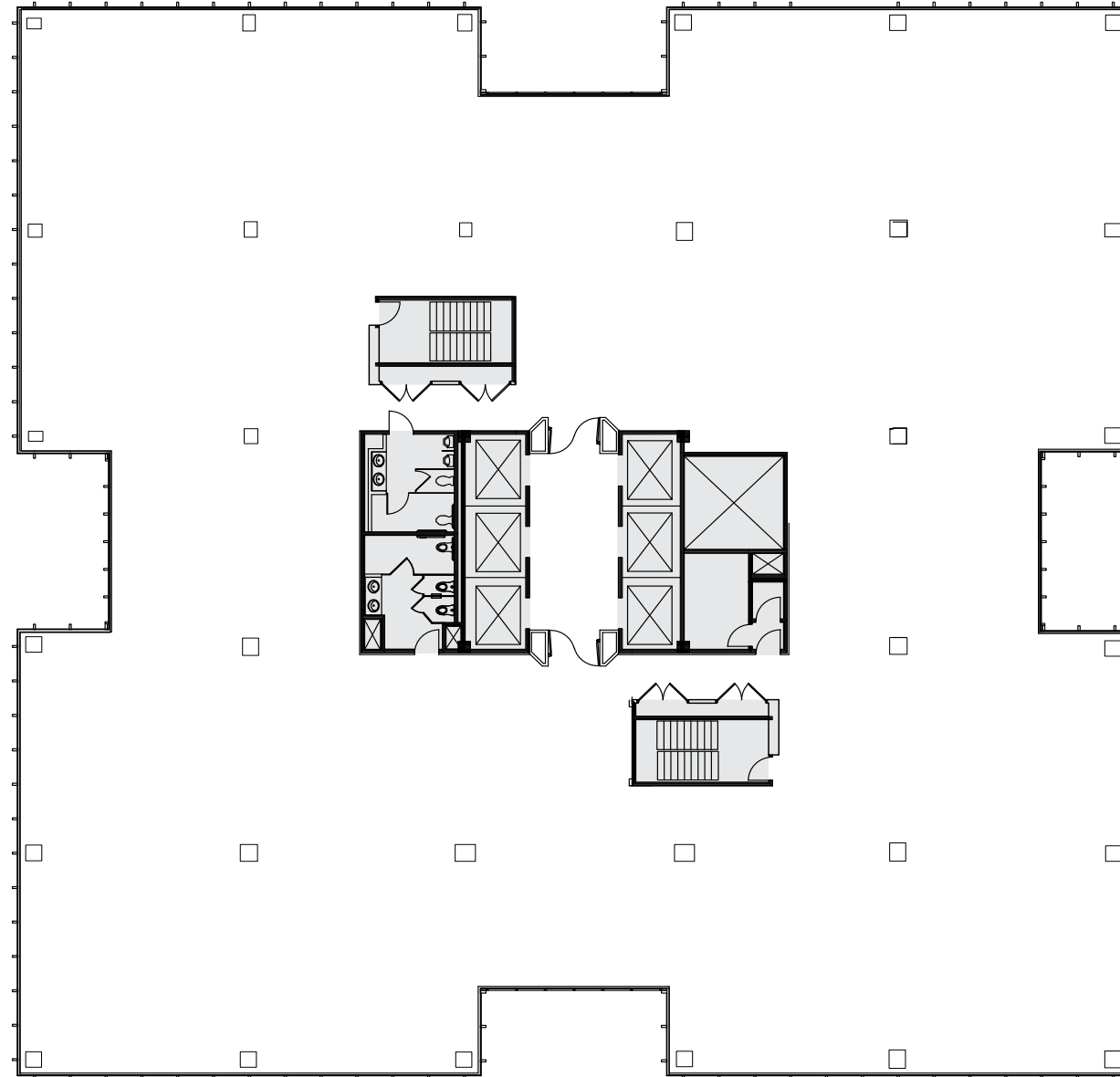


- Private Offices
- Meeting Rooms
- Amenity / Break / Collab.
- Core

SUNSET MEDIA CENTER

6255 Sunset Blvd, Los Angeles, CA 90028 | Suite 2000

±18,621 RSF

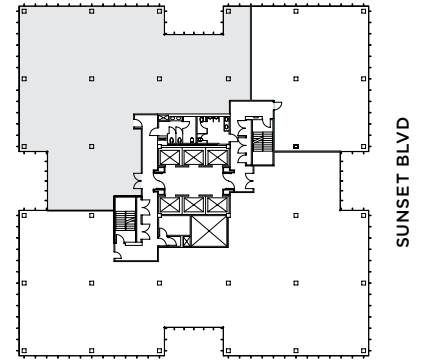
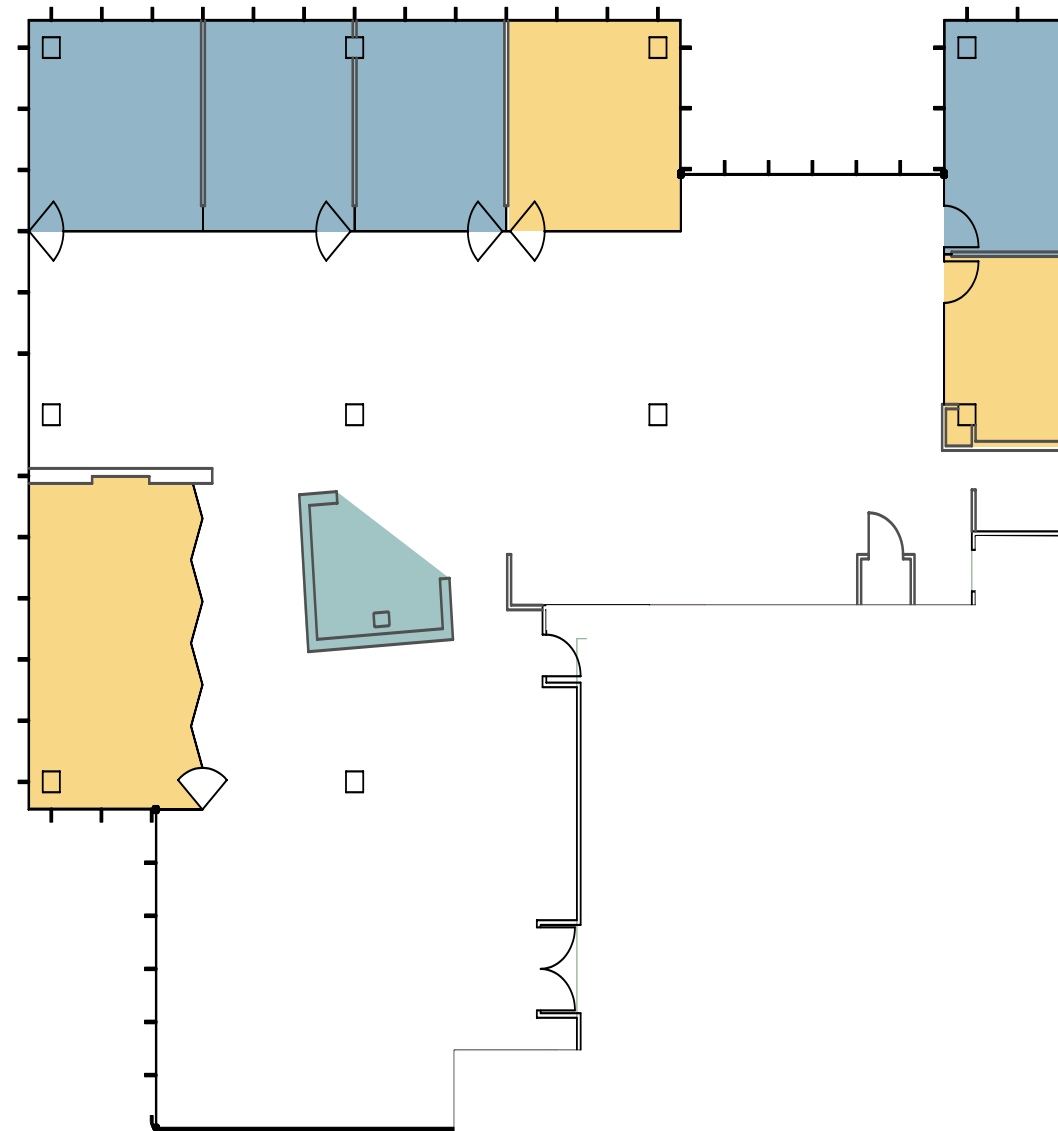


- Private Offices
- Meeting Rooms
- Amenity / Break / Collab.
- Core




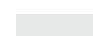
SUNSET MEDIA CENTER

6255 Sunset Blvd, Los Angeles, CA 90028 | Suite 2210

±6,197 RSF



 accordion wall

-  Private Offices
-  Meeting Rooms
-  Amenity / Break / Collab.
-  Core



Peter Hajimihalis

lic. 01994663

+1 213 239 6399

peter.hajimihalis@jll.com

Dana Vargas

lic. 01943620

+1 213 239 6121

dana.vargas@jll.com

Ben Silver

lic. 01818061

+1 310 595 3840

ben.silver@jll.com

Jones Lang LaSalle Brokerage, Inc. License #01856260. 515 South Flower Street, Suite 1300, Los Angeles, CA 90071

Although information has been obtained from sources deemed reliable, neither Owner nor JLL makes any guarantees, warranties or representations, express or implied, as to the completeness or accuracy as to the information contained herein. Any projections, opinions, assumptions or estimates used are for example only. There may be differences between projected and actual results, and those differences may be material. The Property may be withdrawn without notice. Neither Owner nor JLL accepts any liability for any loss or damage suffered by any party resulting from reliance on this information. If the recipient of this information has signed a confidentiality agreement regarding this matter, this information is subject to the terms of that agreement. © 2025 Jones Lang LaSalle IP, Inc. All rights reserved.