

# INDUSTRIAL FOR LEASE | 4,000 SF

118 EAST ORANGETHORPE AVENUE ANAHEIM, CA 92801

COMPETITIVE GROSS LEASE RATE | NO CAMS



## PROPERTY HIGHLIGHTS

- Approximately 4,000 SF Unit Zoned Industrial
- 1,000 SF Office / Showroom Area
- One Ground Level Door (1) 10'x10'
- 200 Amp, 277/480v
- 12' Minimum Clearance
- Excellent Street Visibility / Pole Signage



**MATTHEW ROSSMAN**  
DIRECTOR OF MARKETING  
714.783.2107  
matt@bryanindprop.com  
CA DRE #01794680

**BRYAN INDUSTRIAL PROPERTIES**  
146 E. ORANGETHORPE AVENUE  
ANAHEIM, CA 92801  
BRYANINDPROP.COM  
CA DRE #00002442

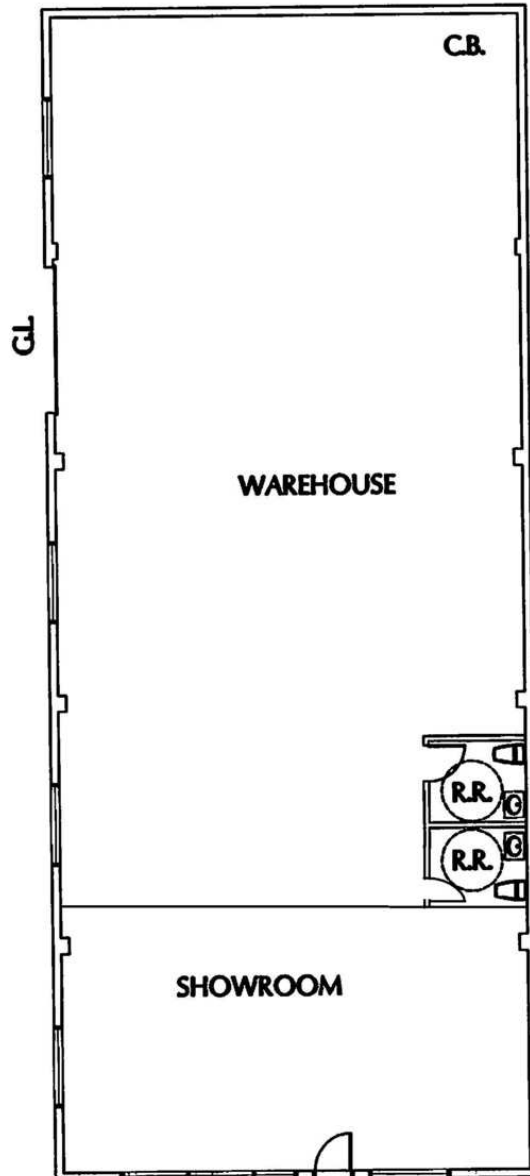


The information contained herein has been obtained from sources we deem reliable. However, no warranties or representations, expressed or implied, are made as to the accuracy of any information contained herein, and the information is subject to errors and omissions. This information is also subject to price, rental or other conditions, withdrawal without notice, and to any special listing conditions by our principals.

# INDUSTRIAL FOR LEASE | 4,000 SF

118 EAST ORANGETHORPE AVENUE ANAHEIM, CA 92801

## FLOOR PLANS



**MATTHEW ROSSMAN**  
DIRECTOR OF MARKETING  
714.783.2107  
matt@bryanindprop.com  
CA DRE #01794680

**BRYAN INDUSTRIAL PROPERTIES**  
146 E. ORANGETHORPE AVENUE  
ANAHEIM, CA 92801  
BRYANINDPROP.COM  
CA DRE #00002442

