

FOR LEASE

\$50

**BROKER GIFT CARDS
FOR ALL TOURS!**

BRIDGEWATER

NEW INDUSTRIAL BUILDING



EXCLUSIVE BROKER

Jordan Zimmer

Vice President, Zimmer Associates



email: jzimmer@zimmer.com

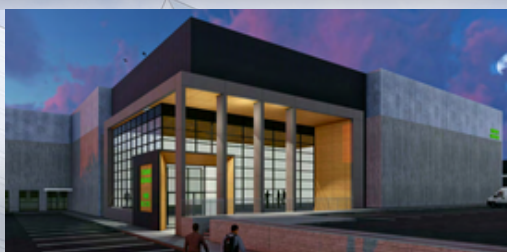
office: 732.661.9200

www.Zimmer.com

📍 1488 ROUTE 22, BRIDGEWATER, NEW JERSEY



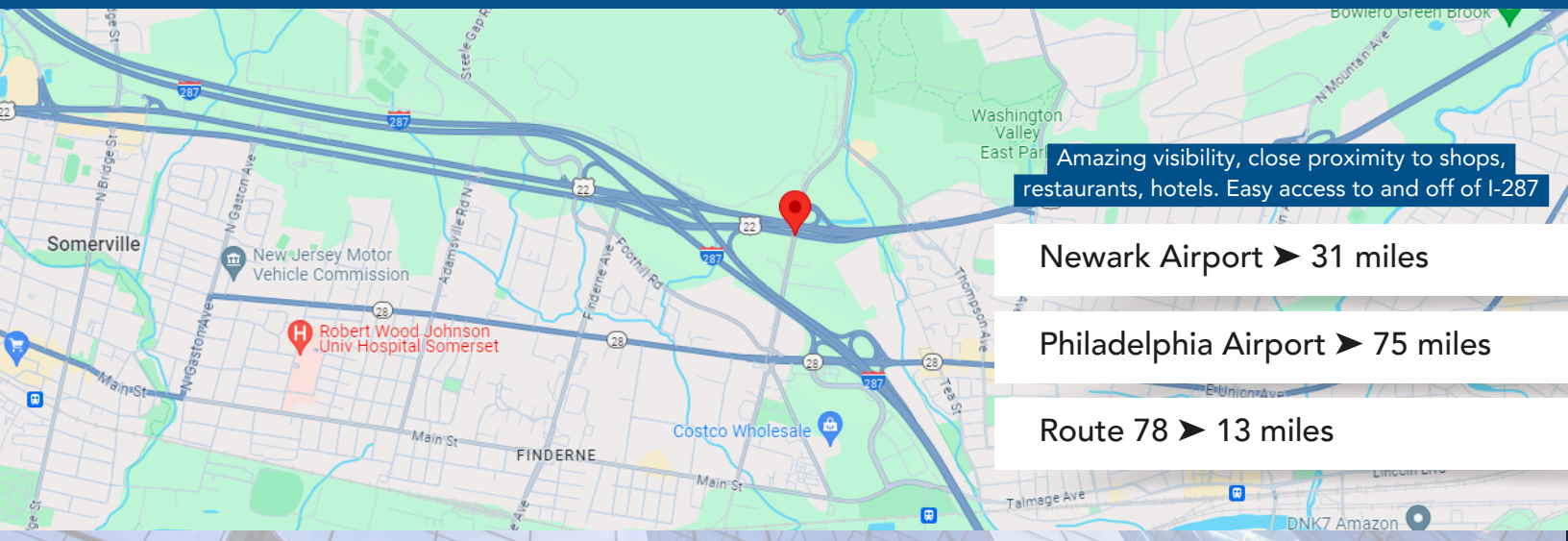
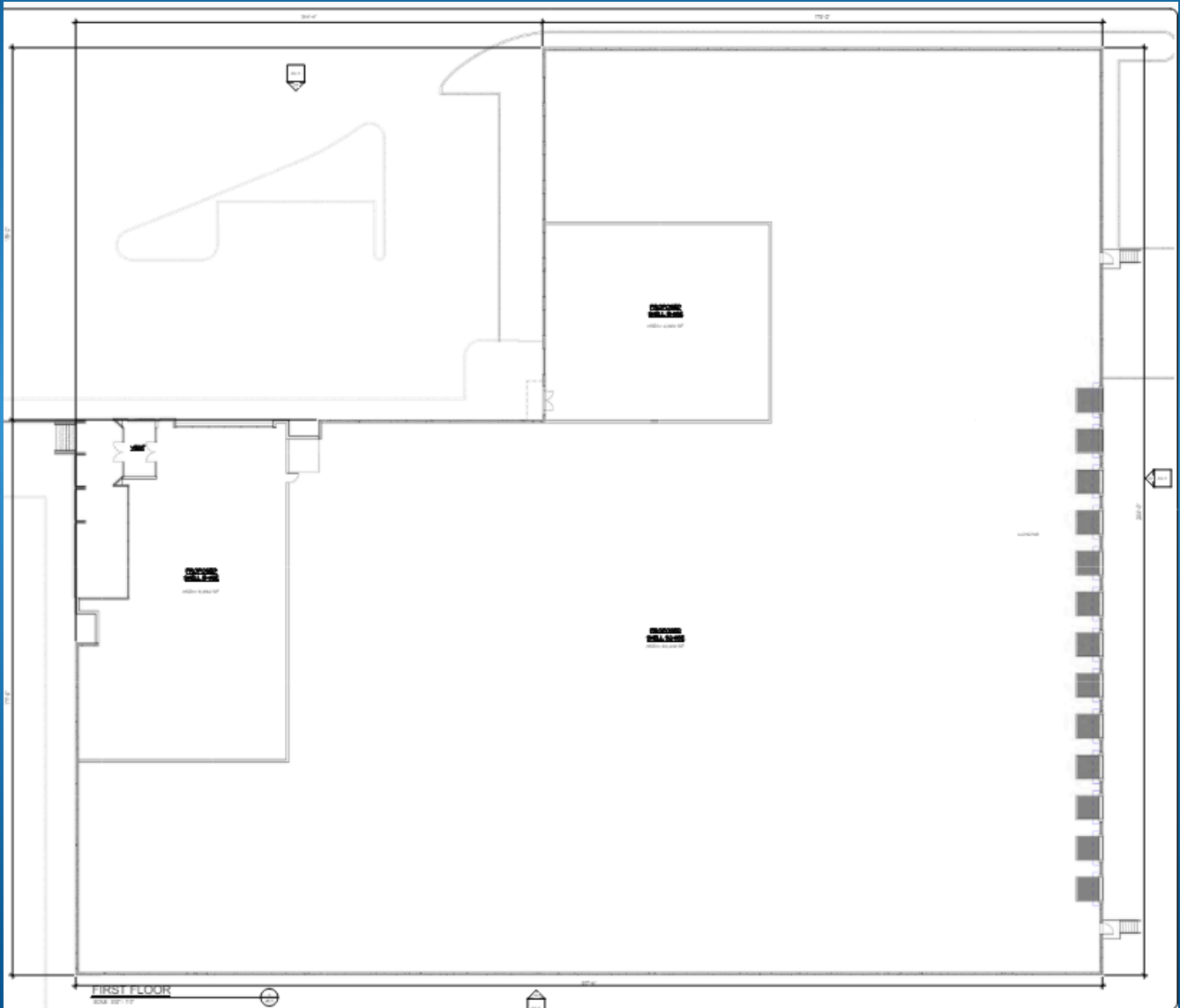
- Availability: Mid 2025
- Building Size: 73,429 SF
- Zoning: M1-C
- Construction Type: Tilt Up



- Ceiling Height: 36'
- Acres: 8 Acres
- LED Lighting



- Column Spacing: 57' x 57'
- Loading: 12 Tailboard, 1 Drive In
- Parking: 150 Spots



Newark Airport > 31 miles

Philadelphia Airport > 75 miles

Route 78 > 13 miles