

FOR SALE



PIPESTONE PROPERTY

COMMERCIAL SITE

Bender
COMMERCIAL



**309 8TH AVENUE SE
PIPESTONE, MN**



1.19 AC



\$375,000

- Commercial property located on the corner of 8th Avenue SE (King of Trails) and 4th Street SE along the main retail corridor of Pipestone, MN.
- Large 1.2 hard corner lot.
- Zoned Commercial.
- Closed convenience store with in-ground tanks.
- Co-listed with Colliers



**MICHAEL BENDER, CCIM, SIOR
BENDER COMMERCIAL**

michael@benderco.com
605-336-7600

**PETER BLOCK
COLLIERS**

peter.block@colliers.com
847-384-2840

**ANGELA SCHURR
COLLIERS**

angela.schurr@colliers.com
847-384-2858



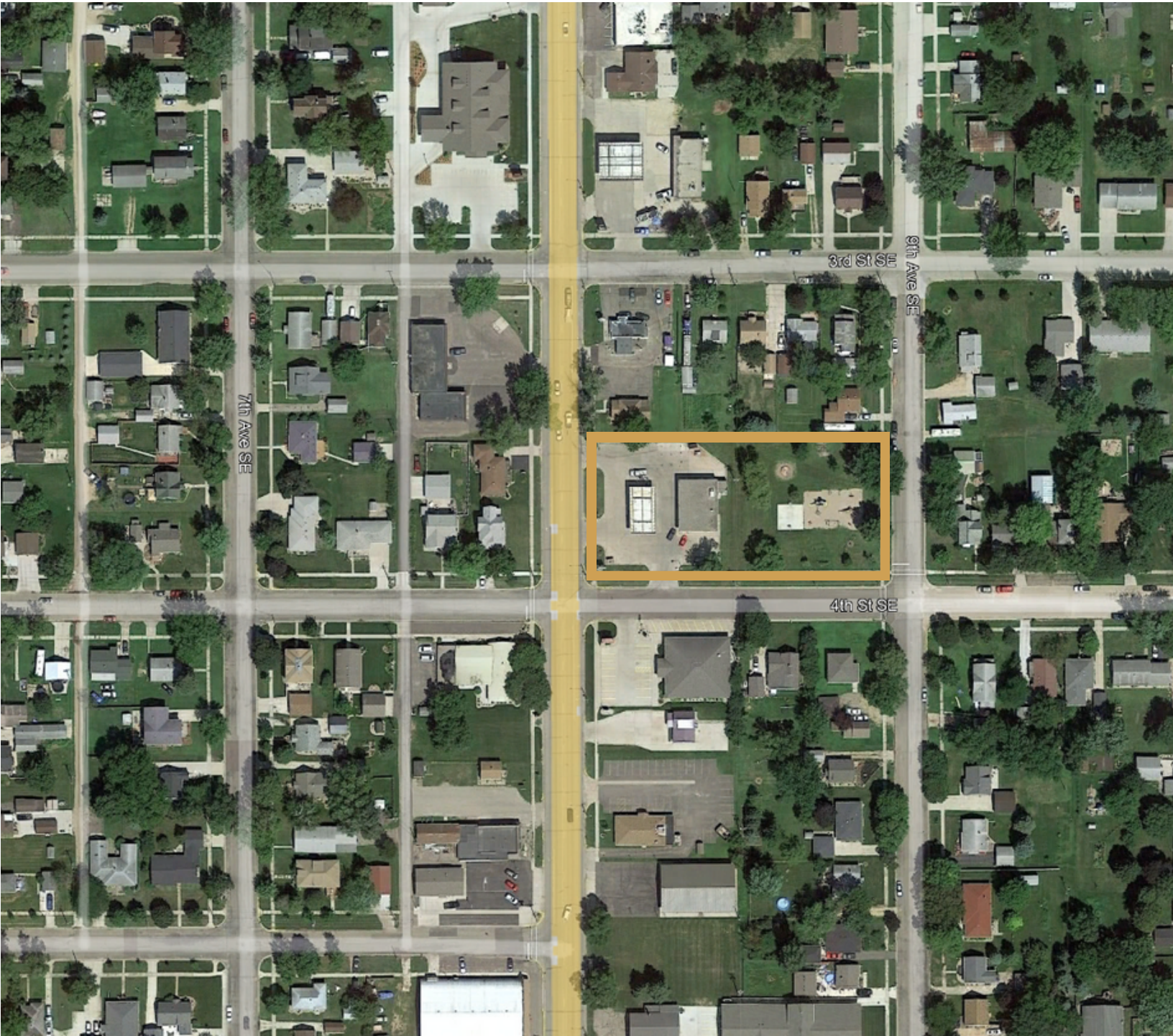
Bender Commercial Real Estate Services | 305 West 57th Street | Sioux Falls, SD 57108 | 605-336-7600 | benderco.com

© 2024 Bender Companies. Information herein deemed reliable, but not guaranteed.

PIPESTONE PROPERTY



COMMERCIAL SITE FOR SALE



PIPESTONE PROPERTY



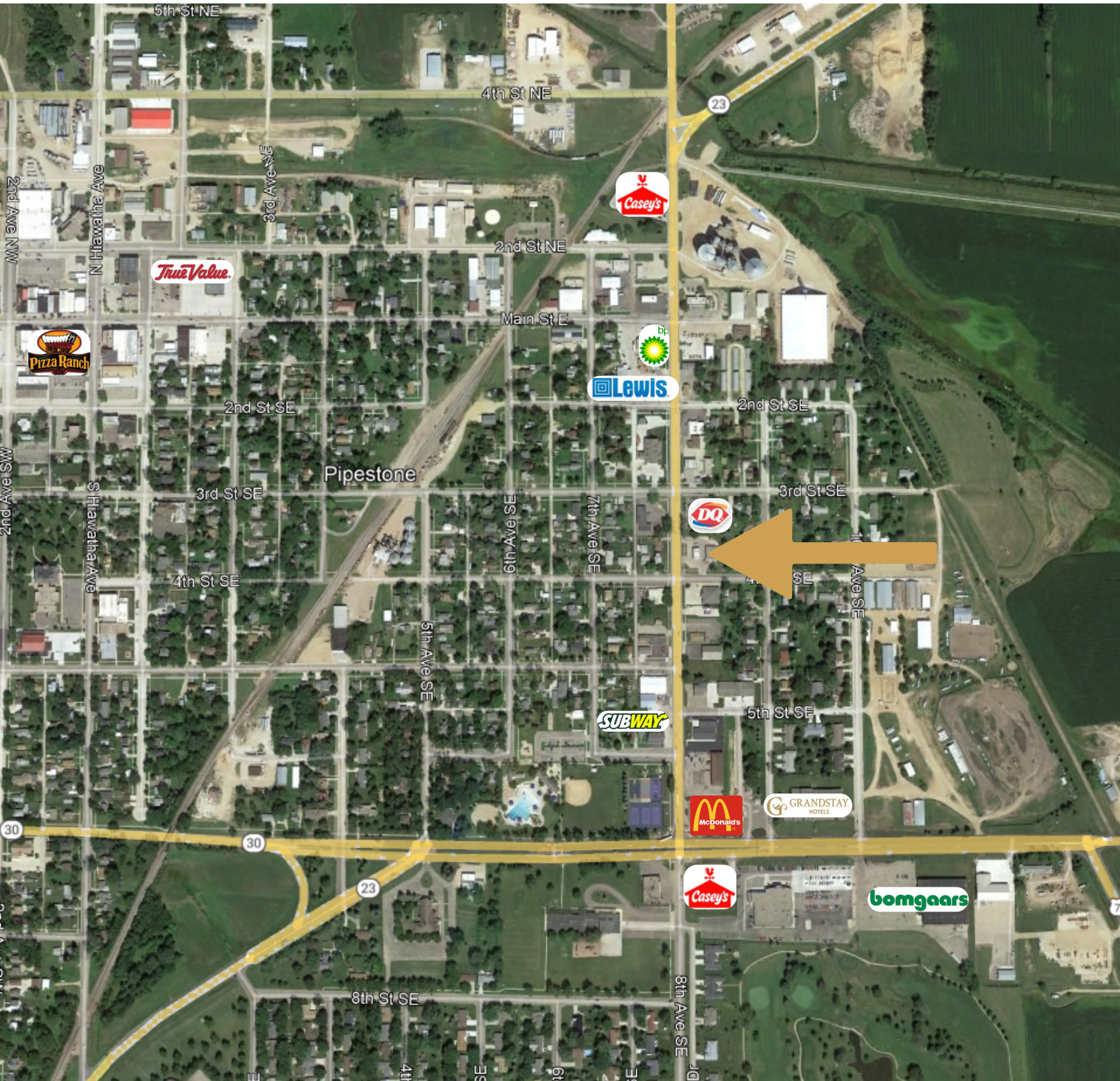
COMMERCIAL SITE FOR SALE



PIPESTONE PROPERTY



COMMERCIAL SITE FOR SALE



PIPESTONE PROPERTY



PIPESTONE DEMOGRAPHICS

Key Facts

KEY FACTS

4,208

Population



2.2

Average Household Size

42.8

Median Age

\$53,425

Median Household Income

EDUCATION

6.3%

No High School Diploma



37.9%

High School Graduate



30.5%

Some College/
Associate's Degree



25.4%

Bachelor's/Grad/
Prof Degree

BUSINESS



305

Total Businesses



4,492

Total Employees

EMPLOYMENT



58.0%

White Collar



31.3%

Blue Collar



10.7%

Services

3.9%

Unemployment Rate

INCOME



\$53,425

Median Household Income



\$34,807

Per Capita Income



\$120,476

Median Net Worth

2023 Households by income (Esri)

The largest group: \$50,000 - \$74,999 (19.4%)

The smallest group: \$150,000 - \$199,999 (2.3%)

Indicator ▲	Value	Diff	
<\$15,000	9.3%	+1.4%	
\$15,000 - \$24,999	11.1%	+2.5%	
\$25,000 - \$34,999	11.9%	+2.3%	
\$35,000 - \$49,999	13.9%	+1.0%	
\$50,000 - \$74,999	19.4%	+0.7%	
\$75,000 - \$99,999	9.4%	-3.3%	
\$100,000 - \$149,999	17.4%	-1.2%	
\$150,000 - \$199,999	2.3%	-2.9%	
\$200,000+	5.3%	-0.5%	

Bars show deviation from Pipestone County