



±13,500 SF INDUSTRIAL / FLEX BUILDING FOR SALE

33 Loop Rd
Arden, NC 28704



LEE & ASSOCIATES
COMMERCIAL REAL ESTATE SERVICES

Joey Schirripa

Associate

jschirripa@lee-associates.com

Andrew Harrill, CCIM

Senior Vice President

aharrill@lee-associates.com

Sale Price:
\$1,995,000

- Great Property For Industrial or Flex Users
- ±1.1 Miles From I-26
- Fully Conditioned Office
- Partially Conditioned Warehouse



DRIVE IN DOORS

(7) 10X10 AND
(1) 16X16



POWER

3 PHASE 480 VOLTS
277 AMPS



LOCATION

+/- 1.5 MILES FROM
ASHEVILLE AIRPORT



**MAJOR INTERSTATE
ACCESS**

±1.1 MILES TO I-26

864.704.1040
LeeGreenville.com

PROPERTY OVERVIEW

PROPERTY NAME	33 Loop Road
TYPE	Industrial/Flex
TOTAL AVAILABLE SF	±13,500 SF
TOTAL BUILDING SF	±13,500 SF
WAREHOUSE SF	±10,000 SF
OFFICE SF	±3,500 SF
TAX MAP #	964388548900000
COUNTY	Buncombe

CITY LIMITS	No
ZONING	EMP
YEAR BUILT	2000
CONSTRUCTION TYPE	Block & Metal
ROOF	Metal
CEILING HEIGHT	±15' Low - ±20' High
DRIVE-IN DOORS	(7) 10x10 (1) 16x16
SPECIAL FEATURES	15.9'w x 31.8'd x 15.95't Paint Booth Included in Price

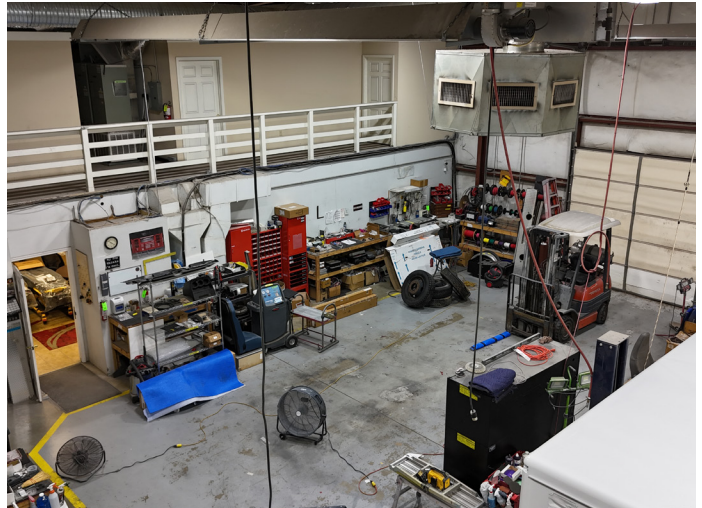


LOCATION OVERVIEW



- 1 Asheville Regional Airport
- 2 Best Buy
- 3 Target
- 4 Fastenal
- 5 United Rentals
- 6 Dick's Sporting Goods
- 7 Wal-Mart
- 8 Lowe's
- 9 Best Buy
- 10 Electrolux

PROPERTY PHOTOS



201 W. McBee Ave, Suite 400, Greenville, SC 29601
320 E. Main Street, Suite 430, Spartanburg, SC 29302
LeeGreenville.com | 864.704.1040





LEARN MORE GIVE US A CALL



LEE & ASSOCIATES
COMMERCIAL REAL ESTATE SERVICES

864.704.1040
LeeGreenville.com

GREENVILLE OFFICE
201 W. McBee Ave, Suite 400
Greenville, SC 29601

SPARTANBURG OFFICE
320 E. Main Street, Suite 430
Spartanburg, SC 29302

All information furnished regarding the properties and information in this packet is from sources deemed reliable, but no warranty or representation is made to the accuracy thereof and same is submitted to errors, omissions, change of price, rental or other conditions prior to sale, lease or financing or withdrawal without notice. No liability of any kind is to be imposed on the broker herein.



Joey Schirripa
Associate
864.569.6951
jschirripa@lee-associates.com



Andrew Harrill, CCIM
Senior Vice President
864.607.7223
aharrill@lee-associates.com