

STR # 35402 / Created June 17, 2024



Monthly STAR Report : Quality Inn & Suites Jackson

For the Month of: May 2024

Currency: US Dollar / Competitive Set Data Excludes Subject Property

Table Of Contents	1
Monthly Performance at a Glance	2
STAR Summary	3
Competitive Set Report	4
Response Report	5
Day of Week & Weekday/Weekend	6
Daily Data for the Month	7
Help	8

Corporate North American Headquarters
T: +1 (615) 824 8664
support@str.com www.str.com

International Headquarters
T: +44 (0) 207 922 1930
hotelinfo@str.com www.str.com

2024 © CoStar Group. This STR Report is a publication of STR, LLC and STR Global, Ltd., CoStar Group companies, and is intended solely for use by paid subscribers. The information in the STR Report is provided on an "as is" and "as available" basis and should not be construed as investment, tax, accounting or legal advice. Reproduction or distribution of this STR Report, in whole or part, without written permission is prohibited and subject to legal action. If you have received this report and are NOT a subscriber to this STR Report, please contact us immediately. Source: 2024 STR, LLC / STR Global, Ltd. trading as "STR".

Tab 2 - Monthly Performance at a Glance - My Property vs. Competitive Set

Quality Inn & Suites Jackson 5723 I-55 Jackson, MS 39206 Phone: (601) 957-8557

STR # 35402 ChainID: MS375 MgtCo: None Owner: None

For the Month of: May 2024 Date Created: June 17, 2024 Monthly Competitive Set Data Excludes Subject Property

May 2024

	Occupancy (%)			ADR			RevPAR		
	My Prop	Comp Set	Index (MPI)	My Prop	Comp Set	Index (ARI)	My Prop	Comp Set	Index (RGI)
Current Month	45.5	51.1	89.2	61.54	72.28	85.1	28.02	36.91	75.9
Year To Date	48.3	49.9	96.8	59.26	67.94	87.2	28.63	33.89	84.5
Running 3 Month	52.0	52.7	98.6	61.13	70.48	86.7	31.78	37.16	85.5
Running 12 Month	42.7	46.2	92.5	60.79	66.93	90.8	25.96	30.89	84.0

May 2024 vs. 2023 Percent Change (%)

	Occupancy			ADR			RevPAR		
	My Prop	Comp Set	Index (MPI)	My Prop	Comp Set	Index (ARI)	My Prop	Comp Set	Index (RGI)
Current Month	11.2	13.0	-1.6	7.0	8.4	-1.2	19.0	22.5	-2.8
Year To Date	18.1	19.5	-1.2	2.6	0.8	1.8	21.2	20.4	0.6
Running 3 Month	26.0	18.3	6.5	4.4	2.3	2.0	31.6	21.1	8.7
Running 12 Month	13.4	17.6	-3.6	3.1	-3.2	6.5	16.9	13.8	2.7

Tab 3 - STAR Summary - My Property vs. Comp Set and Industry Segments

Quality Inn & Suites Jackson 5723 I-55 Jackson, MS 39206 Phone: (601) 957-8557

STR # 35402 ChainID: MS375 MgtCo: None Owner: None

For the Month of: May 2024 Date Created: June 17, 2024 Monthly Competitive Set Data Excludes Subject Property

	Occupancy (%)							
	Current Month	% Chg	Year to Date	% Chg	Running 3 Month	% Chg	Running 12 Month	% Chg
Quality Inn & Suites Jackson	45.5	11.2	48.3	18.1	52.0	26.0	42.7	13.4
Market: Jackson, MS	59.3	4.1	55.6	1.0	58.2	0.7	54.8	0.2
Market Class: Midscale Class	65.2	14.5	59.2	8.7	63.8	12.4	55.4	0.7
Submarket: Jackson I-55 North/Clinton, MS	59.8	5.9	56.6	3.8	59.6	4.0	55.7	3.0
Submarket Scale: Midscale Chains	66.8	8.8	62.8	9.3	66.4	8.5	60.6	7.3
Competitive Set: Competitors	51.1	13.0	49.9	19.5	52.7	18.3	46.2	17.6

	Average Daily Rate							
	Current Month	% Chg	Year to Date	% Chg	Running 3 Month	% Chg	Running 12 Month	% Chg
Quality Inn & Suites Jackson	61.54	7.0	59.26	2.6	61.13	4.4	60.79	3.1
Market: Jackson, MS	101.77	3.2	99.23	4.3	100.18	3.3	98.40	4.1
Market Class: Midscale Class	73.48	6.7	71.16	7.3	72.13	5.4	70.92	4.5
Submarket: Jackson I-55 North/Clinton, MS	102.31	3.7	98.98	3.7	100.21	3.2	98.11	4.0
Submarket Scale: Midscale Chains	99.00	8.8	94.24	9.4	95.85	7.7	91.74	6.2
Competitive Set: Competitors	72.28	8.4	67.94	0.8	70.48	2.3	66.93	-3.2

	RevPAR							
	Current Month	% Chg	Year to Date	% Chg	Running 3 Month	% Chg	Running 12 Month	% Chg
Quality Inn & Suites Jackson	28.02	19.0	28.63	21.2	31.78	31.6	25.96	16.9
Market: Jackson, MS	60.38	7.4	55.17	5.4	58.27	4.0	53.94	4.3
Market Class: Midscale Class	47.90	22.1	42.13	16.7	46.04	18.5	39.30	5.2
Submarket: Jackson I-55 North/Clinton, MS	61.17	9.8	56.06	7.7	59.70	7.3	54.64	7.1
Submarket Scale: Midscale Chains	66.10	18.4	59.18	19.7	63.69	16.9	55.63	14.0
Competitive Set: Competitors	36.91	22.5	33.89	20.4	37.16	21.1	30.89	13.8

	Census/Sample - Properties & Rooms				
	Census		Sample		Sample %
	Properties	Rooms	Properties	Rooms	Rooms
	Market: Jackson, MS	137	11060	102	8948
Market Class: Midscale Class	19	1361	14	1073	78.8
Submarket: Jackson I-55 North/Clinton, MS	62	5296	48	4480	84.6
Submarket Scale: Midscale Chains	18	1499	18	1499	100.0
Competitive Set: Competitors	5	454	5	454	100.0

Supply			
Month % Chg	YTD % Chg	Run 3 Mon % Chg	Run 12 Mon % Chg
0.0	1.3	1.1	0.8
0.1	0.2	0.4	-1.0
0.8	0.8	0.8	0.7
1.4	1.5	1.8	-0.7
-0.7	-5.7	-2.8	-9.4
0.0	0.0	0.0	0.0

Demand			
Month % Chg	YTD % Chg	Run 3 Mon % Chg	Run 12 Mon % Chg
11.2	19.7	27.4	14.3
4.2	1.2	1.1	-0.8
15.4	9.6	13.3	1.4
7.4	5.4	5.9	2.3
8.0	3.1	5.5	-2.8
13.0	19.5	18.3	17.6

Revenue			
Month % Chg	YTD % Chg	Run 3 Mon % Chg	Run 12 Mon % Chg
19.0	22.8	33.0	17.8
7.5	5.6	4.4	3.2
23.1	17.6	19.4	5.9
11.4	9.3	9.3	6.4
17.5	12.9	13.6	3.3
22.5	20.4	21.1	13.8

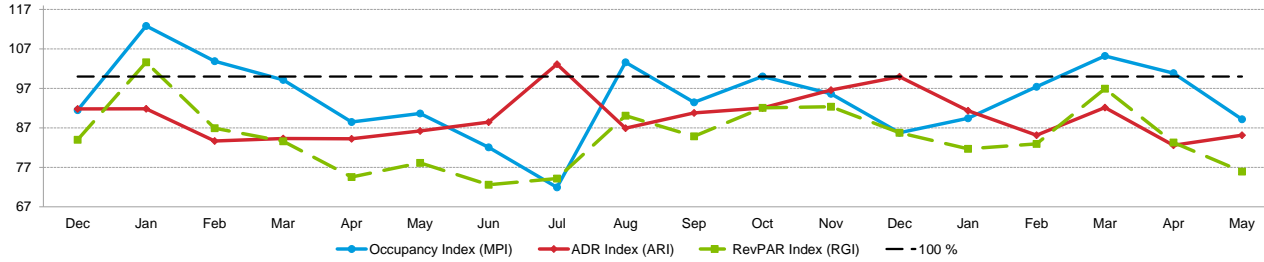
Tab 4 - Competitive Set Report

Quality Inn & Suites Jackson 5723 I-55 Jackson, MS 39206 Phone: (601) 957-8557

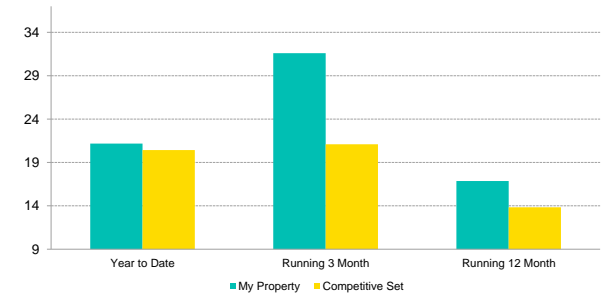
STR # 35402 ChainID: MS375 MgtCo: None Owner: None

For the Month of: May 2024 Date Created: June 17, 2024 Monthly Competitive Set Data Excludes Subject Property

Monthly Indexes



RevPAR Percent Change



Occupancy (%)	2022	2023												2024					Year To Date			Running 3 Month			Running 12 Month		
	Dec	Jan	Feb	Mar	Apr	May	Jun	Jul	Aug	Sep	Oct	Nov	Dec	Jan	Feb	Mar	Apr	May	2022	2023	2024	2022	2023	2024	2022	2023	2024
My Property	32.7	37.2	43.9	41.4	41.5	40.9	42.7	38.5	38.1	35.2	41.1	36.6	38.7	36.9	48.8	59.1	51.3	45.5	36.2	40.9	48.3	42.6	41.3	52.0	39.9	37.7	42.7
Competitive Set	35.7	33.0	42.3	41.7	46.9	45.2	52.0	53.6	36.8	37.7	41.1	38.3	45.1	41.3	50.1	56.2	50.9	51.1	34.5	41.7	49.9	36.9	44.6	52.7	35.3	39.2	46.2
Index (MPI)	91.5	112.8	103.9	99.2	88.5	90.6	82.1	71.9	103.6	93.5	100.0	95.6	85.8	89.4	97.4	105.2	100.9	89.2	104.8	98.0	96.8	115.5	92.6	98.6	113.1	96.0	92.5
Rank	4 of 6	2 of 5	2 of 5	2 of 5	4 of 5	4 of 6	4 of 6	5 of 6	2 of 6	4 of 6	4 of 6	4 of 6	5 of 6	5 of 6	4 of 6	4 of 6	4 of 6	4 of 6	4 of 6	4 of 5	4 of 6	4 of 6	4 of 5	4 of 6	2 of 6	4 of 6	4 of 6

% Chg	2022	2023												2024					Year To Date			Running 3 Month			Running 12 Month		
	Dec	Jan	Feb	Mar	Apr	May	Jun	Jul	Aug	Sep	Oct	Nov	Dec	Jan	Feb	Mar	Apr	May	2022	2023	2024	2022	2023	2024	2022	2023	2024
My Property	-1.7	48.3	60.9	12.7	-10.6	-8.8	-4.1	2.6	-13.8	18.7	20.0	50.9	18.5	-0.7	11.0	42.9	23.8	11.2	-17.4	13.1	18.1	-4.8	-3.2	26.0	-0.4	-5.7	13.4
Competitive Set	26.8	20.1	22.4	7.0	32.7	24.5	14.6	29.9	0.0	33.7	5.5	6.3	26.4	25.3	18.4	34.7	8.6	13.0	-4.9	21.0	19.5	-4.4	20.8	18.3	-3.3	11.1	17.6
Index (MPI)	-22.5	23.5	31.4	5.4	-32.7	-26.7	-16.4	-21.0	-13.8	-11.2	13.7	41.9	-6.2	-20.7	-6.2	6.1	14.0	-1.6	-13.1	-6.5	-1.2	-0.5	-19.9	6.5	3.0	-15.1	-3.6
Rank	4 of 6	2 of 5	2 of 5	2 of 5	3 of 5	5 of 6	5 of 6	5 of 6	5 of 6	3 of 6	1 of 6	1 of 6	4 of 6	5 of 5	4 of 5	3 of 5	2 of 5	4 of 6	4 of 6	2 of 5	4 of 5	3 of 6	3 of 5	2 of 5	3 of 6	4 of 6	5 of 6

ADR	2022	2023												2024					Year To Date			Running 3 Month			Running 12 Month		
	Dec	Jan	Feb	Mar	Apr	May	Jun	Jul	Aug	Sep	Oct	Nov	Dec	Jan	Feb	Mar	Apr	May	2022	2023	2024	2022	2023	2024	2022	2023	2024
My Property	61.46	57.21	55.84	60.32	57.79	57.49	64.28	62.44	57.83	60.69	68.35	62.48	58.19	54.81	56.54	62.41	59.24	61.54	62.12	57.75	59.26	61.65	58.55	61.13	64.59	58.97	60.79
Competitive Set	66.96	62.30	66.72	71.55	68.60	66.69	72.66	60.55	66.53	66.86	74.24	64.70	58.21	59.99	66.41	67.74	71.73	72.28	62.11	67.41	67.94	67.08	68.88	70.48	62.66	69.15	66.93
Index (ARI)	91.8	91.8	83.7	84.3	84.2	86.2	88.5	103.1	86.9	90.8	92.1	96.6	100.0	91.4	85.1	92.1	82.6	85.1	100.0	85.7	87.2	91.9	85.0	86.7	103.1	85.3	90.8
Rank	4 of 6	5 of 5	5 of 5	4 of 5	3 of 5	5 of 6	4 of 6	2 of 6	5 of 6	4 of 6	4 of 6	3 of 6	3 of 6	3 of 6	3 of 6	3 of 6	3 of 6	3 of 6	3 of 6	4 of 5	3 of 6	4 of 6	3 of 5	3 of 6	3 of 6	5 of 6	3 of 6

% Chg	2022	2023												2024					Year To Date			Running 3 Month			Running 12 Month		
	Dec	Jan	Feb	Mar	Apr	May	Jun	Jul	Aug	Sep	Oct	Nov	Dec	Jan	Feb	Mar	Apr	May	2022	2023	2024	2022	2023	2024	2022	2023	2024
My Property	-9.0	-6.2	-14.9	-4.0	-6.8	-4.8	5.5	5.2	1.1	5.5	6.9	5.3	-5.3	-4.2	1.3	3.5	2.5	7.0	7.4	-7.0	2.6	1.5	-5.0	4.4	13.8	-8.7	3.1
Competitive Set	15.8	20.5	24.1	26.9	-7.0	-7.8	-2.3	-10.5	2.1	-10.3	-6.5	-0.9	-13.1	-3.7	-0.5	-5.3	4.6	8.4	6.9	8.5	0.8	13.5	2.7	2.3	5.2	10.4	-3.2
Index (ARI)	-21.4	-22.1	-31.4	-24.3	0.2	3.3	7.9	17.5	-0.9	17.6	14.3	6.2	8.9	-0.5	1.8	9.3	-2.0	-1.2	0.5	-14.3	1.8	-10.6	-7.5	2.0	8.2	-17.3	6.5
Rank	6 of 6	5 of 5	5 of 5	4 of 5	2 of 5	2 of 6	3 of 6	3 of 6	3 of 6	1 of 6	2 of 6	2 of 6	1 of 6	3 of 5	3 of 5	2 of 5	3 of 5	3 of 6	4 of 6	4 of 5	3 of 5	5 of 6	4 of 5	3 of 5	1 of 6	6 of 6	2 of 6

RevPAR	2022	2023												2024					Year To Date			Running 3 Month			Running 12 Month		
	Dec	Jan	Feb	Mar	Apr	May	Jun	Jul	Aug	Sep	Oct	Nov	Dec	Jan	Feb	Mar	Apr	May	2022	2023	2024	2022	2023	2024	2022	2023	2024
My Property	20.08	21.27	24.52	24.95	23.96	23.54	27.44	24.07	22.03	21.37	28.13	22.88	22.52	20.24	27.57	36.88	30.40	28.02	22.47	23.63	28.63	26.27	24.15	31.78	25.79	22.21	25.96
Competitive Set	23.91	20.53	28.20	29.84	32.15	30.12	37.80	32.45	24.45	25.19	30.54	24.78	26.27	24.78	33.24	38.05	36.50	36.91	21.43	28.14	33.89	24.74	30.69	37.16	22.13	27.14	30.89
Index (RGI)	84.0	103.6	86.9	83.6	74.5	78.1	72.6	74.2	90.1	84.8	92.1	92.4	85.8	81.7	82.9	96.9	83.3	75.9	104.8	84.0	84.5	106.2	78.7	85.5	116.5	81.9	84.0
Rank	4 of 6	3 of 5	4 of 5	3 of 5	3 of 5	4 of 6	4 of 6	4 of 6	3 of 6	4 of 6	3 of 6	3 of 6	4 of 6	4 of 6	3 of 6	3 of 6	4 of 6	4 of 6	3 of 6	3 of 5	4 of 6	4 of 6	3 of 5	3 of 6	2 of 6	4 of 6	4 of 6

% Chg	2022	2023												2024					Year To Date			Running 3 Month			Running 12 Month		
	Dec	Jan	Feb	Mar	Apr	May	Jun	Jul	Aug	Sep	Oct	Nov	Dec	Jan	Feb	Mar	Apr	May	2022	2023	2024	2022	2023	2024	2022	2023	2024
My Property	-10.5	39.1	36.9	8.3	-16.7	-13.1	1.1	7.9	-12.8	25.3	28.3	58.9	12.2	-4.8	12.5	47.9	26.9	19.0	-11.3	5.2	21.2	-3.4	-8.1	31.6	13.4	-13.9	16.9
Competitive Set	46.8	44.7	51.9	35.7	23.5	14.8	12.0	16.3	2.1	19.9	-1.3	5.4	9.9	20.7	17.9	27.5	13.6	22.5	1.6	31.3	20.4	8.6	24.0	21.1	1.8	22.6	13.8
Index (RGI)	-39.1	-3.8	-9.9	-20.3	-32.5	-24.3	-9.7	-7.2	-14.6	4.4	30.0	50.8	2.1	-21.2	-4.6	15.9	11.7	-2.8	-12.7	-19.9	0.6	-11.0	-25.9	8.7	11.4	-29.8	2.7
Rank	5 of 6	3 of 5	3 of 5	3 of 5	3 of 5	5 of 6	4 of 6	4 of 6	5 of 6	2 of 6	1 of 6	1 of 6	3 of 6	5 of 5	3 of 5	2 of 5	2 of 5	4 of 6	4 of 6	3 of 5	4 of 5	3 of 6	3 of 5	3 of 5	3 of 6	5 of 6	4 of 6

Tab 5 - Response Report

Quality Inn & Suites Jackson 5723 I-55 Jackson, MS 39206 Phone: (601) 957-8557
 STR # 35402 ChainID: MS375 MgtCo: None Owner: None
 For the Month of: May 2024 Date Created: June 17, 2024

This Year

May 12th - Mother's Day
 May 27th - Memorial Day

May 2024 (This Year)

Sun	Mon	Tue	Wed	Thu	Fri	Sat
			1	2	3	4
5	6	7	8	9	10	11
12	13	14	15	16	17	18
19	20	21	22	23	24	25
26	27	28	29	30	31	

May 2023 (Last Year)

Sun	Mon	Tue	Wed	Thu	Fri	Sat
	1	2	3	4	5	6
7	8	9	10	11	12	13
14	15	16	17	18	19	20
21	22	23	24	25	26	27
28	29	30	31			

Last Year

May 14th - Mother's Day
 May 29th - Memorial Day

STR#	Name	City, State	Zip	Phone	Rooms	Open Date
35402	Quality Inn & Suites Jackson	Jackson, MS	39206	(601) 957-8557	78	199712
6690	Red Roof Inn Jackson North Ridgeland	Ridgeland, MS	39157	(601) 956-7707	103	198507
34857	Wingate by Wyndham Ridgeland	Ridgeland, MS	39157	(601) 977-6111	111	199707
40534	Baymont by Wyndham Jackson Ridgeland	Jackson, MS	39206	(601) 206-1616	121	200008
40588	Super 8 Jackson/North	Jackson, MS	39211	(601) 980-1518	59	200007
41458	OYO Townhouse Jackson/Ridgeland	Jackson, MS	39206	(601) 956-8686	60	200106
					532	

2022												2023												2024				
Jun	Jul	Aug	Sep	Oct	Nov	Dec	Jan	Feb	Mar	Apr	May	Jun	Jul	Aug	Sep	Oct	Nov	Dec	Jan	Feb	Mar	Apr	May	Jan	Feb	Mar	Apr	May
●	●	●	●	●	●	●	●	●	●	●	●	●	●	●	●	●	●	●	●	●	●	●	●	●	●	●	●	●
●	●	●	●	●	●	●	●	●	●	●	●	●	●	●	●	●	●	●	●	●	●	●	●	●	●	●	●	●
●	●	●	●	●	●	●	●	●	●	●	●	●	●	●	●	●	●	●	●	●	●	●	●	●	●	●	●	●
●	●	●	●	●	●	●	●	●	●	●	●	●	●	●	●	●	●	●	●	●	●	●	●	●	●	●	●	●
●	●	●	●	●	●	●	●	●	●	●	●	●	●	●	●	●	●	●	●	●	●	●	●	●	●	●	●	●
●	●	●	●	●	●	●	●	●	●	●	●	●	●	●	●	●	●	●	●	●	●	●	●	●	●	●	●	●
●	●	●	●	●	●	●	●	●	●	●	●	●	●	●	●	●	●	●	●	●	●	●	●	●	●	●	●	●
●	●	●	●	●	●	●	●	●	●	●	●	●	●	●	●	●	●	●	●	●	●	●	●	●	●	●	●	●
●	●	●	●	●	●	●	●	●	●	●	●	●	●	●	●	●	●	●	●	●	●	●	●	●	●	●	●	●

Data received:

- = Monthly Only
- = Monthly & Daily

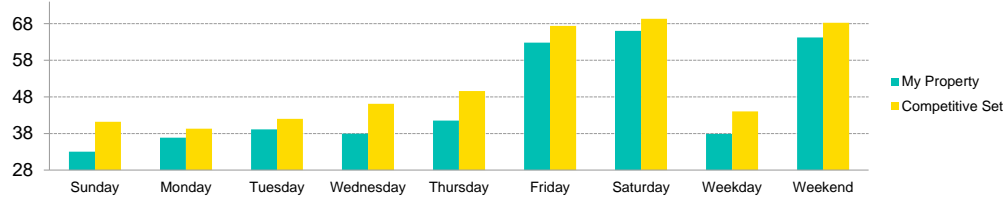
Tab 6 - Day of Week and Weekday/Weekend Report

Quality Inn & Suites Jackson 5723 I-55 Jackson, MS 39206 Phone: (601) 957-8557

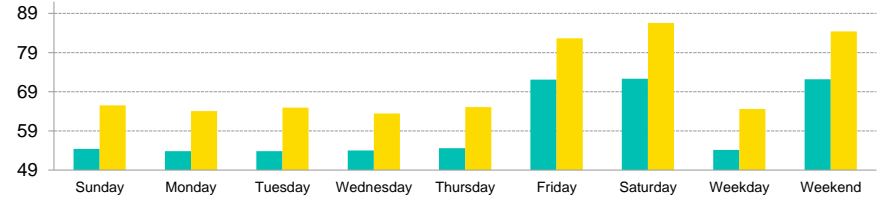
STR # 35402 ChainID: MS375 MgtCo: None Owner: None

For the Month of: May 2024 Date Created: June 17, 2024 Monthly Competitive Set Data Excludes Subject Property

Current Month Occupancy



Current Month ADR

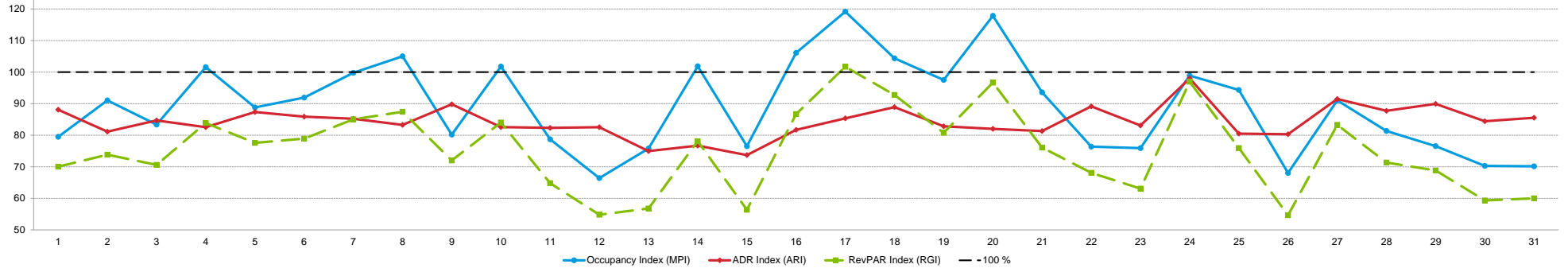


Day of Week	Time Period	Occupancy (%)			Average Daily Rate			RevPAR											
		My Property	Competitive Set	Index (MPI)	My Property	Competitive Set	Index (ARI)	My Property	Competitive Set	Index (RGI)									
Sunday	Current Month	33.0	-16.3	41.2	12.7	80.1	-25.7	54.42	-4.7	65.52	4.7	83.1	-8.9	17.97	-20.2	26.99	17.9	66.6	-32.3
	Year To Date	41.6	10.3	41.4	27.8	100.5	-13.7	55.53	0.1	60.93	-1.5	91.1	1.7	23.09	10.4	25.20	25.8	91.6	-12.3
	Running 3 Month	43.4	13.1	43.2	27.3	100.5	-11.2	56.11	-0.3	62.50	-0.2	89.8	0.0	24.35	12.8	26.99	27.0	90.2	-11.2
	Running 12 Month	35.7	4.3	38.3	24.9	93.0	-16.5	56.94	1.2	59.94	-5.7	95.0	7.4	20.30	5.6	22.98	17.8	88.3	-10.4
Monday	Current Month	36.9	-0.9	39.3	7.0	93.7	-7.4	53.84	-3.3	64.09	5.6	84.0	-8.5	19.85	-4.2	25.20	13.1	78.8	-15.2
	Year To Date	41.4	14.9	42.2	22.5	98.3	-6.2	54.85	-0.8	61.55	0.0	89.1	-0.8	22.73	14.0	25.95	22.5	87.6	-7.0
	Running 3 Month	44.8	24.4	43.1	20.5	104.0	3.2	56.27	-0.8	62.75	2.2	89.7	-3.0	25.19	23.3	27.02	23.2	93.2	0.1
	Running 12 Month	36.6	12.3	38.9	22.7	94.0	-8.5	56.44	5.0	60.08	-2.8	93.9	8.1	20.65	18.0	23.38	19.3	88.3	-1.1
Tuesday	Current Month	39.1	12.1	42.0	3.6	93.1	8.3	53.82	-2.9	64.96	6.9	82.8	-9.2	21.04	8.9	27.29	10.7	77.1	-1.6
	Year To Date	42.8	18.5	44.0	21.0	97.4	-2.0	54.64	-2.5	62.18	0.3	87.9	-2.8	23.40	15.6	27.34	21.4	85.6	-4.7
	Running 3 Month	46.1	31.2	45.5	18.4	101.1	10.8	55.91	1.7	64.00	2.5	87.4	-0.7	25.75	33.5	29.15	21.3	88.4	10.0
	Running 12 Month	38.7	15.3	40.7	20.8	95.2	-4.6	56.66	0.2	61.53	-2.1	92.1	2.3	21.95	15.4	25.04	18.2	87.7	-2.4
Wednesday	Current Month	37.9	2.8	46.1	8.3	82.4	-5.1	54.01	1.1	63.47	4.5	85.1	-3.3	20.49	3.9	29.24	13.2	70.1	-8.2
	Year To Date	46.1	21.3	46.9	22.8	98.3	-1.2	54.81	2.5	63.01	1.3	87.0	1.2	25.27	24.4	29.55	24.5	85.5	-0.1
	Running 3 Month	49.6	27.8	49.4	20.8	100.4	5.8	55.79	3.2	63.60	1.2	87.7	1.9	27.68	31.8	31.43	22.2	88.0	7.8
	Running 12 Month	40.7	11.2	42.9	22.4	94.9	-9.2	55.52	2.6	62.02	-1.9	89.5	4.5	22.59	14.1	26.60	20.1	84.9	-5.1
Thursday	Current Month	41.5	8.0	49.6	7.0	83.7	1.0	54.58	-2.6	65.07	5.1	83.9	-7.4	22.67	5.2	32.28	12.5	70.2	-6.5
	Year To Date	46.7	18.4	49.5	25.9	94.4	-6.0	56.80	2.8	64.58	0.9	88.0	1.8	26.55	21.6	31.96	27.1	83.1	-4.3
	Running 3 Month	48.4	18.3	51.8	21.3	93.4	-2.4	58.07	5.8	65.53	1.7	88.6	4.1	28.12	25.2	33.96	23.3	82.8	1.5
	Running 12 Month	41.7	8.6	45.5	23.4	91.7	-12.0	57.49	2.9	63.00	-3.5	91.2	6.7	23.96	11.8	28.65	19.0	83.6	-6.1
Friday	Current Month	62.8	28.1	67.4	19.3	93.2	7.4	72.08	19.9	82.62	7.3	87.2	11.7	45.28	53.7	55.69	28.1	81.3	20.0
	Year To Date	58.7	23.2	61.2	14.8	95.9	7.3	66.84	7.5	76.91	1.6	86.9	5.9	39.22	32.5	47.05	16.6	83.4	13.7
	Running 3 Month	63.2	35.5	65.7	15.1	96.1	17.7	69.09	9.1	80.42	2.6	85.9	6.3	43.66	47.8	52.88	18.1	82.6	25.1
	Running 12 Month	52.8	24.4	56.3	10.1	93.8	13.0	68.13	4.1	75.64	-4.0	90.1	8.4	35.98	29.4	42.59	5.8	84.5	22.4
Saturday	Current Month	66.0	21.9	69.3	14.4	95.2	6.6	72.32	14.6	86.58	10.7	83.5	3.5	47.75	39.7	60.03	26.6	79.5	10.3
	Year To Date	61.1	17.4	64.7	8.8	94.4	7.9	66.21	4.1	78.22	2.9	84.6	1.2	40.42	22.2	50.60	11.9	79.9	9.2
	Running 3 Month	67.7	27.5	69.5	10.1	97.3	15.8	69.23	5.3	82.67	4.5	83.7	0.8	46.84	34.3	57.49	15.0	81.5	16.7
	Running 12 Month	52.6	14.6	60.4	8.6	87.1	5.6	68.69	2.7	77.52	-0.3	88.6	3.0	36.14	17.7	46.83	8.2	77.2	8.8
Weekday/Weekend	Current Month	37.9	1.7	44.0	8.8	86.0	-6.5	54.15	-2.4	64.59	5.5	83.8	-7.4	20.51	-0.7	28.43	14.7	72.1	-13.4
	Year To Date	43.8	16.9	44.8	24.1	97.7	-5.9	55.35	0.5	62.55	0.3	88.5	0.1	24.22	17.4	28.02	24.6	86.4	-5.7
	Running 3 Month	46.4	22.8	46.6	21.4	99.7	1.2	56.44	2.0	63.75	1.5	88.5	0.5	26.22	25.3	29.71	23.2	88.2	1.7
	Running 12 Month	38.7	10.3	41.3	22.8	93.7	-10.2	56.61	2.4	61.40	-3.2	92.2	5.7	21.90	12.9	25.34	19.0	86.4	-5.1
Weekend (Fri-Sat)	Current Month	64.2	24.5	68.3	16.6	94.1	6.8	72.19	17.0	84.41	8.8	85.5	7.6	46.38	45.7	57.62	26.8	80.5	14.9
	Year To Date	59.8	20.1	62.9	11.5	95.1	7.7	66.52	5.8	77.57	2.2	85.8	3.5	39.81	27.0	48.78	14.0	81.6	11.4
	Running 3 Month	65.3	31.1	67.6	12.3	96.7	16.7	69.16	7.0	81.54	3.5	84.8	3.4	45.19	40.3	55.10	16.3	82.0	20.6
	Running 12 Month	52.7	19.3	58.3	9.3	90.4	9.2	68.41	3.3	76.61	-2.1	89.3	5.5	36.06	23.3	44.69	7.0	80.7	15.2
Total	Current Month	45.5	11.2	51.1	13.0	89.2	-1.6	61.54	7.0	72.28	8.4	85.1	-1.2	28.02	19.0	36.91	22.5	75.9	-2.8
	Year To Date	48.3	18.1	49.9	19.5	96.8	-1.2	59.26	2.6	67.94	0.8	87.2	1.8	28.63	21.2	33.89	20.4	84.5	0.6
	Running 3 Month	52.0	26.0	52.7	18.3	98.6	6.5	61.13	4.4	70.48	2.3	86.7	2.0	31.78	31.6	37.16	21.1	85.5	8.7
	Running 12 Month	42.7	13.4	46.2	17.6	92.5	-3.6	60.79	3.1	66.93	-3.2	90.8	6.5	25.96	16.9	30.89	13.8	84.0	2.7

Tab 7 - Daily Data for the Month

Quality Inn & Suites Jackson 5723 I-55 Jackson, MS 39206 Phone: (601) 957-8557
 STR # 35402 ChainID: MS375 MgtCo: None Owner: None
 For the Month of: May 2024 Date Created: June 17, 2024 Daily Competitive Set Data Excludes Subject Property

Daily Indexes for the Month of May



	We	Th	Fr	Sa	Su	Mo	Tu	We	Th	Fr	Sa	Su	Mo	Tu	We	Th	Fr	Sa	Su	Mo	Tu	We	Th	Fr	Sa	Su	Mo	Tu	We	Th	Fr		
Occupancy (%)	May																																
My Property	35.9	48.7	69.2	80.8	34.6	34.6	38.5	44.9	34.6	64.1	48.7	21.8	28.2	35.9	29.5	44.9	66.7	66.7	41.0	42.3	41.0	37.2	38.5	66.7	67.9	34.6	42.3	41.0	42.3	41.0	42.3	41.0	47.4
Competitive Set	45.2	53.5	83.0	79.5	39.0	37.7	38.5	42.7	43.2	63.0	61.9	32.8	37.2	35.2	38.5	42.3	55.9	63.9	42.1	35.9	43.8	48.7	50.7	67.4	72.0	50.9	46.5	50.4	55.3	58.4	67.6		
Index (MPI)	79.5	91.0	83.4	101.6	88.8	91.9	99.8	105.0	80.2	101.8	78.7	66.4	75.8	101.9	76.5	106.1	119.2	104.4	97.5	117.8	93.6	76.4	75.9	98.9	94.3	68.0	91.0	81.3	76.5	70.3	70.1		

	We	Th	Fr	Sa	Su	Mo	Tu	We	Th	Fr	Sa	Su	Mo	Tu	We	Th	Fr	Sa	Su	Mo	Tu	We	Th	Fr	Sa	Su	Mo	Tu	We	Th	Fr
% Chg																															
My Property	40.0	52.0	28.6	40.0	8.0	-25.0	20.0	40.0	-6.9	42.9	-2.6	-54.1	-26.7	-15.2	-41.0	2.9	36.8	-1.9	14.3	26.9	14.3	3.6	-6.2	36.8	65.6	-18.2	73.7	52.4	3.1	6.7	12.1
Competitive Set	4.0	-4.6	29.3	18.8	10.6	4.9	-2.8	-9.3	2.6	21.7	6.4	6.4	0.6	-20.4	-12.1	-7.2	-7.3	5.8	8.5	-9.9	7.6	19.5	9.0	21.4	13.5	12.7	27.1	26.5	28.1	39.5	14.6
Index (MPI)	34.6	59.3	-0.6	17.9	-2.4	-28.5	23.4	54.4	-9.3	17.4	-8.5	-56.8	-27.1	6.6	-32.9	11.0	47.6	-7.3	5.3	40.9	6.2	-13.3	-14.0	12.7	45.9	-27.4	36.6	20.4	-19.5	-23.5	-2.1

	1	2	3	4	5	6	7	8	9	10	11	12	13	14	15	16	17	18	19	20	21	22	23	24	25	26	27	28	29	30	31
ADR	May																														
My Property	57.08	56.53	78.72	76.80	56.07	54.55	52.38	52.08	55.97	67.42	67.24	53.25	50.33	52.10	50.07	53.44	69.03	69.81	53.64	53.11	55.18	57.09	53.21	78.43	73.09	54.45	56.34	55.31	53.47	53.62	64.02
Competitive Set	64.80	69.68	92.97	93.03	64.19	63.51	61.46	62.56	62.32	81.64	81.68	64.51	67.15	67.94	67.94	65.42	80.89	78.53	64.76	64.74	67.86	64.05	64.06	80.03	90.81	67.80	61.59	63.04	59.44	63.50	74.85
Index (ARI)	88.1	81.1	84.7	82.6	87.4	85.9	85.2	83.3	89.8	82.6	82.3	82.5	75.0	76.7	73.7	81.7	85.3	88.9	82.8	82.0	81.3	89.1	83.1	98.0	80.5	80.3	91.5	87.7	89.9	84.4	85.5

	1	2	3	4	5	6	7	8	9	10	11	12	13	14	15	16	17	18	19	20	21	22	23	24	25	26	27	28	29	30	31
% Chg																															
My Property	36.2	5.4	36.2	29.0	5.4	12.4	6.9	10.5	6.4	20.0	13.0	7.5	-1.2	-9.9	-3.1	0.5	6.4	0.8	-17.2	-8.2	-9.5	-9.6	-17.0	27.7	17.3	-12.2	-9.0	-8.4	-9.8	-4.8	-3.2
Competitive Set	9.2	11.9	9.1	15.7	4.3	5.9	-1.1	6.7	0.1	17.8	9.9	0.7	10.1	13.1	16.4	9.9	6.7	2.3	5.7	7.6	14.8	4.2	1.5	6.3	13.4	7.3	-0.1	-1.2	-9.1	-2.9	3.2
Index (ARI)	24.8	-5.8	24.8	11.5	1.1	6.1	8.1	3.6	6.2	1.8	2.8	6.8	-10.3	-20.3	-16.7	-8.6	-0.3	-1.5	-21.6	-14.7	-21.1	-13.2	-18.2	20.2	3.4	-18.2	-8.9	-7.3	-0.7	-1.9	-6.2

	1	2	3	4	5	6	7	8	9	10	11	12	13	14	15	16	17	18	19	20	21	22	23	24	25	26	27	28	29	30	31
RevPAR	May																														
My Property	20.49	27.54	54.50	62.03	19.41	18.88	20.15	23.37	19.37	43.21	32.76	11.61	14.20	18.70	14.76	23.98	46.02	46.54	22.01	22.47	22.64	21.23	20.47	52.29	49.66	18.85	23.83	22.69	22.62	22.00	30.37
Competitive Set	29.26	37.30	77.20	73.97	25.03	23.92	23.69	26.73	26.90	51.43	50.56	21.17	25.00	23.94	26.19	27.67	45.26	50.16	27.25	23.25	29.74	31.18	32.45	53.94	65.41	34.50	28.62	31.80	32.86	37.07	50.61
Index (RGI)	70.0	73.8	70.6	83.9	77.6	78.9	85.0	87.4	72.0	84.0	64.8	54.8	56.8	78.1	56.4	86.7	101.7	92.8	80.8	96.7	76.1	68.1	63.1	96.9	75.9	54.6	83.3	71.4	68.8	59.3	60.0

	1	2	3	4	5	6	7	8	9	10	11	12	13	14	15	16	17	18	19	20	21	22	23	24	25	26	27	28	29	30	31
% Chg																															
My Property	90.7	60.2	75.1	80.7	13.8	-15.7	28.3	54.7	-1.0	71.4	10.1	-50.6	-27.6	-23.5	-42.8	3.4	45.5	-1.1	-5.4	16.6	3.5	-6.3	-22.2	74.8	94.3	-28.1	58.1	39.6	-7.0	1.6	8.5
Competitive Set	13.6	6.8	41.1	37.5	15.3	11.1	-3.8	-3.3	2.8	43.4	16.9	7.1	10.7	-10.0	2.4	1.9	-1.1	8.3	14.7	-3.1	23.5	24.4	10.7	29.1	28.8	20.9	27.0	25.0	16.3	35.5	18.2
Index (RGI)	67.9	50.0	24.1	31.4	-1.3	-24.1	33.4	60.0	-3.6	19.5	-5.9	-53.9	-34.6	-15.0	-44.2	1.5	47.2	-8.7	-17.5	20.3	-16.2	-24.7	-29.7	35.4	50.9	-40.6	24.5	11.7	-20.0	-25.0	-8.1

2024 © CoStar Group. This STR Report is a publication of STR, LLC and STR Global, Ltd. CoStar Group companies, and is intended solely for use by paid subscribers. The information in the STR Report is provided on an "as is" and "as available" basis and should not be construed as investment, tax, accounting or legal advice. Reproduction or distribution of this STR Report, in whole or part, without written permission is prohibited and subject to legal action. If you have received this report and are NOT a subscriber to this STR Report, please contact us immediately. Source: 2024 STR, LLC / STR Global, Ltd. trading as "STR".



How can we assist you?

Glossary:

For all STR definitions, please click here or visit www.str.com/data-insights/resources/glossary

Frequently Asked Questions (FAQ):

For all STR FAQs, please click here or visit www.str.com/data-insights/resources/FAQ

For additional support, please [contact](#) your regional office.

For the latest in industry news, visit HotelNewsNow.com.

To learn more about the Hotel Data Conference, visit HotelDataConference.com.