

Majestic Complex

4100-4138 Woodward Ave, Detroit MI



For More Information, Contact:

Dan McCleary

248.351.4384

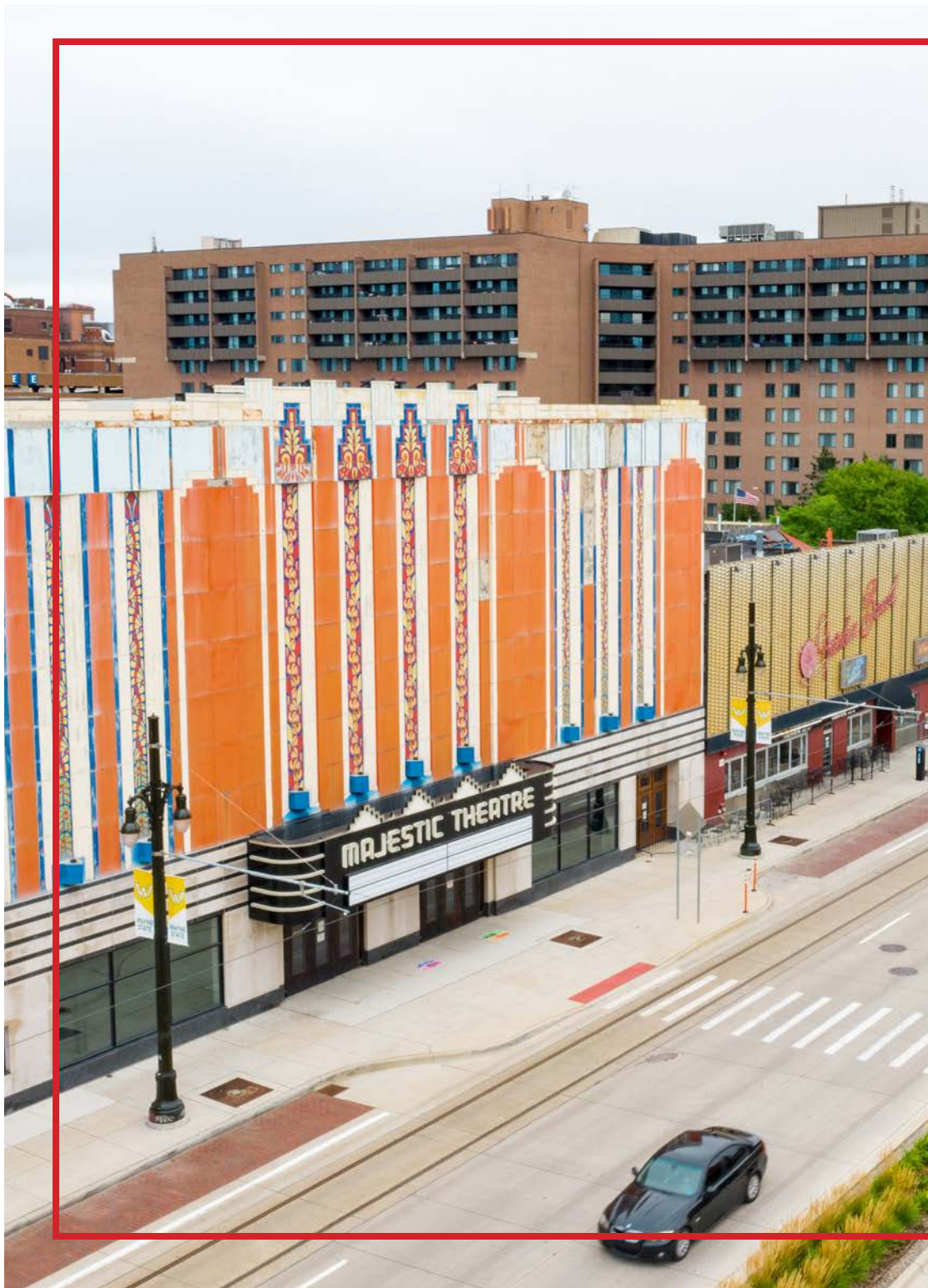
mccleary@farbman.com

Nathan Casey

248.351.4391

casey@farbman.com

NAI Farbman | **Farbman Group**
Commercial Real Estate Services, Worldwide.
MIDWEST EXPERTISE, GLOBAL REACH.



MAJESTIC THEATRE COMPLEX

4100-4138
Woodward Ave

DETROIT

Prime Midtown location makes this an amazing opportunity to be centered in the heart of Detroit's bright future- right across in the heart of Detroit's Midtown District! This is a rare Entertainment Opportunity with the Majestic Theatre, Garden Bowl, Alley Deck and Bar, Sgt Pepperoni's Pizzeria and the Magic Stick Music Venue. A package like this comes once in a lifetime with so much opportunity.

The location couldn't be better with all that surrounds- the Q-line, Mo-Go bikes and dozens of restaurants, coffee shops, venues, stadiums, casinos and more are within walking distance!

Property Information

4100 Woodward Ave

- 4,890 SF
- Built in 1985
- 11 Parking Spaces
- Multi-Tenant Office
- .16 Acres
- Dimensions: 50'x139'

4120-4138 Woodward Ave Majestic Theatre

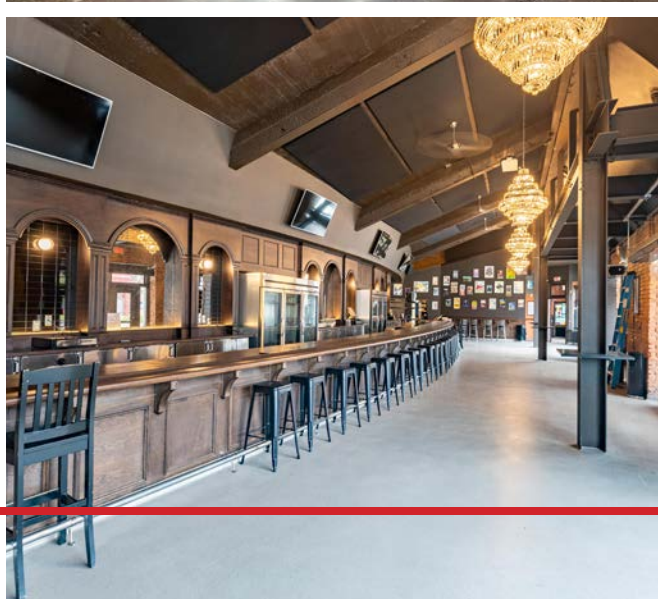
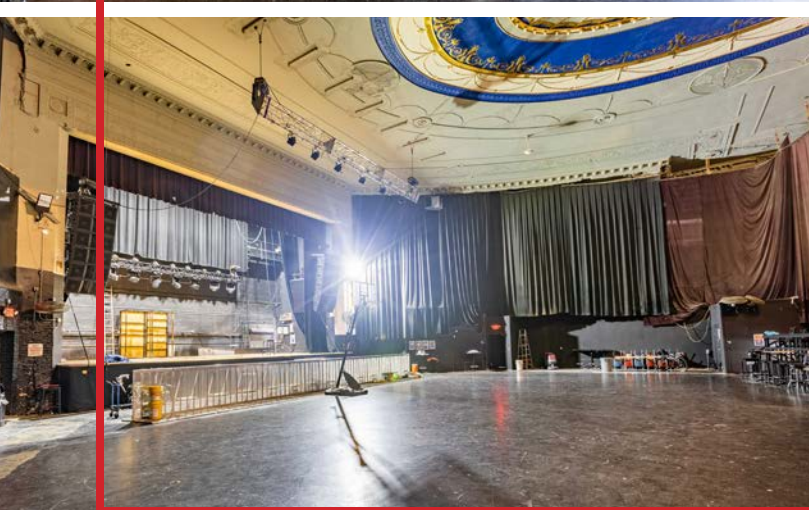
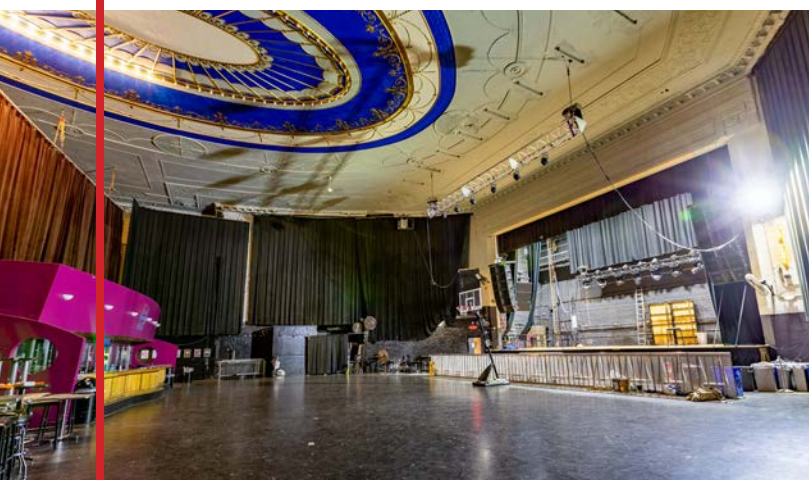
- 14,470 SF
- Built in 1922
- .39 Acres
- Dimensions: 116'x127'

4104 Woodward Ave Garden Bowl/Magic Stick

- 21,400 SF Bowling Alley
- 2 Floors
- Built in 1934
- .3 Acres
- Dimensions: 112'x133'
- 16 Lanes

Parking Spaces

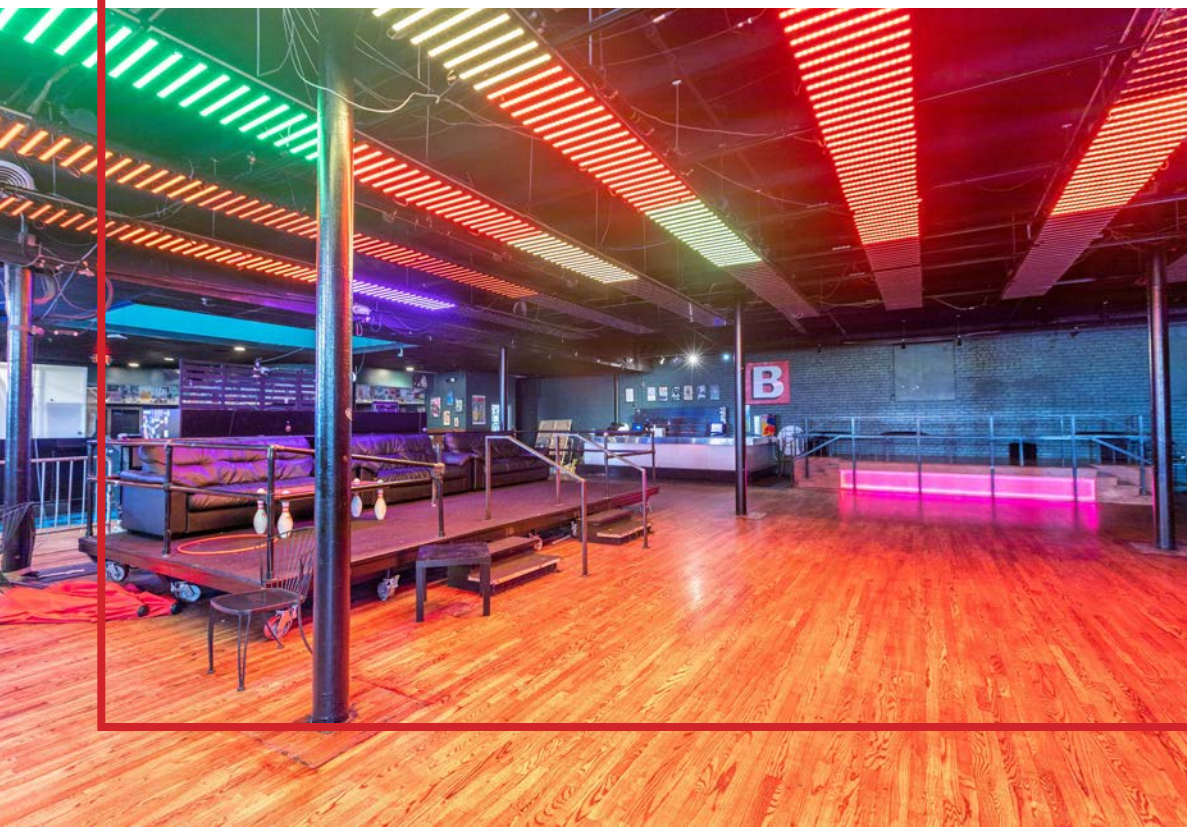
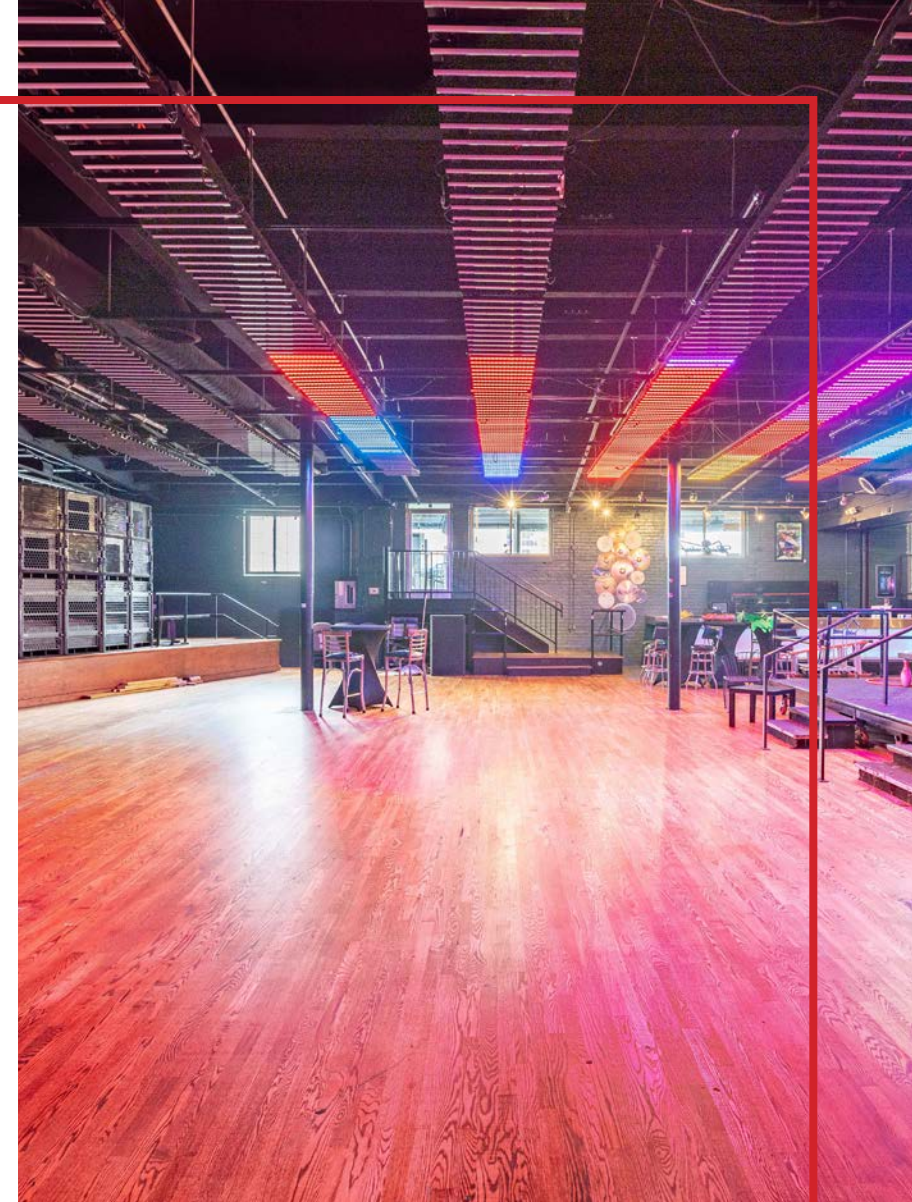
- .42 Acres
- Dimensions: 120'x152'
- 18,240 Land SF
- 75 Spaces



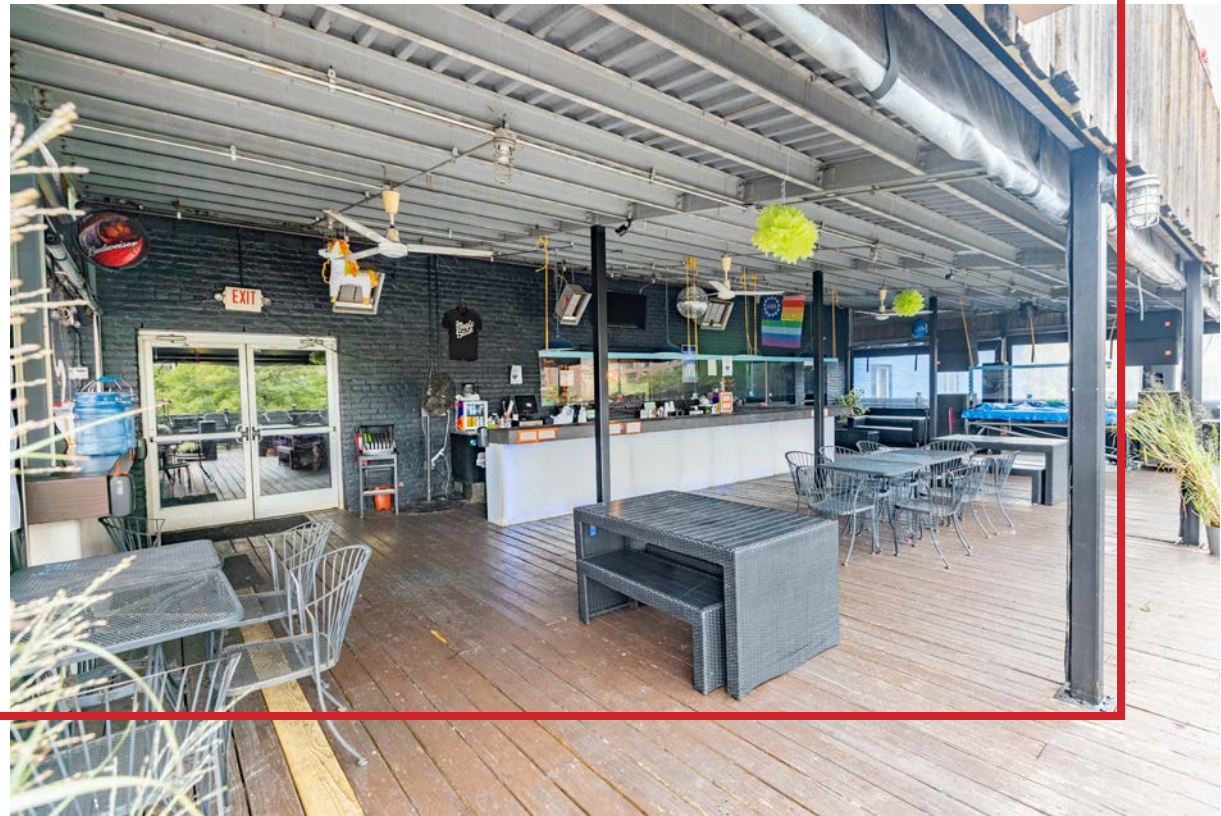
**MAJESTIC
THEATRE**



THE GARDEN BOWL



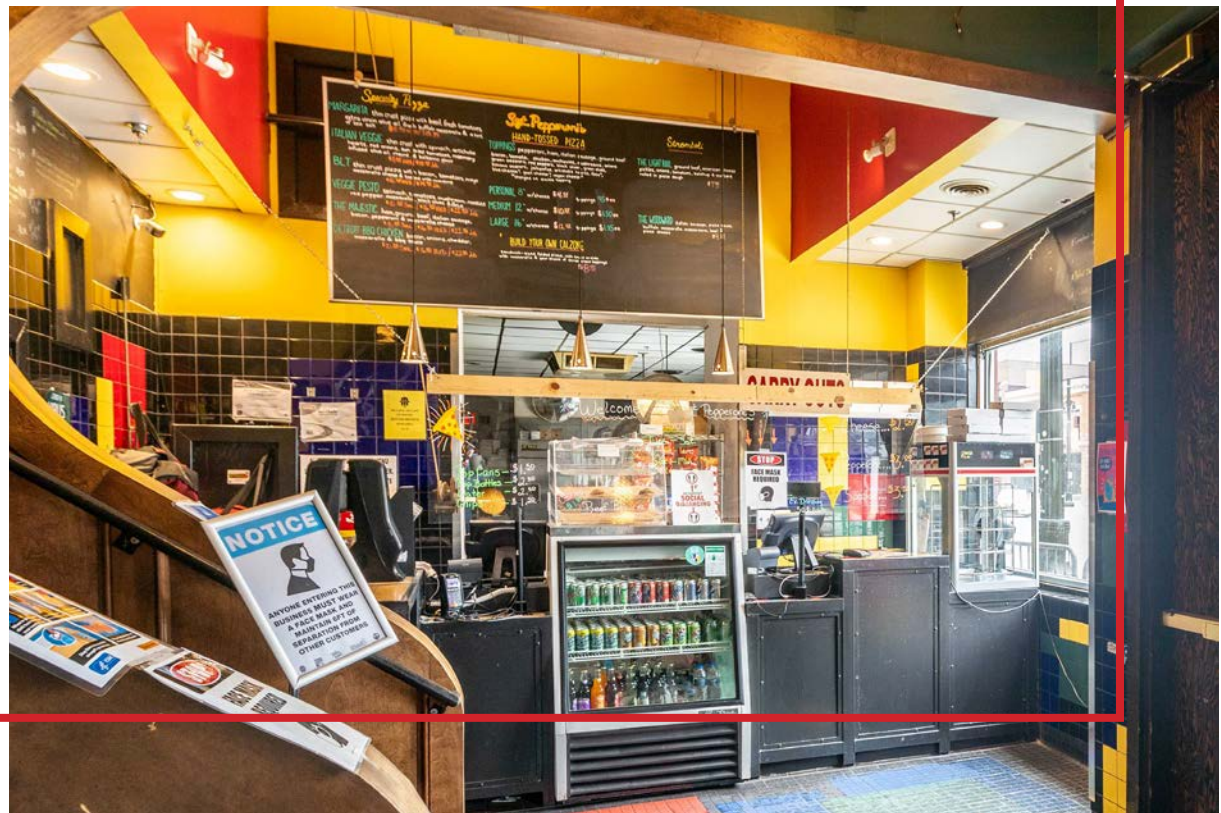
**MAGIC STICK
MUSIC VENUE**

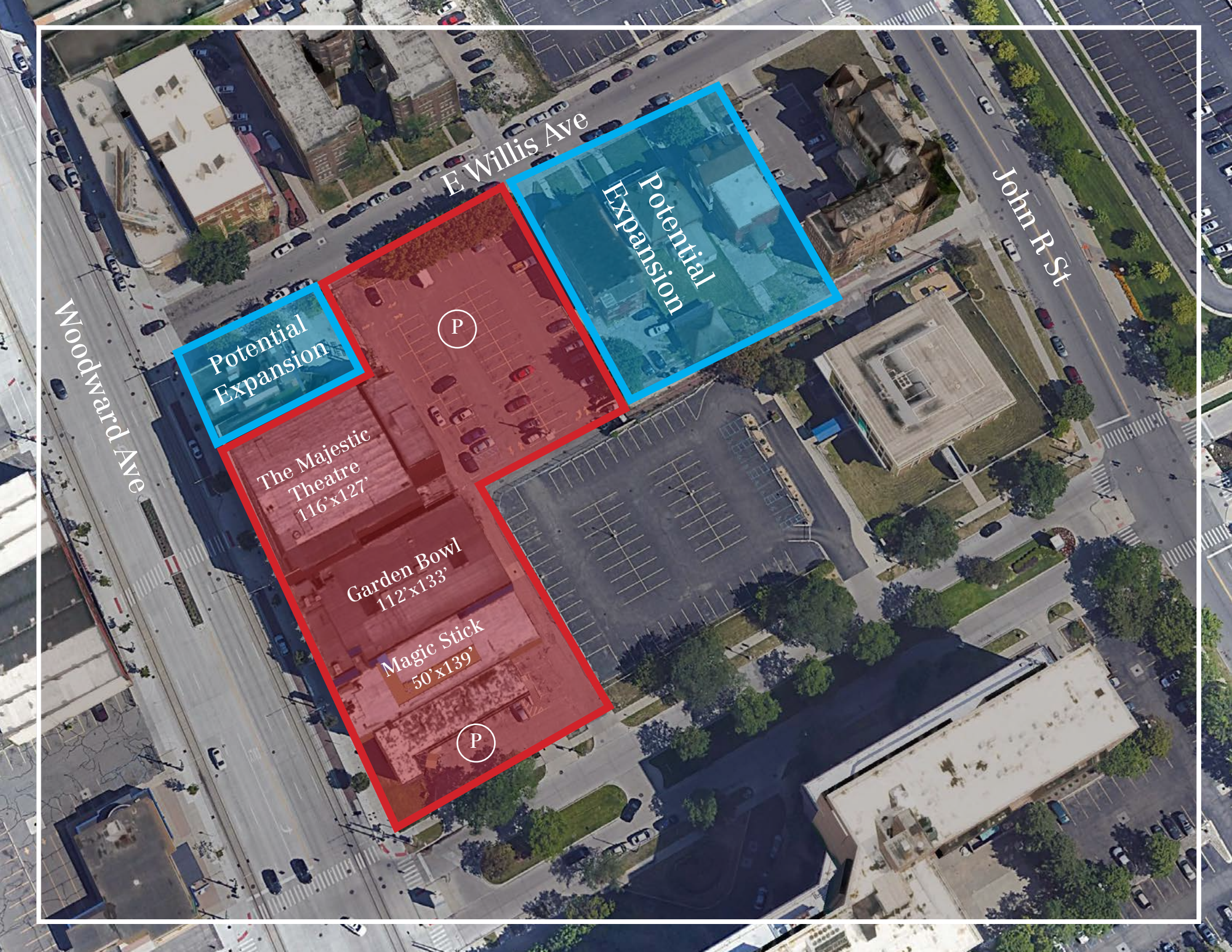


ALLEY DECK RESTAURANT/BAR



SGT. PEPPERONI'S PIZZERIA





Woodward Ave

E Willis Ave

John R St

Potential
Expansion

Potential
Expansion

The Majestic
Theatre
116'x127'

Garden Bowl
112'x133'

Magic Stick
50'x139'

P

P



E Willis Ave



75 Parking Spaces

Woodward Ave



11 Parking Spaces

Home to the majority of Detroit's cultural gems, Wayne State University and a revitalized retail and restaurant district, Midtown has quickly become tourists and locals hot spot to grab a five-star meal before a show or spend the night bar-hopping between old dives and new patios.

Midtown, Detroit is the place to be. An area of the city sandwiched between two Detroit neighborhoods with their own unique personalities – New Center and Brush Park – Midtown is the perfect connector. Midtown Detroit is a mixed-use area consisting of a business district, cultural center, a major research university, and several residential neighborhoods, located along the east and west side of Woodward Avenue, north of Downtown Detroit, and south of the New Center area.

Midtown is also home to the longest continuously running bowling alley in the country. The Garden Bowl is home to the city's best glow-bowl. Sharing a block with the storied Majestic Theatre, a night of both live music and strikes is not unusual at this Midtown classic. Detroit Symphony Orchestra is another staple of Midtown Detroit as one of Detroit's oldest and most cherished establishments, playing since the 1880s. The Detroit Symphony Orchestra's presence in the city is unparalleled. The sweet symphony sounds make a magical addition to Midtown adventures.

