



Washington
Federal.

Washington Federal BUILDING



405 S MAIN ST, SALT LAKE CITY, UT 84111



WASATCH
COMMERCIAL MANAGEMENT

Washington Federal



PROPERTY DETAILS

This 13-story professional office building is in the heart of downtown with exceptional visibility and features dramatic views of Downtown and the Wasatch Mountains from upper floors. The building was built in 1955, renovated in 2005, and listed on the National Register of Historic Places.

The building's proximity to landmarks, ample amenities and walking distance to Matheson and Moss Courthouses make it strategically located. The location is seamlessly connected to SLC's transit Trax infrastructure, with a Main Street stop in front of the office tower and annex, and convenient access to I-15.

BUILDING FEATURES

- Home to WaFed Bank on the main level
- Lobby features terrazo floors, marble walls and stainless-steel accents
- On-site Property Management
- Gated Parking Garage with 4/1000 parking
- Emergency generator covering all life safety systems on property
- Accessible transit; Trax and Bus
- Secure Bicycle Storage

SUMMARY OF AVAILABLE SPACE

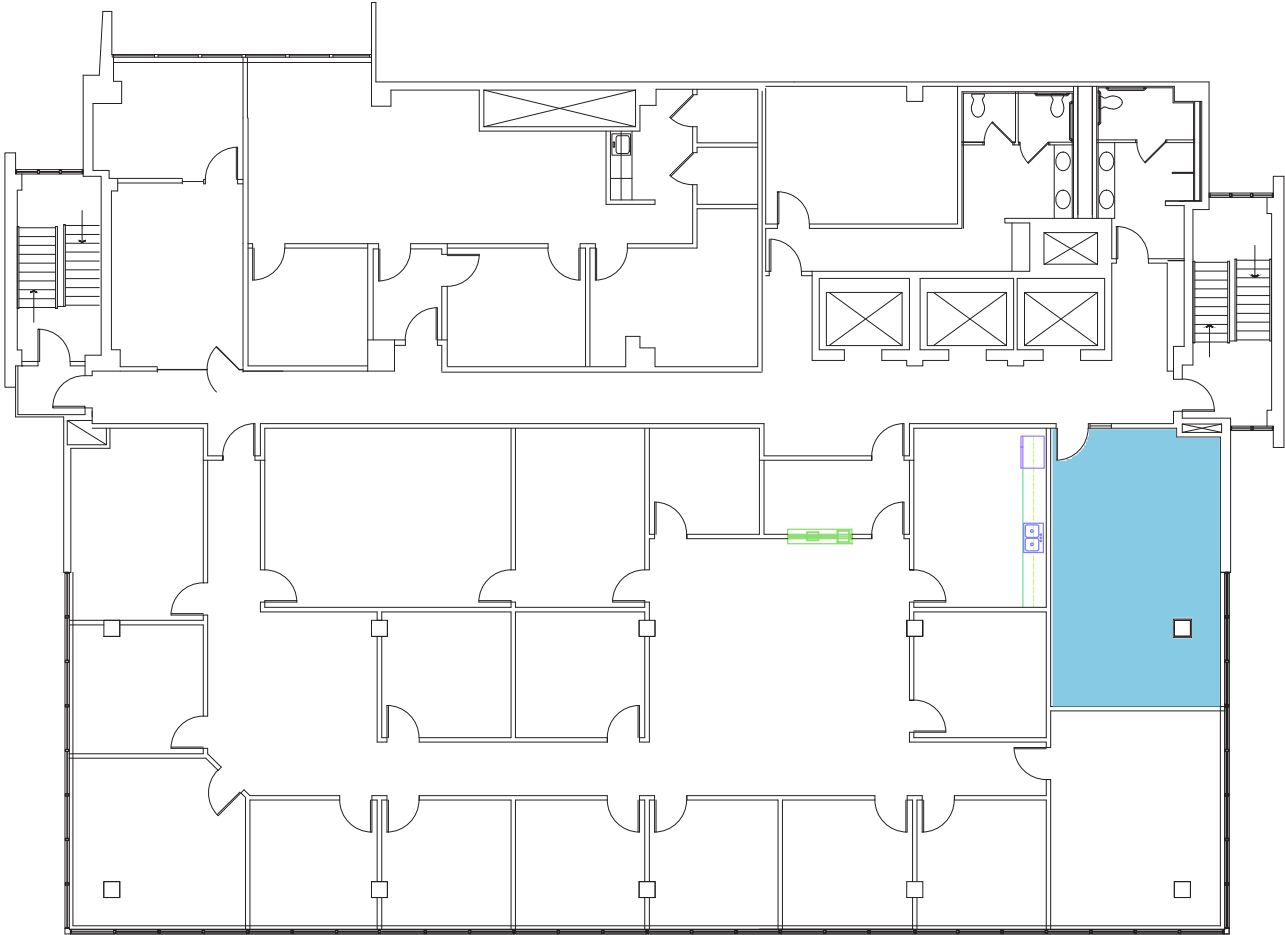
Floor	Suite	RSF
3rd	325	538
6th	Entire Floor	8,623
8th	875	998
9th	975	2,660
9th	930	1,184
10th	1050	2,733
10th	1075	2,224

3rd Floor

Floorplan

Available

Suite 325
538 SF

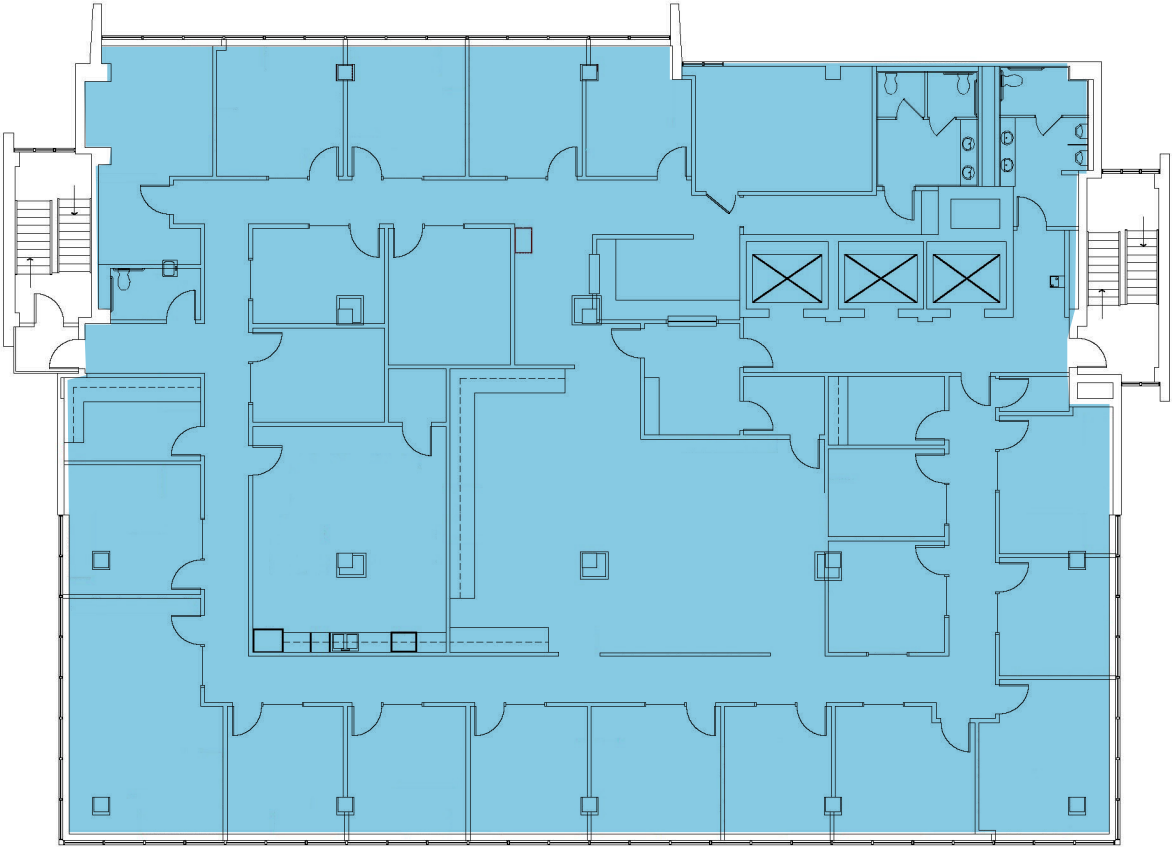


6th Floor

Floorplan

Available

Entire Floor
8,623 SF

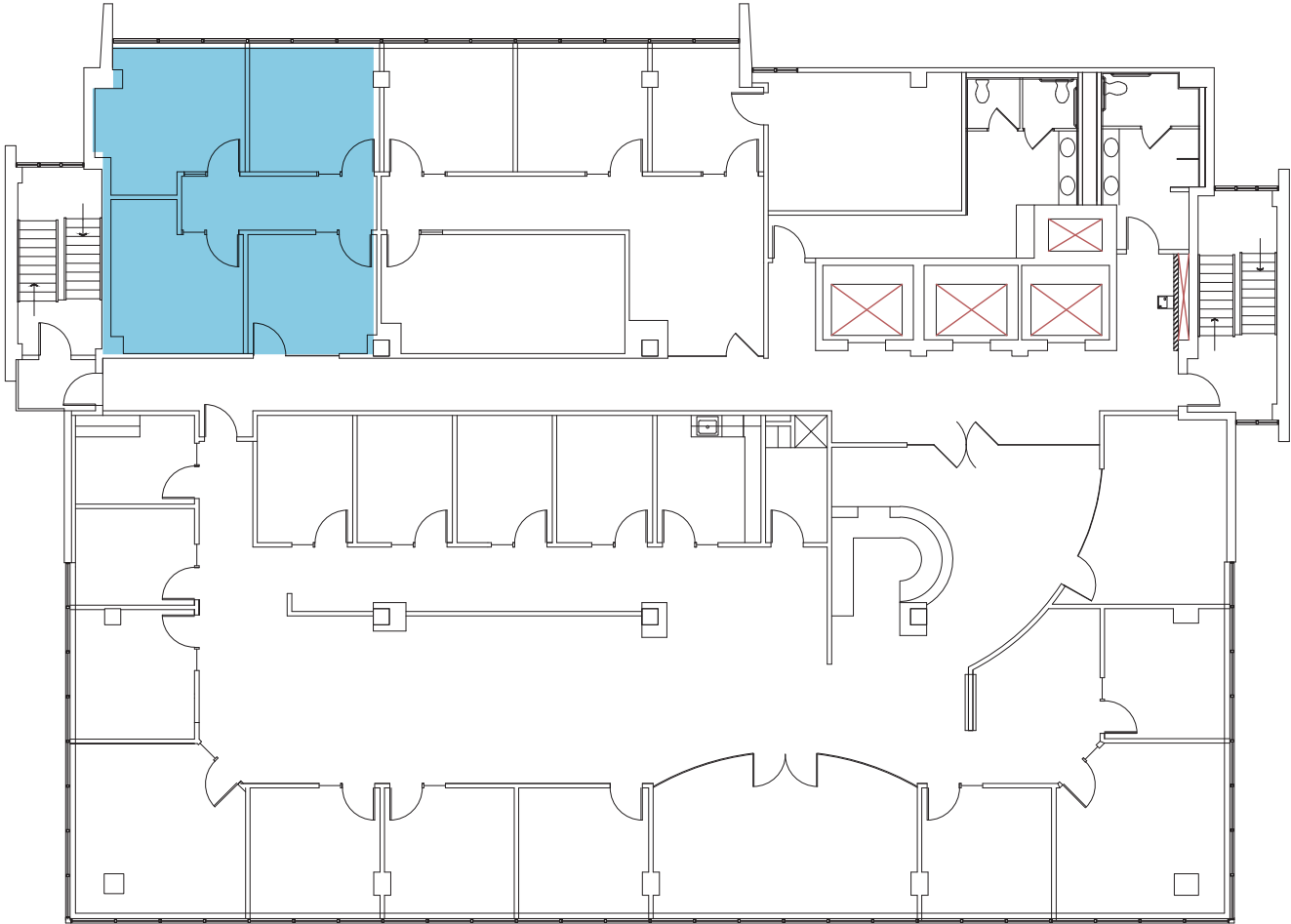


8th Floor

Floorplan

Available

Suite 875
998 SF



9th Floor

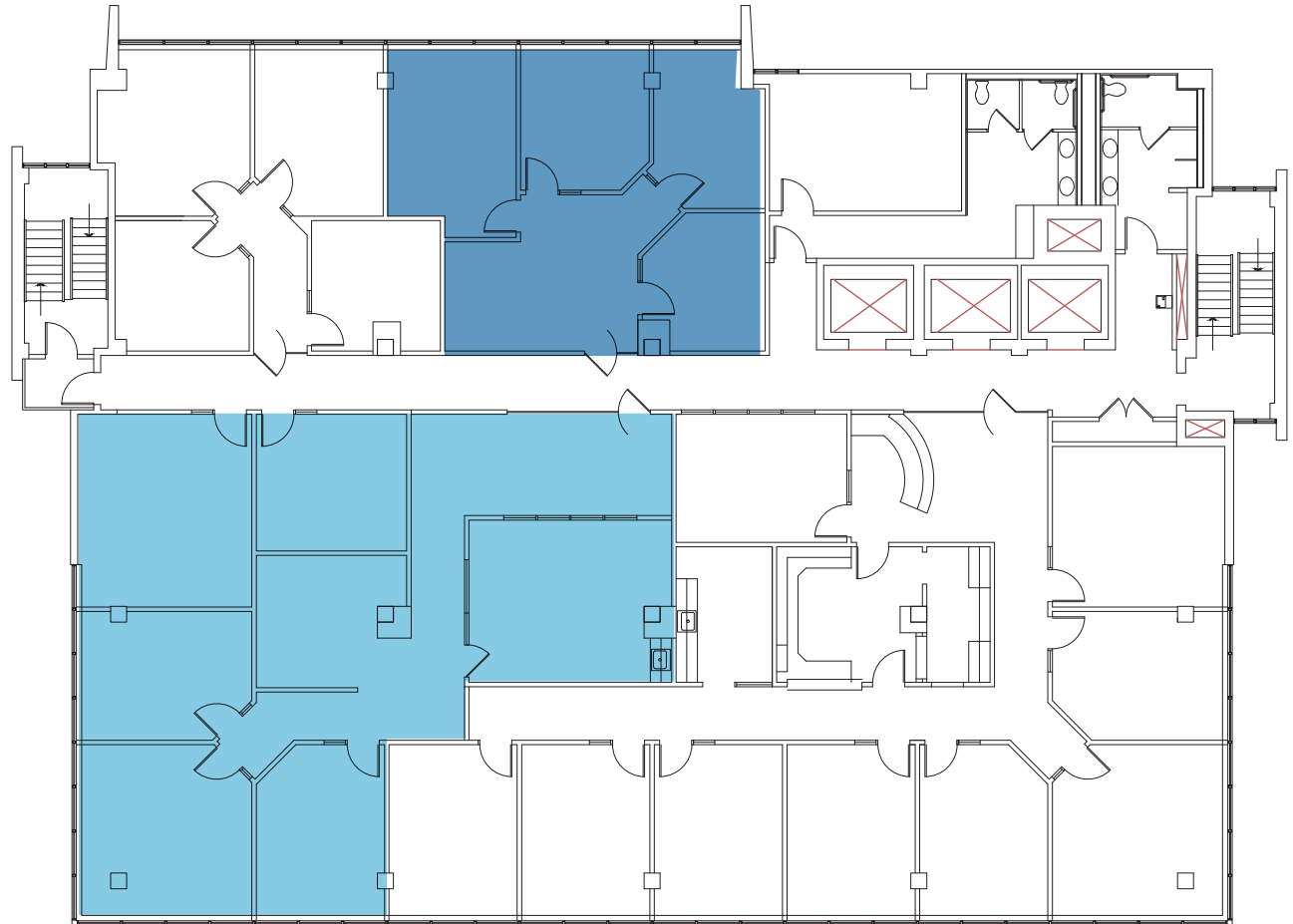
Floorplan

 Available

Suite 975
2,660 SF

 Available

Suite 930
1,184 SF



WASATCH
COMMERCIAL MANAGEMENT

10th Floor

Floorplan

 Available

Suite 1050

2,733 SF

 Available

Suite 1075

2,224 SF



WASATCH
COMMERCIAL MANAGEMENT



Contact Us

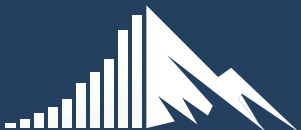
LET US HELP YOU FIND YOUR DESIRED OFFICE SPACE

John Dahlstrom

WASATCH COMMERCIAL MANAGEMENT

801.961.1102

john.dahlstrom@wasatchcommercial.com



WASATCH
COMMERCIAL MANAGEMENT