

FOR SUBLEASE

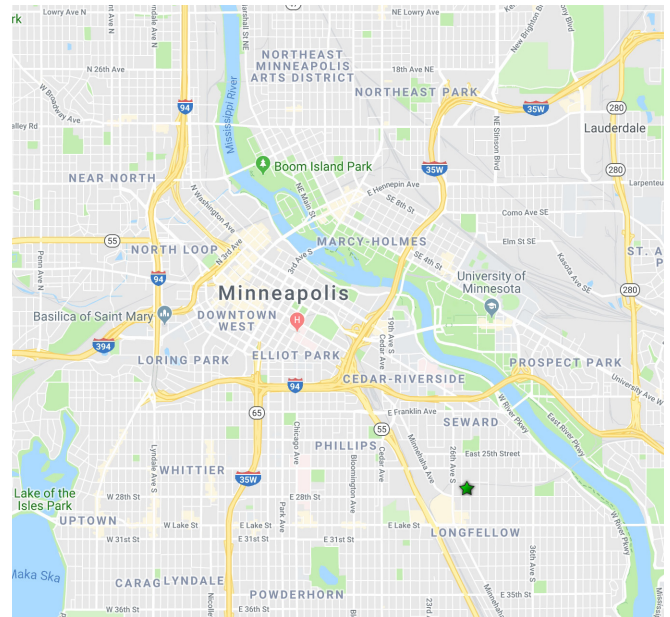
2700 EAST 28TH STREET

MINNEAPOLIS, MN 55406



PROPERTY FEATURES

- + TOTAL BUILDING: 165,197 SF
- AVAILABLE SPACE: 25,358 SF warehouse
- + YEAR BUILT: 1970
- + COLUMN SPACING: Approx. 34 X 30
- + CLEAR HEIGHT: Approx. 27'
- + LOADING: 3 docks | 1 drive-in
- + LEASE RATE: Negotiable
- + 2022 TAX/CAM: \$3.09 PSF
- + Short term deals only



CONTACT US

BRYAN VAN HOOF

Senior Vice President
+1 952 924 4624
bryan.vanhoof@cbre.com

JEFF PRZYTARSKI

First Vice President
+1 952 924 4895
jeff.przytarski@cbre.com

www.cbre.com

CBRE

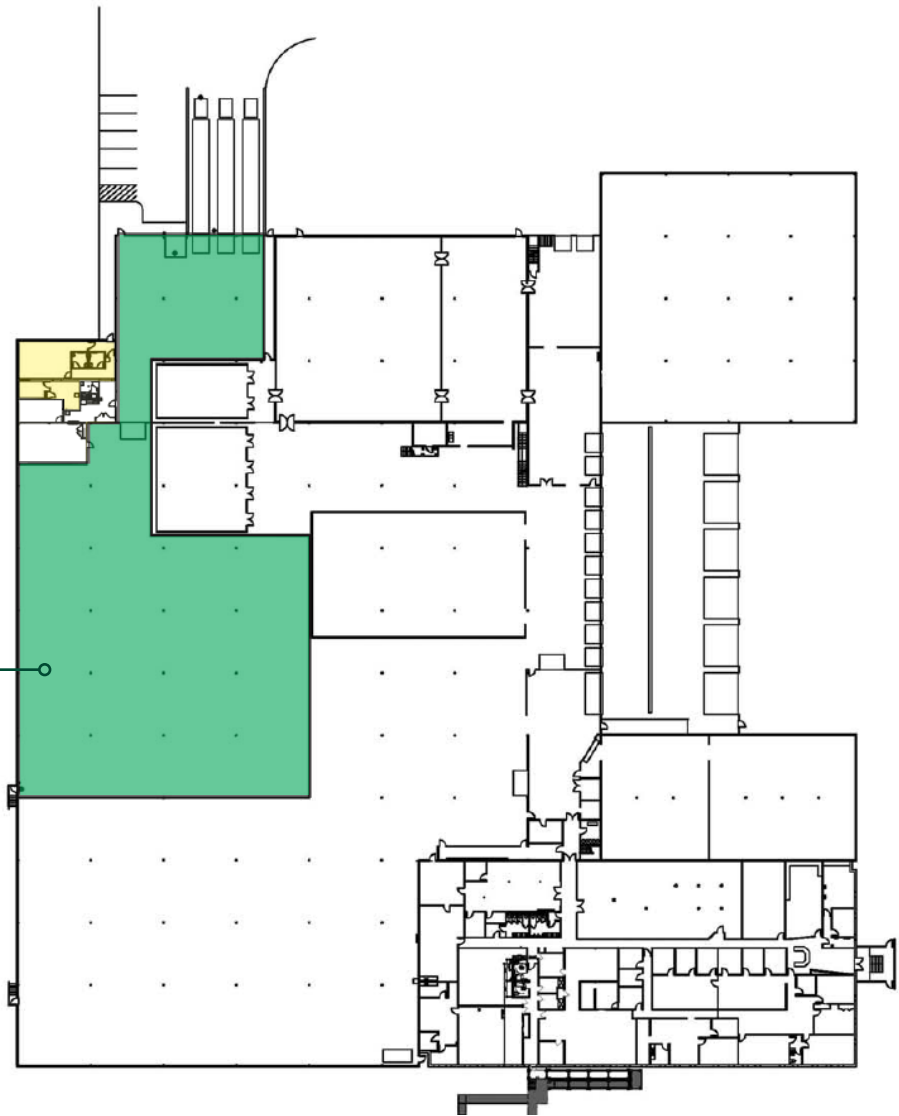
FOR SUBLEASE 2700 EAST 28TH STREET



FLOOR PLAN

AVAILABLE FOR SUBLEASE

- + 25,358 SF warehouse
- + 3 docks | 1 drive-in
- + Lease Rate: Negotiable



© 2022 CBRE, Inc. This information has been obtained from sources believed reliable. We have not verified it and make no guarantee, warranty or representation about it. Any projections, opinions, assumptions or estimates used are for example only and do not represent the current or future performance of the property. You and your advisors should conduct a careful, independent investigation of the property to determine to your satisfaction the suitability of the property for your needs. Photos herein are the property of their respective owners and use of these images without the express written consent of the owner is prohibited. CBRE and the CBRE logo are service marks of CBRE, Inc. and/or its affiliated or related companies in the United States and other countries. All other marks displayed on this document are the property of their respective owners.