

# Employment

106,4

North Rd  
CPD 547,41



SUBJECT



6,555 CPD

LOOP  
202

29,830 CPD

Elliot Rd

13,599 CPD

Limited  
Comm. (LC)  
23.5 AC

General  
Commercial (GC)  
67.1 AC

Mixed Use (MX)  
45.9 AC

facebook  
Data  
Center

# NEW EASTMARK RETAIL SHOPS

Elliot Road & Ellsworth Road - Northwest Corner  
Mesa, Arizona

88

28,466

Brian Gast  
602.682.8155  
brian.gast@velocityretail.com

Dean Ingram  
602.682.8155  
dean.ingram@velocityretail.com

Heather Prinsloo  
602.682.8108  
heather.prinsloo@velocityretail.com

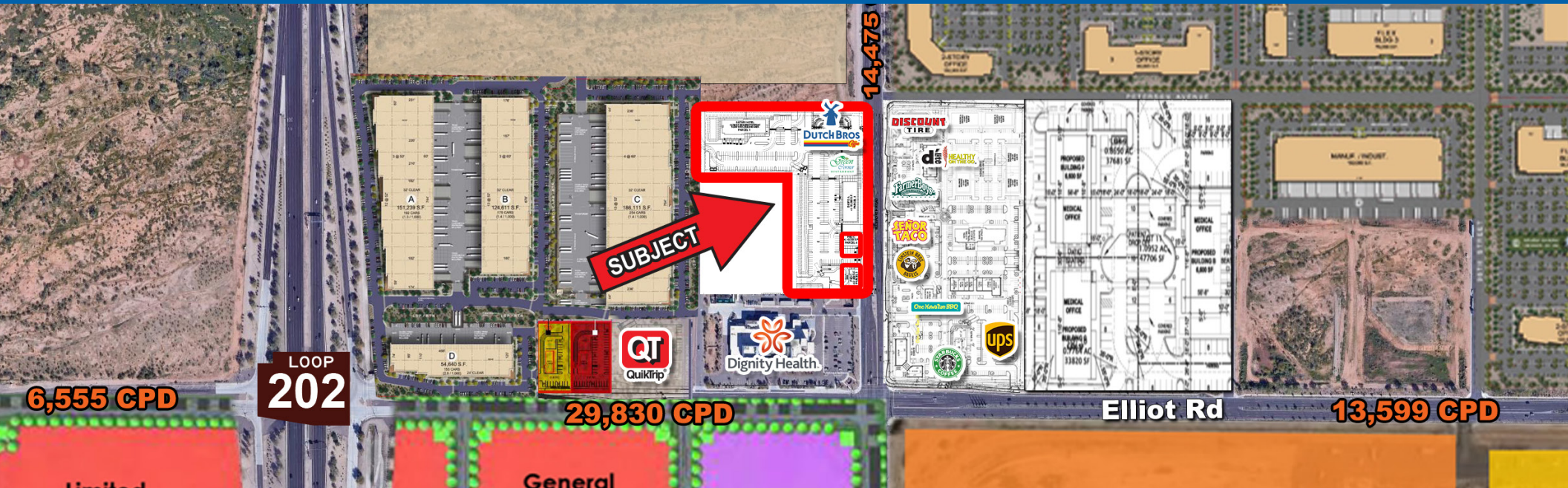
Parker Jones  
602.682.8182  
parker.jones@velocityretail.com





# NEW EASTMARK RETAIL SHOPS

Elliot Road & Ellsworth Road - Northwest Corner  
Mesa, Arizona



## ◆ SHOPS, DRIVE THRU APPROVED PAD, AND FREESTANDING PADS AVAILABLE

### Property Highlights

- Located in the heart of the Elliot Tech Corridor (Apple, Facebook, Google, Amazon)
- High traffic volume & strong household incomes.
- 1/2 Mile off of SanTan 202 freeway.
- Adjacent to Eastmark, a 15,000 home Master Planned Community
- Access to major highways and north of Phoenix-Mesa Gateway Airport (1.5m travelers annually)

### Traffic Counts

Elliot Road	29,830 CPD
Ellsworth Road	14,475 CPD
<b>Total</b>	<b>44,305 CPD</b>

### Demographics

	1 mi	3 mi	5 mi
Estimated Population	3,444	79,675	189,095
Estimated Households	1,124	28,481	71,824
Avg Household Income	\$89,846	\$107,968	\$93,057
Daytime Employees	454	9,026	34,100

Source: SitesUSA

### Nearby Tenants



Brian Gast  
602.682.8155  
brian.gast@velocityretail.com

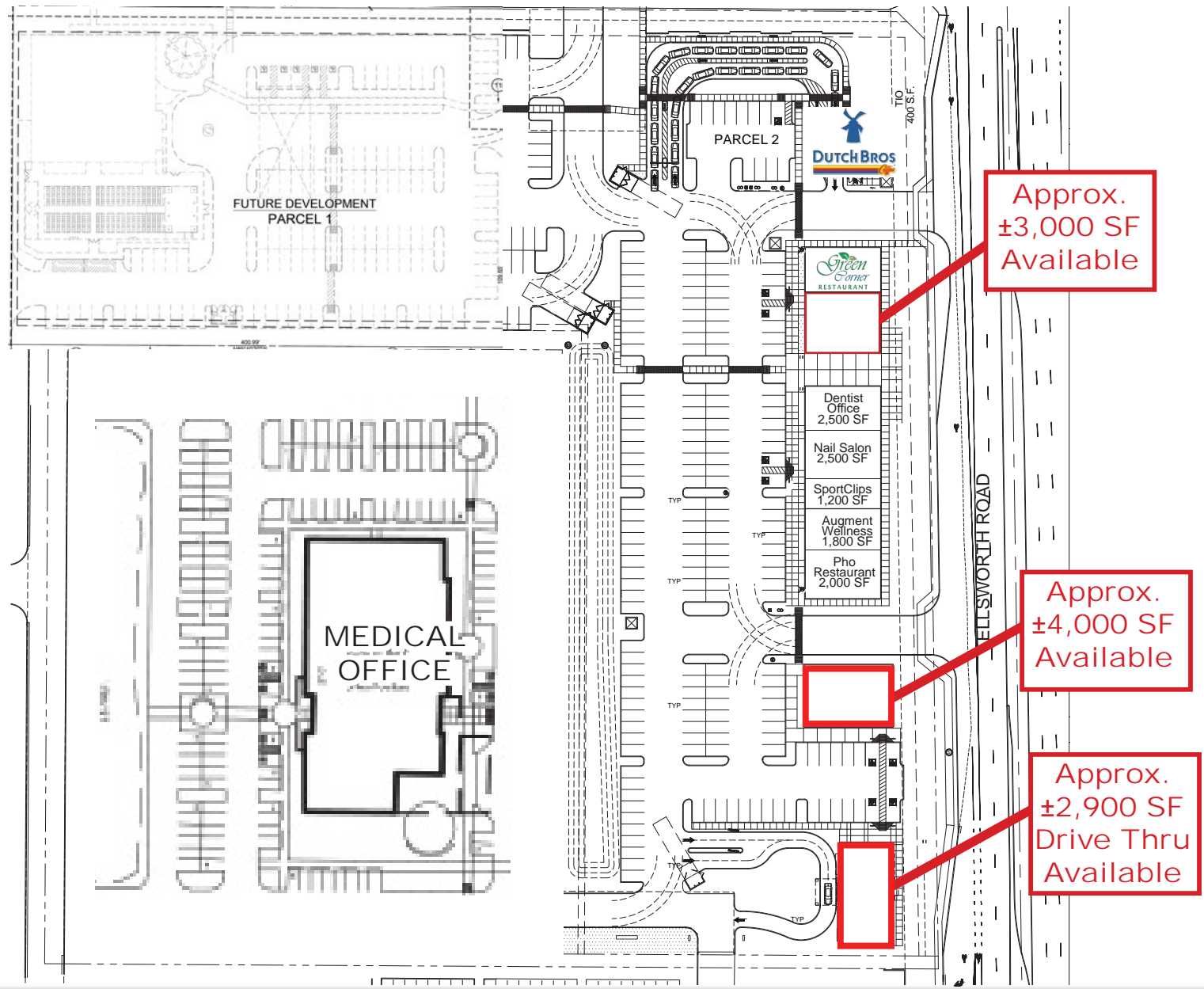
Dean Ingram  
602.682.8155  
dean.ingram@velocityretail.com

Heather Prinsloo  
602.682.8108  
heather.prinsloo@velocityretail.com

Parker Jones  
602.682.8182  
parker.jones@velocityretail.com



# CONCEPTUAL SITE PLAN



Brian Gast

602.682.8155

brian.gast@velocityretail.com

Dean Ingram

602.682.8155

dean.ingram@velocityretail.com

Heather Prinsloo

602.682.8108

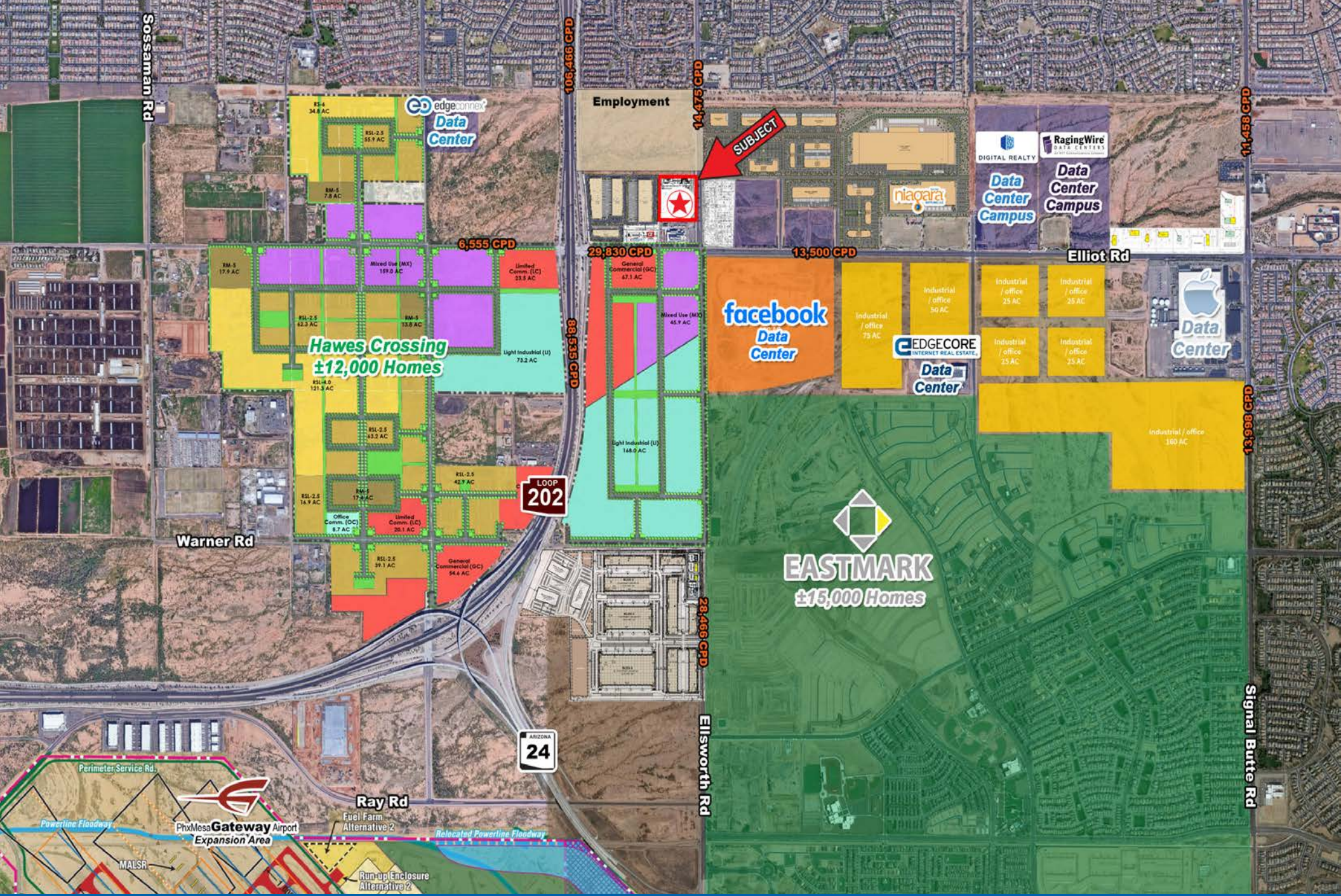
heather.prinsloo@velocityretail.com

Parker Jones

602.682.8182

parker.jones@velocityretail.com





Brian Gast  
602.682.8155  
brian.gast@velocityretail.com

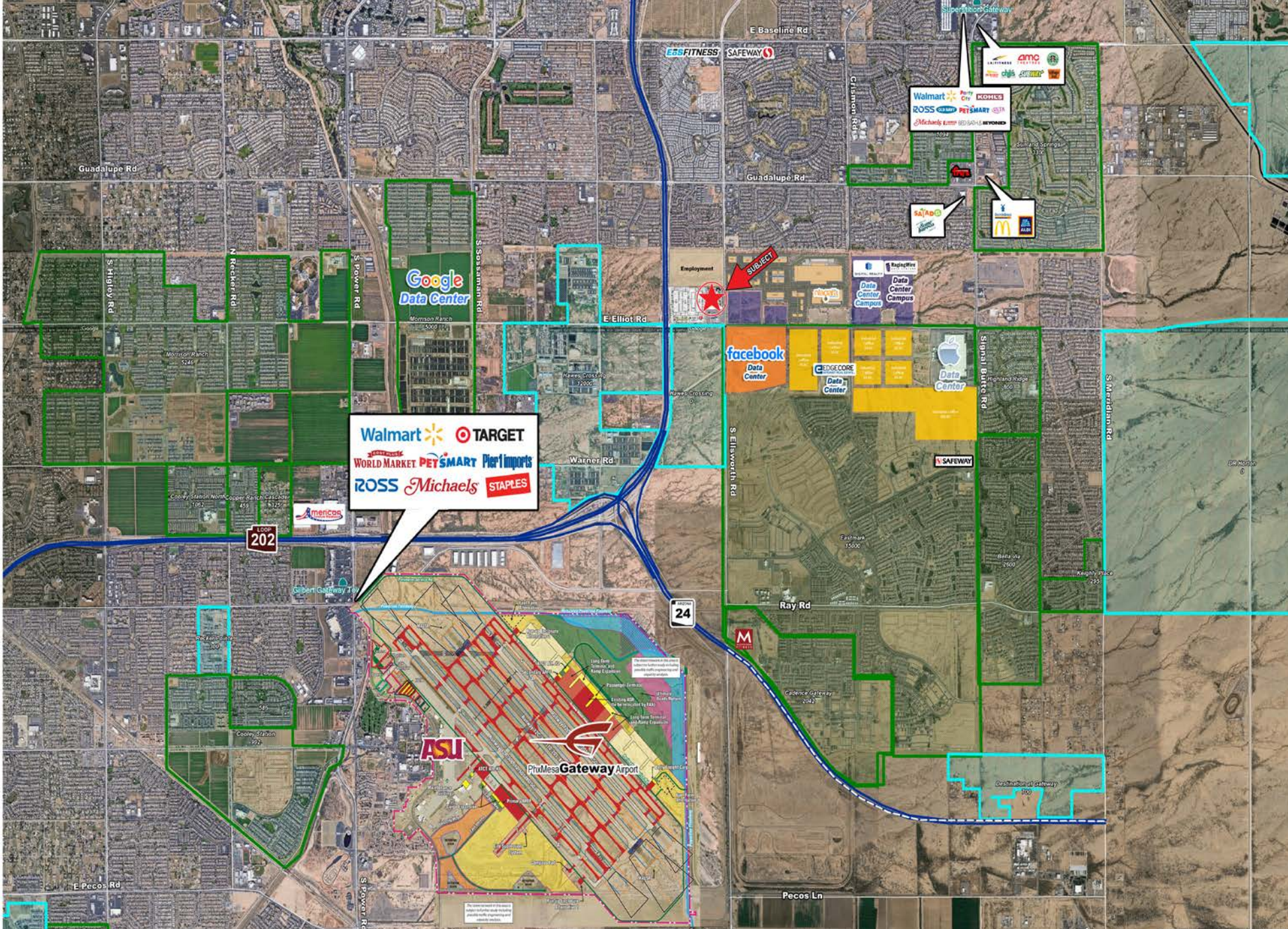
Dean Ingram  
602.682.8155  
dean.ingram@velocityretail.com

Heather Prinsloo  
602.682.8108  
heather.prinsloo@velocityretail.com

Parker Jones  
602.682.8182  
parker.jones@velocityretail.com







Brian Gast

602.682.8155

brian.gast@velocityretail.com

Dean Ingram

602.682.8155

dean.ingram@velocityretail.com

Heather Prinsloo

602.682.8108

heather.prinsloo@velocityretail.com

Parker Jones

602.682.8182

parker.jones@velocityretail.com





# DEMOGRAPHICS



## 2022 POPULATION

1 MILE: 3,444  
3 MILES: 79,675  
5 MILES: 189,095



## MEDIAN HOUSEHOLD INCOME

1 MILE: \$84,846  
3 MILES: \$107,968  
5 MILES: \$93,057



## POPULATION GROWTH PROJECTION 2022 - 2027

1 MILE: 2.7%  
3 MILES: 4.4%  
5 MILES: 3.4%



## TOTAL BUSINESSES

1 MILE: 122  
3 MILES: 1,508  
5 MILES: 4,692



## 2022 TOTAL HOUSEHOLDS

1 MILE: 1,124  
3 MILES: 28,481  
5 MILES: 71,824



## NUMBER OF EMPLOYEES

1 MILE: 603  
3 MILES: 8,641  
5 MILES: 34,219



## MEDIAN HOME VALUE

1 MILE: \$266,872  
3 MILES: \$298,411  
5 MILES: \$257,519

Brian Gast  
602.682.8155  
brian.gast@velocityretail.com

Dean Ingram  
602.682.8155  
dean.ingram@velocityretail.com

Heather Prinsloo  
602.682.8108  
heather.prinsloo@velocityretail.com

Parker Jones  
602.682.8182  
parker.jones@velocityretail.com







**VELOCITY  
RETAILGROUP**

2415 East Camelback Road, Suite 400  
Phoenix, Arizona 85016  
**602.682.8100**

### **Brian Gast**

602.682.8155  
brian.gast@velocityretail.com

### **Heather Prinsloo**

602.682.8108  
heather.prinsloo@velocityretail.com

### **Dean Ingram**

602.682.8155  
dean.ingram@velocityretail.com

### **Parker Jones**

602.682.8182  
parker.jones@velocityretail.com

The information contained in this brochure has been obtained from sources believed reliable. We have not verified the information, and make no guarantee, warranty or representation about it. Any financial projections, assumptions or estimates used are for example only and do not represent the current or future performance of the property. We recommend that you and/or your advisors conduct a complete analysis of the property and make your own determination on the suitability of the property for your specific needs. Accelerated Development Services and the ADS logo are service marks of Velocity Retail Group, LLC. All other marks displayed in this document are the property of their respective owners.



**VELOCITY  
RETAILGROUP**