

OFFICE SPACE FOR LEASE



18 IMPERIAL PLACE-UNIT B501 & B51A

Providence, RI 02903

WHITNEY RUGG

Sales Associate
401.751.3200 x3302
whitney@mgcommercial.com

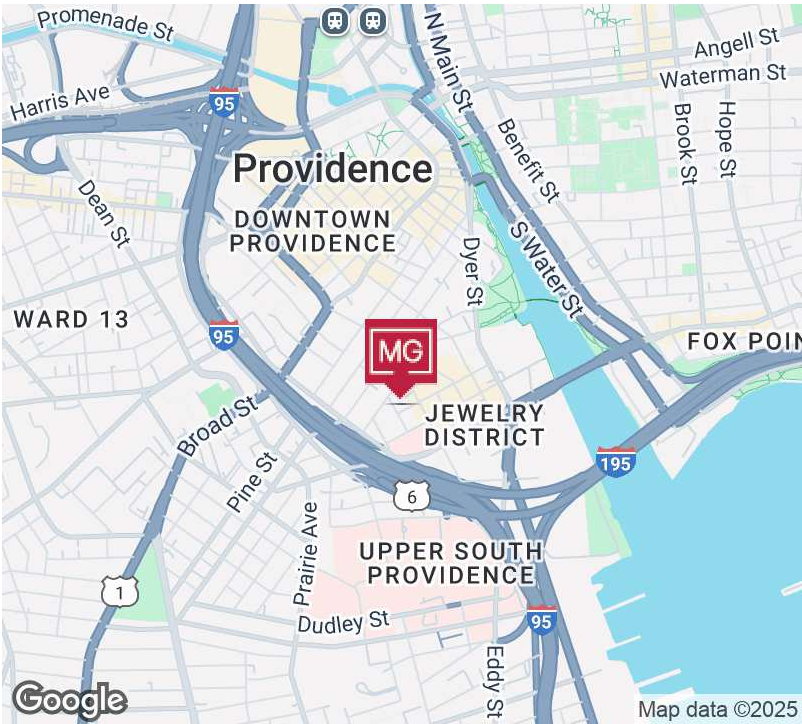
LEEDS MITCHELL IV, SIOR

Principal Broker, Partner
401.751.3200 x3307
leeds@mgcommercial.com

MG COMMERCIAL

365 Eddy Street, Penthouse Suite
Providence, RI 02903
401.751.3200 | mgcommercial.com

PROPERTY SUMMARY



PROPERTY DESCRIPTION

MG Commercial is pleased to bring to market 2 completely renovated 1st floor office suited in this well established mixed-use building. The Courtyard suite is 3,244 SF and offers large windows over looking the tranquil courtyard of the Imperial Knife complex. This suite has large open work areas, high ceilings, private office space and a custom kitchen/breakroom area. The second 1,668 SF suite was just renovated and includes 3 private offices, large kitchen area, full bathroom and glass throughout. Both suites are in move-in condition.

PROPERTY HIGHLIGHTS

- 2 completely renovated office suites, move-in ready
- Dedicated parking at no additional charge
- Functional floor plans
- Outdoor courtyard

LOCATION DESCRIPTION

18 Imperial Place is well located in the Jewelry District of Providence. This location offers immediate access to Routes 95 & 195 and is walking distance to many restaurants and cafés in the area. Downtown Providence is also a short 10-minute walk away.

OFFERING SUMMARY

Lease Rate:	\$22.50 SF/yr (MG)
Available SF:	3,244 SF
Building Size:	77,952 SF

SPACES	LEASE RATE	SPACE SIZE
Unit B501 & B51A	\$22.50 SF/yr	3,244 SF

WHITNEY RUGG

Sales Associate
401.751.3200 x3302
whitney@mgcommercial.com

LEEDS MITCHELL IV, SIOR

Principal Broker, Partner
401.751.3200 x3307
leeds@mgcommercial.com

365 Eddy Street, Penthouse Suite
Providence, RI 02903
mgcommercial.com

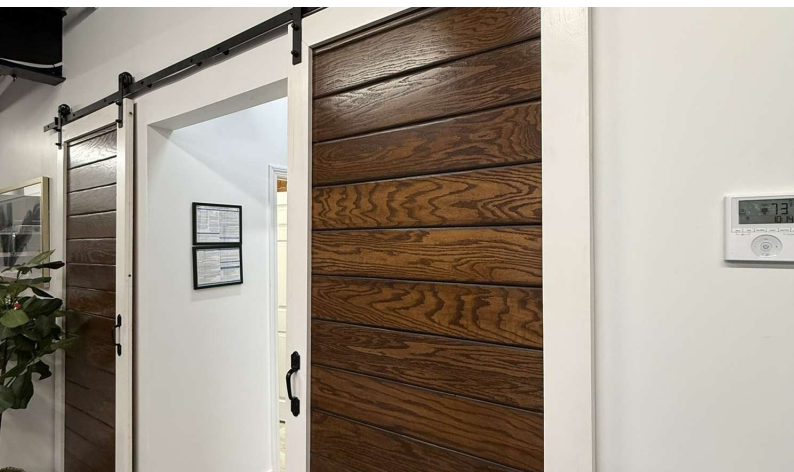
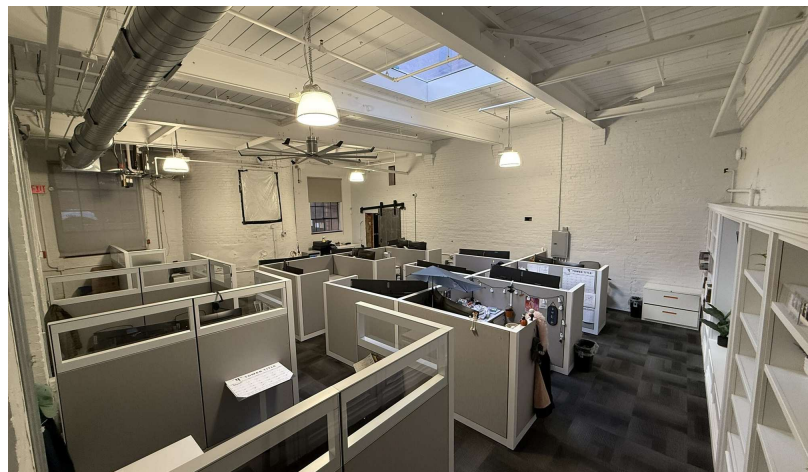
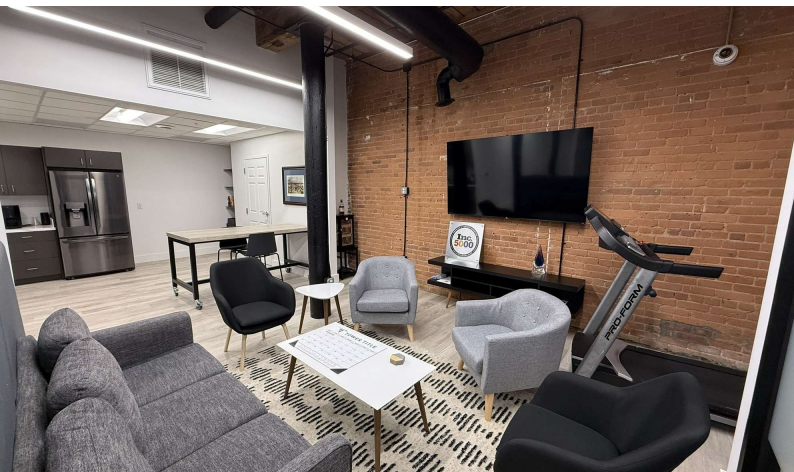


18 IMPERIAL PLACE-UNIT B501 & B51A

Providence, RI 02903

OFFICE SPACE FOR LEASE

ADDITIONAL PHOTOS



WHITNEY RUGG

Sales Associate
401.751.3200 x3302
whitney@mgcommercial.com

LEEDS MITCHELL IV, SIOR

Principal Broker, Partner
401.751.3200 x3307
leeds@mgcommercial.com

365 Eddy Street, Penthouse Suite
Providence, RI 02903
mgcommercial.com

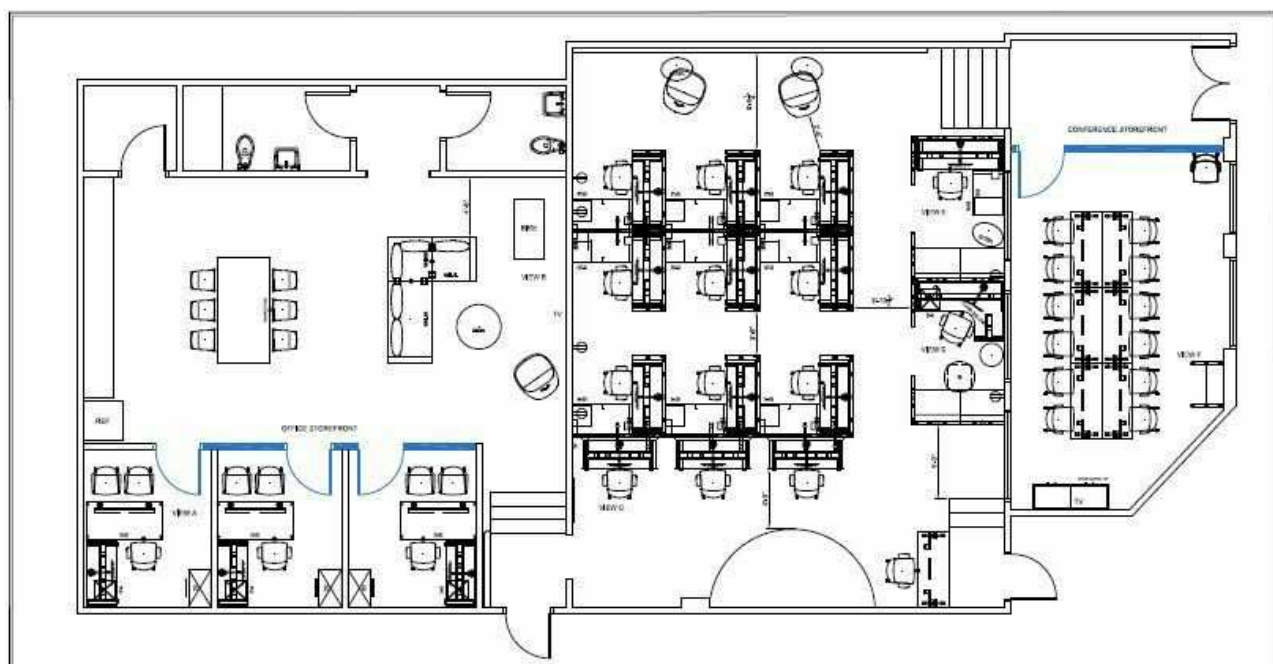


This information has been secured from sources we believe to be reliable, but we make no representation or warranties, expressed or implied, as to the accuracy of the information. All references to age, sq. footage, income, and expenses are approximate. Buyers should conduct their own independent investigations and rely only on those results.

FLOOR PLANS



Units 1B & 1C



Units B501 & B51A

WHITNEY RUGG

Sales Associate
401.751.3200 x3302
whitney@mgcommercial.com

LEEDS MITCHELL IV, SIOR

Principal Broker, Partner
401.751.3200 x3307
leeds@mgcommercial.com

365 Eddy Street, Penthouse Suite
Providence, RI 02903
mgcommercial.com

