



1520 13th Ave

Columbus, Georgia 31901

Property Highlights

- - +/- 8,139 SF freestanding building
- - Parking available for employees and customers
- - Spacious work areas
- - Flex space
- - Storage shed

Offering Summary

Sale Price:	\$795,000
Building Size:	+/- 9,684 SF
Available SF:	+/- 9,648 SF
Lot Size:	0.42 Acres

Demographics 0.3 Miles 0.5 Miles 1 Mile

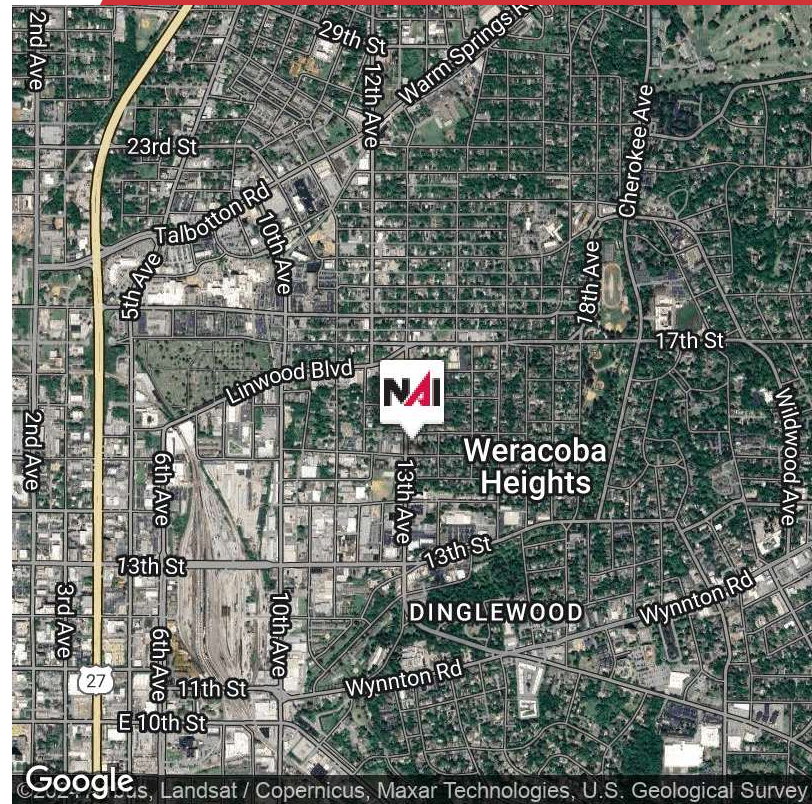
	0.3 Miles	0.5 Miles	1 Mile
Total Households	468	993	4,311
Total Population	1,008	2,077	8,891
Average HH Income	\$44,221	\$45,593	\$54,914

For More Information

Rem Brady

O: 706 660 5418 x1007

rbrady@g2cre.com | GA #353461



Offering Summary

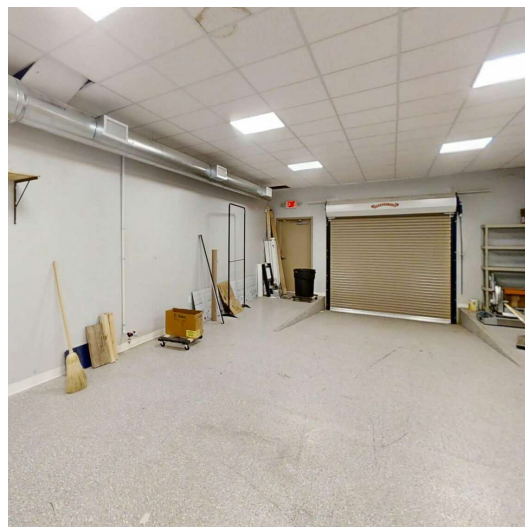
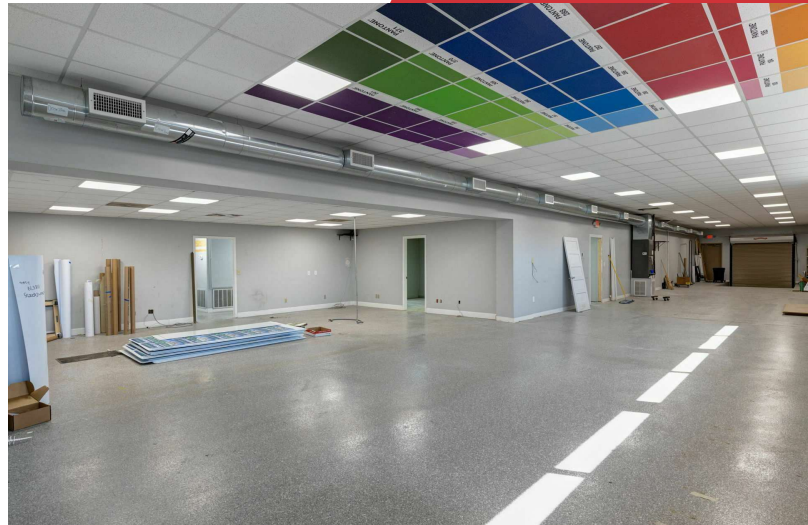
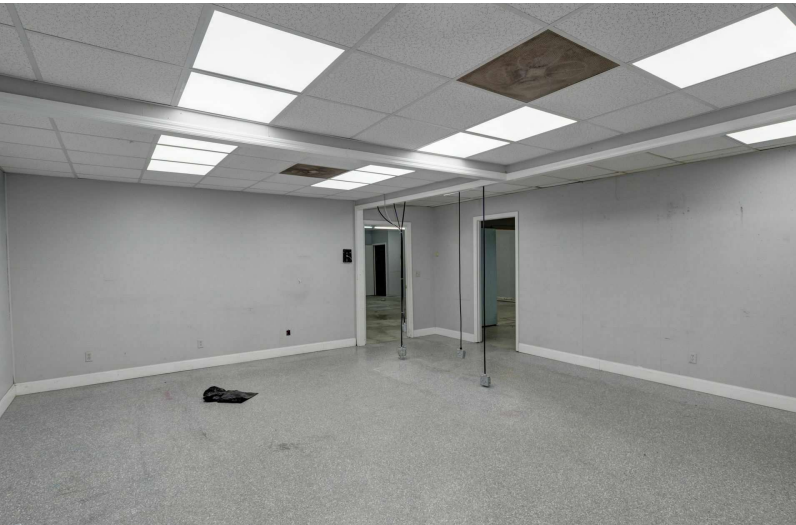
Sale Price:	\$795,000
Building Size:	+/- 9,684 SF
Available SF:	+/- 9,684 SF
Lot Size:	0.42 Acres
Number of Units:	1
Price / SF:	\$82.09
Year Built:	1952
Zoning:	GC: General Commercial

Property Overview

Previously used as a printing shop, this property is a prime investment opportunity in the heart of Columbus, Georgia. This +/- 8,139 SF flex space is a freestanding building with ample parking available for employees and customers. The building includes a reception/lobby area, several spacious work areas, a warehouse complete with a loading dock, and an outdoor shed available for additional storage. With a GC zoning, this property is perfect to accommodate a wide range of retail ventures.

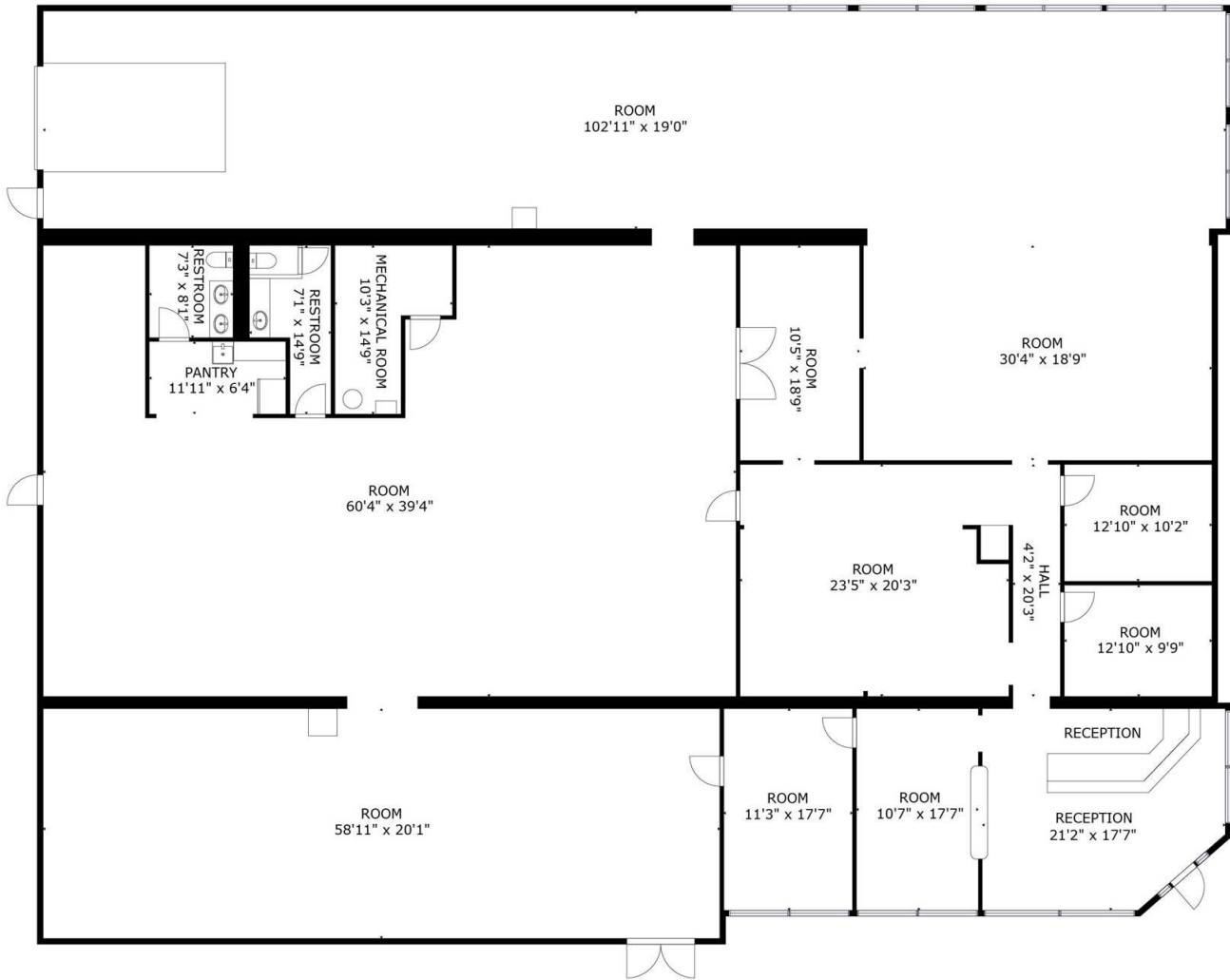
For showings, please contact the listing broker.

We obtained the information above from sources we believe to be reliable. However, we have not verified its accuracy and make no guarantee, warranty or representation about it. It is submitted subject to the possibility of errors, omissions, change of price, rental or other conditions, prior sale, lease or financing, or withdrawal without notice. We include projections, opinions, assumptions or estimates for example only, and they may not represent current or future performance of the property. You and your tax and legal advisors should conduct your own investigation of the property and transaction.



We obtained the information above from sources we believe to be reliable. However, we have not verified its accuracy and make no guarantee, warranty or representation about it. It is submitted subject to the possibility of errors, omissions, change of price, rental or other conditions, prior sale, lease or financing, or withdrawal without notice. We include projections, opinions, assumptions or estimates for example only, and they may not represent current or future performance of the property. You and your tax and legal advisors should conduct your own investigation of the property and transaction.

Post Office Box 4529
Columbus, GA 31904
706 660 5418 tel
G2cre.com

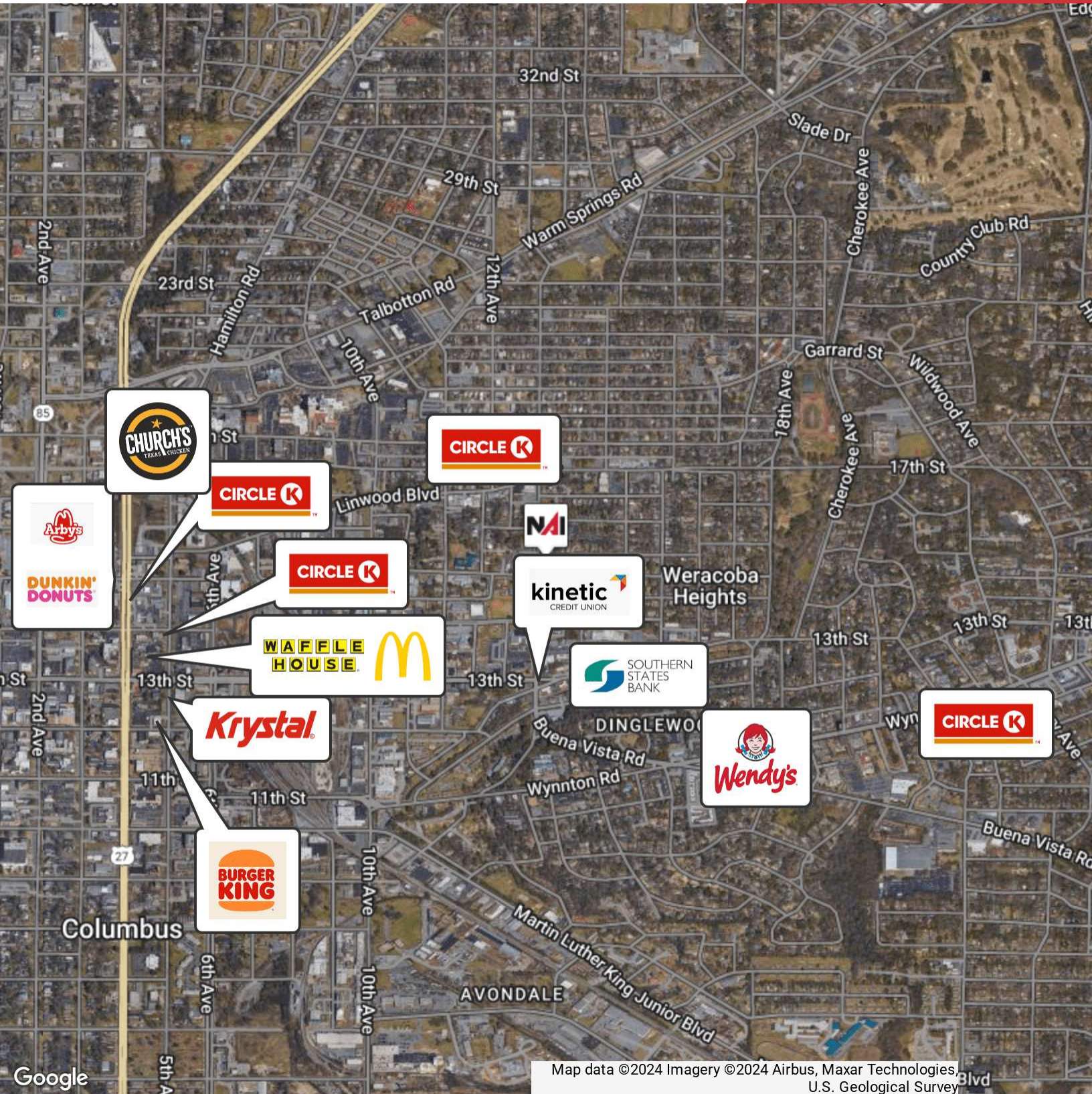


GROSS INTERNAL AREA
TOTAL: 8139 sq.ft

SIZES AND DIMENSIONS ARE APPROXIMATE, ACTUAL MAY VARY.



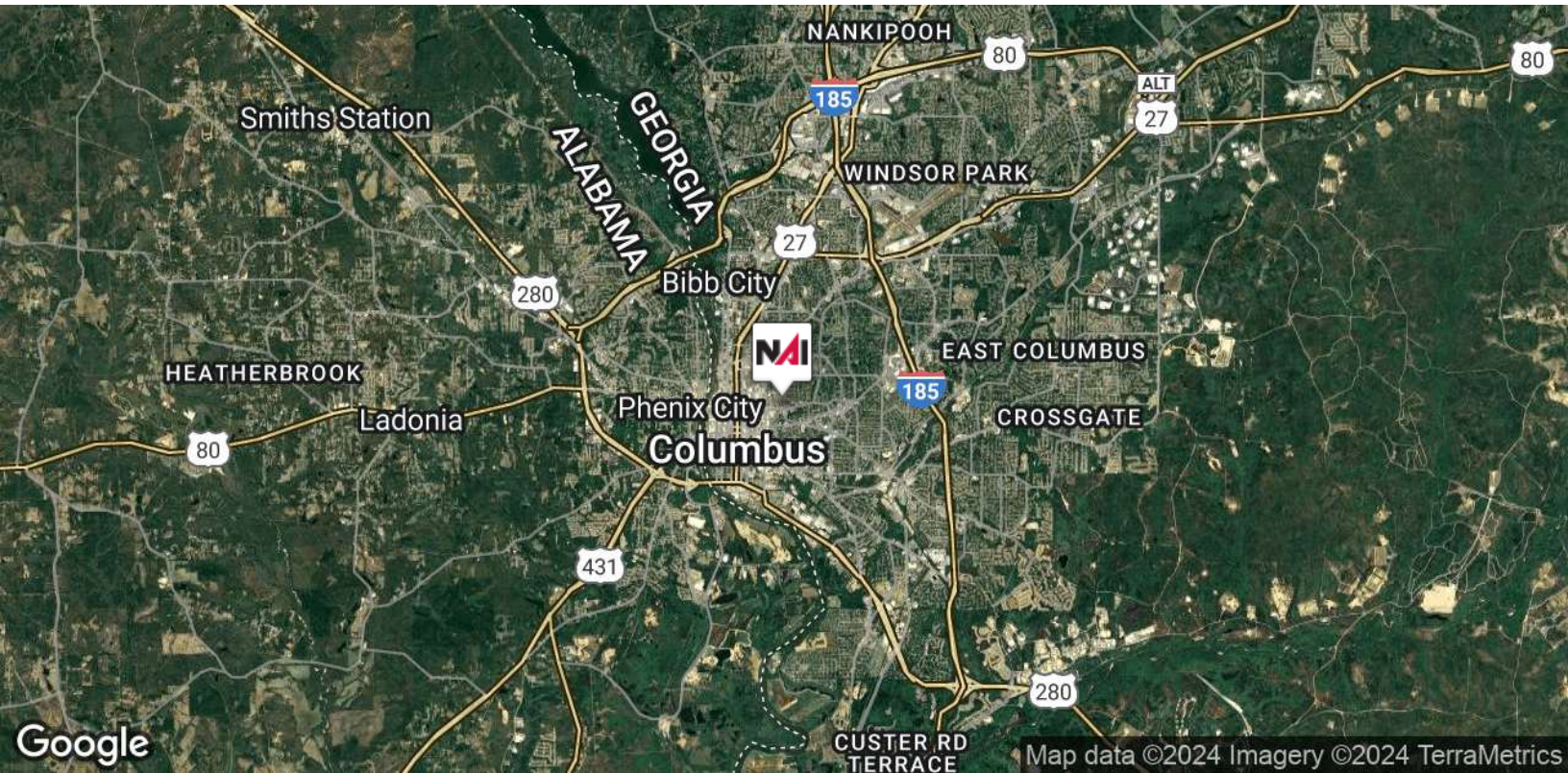
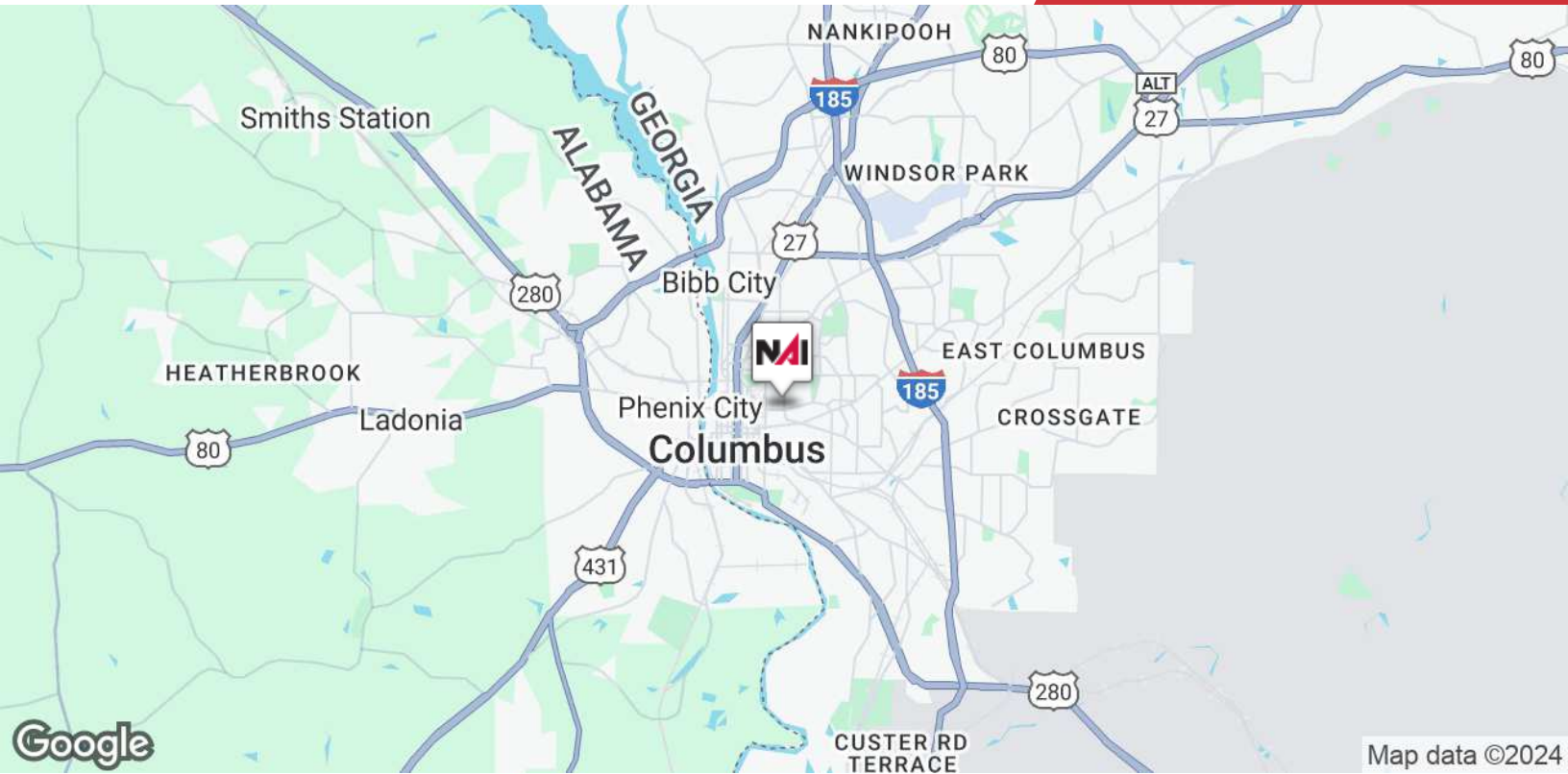
FLOOR 1



Map data ©2024 Imagery ©2024 Airbus, Maxar Technologies, U.S. Geological Survey

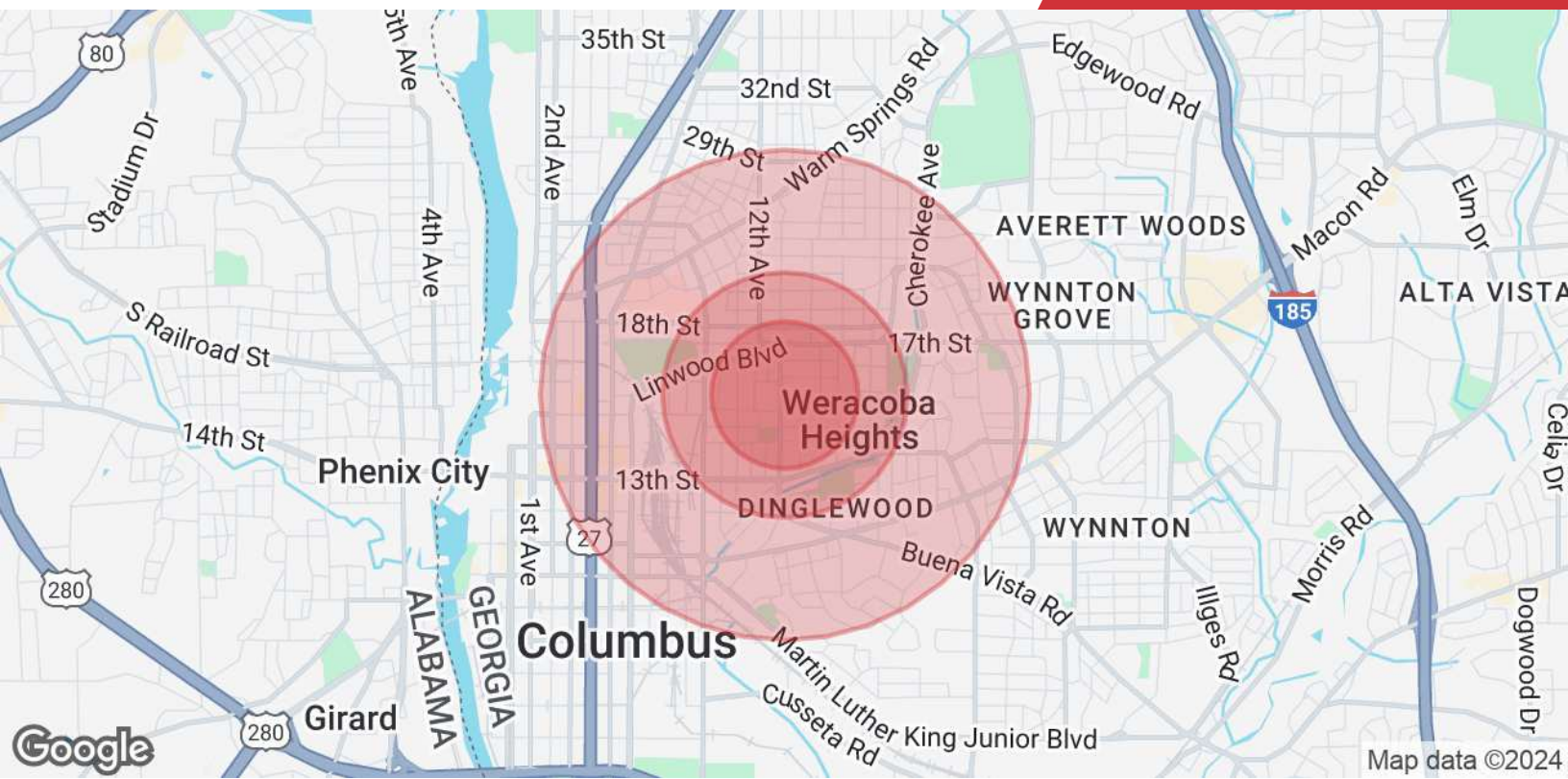
We obtained the information above from sources we believe to be reliable. However, we have not verified its accuracy and make no guarantee, warranty or representation about it. It is submitted subject to the possibility of errors, omissions, change of price, rental or other conditions, prior sale, lease or financing, or withdrawal without notice. We include projections, opinions, assumptions or estimates for example only, and they may not represent current or future performance of the property. You and your tax and legal advisors should conduct your own investigation of the property and transaction.

Post Office Box 4529
Columbus, GA 31904
706 660 5418 tel
G2cre.com



We obtained the information above from sources we believe to be reliable. However, we have not verified its accuracy and make no guarantee, warranty or representation about it. It is submitted subject to the possibility of errors, omissions, change of price, rental or other conditions, prior sale, lease or financing, or withdrawal without notice. We include projections, opinions, assumptions or estimates for example only, and they may not represent current or future performance of the property. You and your tax and legal advisors should conduct your own investigation of the property and transaction.

Post Office Box 4529
Columbus, GA 31904
706 660 5418 tel
G2cre.com



Population

	0.3 Miles	0.5 Miles	1 Mile
Total Population	1,008	2,077	8,891
Average Age	41	42	40
Average Age (Male)	41	41	39
Average Age (Female)	42	42	41

Households & Income

	0.3 Miles	0.5 Miles	1 Mile
Total Households	468	993	4,311
# of Persons per HH	2.2	2.1	2.1
Average HH Income	\$44,221	\$45,593	\$54,914
Average House Value	\$174,323	\$184,941	\$221,251

Demographics data derived from AlphaMap