

Available  
For Lease

6,990 SF  
10% Office  
90% Warehouse

ELGIN COMMERCE PARK

**2531 Technology Drive**

Elgin, Illinois 60124

## PROPERTY DETAILS

BUILDING SIZE	59,180 SF
AVAILABLE	6,990 SF - UNIT 314
OFFICE	10% OFFICE 90% WAREHOUSE
CLEAR HEIGHT	18'
CONSTRUCTION	REINFORCED CONCRETE
LOADING	ENCLOSED DOCK (SHARED) POTENTIAL TO ADD DRIVE-IN DOOR
SPRINKLER	DRY

## FEATURES

- PRIVATE ACCESS/ENTRY
- HEAVY PARKING CAPACITY
- DRIVE TIME TO O'HARE 25 MINUTES

Owned & Managed by:



## Contact

Steve Bass

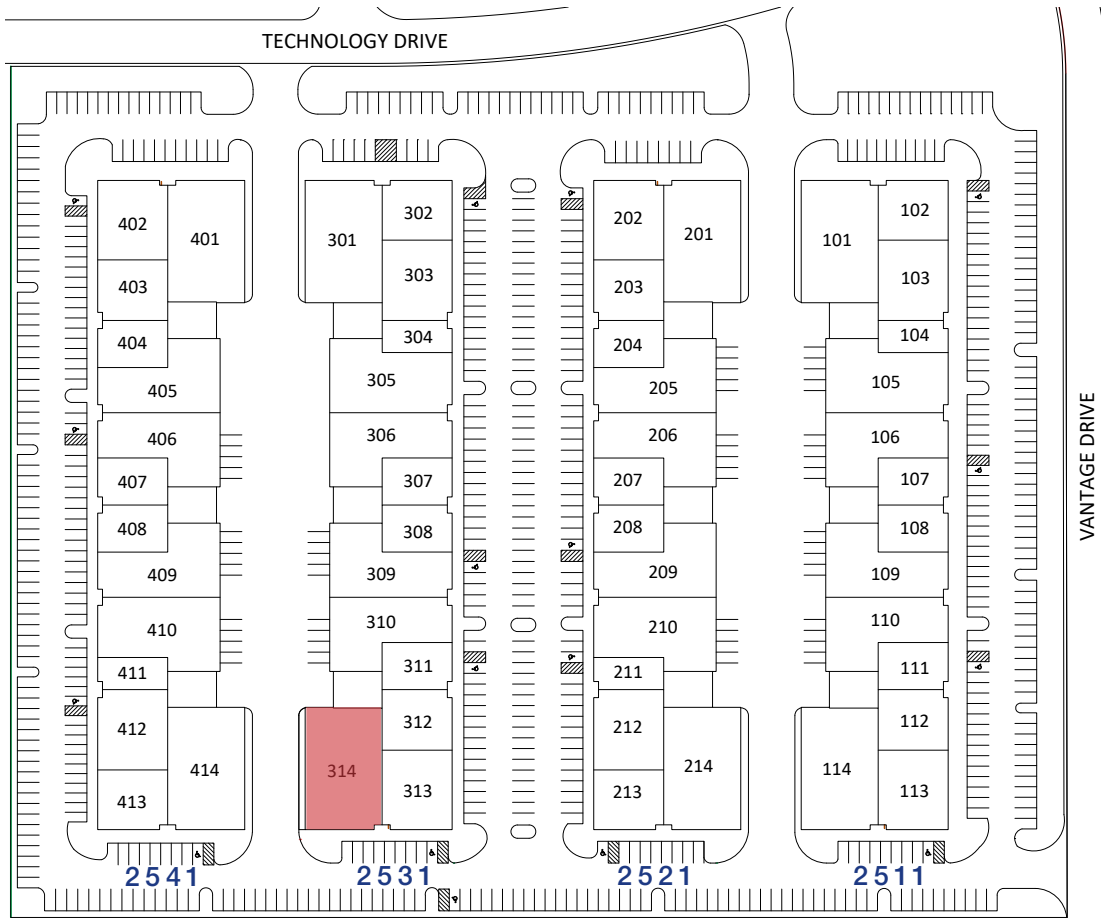
+1 630 317 0738  
sbass@hiffman.com

Jack Brennan

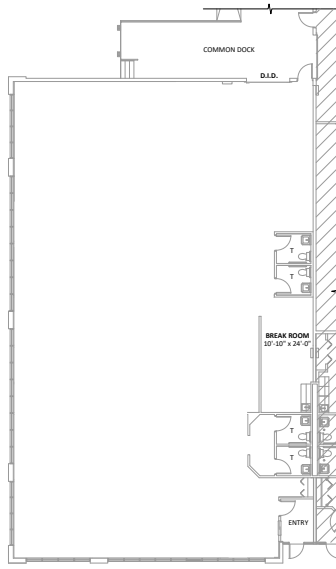
+1 630 317 0754  
jbrennan@hiffman.com

One Oakbrook Terrace  
Suite 600  
Oakbrook Terrace, Illinois 60181  
+1 630 932 1234

NO WARRANTY OR REPRESENTATION, EXPRESS OR IMPLIED, IS MADE AS TO THE ACCURACY OF THE INFORMATION CONTAINED HEREIN, AND THE SAME IS SUBMITTED SUBJECT TO ERRORS, OMISSIONS, CHANGE OF PRICE, RENTAL OR OTHER CONDITIONS, PRIOR SALE, LEASE OR FINANCING, OR WITHDRAWAL WITHOUT NOTICE, AND OF ANY SPECIAL LISTING CONDITIONS IMPOSED BY OUR PRINCIPALS NO WARRANTIES OR REPRESENTATIONS ARE MADE AS TO THE CONDITION OF THE PROPERTY OR ANY HAZARDS CONTAINED THEREIN ARE ANY TO BE IMPLIED.



EXISTING PLAN  
90% WAREHOUSE  
10% OFFICE



## HIGHLIGHTS & FEATURES

- Private access/entry
- 18' clear height
- Warehouse - fully covered shared loading dock access
- AT&T Comcast - high speed and fiberoptic services available
- Walking distance to dining, hotels, day care and other amenities
- PACE Express - six (6) new bus routes at I-90 and Randall Roads station

Owned & Managed by:



## Contact

Steve Bass  
+1 630 317 0738  
sbass@hiffman.com

Jack Brennan  
+1 630 317 0754  
jbrennan@hiffman.com



