



Bee Bayou

Bee Bayou Road
Rayville, LA 71282



SITE INFORMATION

ACRES AVAILABLE:

273.46 Acres

PROPERTY TYPE:

Industrial with Rail Access

TERRAIN:

Flat

SUB DIVIDABLE:

Yes

PRIOR/CURRENT USE:

Agricultural

OWNER:

George B Franklin and Son, Inc.

NEAREST MSA:

Monroe
Population: 178,864
Distance: 14 miles

Alexandria
Population: 154,872
Distance: 62 miles

COORDINATES:

32.470269, -91.691487

UTILITIES

ELECTRICITY:

Entergy

NATURAL GAS:

ATMOS

WATER:

River Road Waterworks

SEWER:

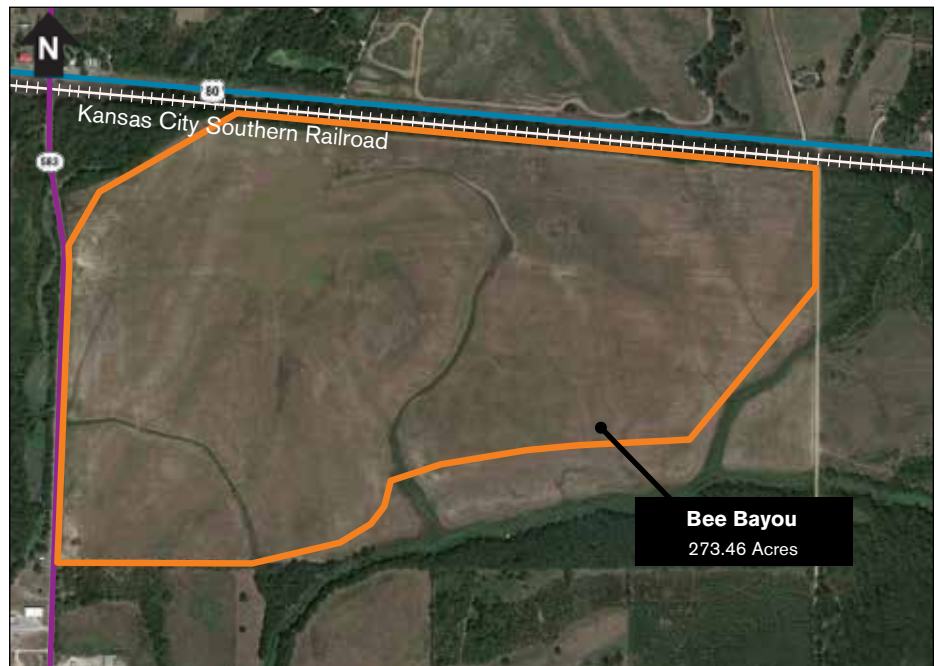
Town of Rayville

TELECOM:

AT&T

FIBER OPTIC:

AT&T



TRANSPORTATION LOGISTICS

INTERSTATE:

I-20
Distance: 1.2 miles

HIGHWAY:

US-80
Distance: 0.1 mile

RAIL:

Kansas City Southern Railroad
Distance: Adjacent to Site

AIRPORT:

Monroe Regional Airport (MLU)
Distance: 24.2 miles

PORT:

Greater Ouachita Port
Distance: 21.7 miles



Site Located in Richland Parish

FIND OUT MORE: OpportunityLouisiana.com
800.450.8115



Bee Bayou

Bee Bayou Road
Rayville, LA 71282

