

[CLICK HERE FOR AERIAL TOUR](#)



I-94

EAST LOGISTICS CENTER

11435 Hudson Rd | Woodbury, MN 55129



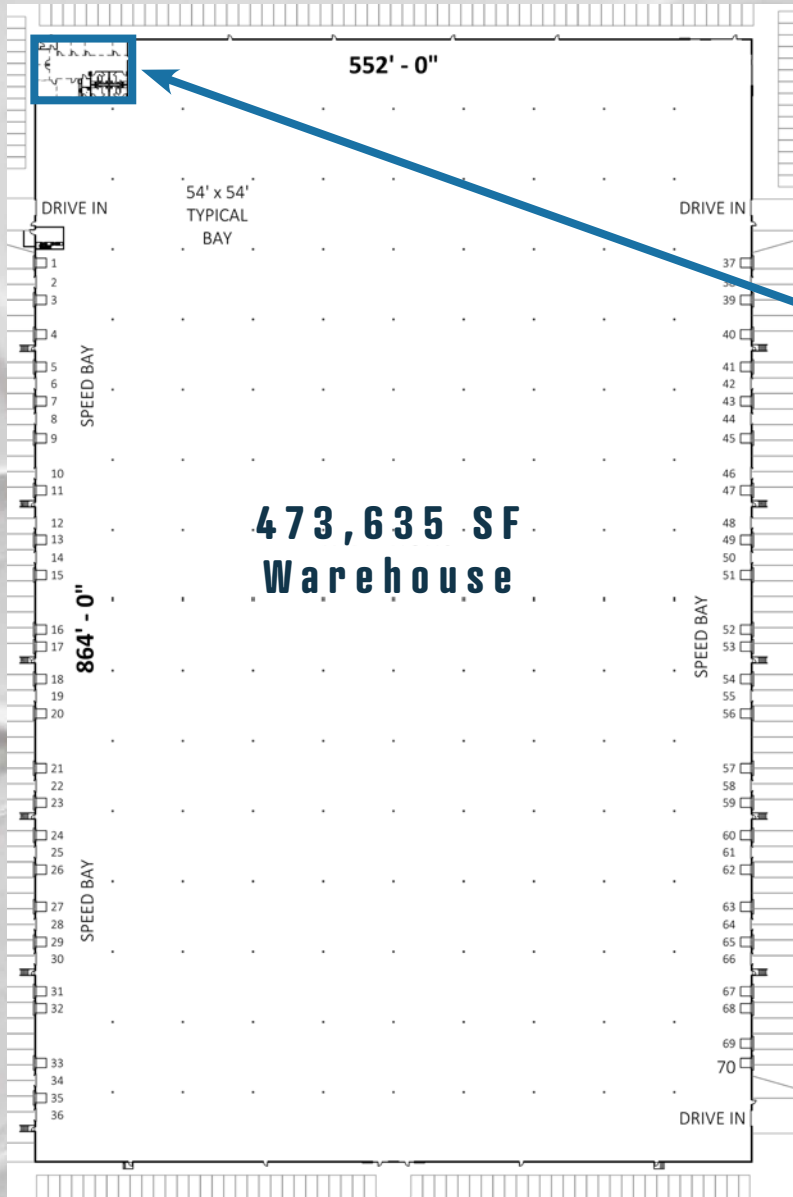
SITE PLAN



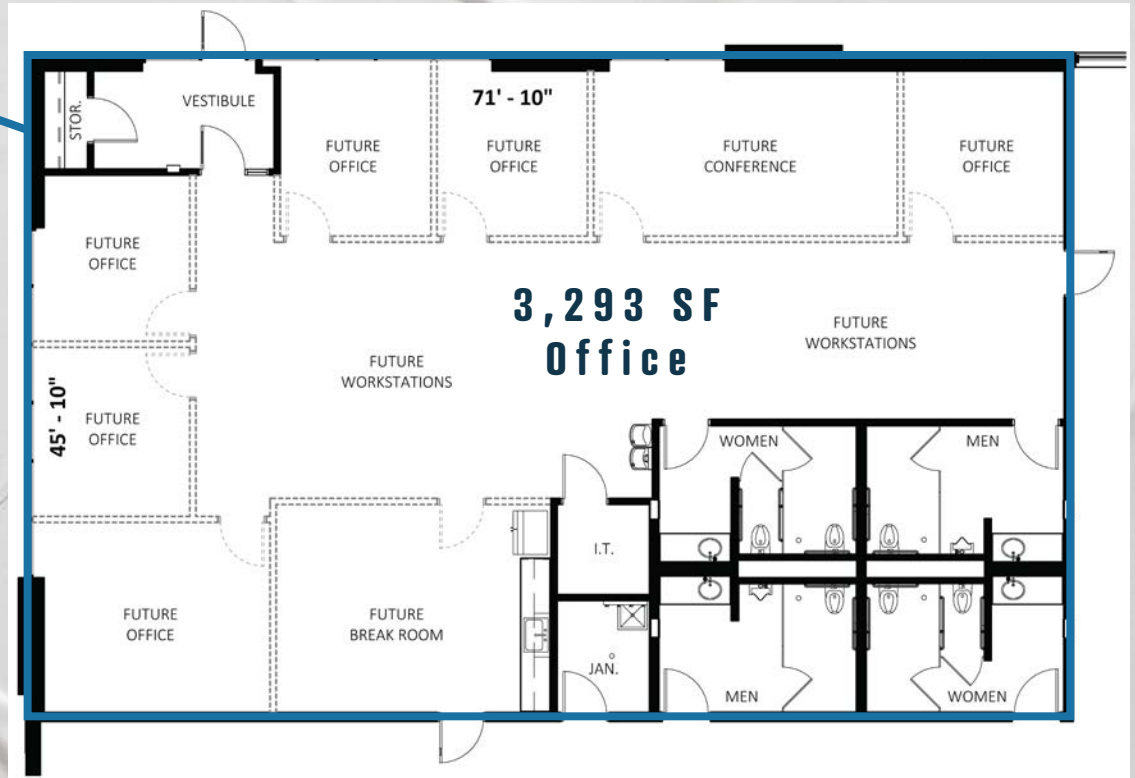
- SITE AREA:** 33.7 Acres
- TOTAL BUILDING SIZE:**
476,928 SF TOTAL:
 - 3,293 SF OFFICE
 - 473,635 SF WAREHOUSE
- PARKING STALLS:** 380 (0.79 stalls/1,000 SF)
- TRAILER PARKING:** 99
- CLEAR HEIGHT:** 36'
- LOADING:**
(70) 9'x10' Docks (expandable to 88);
3 Drive-ins (12' x 16')
- COLUMN SPACING:** 54' x 54' with 60' speed bay
- SPRINKLER:** ESFR (Class I through IV commodities)
- POWER:** One (1) 3,000 Amp, 277/480 V, 3-phase, 4-wire service
- LIGHTING:**
30,000 Lumen LED Fixtures (30 FC @30" AFF) on motion sensors throughout warehouse
- LEASE RATE:** Negotiable
- ESTIMATED 2025 TAX/CAM:**
Tax: \$1.67 PSF (*not fully assessed)
CAM: \$0.67 PSF
Total: \$2.31 PSF



SITE PLAN



OFFICE FLOOR PLAN



Photos



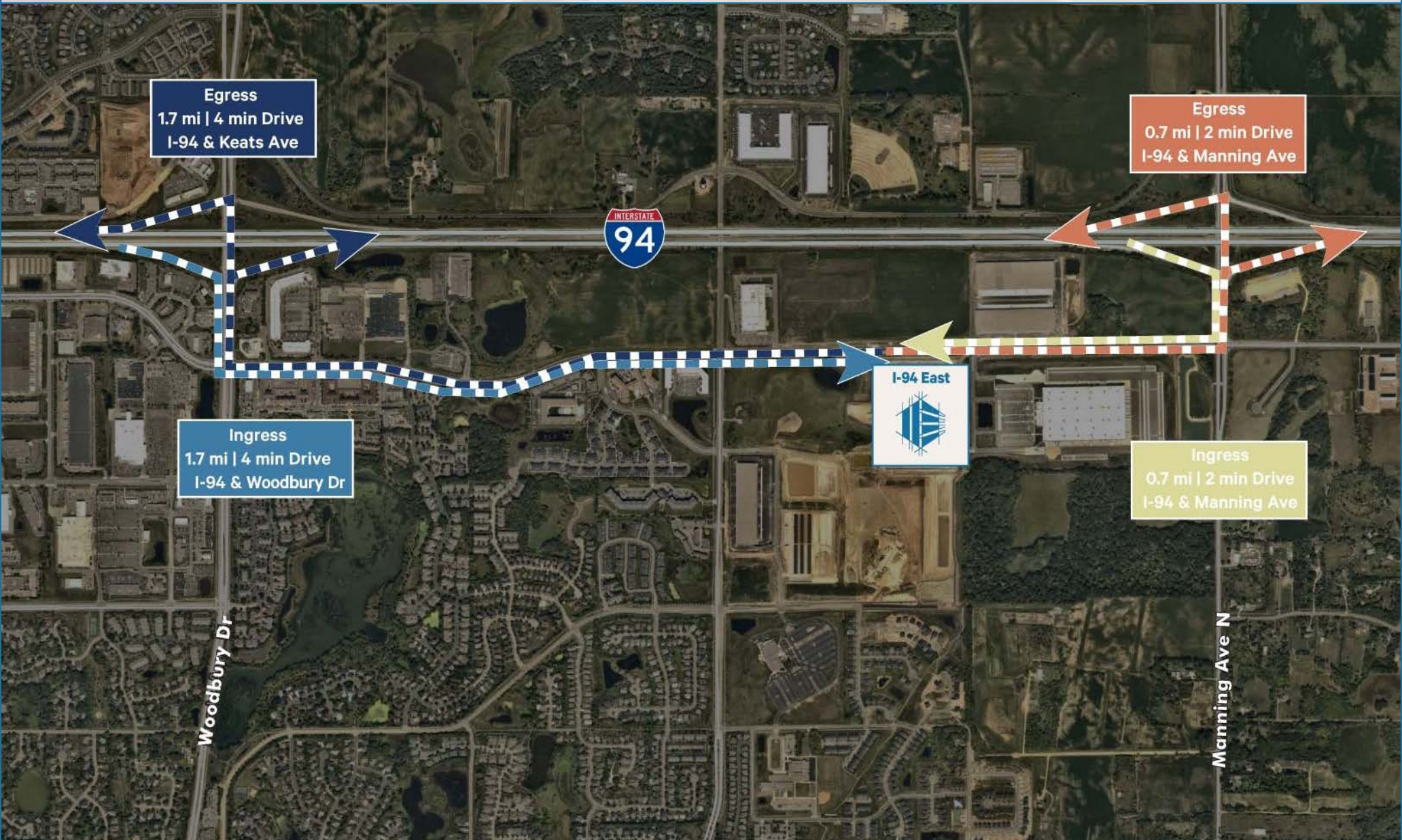
Photos



Site



ACCESSIBILITY MAP



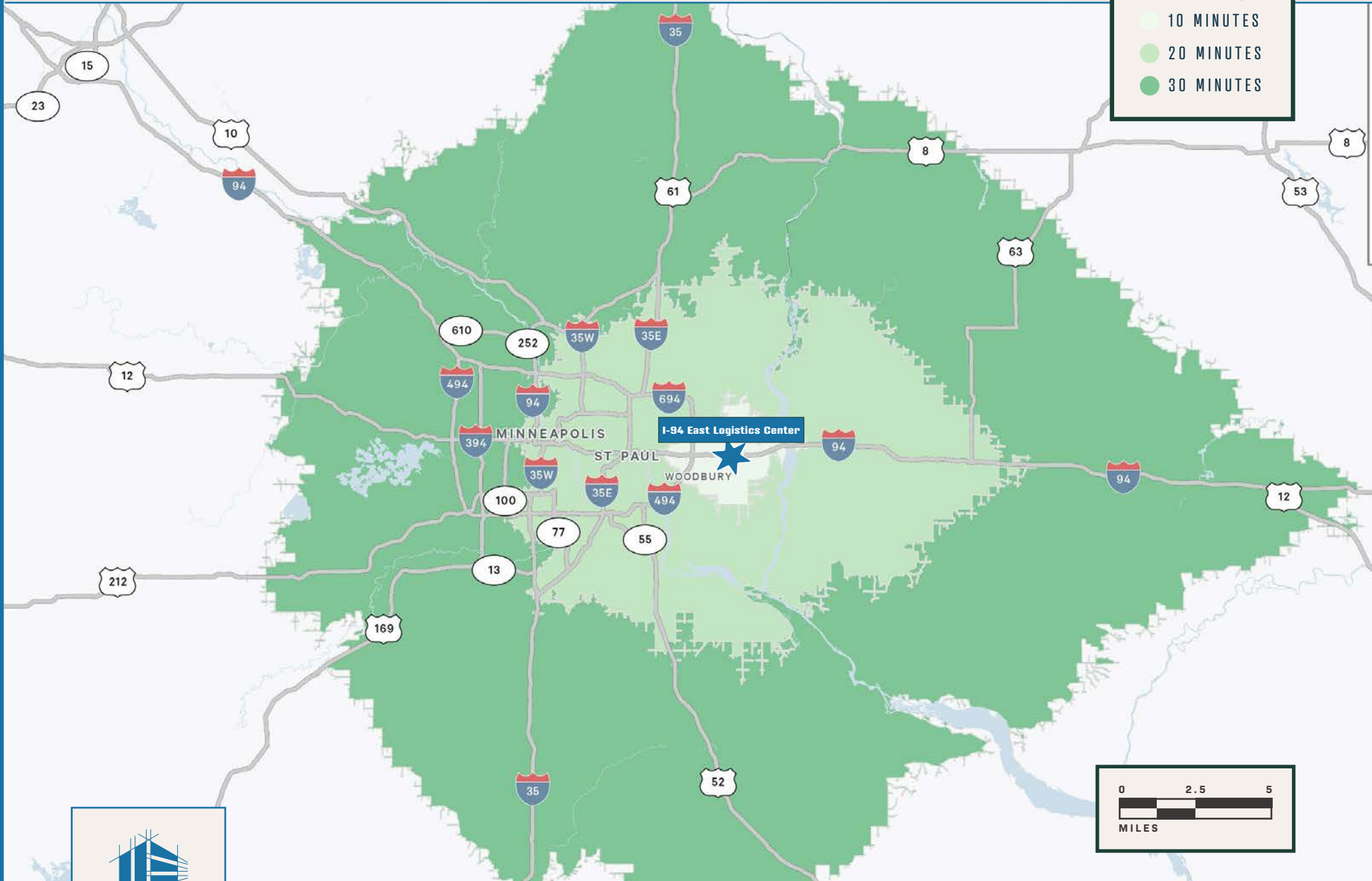
DRIVE TIME MAP

DRIVE TIMES

10 MINUTES

20 MINUTES

30 MINUTES



I-94 East Logistics Center

MINNEAPOLIS

ST. PAUL

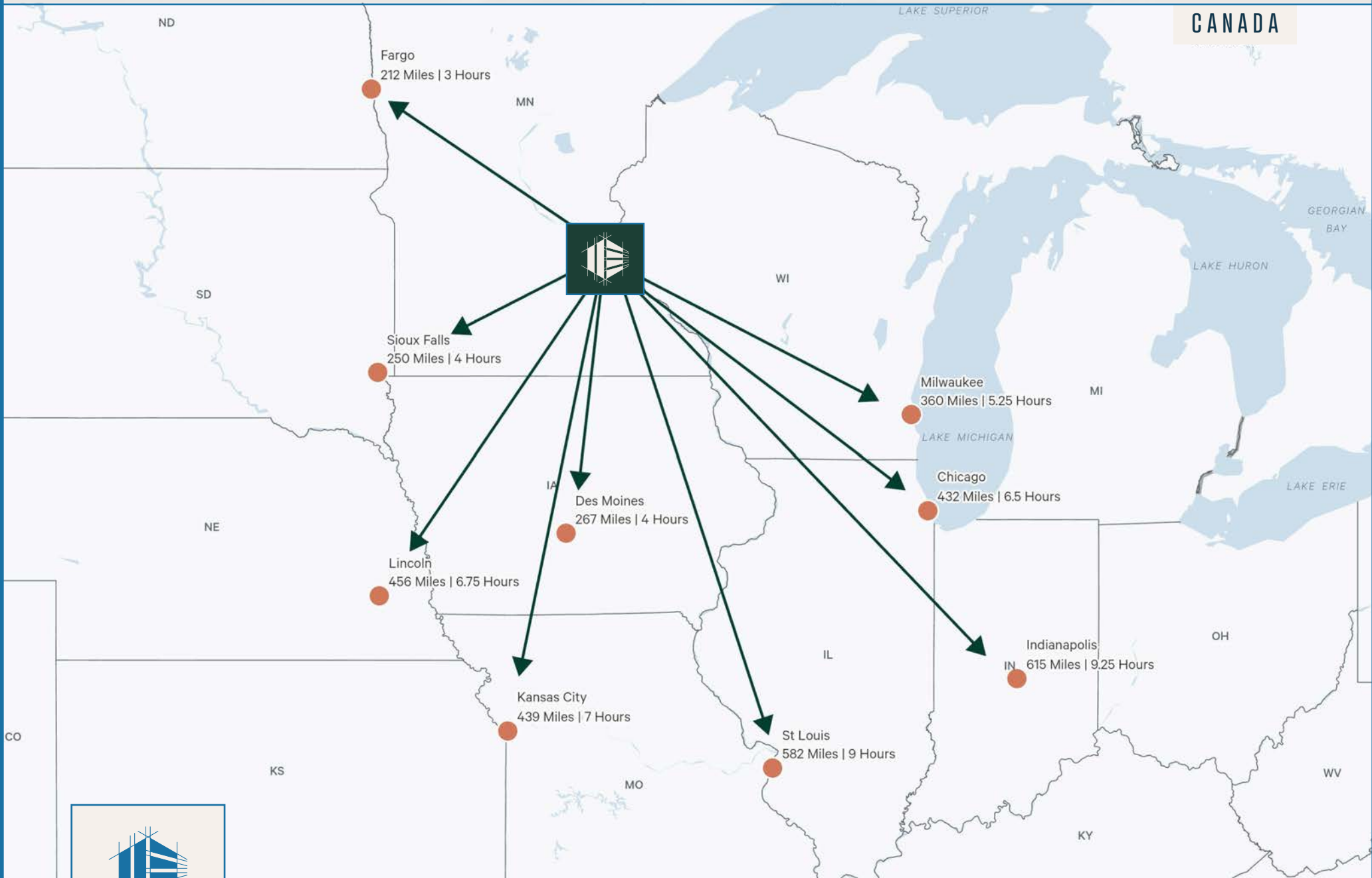
WOODBURY



MILES



I-94 MAP



PROPERTY DEMOGRAPHICS

POPULATION

	3 MINUTES	5 MINUTES	10 MINUTES
2023 POPULATION - CURRENT YEAR ESTIMATE	4,679	20,753	94,993
2028 POPULATION - FIVE YEAR PROJECTION	5,484	22,364	98,802
2010 POPULATION - CENSUS	2,655	13,660	78,634
2020 POPULATION - CENSUS	3,915	18,371	90,986
2023-2028 ANNUAL POPULATION GROWTH RATE	3.23%	1.51%	0.79%

HOUSEHOLDS

	3 MINUTES	5 MINUTES	10 MINUTES
2023 HOUSEHOLDS - CURRENT YEAR ESTIMATE	1,951	7,722	35,958
2028 HOUSEHOLDS - FIVE YEAR PROJECTION	2,343	8,444	37,663
2010 HOUSEHOLDS - CENSUS	998	4,963	29,304
2020 HOUSEHOLDS - CENSUS	1,585 (90.7%)	6,688 (94.4%)	33,980 (96.2%)
2023-2028 ANNUAL HOUSEHOLD GROWTH RATE	3.73%	4.52%	1.76%
2023 AVERAGE HOUSEHOLD SIZE	2.40	2.68	2.63

HOUSEHOLD INCOME

	3 MINUTES	5 MINUTES	10 MINUTES
2023 AVERAGE HOUSEHOLD INCOME	\$147,536	\$168,173	\$152,155
2028 AVERAGE HOUSEHOLD INCOME	\$162,775	\$185,992	\$169,627
2023 MEDIAN HOUSEHOLD INCOME	\$110,809	\$129,822	\$112,396
2028 MEDIAN HOUSEHOLD INCOME	\$121,733	\$150,987	\$125,537
2023 PER CAPITA INCOME	\$62,189	\$62,909	\$57,194
2028 PER CAPITA INCOME	\$69,655	\$70,516	\$64,210

HOUSING UNITS

	3 MINUTES	5 MINUTES	10 MINUTES
2023 HOUSING UNITS	2,225	8,316	37,603
2023 VACANT HOUSING UNITS	274 (12.3%)	594 (7.1%)	1,645 (4.4%)
2023 OCCUPIED HOUSING UNITS	1,951 (87.7%)	7,722 (92.9%)	35,958 (95.6%)
2023 OWNER OCCUPIED HOUSING UNITS	1,356 (60.9%)	6,135 (73.8%)	28,220 (75.0%)
2023 RENTER OCCUPIED HOUSING UNITS	595 (26.7%)	1,587 (19.1%)	7,738 (20.6%)

EDUCATION

	3 MINUTES	5 MINUTES	10 MINUTES
2023 POPULATION 25 AND OVER	2,936	13,444	63,661
HS AND ASSOCIATES DEGREES	970 (33.0%)	4,257 (31.7%)	25,447 (40.0%)
BACHELOR'S DEGREE OR HIGHER	1,917 (65.3%)	8,843 (65.8%)	36,469 (57.3%)

PLACE OF WORK

	3 MINUTES	5 MINUTES	10 MINUTES
2023 BUSINESSES	73	410	3,512
2023 EMPLOYEES	914	5,214	52,211





I-94

EAST LOGISTICS CENTER



BRYAN VAN HOOF

Senior Vice President
+1 952 924 4624
bryan.vanhoof@cbre.com

JEFF PRZYTARSKI

Senior Vice President
+1 952 924 4895
jeff.przytarski@cbre.com

BRUCE CARLAND

Vice President
+1 612 336 4207
bruce.carland@cbre.com

SAM MANKE

Senior Associate
+1763 398 9047
sam.manke@cbre.com

CBRE

NAI Legacy

STOTAN
INDUSTRIAL

©2024 CBRE, Inc. All rights reserved. This information has been obtained from sources believed reliable, but has not been verified for accuracy or completeness. You should conduct a careful, independent investigation of the property and verify all information. Any reliance on this information is solely at your own risk. CBRE and the CBRE logo are service marks of CBRE, Inc. All other marks displayed on this document are the property of their respective owners, and the use of such logos does not imply any affiliation with or endorsement of CBRE. Photos herein are the property of their respective owners. Use of these images without the express written consent of the owner is prohibited. PMStudio_August2022