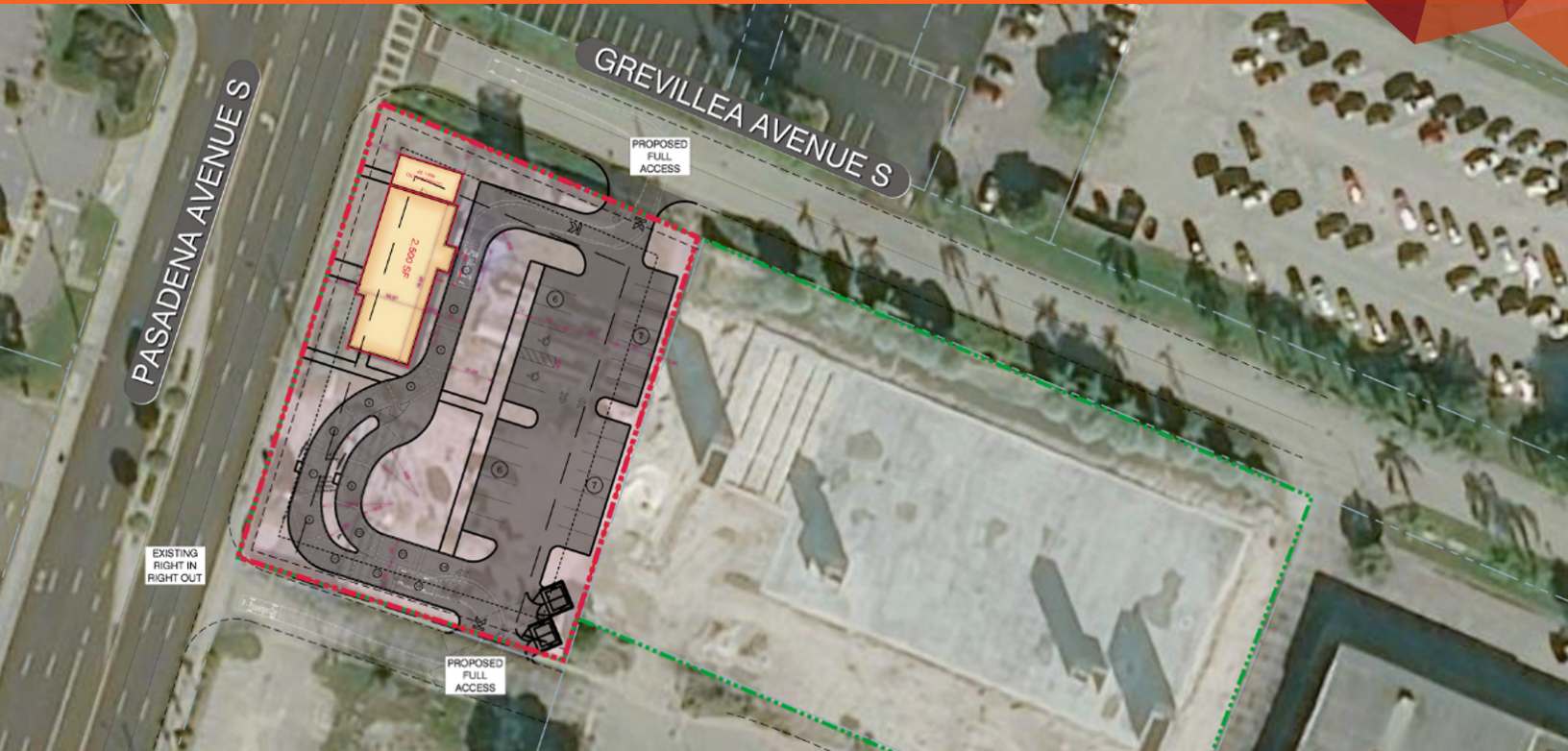


900 PASADENA AVE S

SAINT PETERSBURG, FL 33707

FOR LEASE




LOCATION DESCRIPTION

Located at 900 Pasadena Ave S

PROPERTY HIGHLIGHTS

- Ground Lease or BTS
- 0.79 Acres
- Can develop up to 5,000 SF of Retail/Medical and approved for drive-thru
- Located in close proximity to the dominant grocers Publix, Winn-Dixie, and Walmart Neighborhood Market
- Traffic Counts (AADT): Pasadena Ave (24,000)
- Full Access



 DEMOGRAPHICS	1 MILES	3 MILES	5 MILE
Total Population	11,408	75,807	185,462
Daytime Population	11,990	71,091	177,391
Households	6,309	37,218	86,502
Average HH Income	\$94,936	\$98,257	\$91,850



JEREMY KRAL

jeremy.kral@tscg.com
813.547.6804

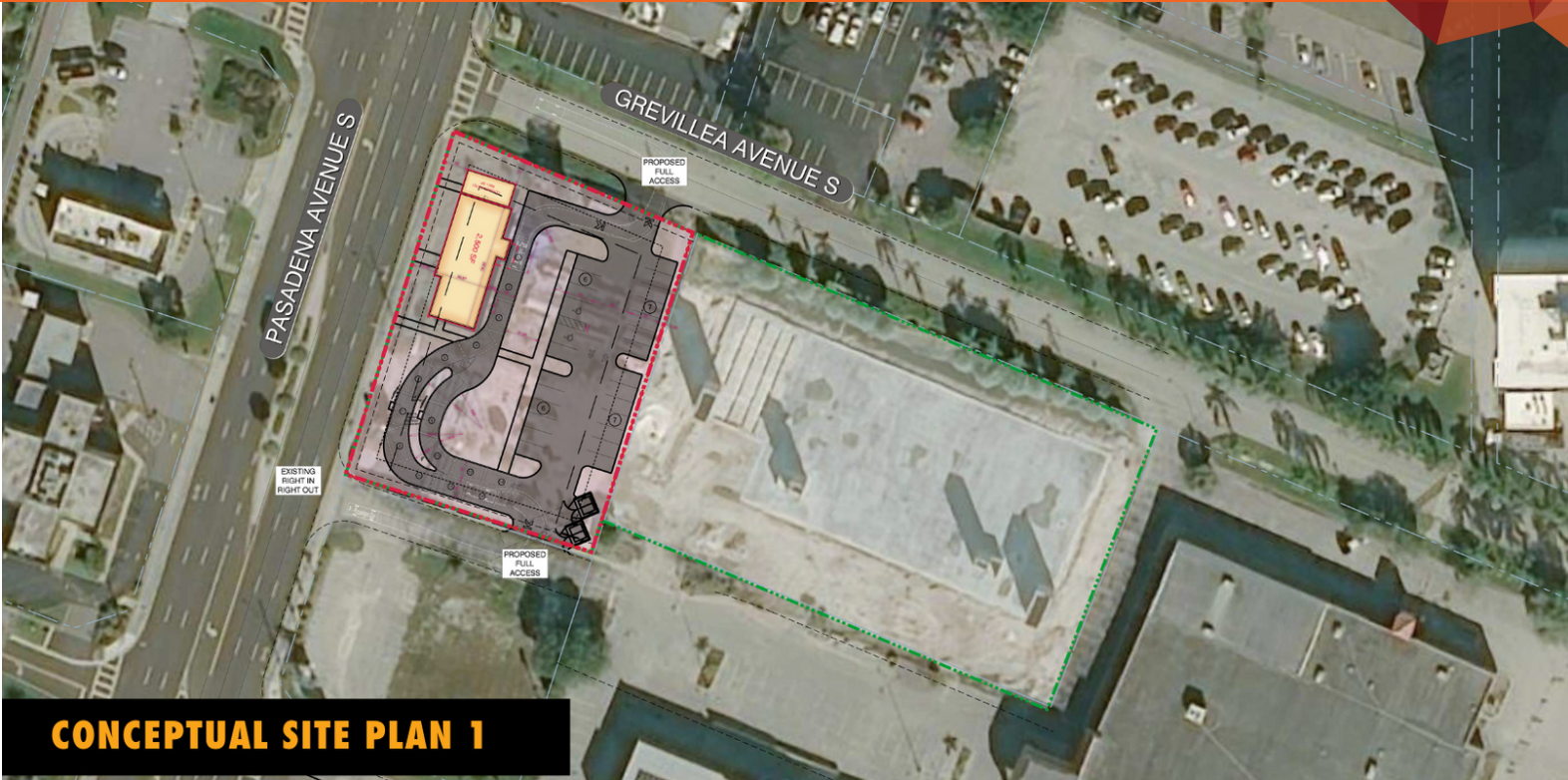
ERIC BATTISTONE

eric.battistone@tscg.com
813.547.6804

900 PASADENA AVE S

SAINT PETERSBURG, FL 33707

FOR LEASE



JEREMY KRAL
jeremy.kral@tscg.com
813.547.6804

ERIC BATTISTONE
eric.battistone@tscg.com
813.547.6804

900 PASADENA AVE S

SAINT PETERSBURG, FL 33707

FOR LEASE



JEREMY KRAL
jeremy.kral@tscg.com
813.547.6804

ERIC BATTISTONE
eric.battistone@tscg.com
813.547.6804