



CORNERSTONE
COMMERCIAL REAL ESTATE, LLC

**7735 W RIVERSIDE DR.
GARDEN CITY, ID 83714**

OFFICE FOR LEASE

2,475 SF



PROPERTY DETAILS:

LEASE RATE: **\$17.95/SF/YR**
LEASE TERM: **3-5 YEARS**
LEASE TYPE: **NNN**
EST. NNN: **\$5.15/SF**
PARKING: **30 SURFACE SPACES**
ZONING: **C-2**

HIGHLIGHTS:

- Stand alone office building
- Abundance of natural light
- Walking distance to the Boise River Greenbelt
- Excellent Glenwood St exposure
- Partial furnishings available

CONTACT AGENTS FOR SHOWING

Katie Gagnon

208.350.8768
katieg@onecornerstone.net

Ron Ramza, Broker

208.867.9993
ronr@onecornerstone.net

**IMMEDIATE
AVAILABILITY!**

All We Do Begins With You!

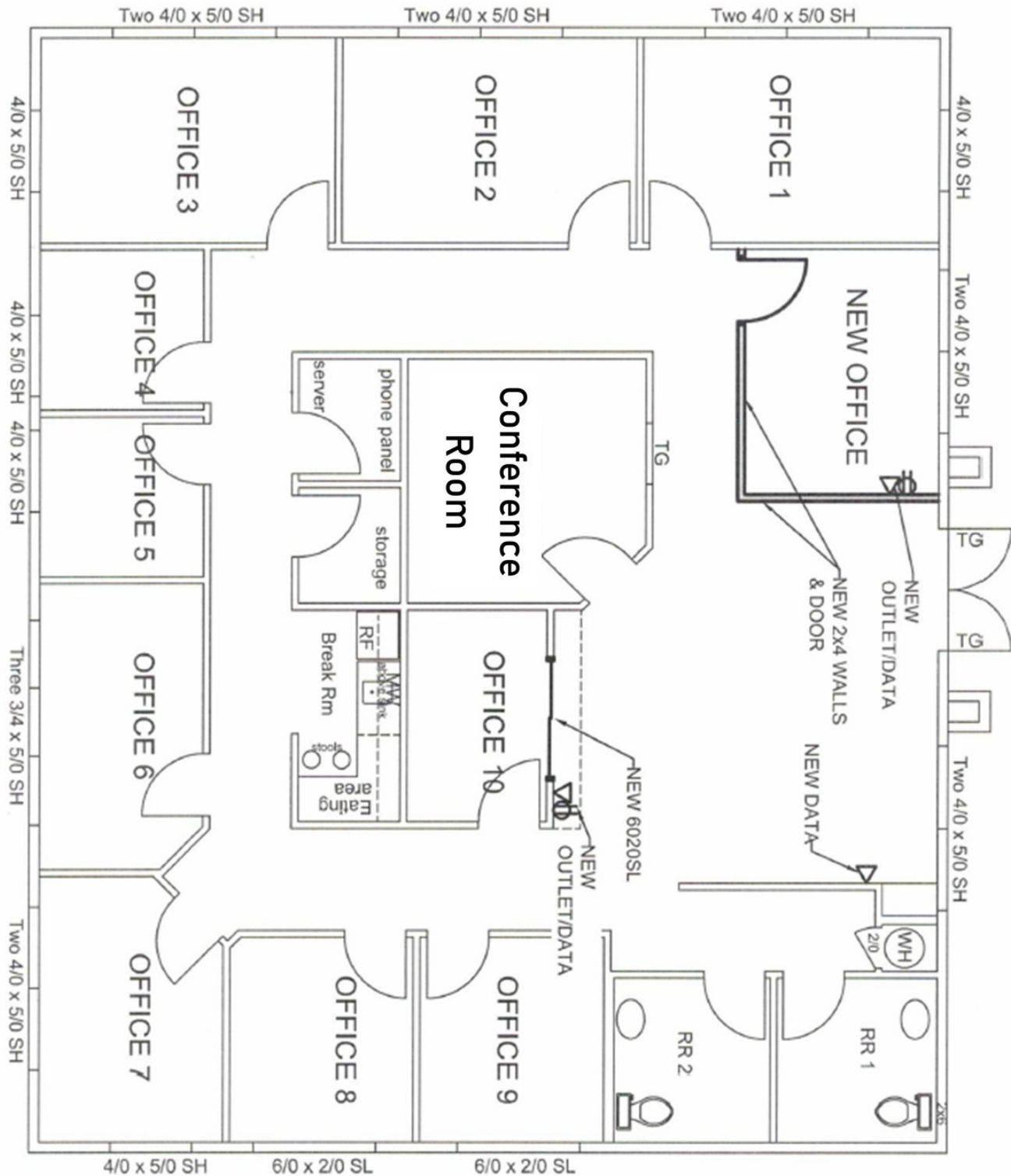
www.onecornerstone.net



CORNERSTONE
COMMERCIAL REAL ESTATE, LLC

FLOOR PLAN

7735 W RIVERSIDE DR.
GARDEN CITY, ID 83714





CORNERSTONE
COMMERCIAL REAL ESTATE, LLC

**7735 W RIVERSIDE DR.
GARDEN CITY, ID 83714**

