

# **FREESTANDING INDUSTRIAL BUILDING FOR LEASE**

1325 W HARWELL RD | GILBERT, AZ 85233



**COMMERCIAL PROPERTIES INC.**

Locally Owned. Globally Connected. COMMERCIAL PROPERTIES INC.

TEMPE: 2323 W. University Drive, Tempe, AZ 85281 | 480.966.2301  
SCOTTSDALE: 8777 N. Gainey Center Dr., Suite 245, Scottsdale, AZ 85258 | [www.cpiaz.com](http://www.cpiaz.com)

For More Information  
Please Contact:

**Eric Jones**

Owner/Agent

D 480.966.8671

M 602.291.9400

[ejones@cpiaz.com](mailto:ejones@cpiaz.com)

**John G. Soldo, SIOR**

D 480.966.1304

M 602.989.4584

[jsoldo@cpiaz.com](mailto:jsoldo@cpiaz.com)

**Cory Breinholt**

D 480.889.2569

M 480.220.9987

[cbreinholt@cpiaz.com](mailto:cbreinholt@cpiaz.com)

The information contained herein has been obtained from various sources. We have no reason to doubt its accuracy; however, J & J Commercial Properties, Inc. has not verified such information and makes no guarantee, warranty or representation about such information. The prospective buyer or lessee should independently verify all dimensions, specifications, floor plans, and all information prior to the lease or purchase of the property. All offerings are subject to prior sale, lease, or withdrawal from the market without prior notice. 07.25.25

# FREESTANDING INDUSTRIAL BUILDING FOR LEASE

1325 W HARWELL RD | GILBERT, AZ 85233

## PROPERTY SUMMARY

AVAILABLE DATE January 2026

BUILDING SIZE ±7,360 SF

OFFICE SIZE ±1,200 SF

POWER 600 AMPS

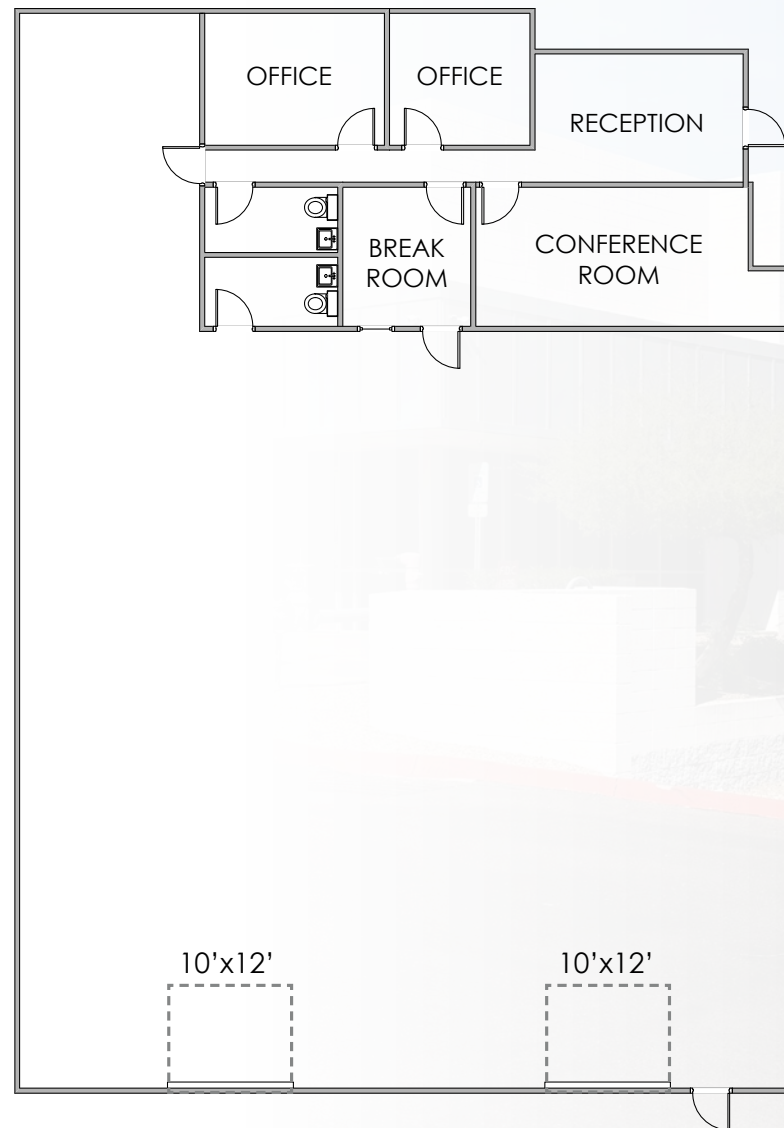
A/C 100%

CLEAR HEIGHT 15'

ROLL UP DOORS (2) 10'X12'

FENCED YARD Yes

ZONING I-1, Gilbert



TEMPE: 2323 W. University Drive, Tempe, AZ 85281 | 480.966.2301  
SCOTTSDALE: 8777 N. Gainey Center Dr., Suite 245, Scottsdale, AZ 85258 | www.cpiplaz.com

The information contained herein has been obtained from various sources. We have no reason to doubt its accuracy, however, J & J Commercial Properties, Inc. has not verified such information and makes no guarantee, warranty or representation about such information. The prospective buyer or lessee should independently verify all dimensions, specifications, floor plans, and all information prior to the lease or purchase of the property. All offerings are subject to prior sale, lease, or withdrawal from the market without prior notice. 07.25.25

For More Information  
Please Contact:

**Eric Jones**  
Owner/Agent  
D 480.966.8671  
M 602.291.9400  
ejones@cpiplaz.com

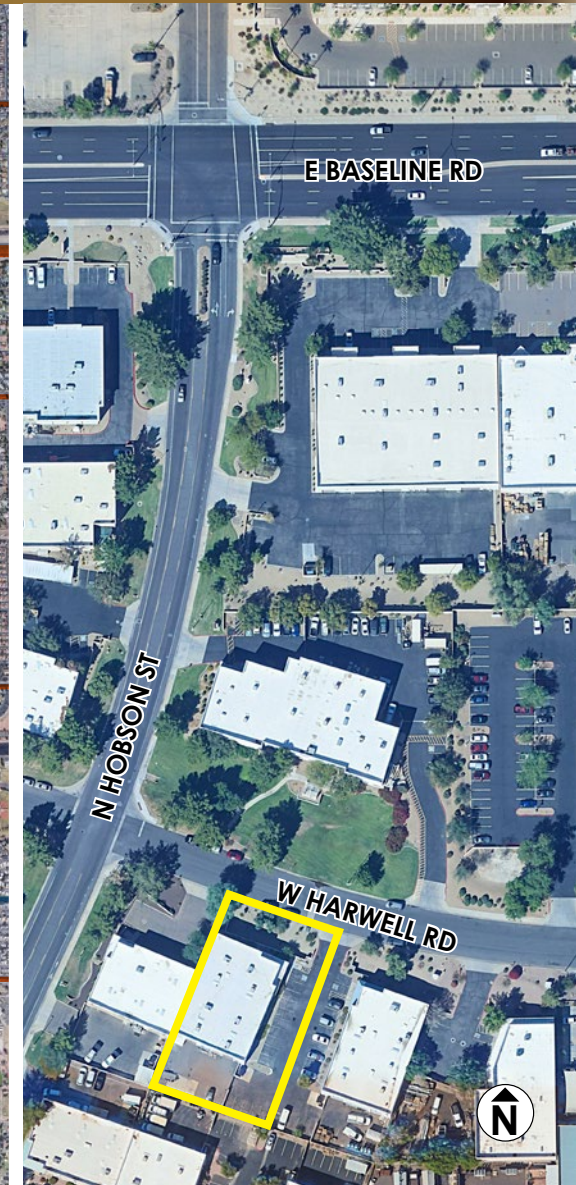
**John G. Soldo, SIOR**  
D 480.966.1304  
M 602.989.4584  
jsoldo@cpiplaz.com

**Cory Breinholt**  
D 480.889.2569  
M 480.220.9987  
cbreinholt@cpiplaz.com



# FREESTANDING INDUSTRIAL BUILDING FOR LEASE

1325 W HARWELL RD | GILBERT, AZ 85233



**COMMERCIAL PROPERTIES INC.**

Locally Owned. Globally Connected. ©2018 CP

TEMPE: 2323 W. University Drive, Tempe, AZ 85281 | 480.966.2301  
SCOTTSDALE: 8777 N. Gainey Center Dr., Suite 245, Scottsdale, AZ 85258 | www.cpiplaz.com

For More Information  
Please Contact:

**Eric Jones**

Owner/Agent

D 480.966.8671

M 602.291.9400

[ejones@cpiplaz.com](mailto:ejones@cpiplaz.com)

**John G. Soldo, SIOR**

D 480.966.1304

M 602.989.4584

[jsoldo@cpiplaz.com](mailto:jsoldo@cpiplaz.com)

**Cory Breinholt**

D 480.889.2569

M 480.220.9987

[cbreinholt@cpiplaz.com](mailto:cbreinholt@cpiplaz.com)

The information contained herein has been obtained from various sources. We have no reason to doubt its accuracy; however, J & J Commercial Properties, Inc. has not verified such information and makes no guarantee, warranty or representation about such information. The prospective buyer or lessee should independently verify all dimensions, specifications, floor plans, and all information prior to the lease or purchase of the property. All offerings are subject to prior sale, lease, or withdrawal from the market without prior notice. 07.25.25