

# GALLERIA

AT CHERRY CREEK

720 SOUTH COLORADO BLVD. GLENDALE, COLORADO

1ST FLOOR SOUTH TOWER

479 – 17,384 RSF AVAILABLE



# GALLERIA

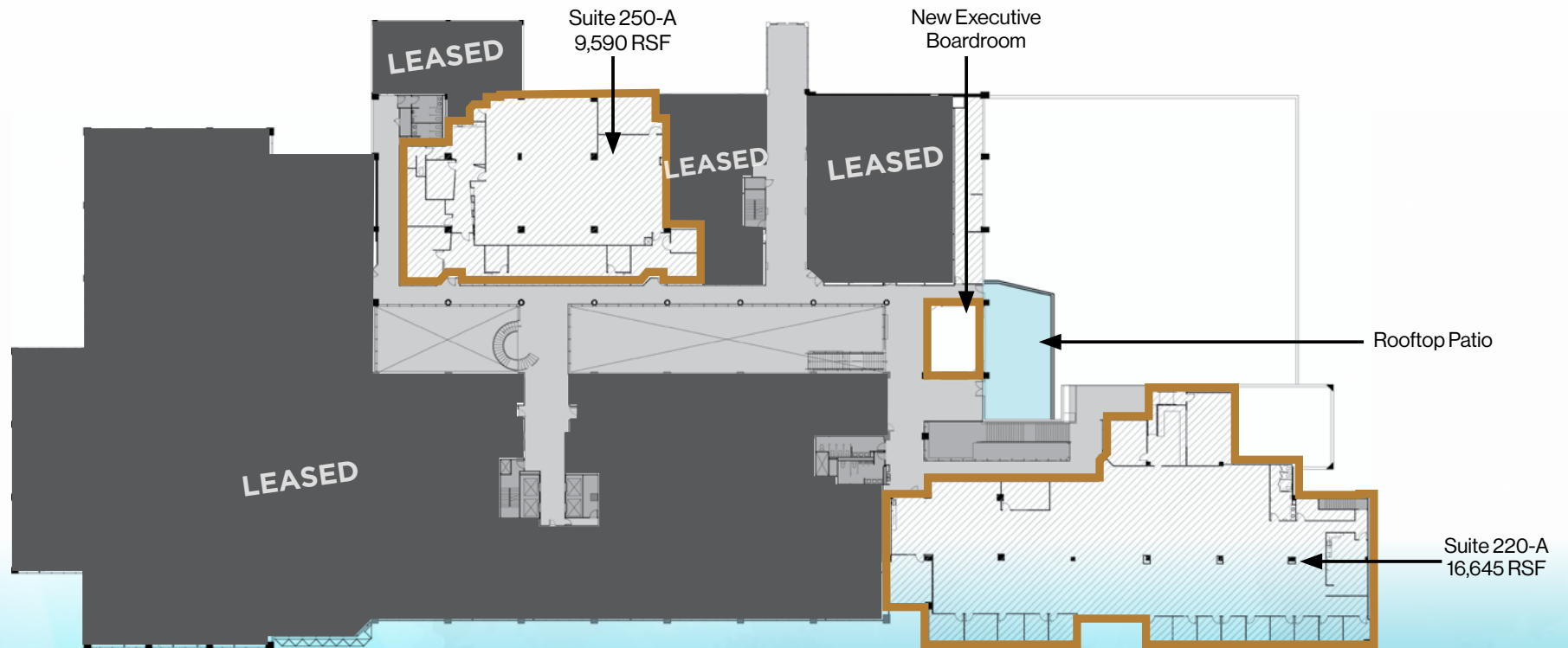
AT CHERRY CREEK

720 SOUTH COLORADO BLVD. GLENDALE, COLORADO

2ND FLOOR SOUTH TOWER

9,590-16,645 RSF AVAILABLE

Great lobby exposure! Adjacent to executive boardroom and new rooftop patio!



DAN BEER | Director | +1 303 813 6494 | dan.beer@cushwake.com  
MICHAEL COPPOLA | Senior Associate | +1 303 312 4212 | michael.coppola@cushwake.com



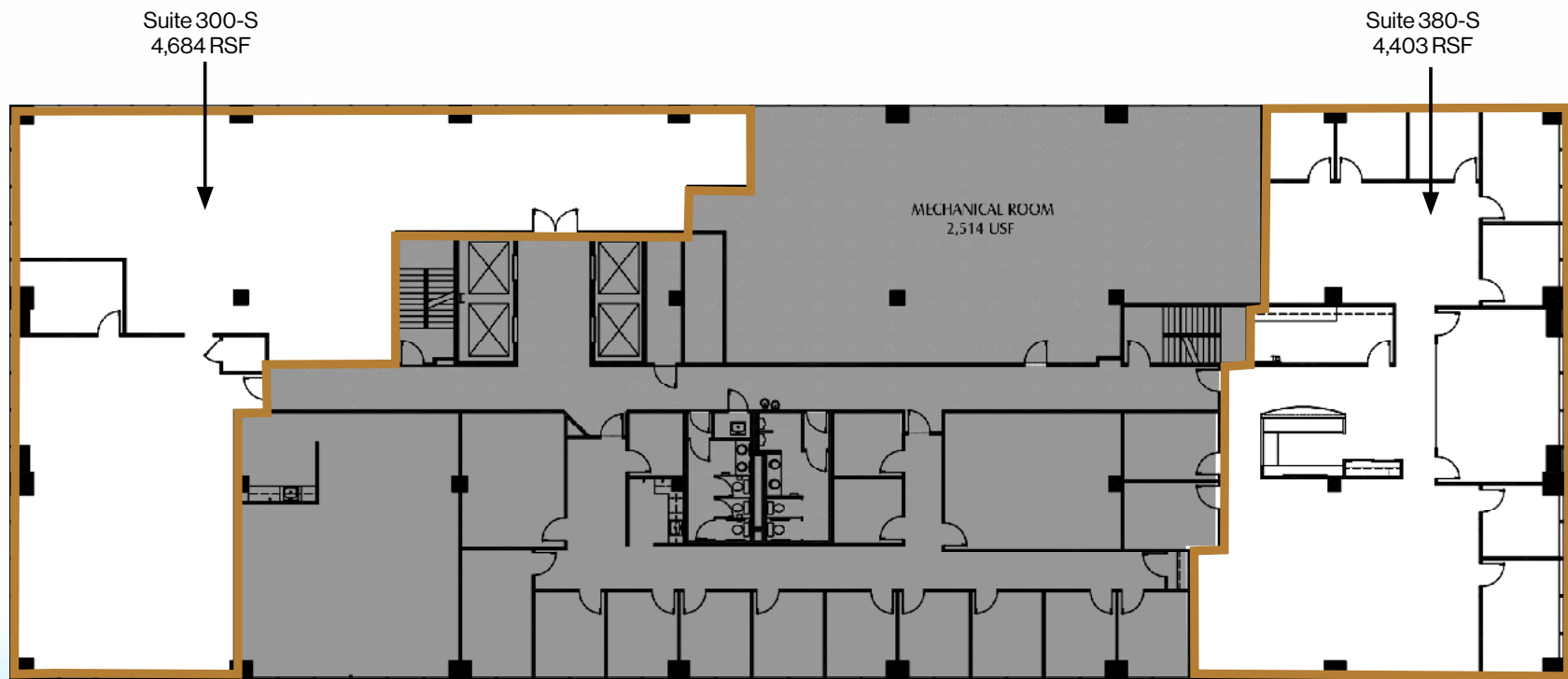
# GALLERIA

AT CHERRY CREEK

720 SOUTH COLORADO BLVD. GLENDALE, COLORADO

3RD FLOOR SOUTH TOWER

4,403 - 9,087 RSF AVAILABLE



# GALLERIA

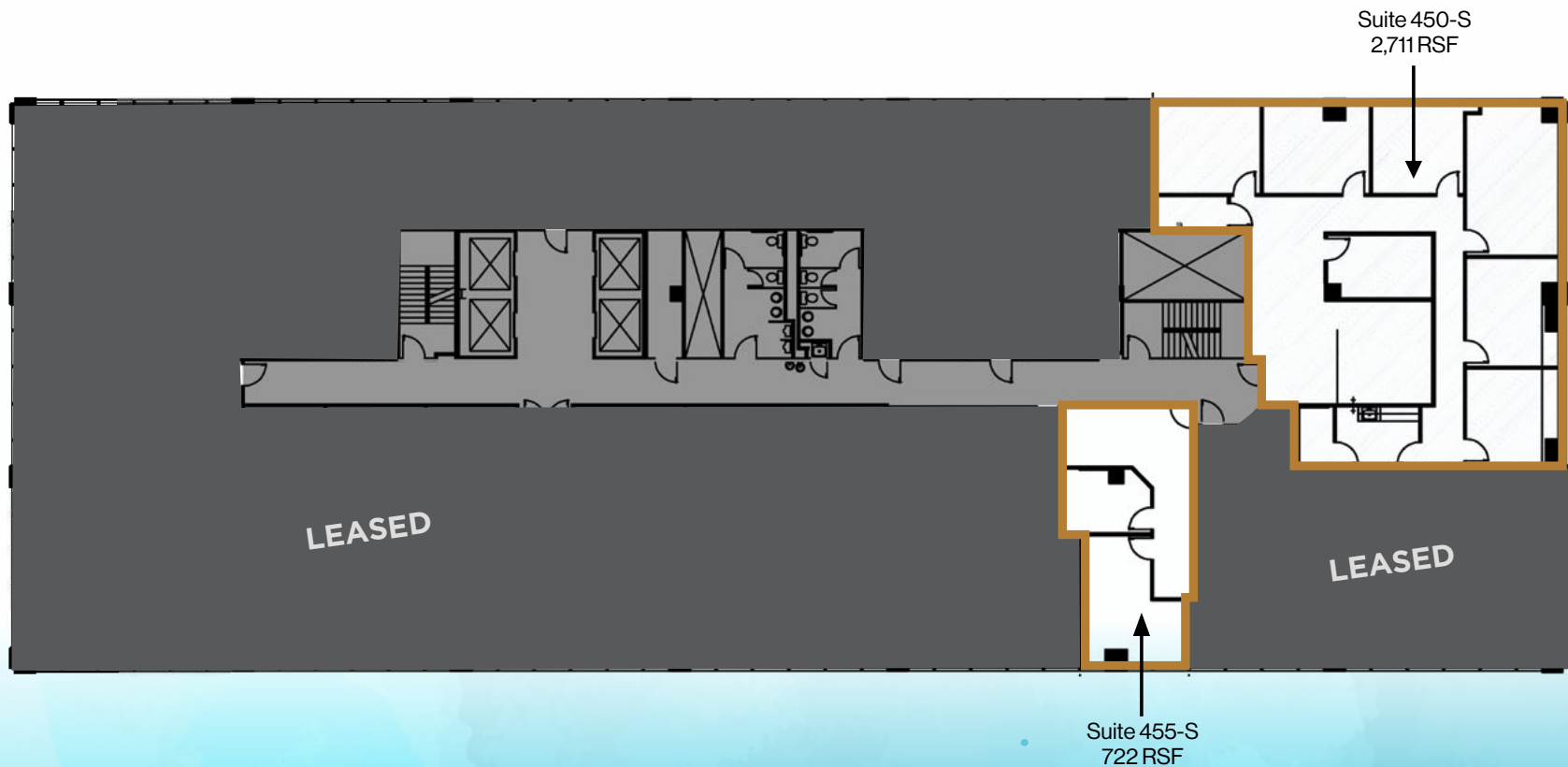
AT CHERRY CREEK

720 SOUTH COLORADO BLVD. GLENDALE, COLORADO

4TH FLOOR SOUTH TOWER

722 - 3,433 RSF AVAILABLE

Corner office with tons of glass.



DAN BEER | Director | +1 303 813 6494 | dan.beer@cushwake.com  
MICHAEL COPPOLA | Senior Associate | +1 303 312 4212 | michael.coppola@cushwake.com



# GALLERIA

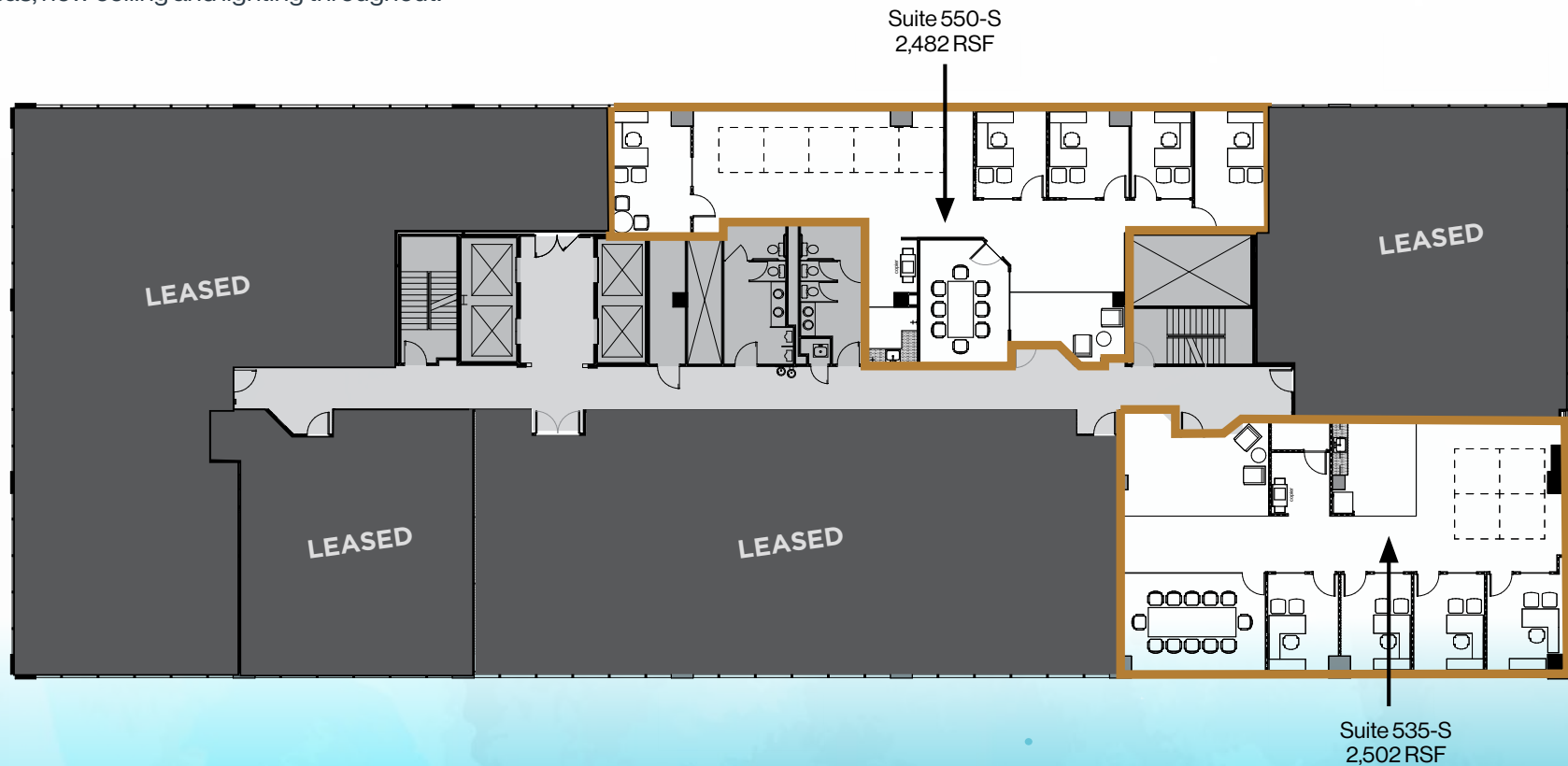
AT CHERRY CREEK

720 SOUTH COLORADO BLVD. GLENDALE, COLORADO

## 5TH FLOOR SOUTH TOWER

# 2,482-4,984 RSF AVAILABLE

New spec suites now complete! All new finishes with full sidelights, break areas, new ceiling and lighting throughout.



# GALLERIA

AT CHERRY CREEK

720 SOUTH COLORADO BLVD. GLENDALE, COLORADO

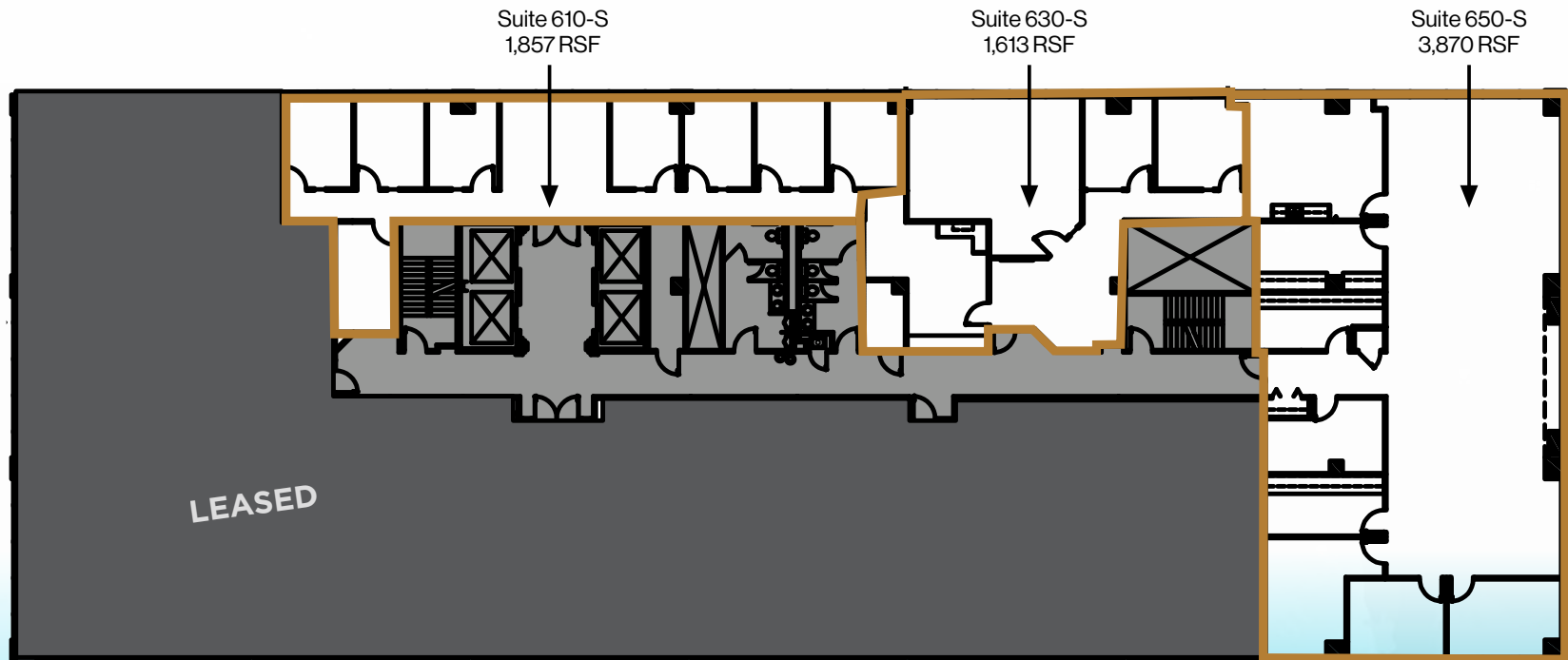
## 6TH FLOOR SOUTH TOWER

# 1,630 - 7,340 RSF AVAILABLE

Suite 610-S is a former counseling office. Efficient with seven (7) offices on glass.

Suite 630-S includes a large conference room and two (2) offices on glass.

Suite 650-S is mostly open with several workrooms and a break area.



# GALLERIA

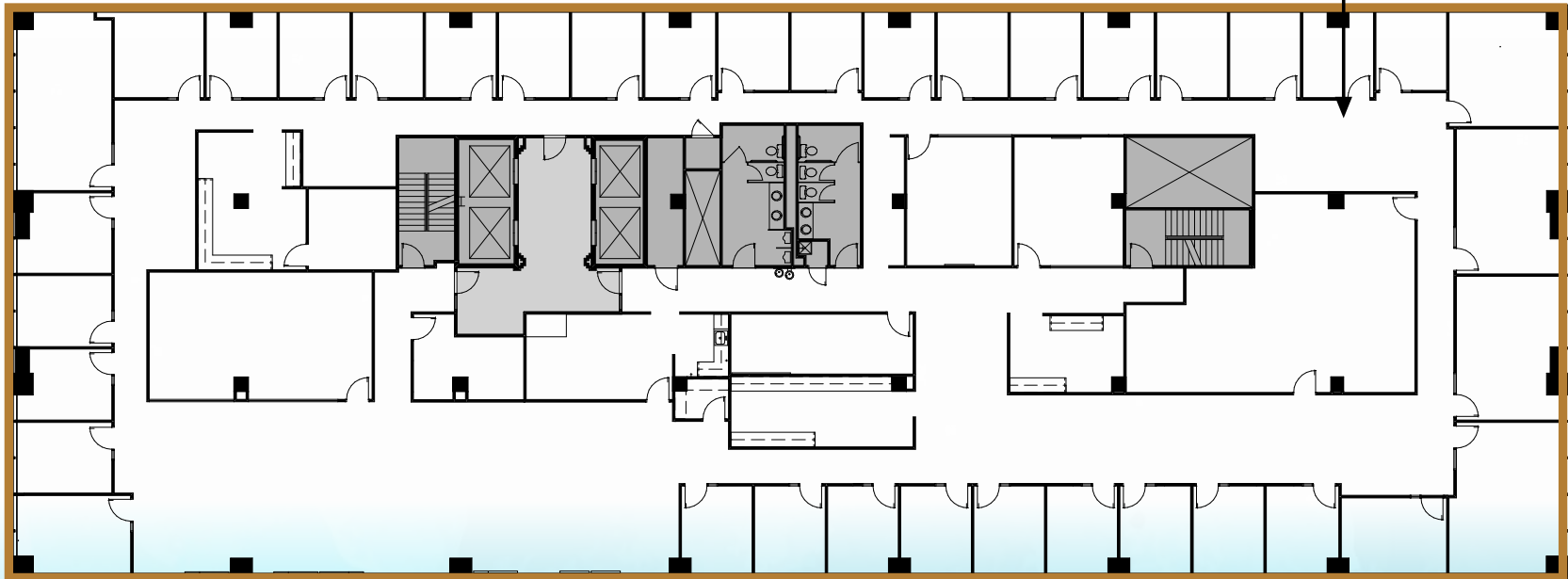
AT CHERRY CREEK

720 SOUTH COLORADO BLVD. GLENDALE, COLORADO

## 7TH FLOOR SOUTH TOWER 16,445 RSF AVAILABLE

Unimpeded western views! Perimeter offices with mix of open interior and workrooms.

Suite 700-S  
16,445 RSF



DAN BEER | Director | +1 303 813 6494 | dan.beer@cushwake.com  
MICHAEL COPPOLA | Senior Associate | +1 303 312 4212 | michael.coppola@cushwake.com



# GALLERIA

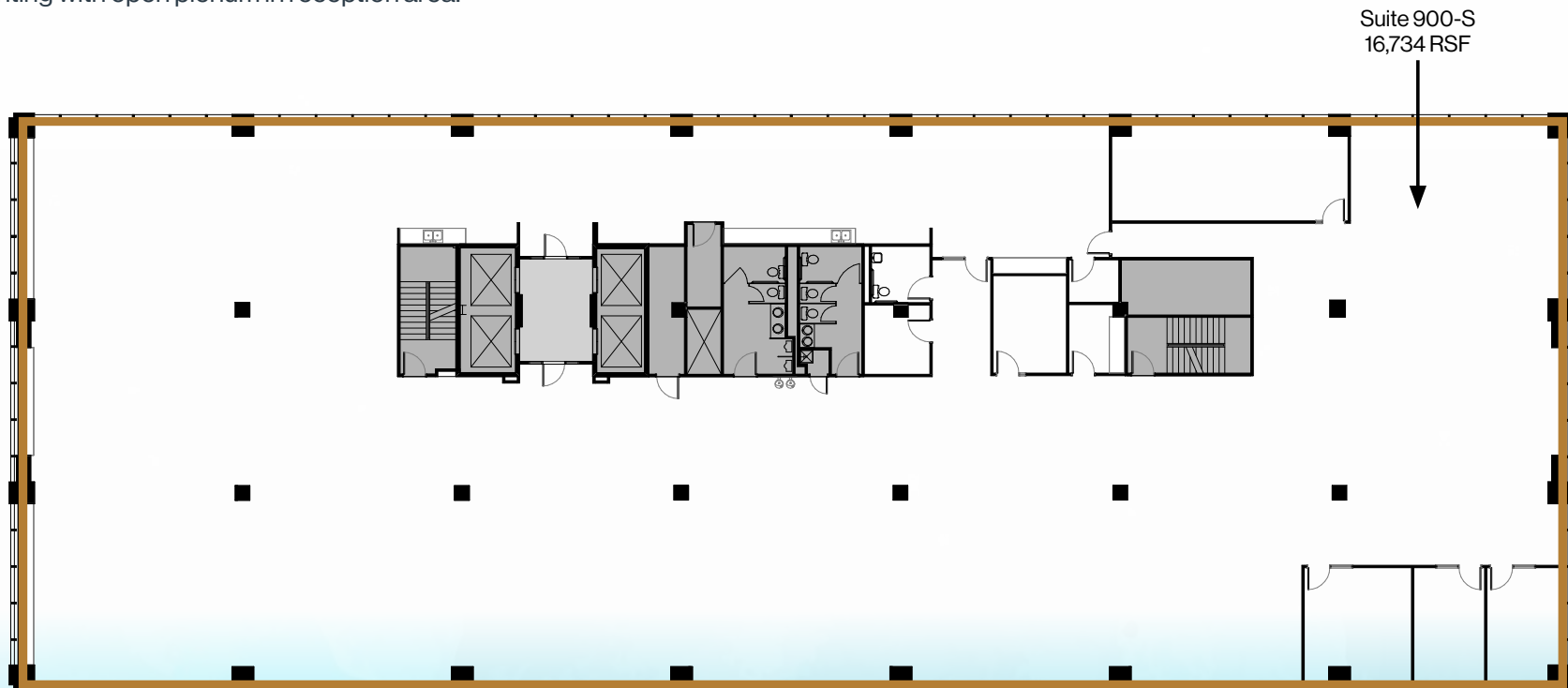
AT CHERRY CREEK

720 SOUTH COLORADO BLVD. GLENDALE, COLORADO

9TH FLOOR SOUTH TOWER

16,734 RSF AVAILABLE

Unimpeded Western Views. The space has been whiteboxed with all new ceiling, lighting with open plenum in reception area.



DAN BEER | Director | +1 303 813 6494 | dan.beer@cushwake.com  
MICHAEL COPPOLA | Senior Associate | +1 303 312 4212 | michael.coppola@cushwake.com





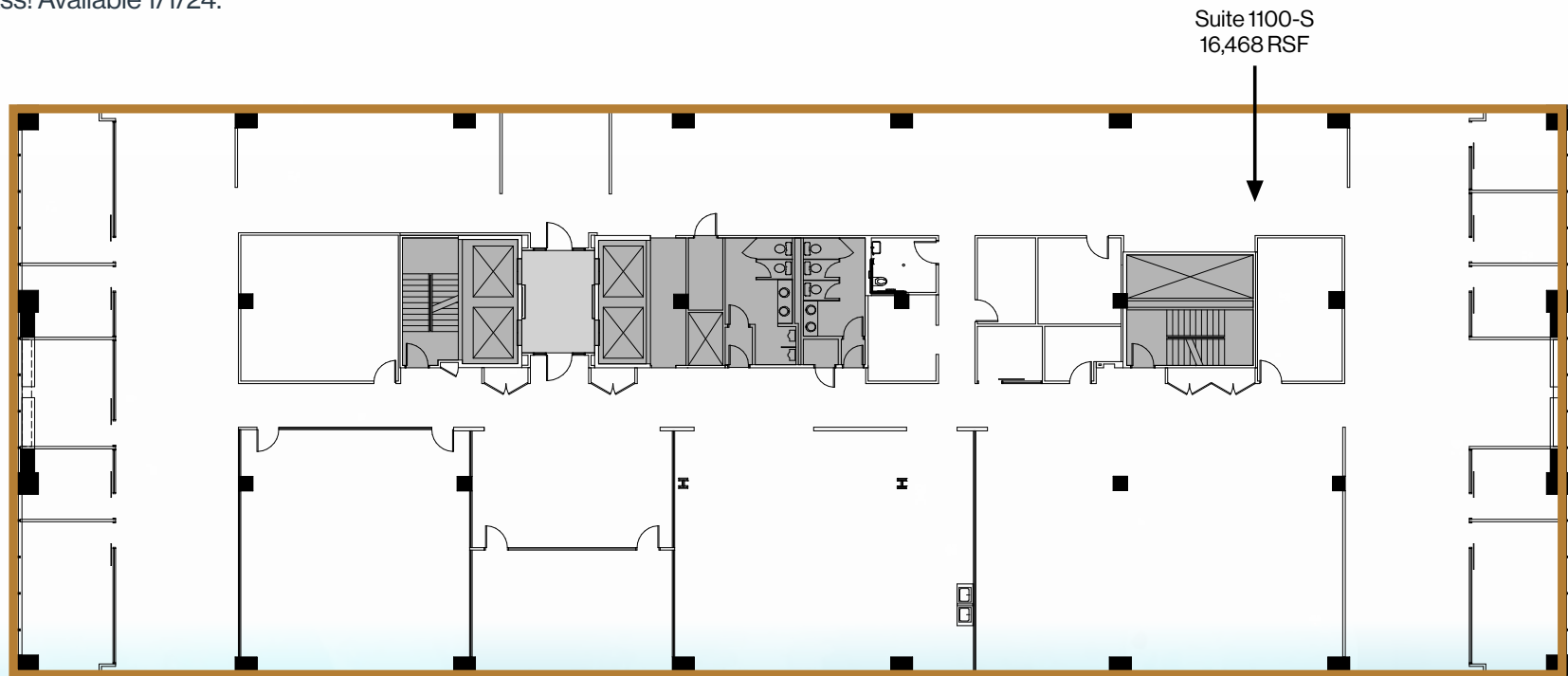
# GALLERIA

AT CHERRY CREEK

720 SOUTH COLORADO BLVD. GLENDALE, COLORADO

## 11TH FLOOR SOUTH TOWER 16,468 RSF AVAILABLE

Great western views! High-end finishes with numerous upgrades and tons of glass! Available 1/1/24.



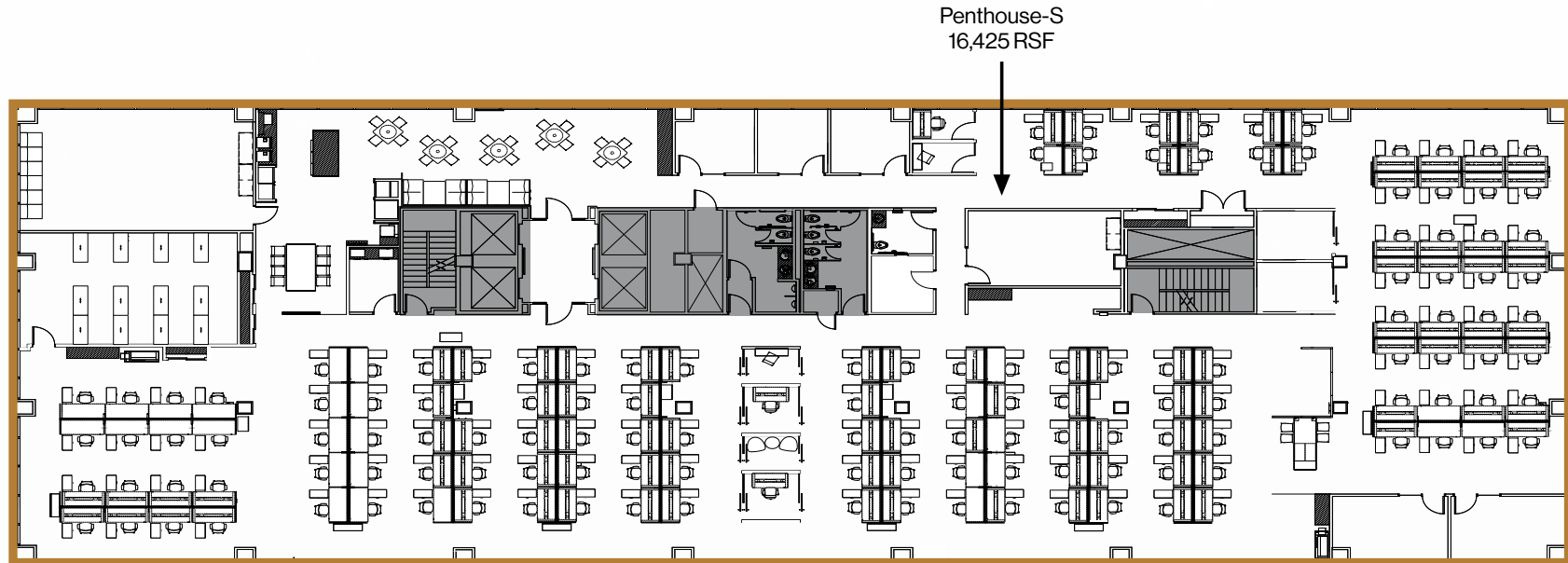
# GALLERIA

AT CHERRY CREEK

720 SOUTH COLORADO BLVD. GLENDALE, COLORADO

## PENTHOUSE FLOOR SOUTH TOWER 16,425 RSF AVAILABLE

Top Floor Available! Amazing western views. Plug 'n Play, furniture available!



DAN BEER | Director | +1 303 813 6494 | dan.beer@cushwake.com  
MICHAEL COPPOLA | Senior Associate | +1 303 312 4212 | michael.coppola@cushwake.com



# GALLERIA

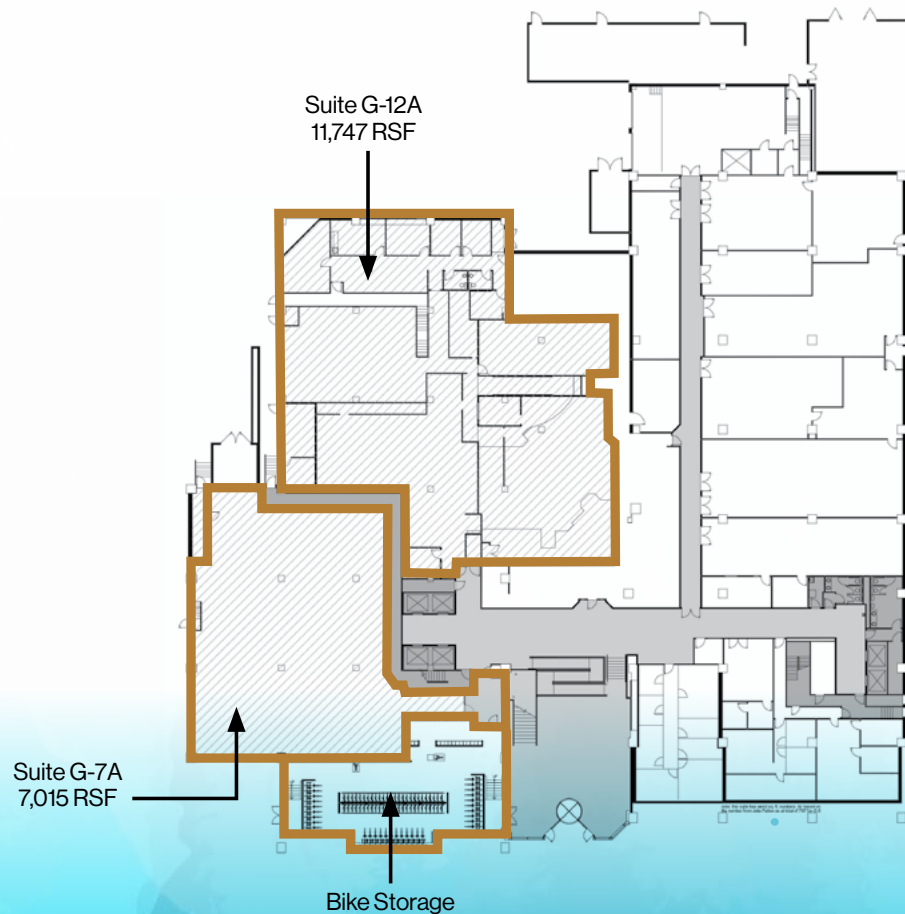
AT CHERRY CREEK

720 SOUTH COLORADO BLVD. GLENDALE, COLORADO

GROUND FLOOR ATRIUM

7,015 – 18,726 RSF AVAILABLE

Lower level space with some window line. Could be used for Flex or Storage Space.



DAN BEER | Director | +1 303 813 6494 | dan.beer@cushwake.com  
MICHAEL COPPOLA | Senior Associate | +1 303 312 4212 | michael.coppola@cushwake.com

# GALLERIA

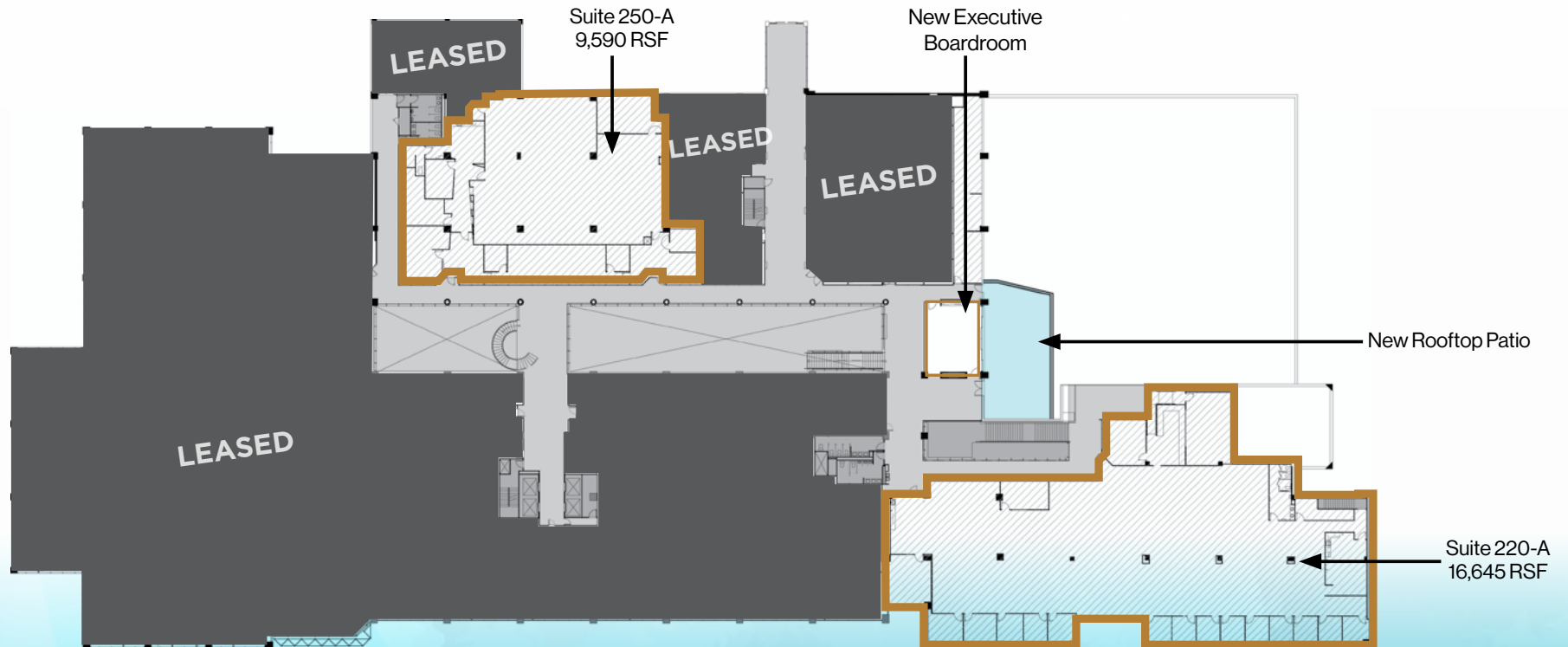
AT CHERRY CREEK

720 SOUTH COLORADO BLVD. GLENDALE, COLORADO

2ND FLOOR ATRIUM

1,150-27,385 RSF AVAILABLE

Great lobby exposure! Mix of open/private office ready for tenant finish.



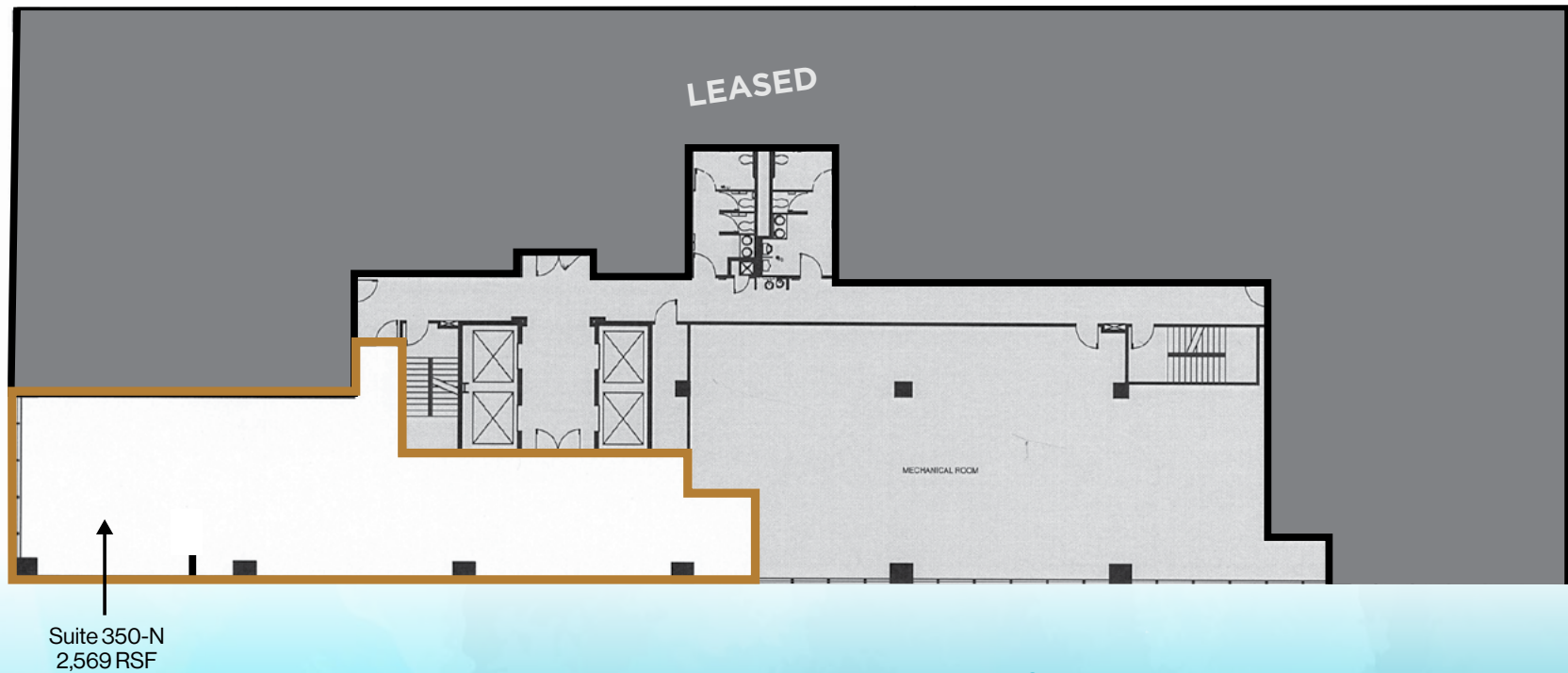
# GALLERIA

AT CHERRY CREEK

720 SOUTH COLORADO BLVD. GLENDALE, COLORADO

## 3RD FLOOR NORTH TOWER 2,569 RSF AVAILABLE

Open space in shell condition, ready for tenant finishes!



**DAN BEER** | Director | +1 303 813 6494 | [dan.beer@cushwake.com](mailto:dan.beer@cushwake.com)  
**MICHAEL COPPOLA** | Senior Associate | +1 303 312 4212 | [michael.coppola@cushwake.com](mailto:michael.coppola@cushwake.com)



# GALLERIA

AT CHERRY CREEK

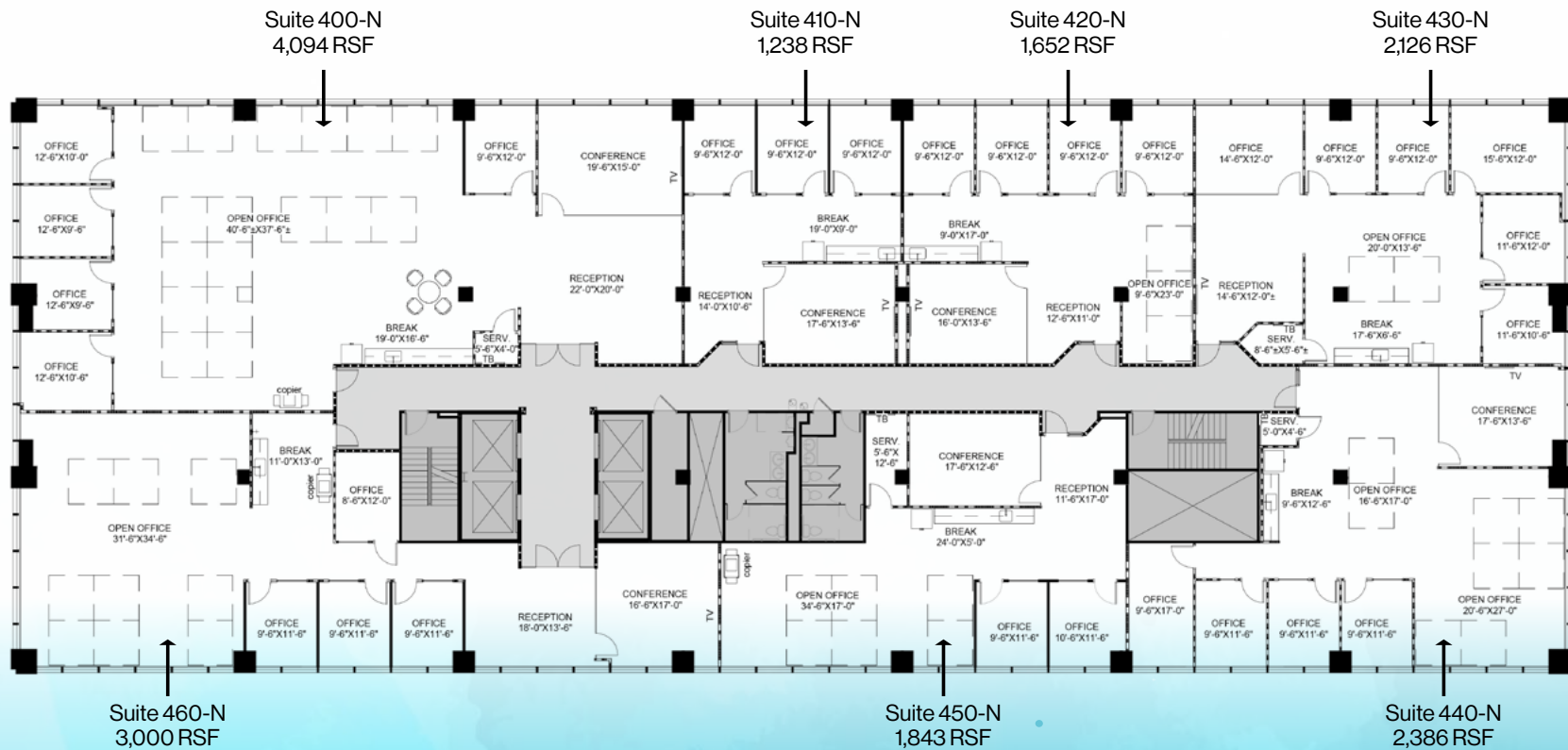
720 SOUTH COLORADO BLVD. GLENDALE, COLORADO

## 4TH FLOOR NORTH TOWER

# 16,339 RSF AVAILABLE

Seven (7) New Spec Suites Under Construction, Delivering January 2024.

All New Finishes with Full Sidelights, Break Areas, New Ceiling & Lighting Throughout.



# GALLERIA

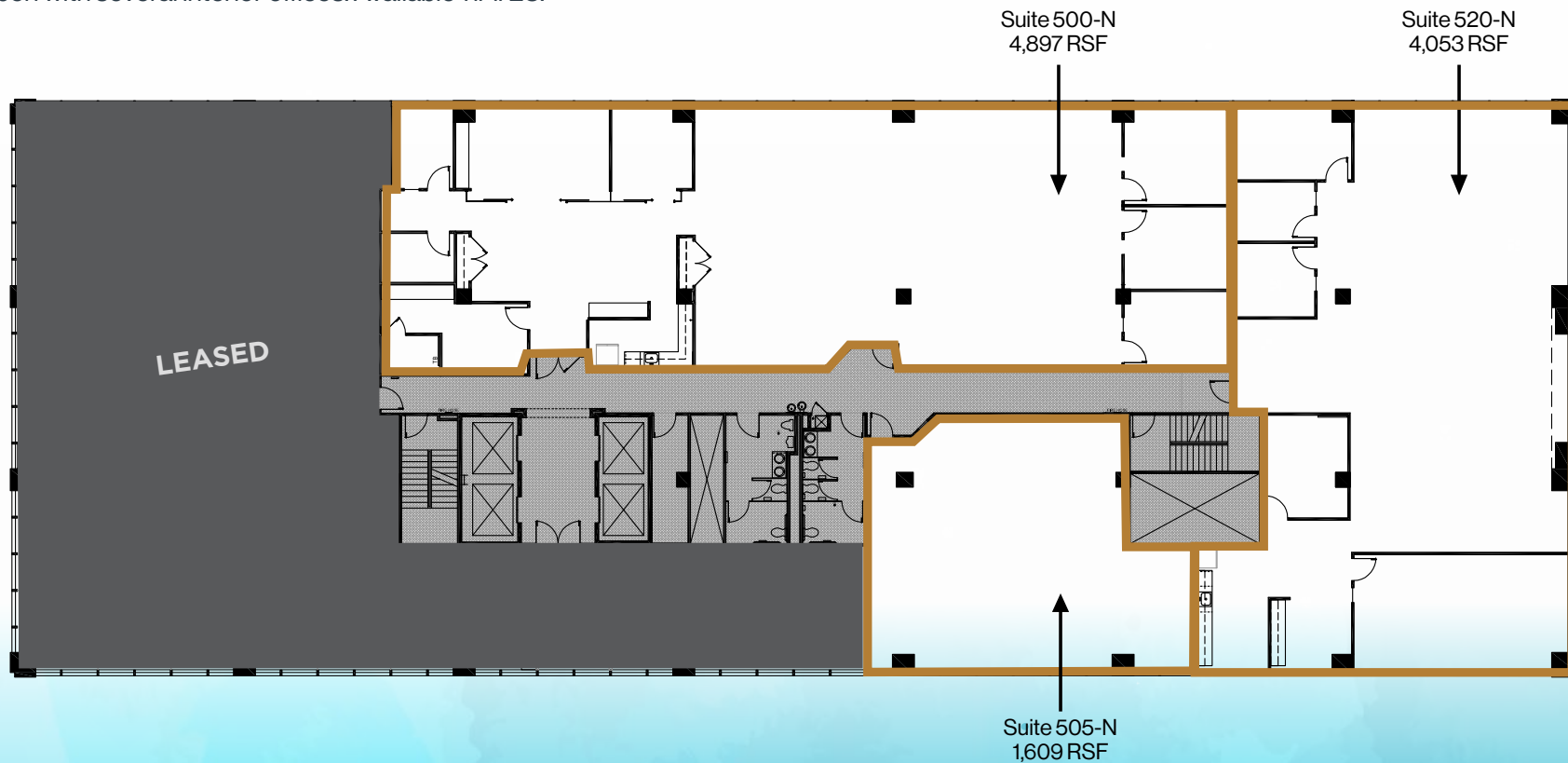
AT CHERRY CREEK

720 SOUTH COLORADO BLVD. GLENDALE, COLORADO

## 5TH FLOOR NORTH TOWER

# 1,609 – 10,559 RSF AVAILABLE

Move-in ready! Open plenum in reception area. Cool, creative entry and break area.  
Mostly open with several interior offices. Available 11/1/23.



DAN BEER | Director | +1 303 813 6494 | dan.beer@cushwake.com  
MICHAEL COPPOLA | Senior Associate | +1 303 312 4212 | michael.coppola@cushwake.com



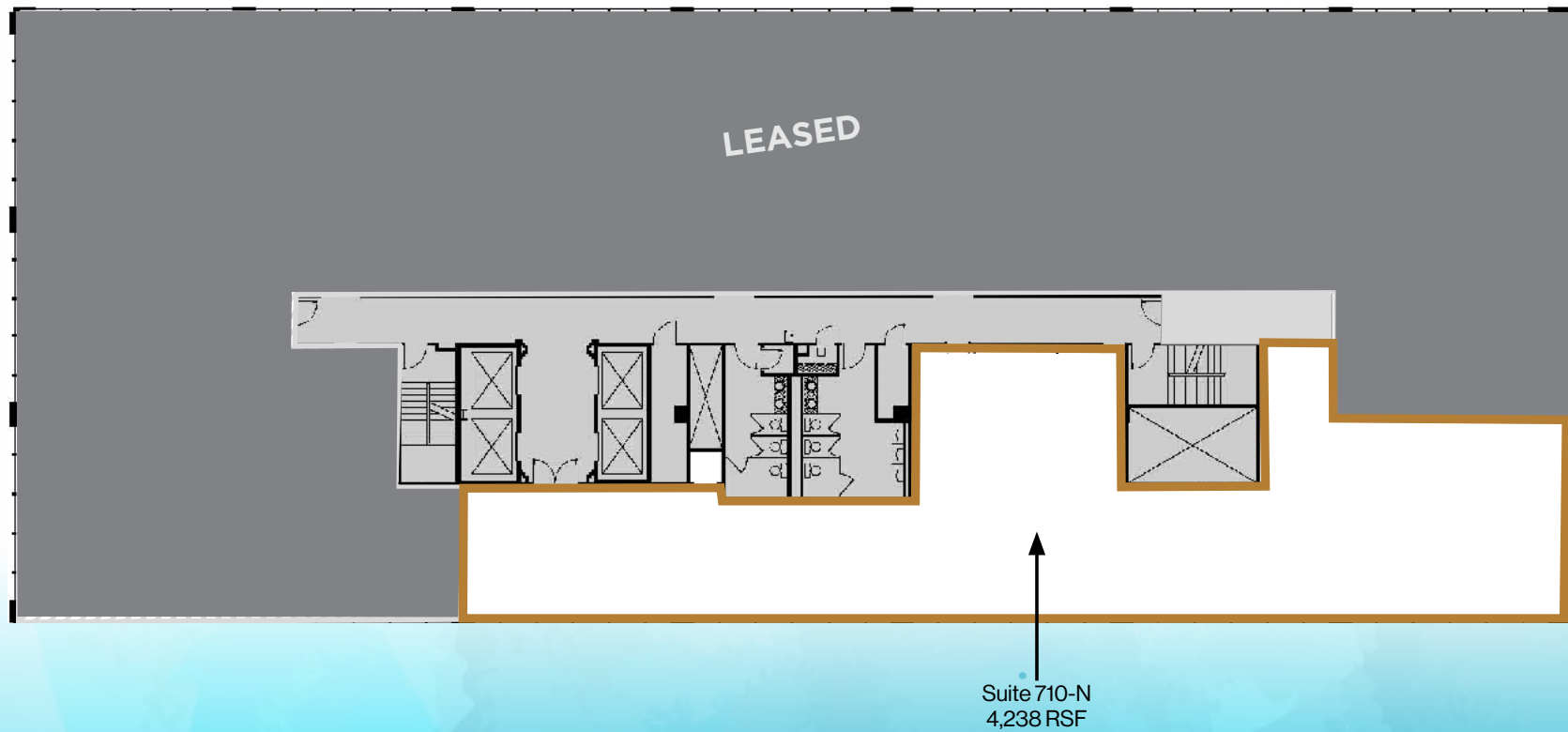
# GALLERIA

AT CHERRY CREEK

720 SOUTH COLORADO BLVD. GLENDALE, COLORADO

## 7TH FLOOR NORTH TOWER 4,238 RSF AVAILABLE

Shell space ready for tenant finish.



DAN BEER | Director | +1 303 813 6494 | dan.beer@cushwake.com  
MICHAEL COPPOLA | Senior Associate | +1 303 312 4212 | michael.coppola@cushwake.com





# GALLERIA

AT CHERRY CREEK

720 SOUTH COLORADO BLVD. GLENDALE, COLORADO

## 8TH FLOOR NORTH TOWER 16,254 RSF AVAILABLE

Perimeter and interior offices with open work area.  
Internal staircase to Suite 990-N for 23,977 RSF contiguous.



# GALLERIA

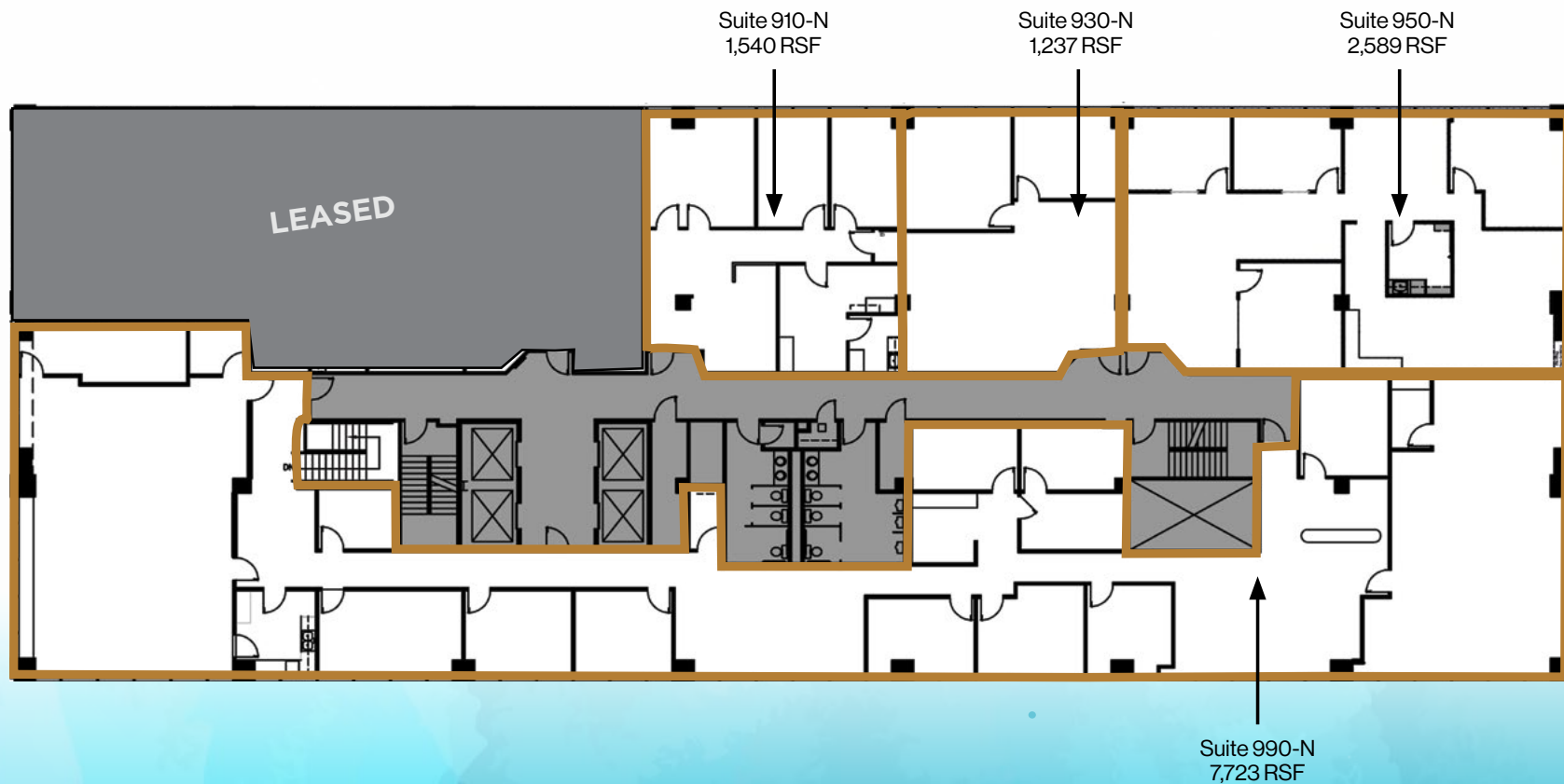
AT CHERRY CREEK

720 SOUTH COLORADO BLVD. GLENDALE, COLORADO

## 9TH FLOOR NORTH TOWER

# 1,237 - 13,089 RSF AVAILABLE

Several small suites available with perimeter offices. Suite 990-N is connected to Suite 800-N via internal stairwell for 23,977 RSF contiguous.



**DAN BEER** | Director | +1 303 813 6494 | dan.beer@cushwake.com  
**MICHAEL COPPOLA** | Senior Associate | +1 303 312 4212 | michael.coppola@cushwake.com



# GALLERIA

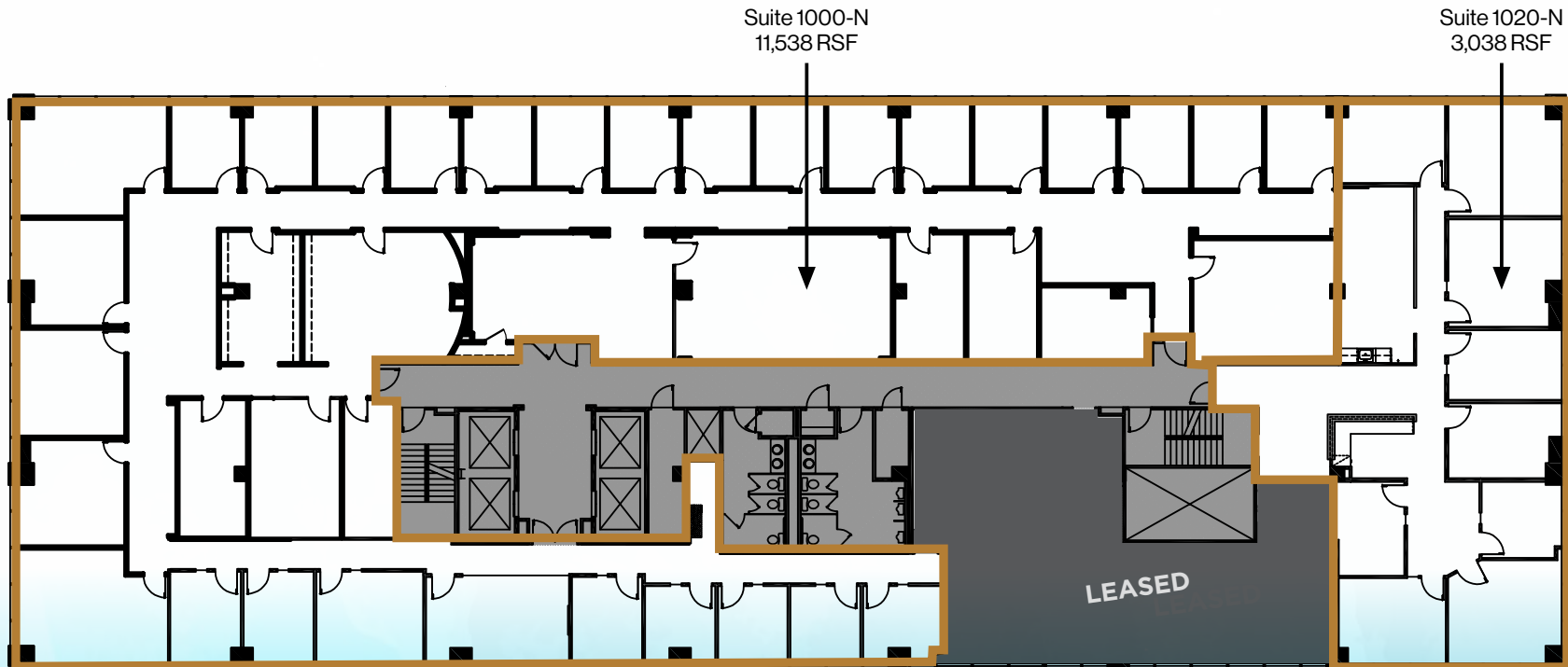
AT CHERRY CREEK

720 SOUTH COLORADO BLVD. GLENDALE, COLORADO

10TH FLOOR NORTH TOWER

3,038 – 14,576 RSF AVAILABLE

Unimpeded western and Cherry Creek views! Perimeter offices with several conference and training rooms.



DAN BEER | Director | +1 303 813 6494 | dan.beer@cushwake.com  
MICHAEL COPPOLA | Senior Associate | +1 303 312 4212 | michael.coppola@cushwake.com



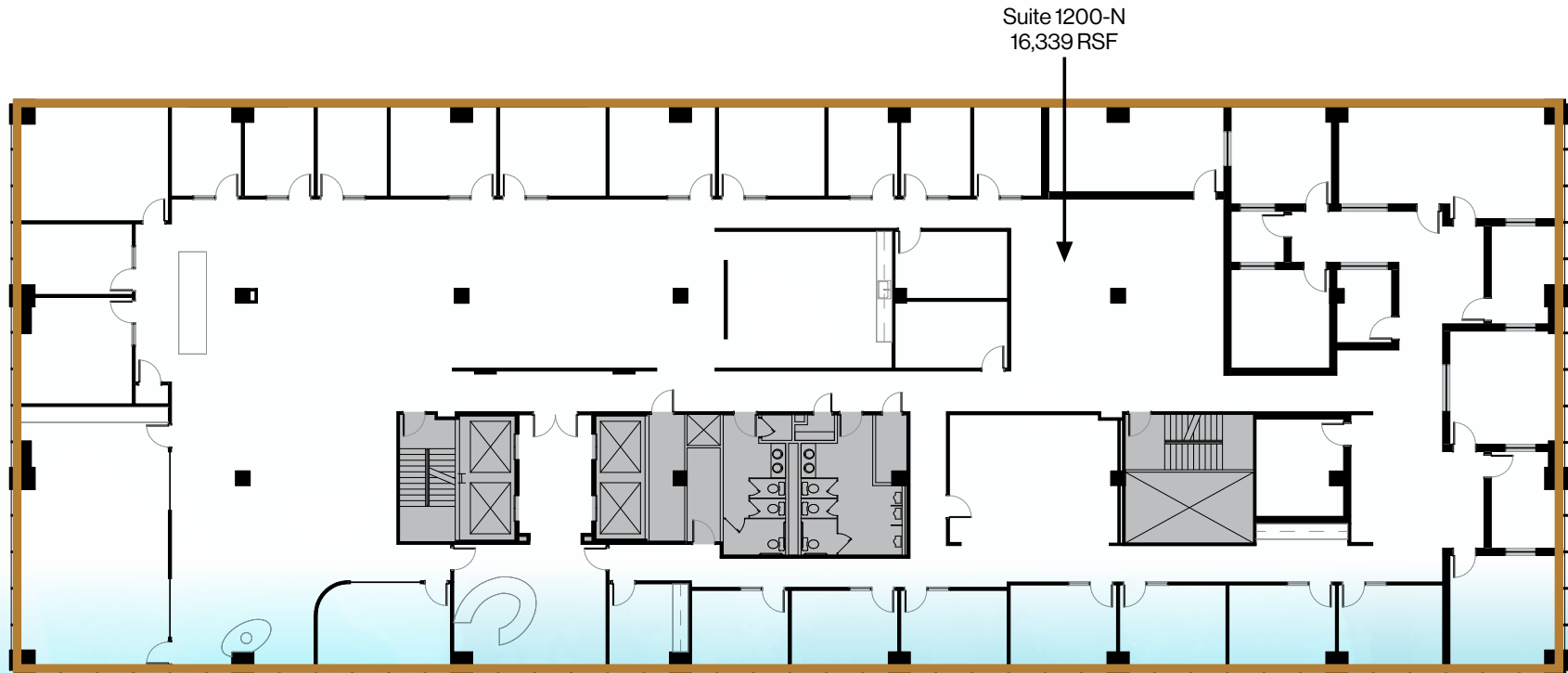
# GALLERIA

AT CHERRY CREEK

720 SOUTH COLORADO BLVD. GLENDALE, COLORADO

## 12TH FLOOR NORTH TOWER 16,339 RSF AVAILABLE

Unimpeded western and Cherry Creek views! Perimeter offices with several conference and open work space.



DAN BEER | Director | +1 303 813 6494 | dan.beer@cushwake.com  
MICHAEL COPPOLA | Senior Associate | +1 303 312 4212 | michael.coppola@cushwake.com

