



# Westwood Medical Sublease

## Nathan Pellow

Sr. Executive Vice President  
Lic. No. 01214721  
+1 213 532 3213  
nathan.pellow@colliers.com

## Michael Naumovitch

Associate Vice President  
Lic. No. 02018250  
+1 213 861 3342  
michael.naumovitch@colliers.com

[www.pellowofficeteam.com](http://www.pellowofficeteam.com)

Colliers  
865 S. Figueroa St, Suite 3500  
Los Angeles, CA 90017  
P: +1 213 627 1214  
colliers.com

# 10921 Wilshire Blvd Los Angeles, CA



Suite  
411



Lease Rate  
\$3.50 FSG



Available SF  
1,934



Availability  
Within 60 days



Term  
Through  
October 2025



Furniture  
Negotiable

Copyright © 2023 Colliers International. Information herein has been obtained from sources deemed reliable, however its accuracy cannot be guaranteed. The user is required to conduct their own due diligence and verification.

# For Sublease

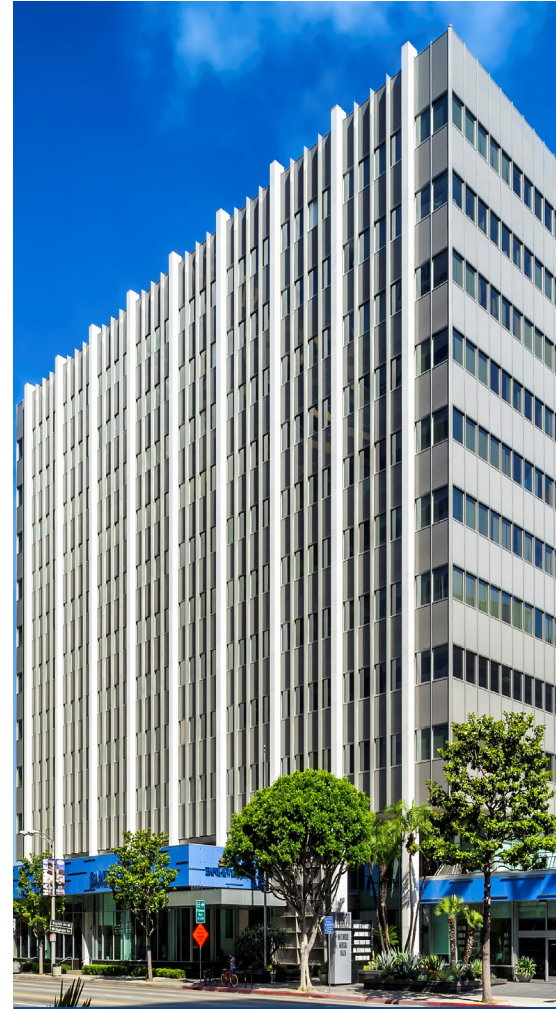
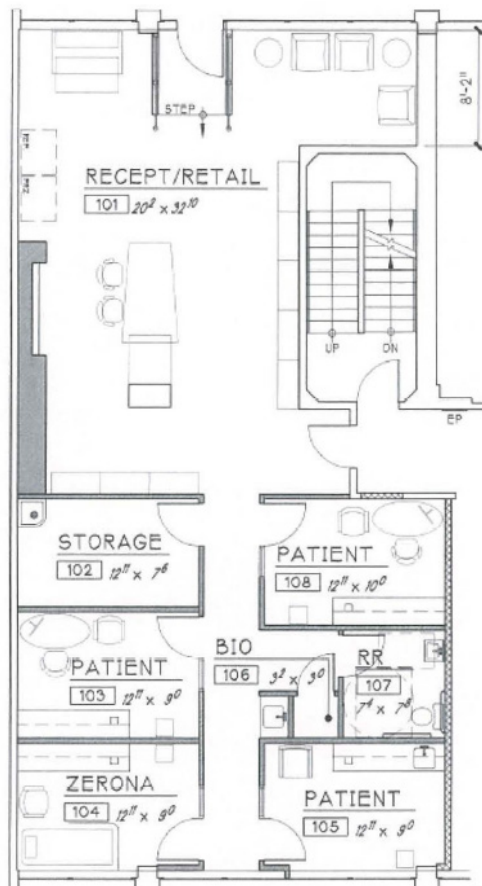
## Suite Highlights

- » Recently improved, turn-key medical suite
- » 4 patient rooms
- » Private restroom
- » Access to parking lot directly from suite
- » Abundant natural light

## Building Highlights

- » Award winning Class "A" Medical Office Building
- » LA Fitness, Chase Bank, and Pharmacy onsite
- » 24/7 On-site security
- » On-site parking with valet and attendant

## Floor Plan



### Contact us:

#### Nathan Pellow

Sr. Executive Vice President  
Lic. No. 01214721  
+1 213 532 3213  
nathan.pellow@colliers.com

#### Michael Naoumovitch

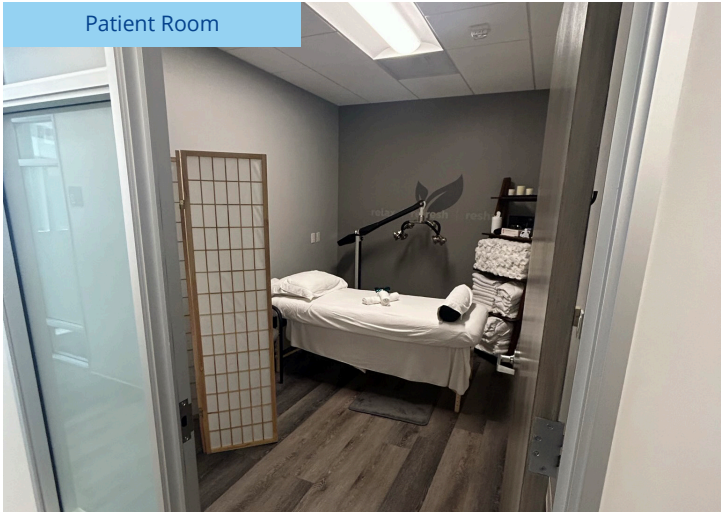
Associate Vice President  
Lic. No. 02018250  
+1 213 861 3342  
michael.naoumovitch@colliers.com

[www.pellowofficeteam.com](http://www.pellowofficeteam.com)

Colliers  
865 S. Figueroa St, Suite 3500  
Los Angeles, CA 90017  
P: +1 213 627 1214  
colliers.com

# Interior Photos

Patient Room



Patient Room



Suite Entry/Waiting Room



Hallway



Building Lobby



Door from Suite to Parking

