

FOR SALE | GROUND LEASE | BUILD TO SUIT

GATLIN PLAZA

2250 SW Gatlin Boulevard, Port St Lucie, FL 34953



±25,000 SF ANCHOR AND 38 ACRES RETAIL/MEDICAL/ENTERTAINMENT

Allan Carlisle
SENIOR DIRECTOR
allancarlisle@katzretail.com
(561) 385-4791




EXCLUSIVE RETAIL LEASING
KATZ & ASSOCIATES
RETAIL REAL ESTATE ADVISORS

Daniel Solomon, CCIM
PRINCIPAL
danielsolomon@katzretail.com
(954) 401-2181

Jon Cashion
PRINCIPAL
joncashion@katzretail.com
(561) 302-7071

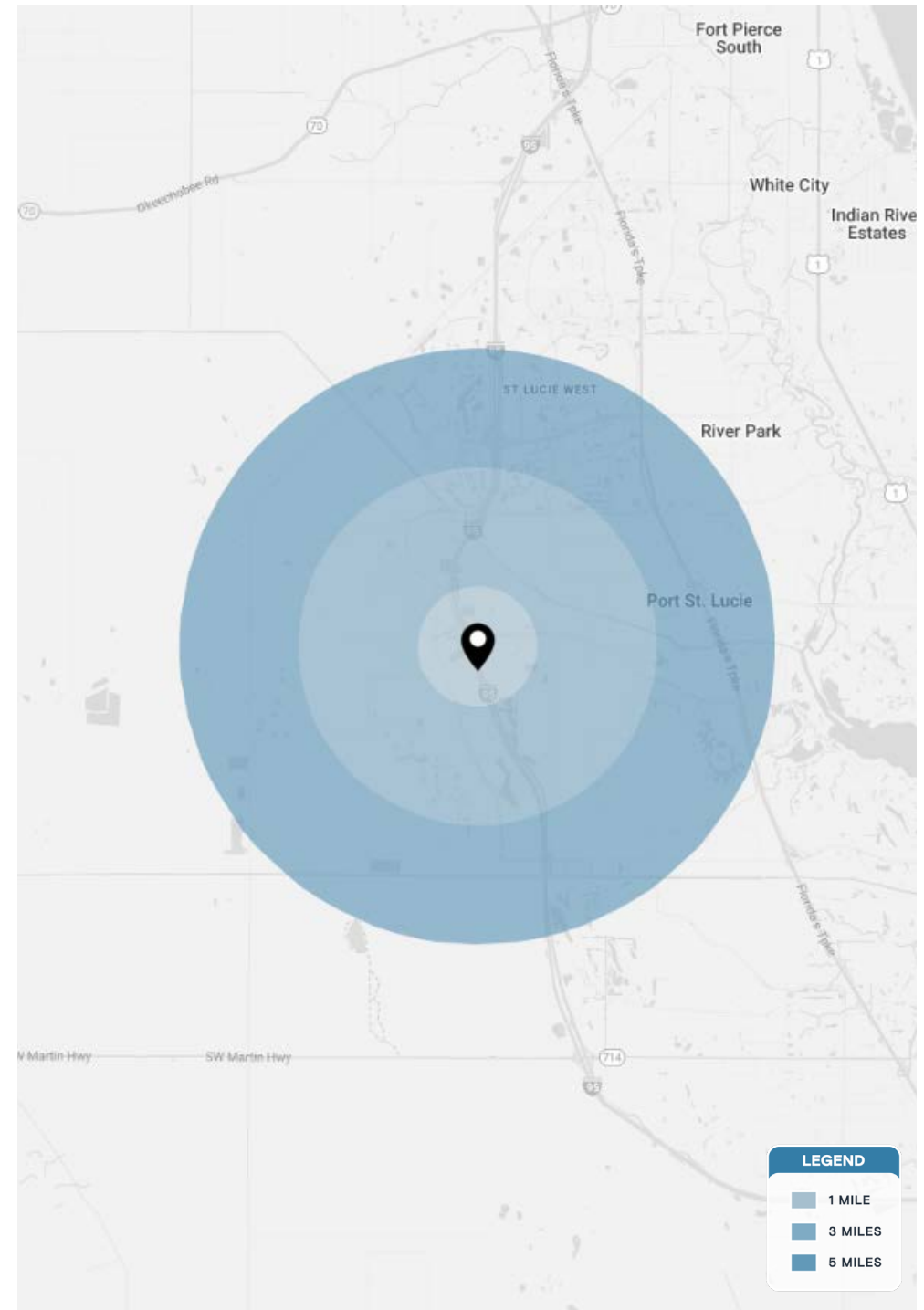
Property Overview

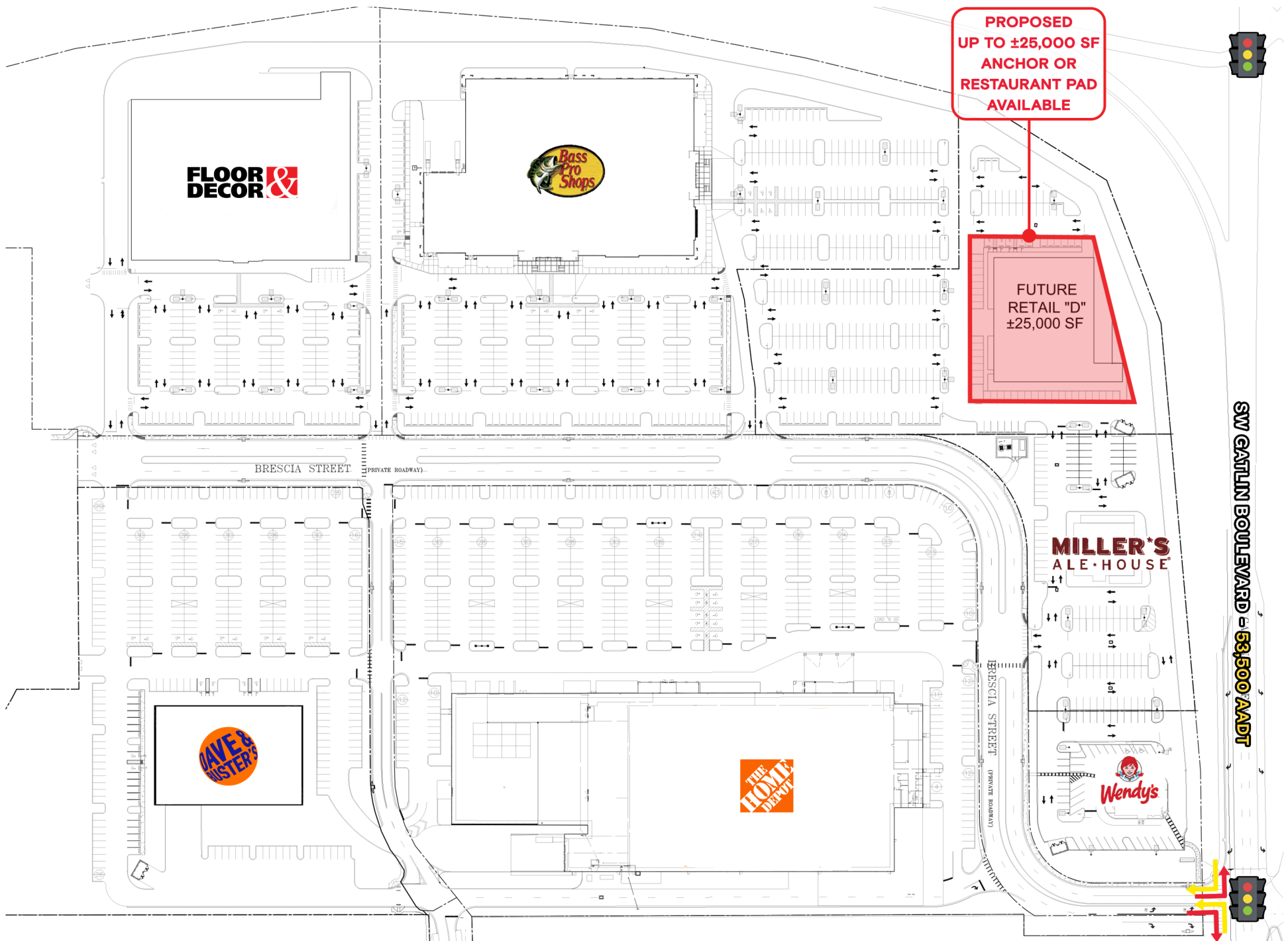
HIGHLIGHTS

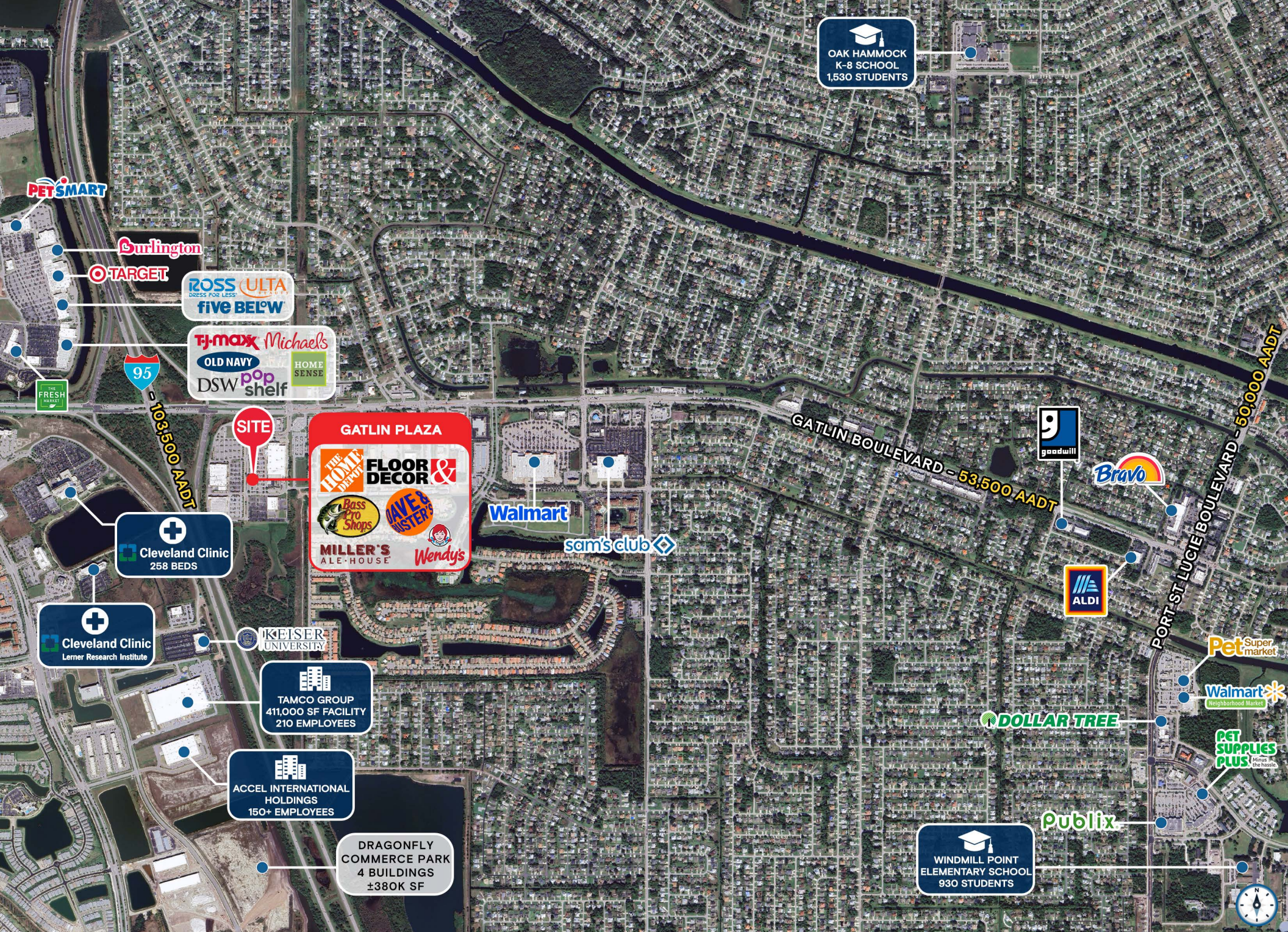
- For sale, ground lease or build to suit
- Up to ±25,000 SF anchor or restaurant pad available
- 38 acres proposed future development; ±300,000 SF of retail, medical and entertainment available
- Port St Lucie is one of the fastest growing cities in the state of Florida with no signs of stopping
- Join: **FLOOR & DECOR**   **MILLER'S ALE HOUSE** 

DEMOGRAPHICS	1 MILE	3 MILES	5 MILES
POPULATION	5,950	80,353	159,990
HOUSEHOLDS	2,147	30,279	59,391
EMPLOYEES	1,177	7,897	23,822
AVERAGE HH INCOME	\$99,726	\$111,094	\$106,613

	5 MINUTES	10 MINUTES	15 MINUTES
POPULATION	34,549	131,059	210,269
HOUSEHOLDS	12,754	48,312	77,541
EMPLOYEES	4,518	18,442	28,768
AVERAGE HH INCOME	\$105,155	\$107,262	\$104,411









Contact Brokers

Allan Carlisle
SENIOR DIRECTOR
allancarlisle@katzretail.com
(561) 385-4791

Daniel Solomon, CCIM
PRINCIPAL
danielsolomon@katzretail.com
(954) 401-2181

Jon Cashion
PRINCIPAL
joncashion@katzretail.com
(561) 302-7071



KATZ & ASSOCIATES

RETAIL REAL ESTATE ADVISORS

katzretail.com

The information herein was obtained from third parties and has not been independently verified by Katz & Associates. Any and all interested parties should have their choice of experts inspect the property and verify all information. Katz & Associates makes no warranties or guarantees as to the information given to any prospective buyer or tenant. REV: 01.07.26