

# Downtown Retail



## 19,320 SF on $\pm 0.67$ acres

FOR SALE | 515 S. Walnut Street | Bloomington, IN

- **Offering price: \$1,750,000**
- Located on the southside of downtown Bloomington
- High visibility location on Walnut Street, directly across from Post Office
- Includes two surface lots with approximately 20-25 parking stalls
- Three building areas, each with its own opportunities
- Zoned Mixed Use Downtown, Downtown Edges (MD-DE), See page 46 here: [Zoning](#)

AVAILABLE  
Q1 2026

**DAVE HARSTAD**

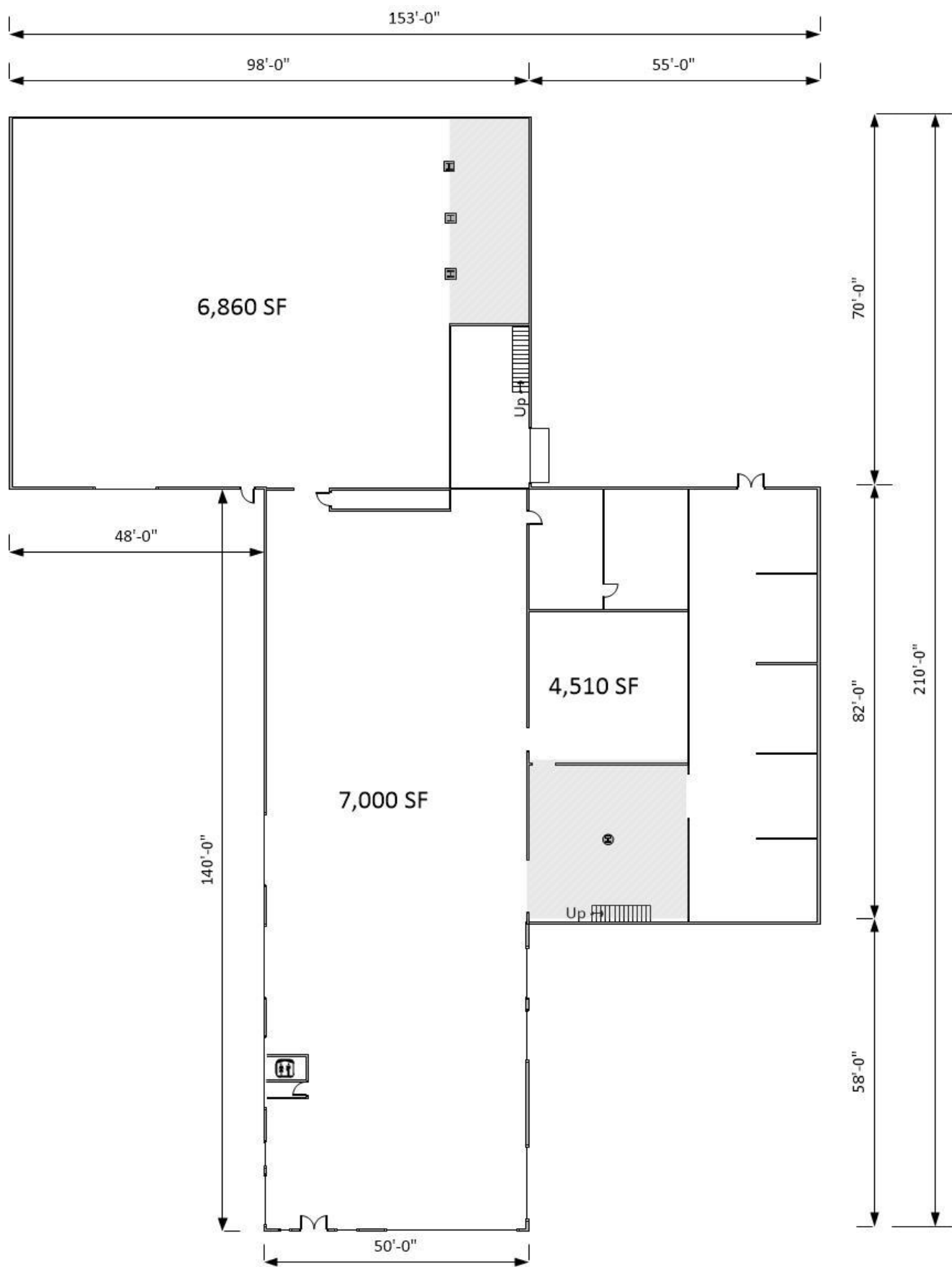
Senior Vice President | Bloomington, IN

812.361.1230  
dave.harstad@colliers.com

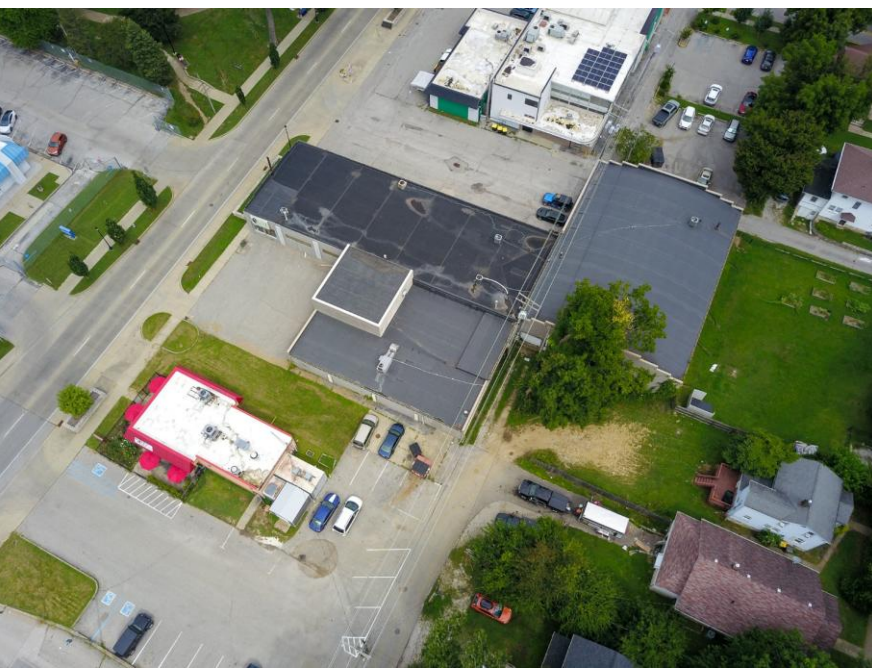
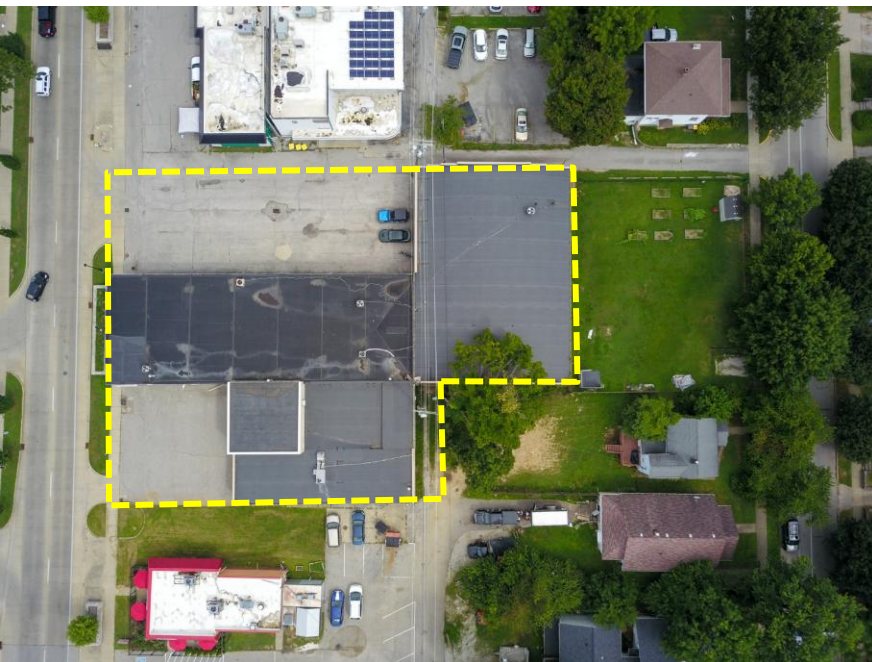


colliers.com

# Floor Plan







## Property Taxes and Assessments

- 53-08-04-200-051.000-009 (north)
  - Assessed at \$839,800
  - \$12,711 pay 2025 tax
- 53-08-04-214-012.000-009 (south)
  - Assessed at \$182,000
  - \$1,342 pay 2025 tax



# Interior

- **Main storeroom:** 140' x 150' with display windows/entrance and restroom (upper picture). This area could have significantly more natural light, as exterior windows are currently covered.
- **South storeroom:** 82' x 55' with 1,510 SF upper level (middle picture)
- **Back storeroom:** 98' x 70' bow truss building with 25' high ceiling (currently lower due to acoustical tile drop ceiling). Has overhead door/delivery area and section with unfinished second level storage (lower picture)





## AERIAL MAP



The area surrounding 515 S. Walnut is at the beginning of a renaissance.

Construction of the Hopewell neighborhood on the old Bloomington Hospital site is well underway. The new 100,000 SF Bloomington Convention Center is under construction and will open in 2027. A new 45,000 SF Beacon shelter is under construction over a mile to the west, and will include a greatly expanded day shelter.

**DAVE HARSTAD**

Senior Vice President | Bloomington, IN

812.361.1230

dave.harstad@colliers.com



[colliers.com/indianapolis](https://colliers.com/indianapolis)