

PRIME STOREFRONT FOR LEASE RETAIL / SERVICE / CAFÉ / OFFICE



PROPERTY HIGHLIGHTS

- Fantastic signage and visibility on W. Burnside
- New storefront, facade and windows
- Commercial mini split HVAC system
- Immediate access to I-405 freeway & MAX
- Two blocks to Providence Park Stadium
- Retail, service, cafe (no hood) or creative office
- Two restrooms included + fire sprinklered storage
- Population nearly 55,000 within 1 mile radius

ADDRESS: 1541 W. Burnside Street, Portland

AVAILABLE: 1,638 RSF - \$3,600/month including NNN

DIVISIBLE: 820 RSF - \$1,800/month including NNN

ADDITIONAL RENT: Tenant pays separate metered electric

ZONING: CX (Central Commercial)

TRAFFIC COUNTS: 19,648 ADT (2020)

LOCATION: Highly trafficked Stadium District, Goose Hollow

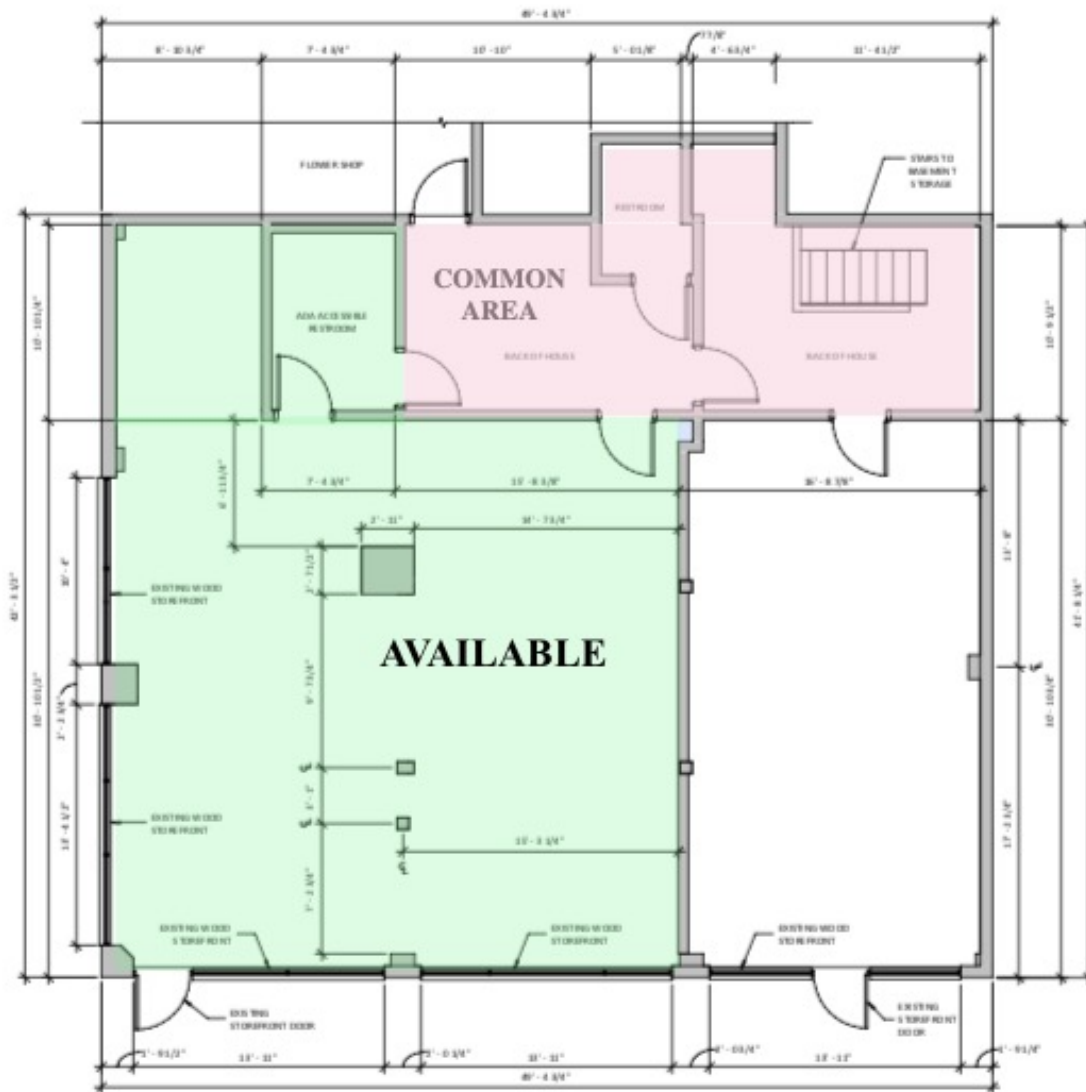


For more information or a property tour contact:

Erika Yoshida
Principal Broker, MBA
503.781.7789
Erika@metronw.com



FLOOR PLAN



For more information or a property tour contact:

Erika Yoshida
 Principal Broker, MBA
 503.781.7789
 Erika@metronw.com

