



## FOR LEASE

1935 BRANDON COURT, UNIT A  
GLENDALE HEIGHTS, IL

CONTACT US TODAY:

**Andrea Hauger**

847-706-7153

ahauger@owenwagener.com

Owen Wagener & Co.

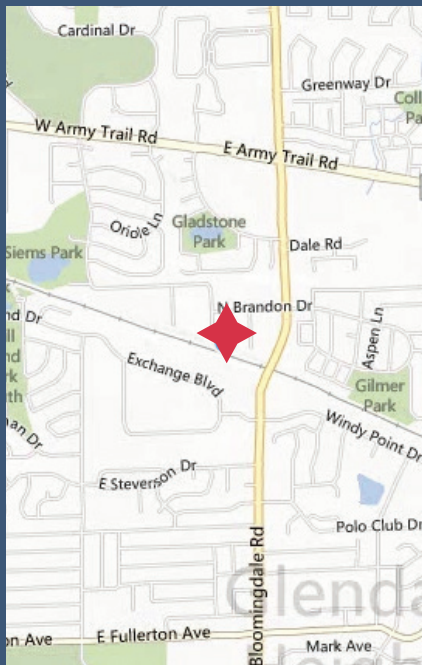
37 Sherwood Terrace

Suite 122

Lake Bluff, IL 60044

www.owenwagener.com

### MULTI-TENANT INDUSTRIAL



### SPECS:

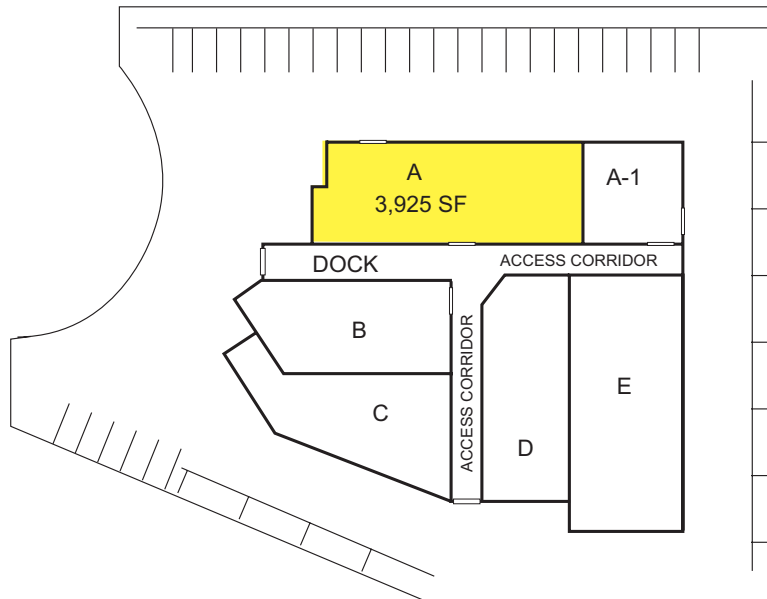
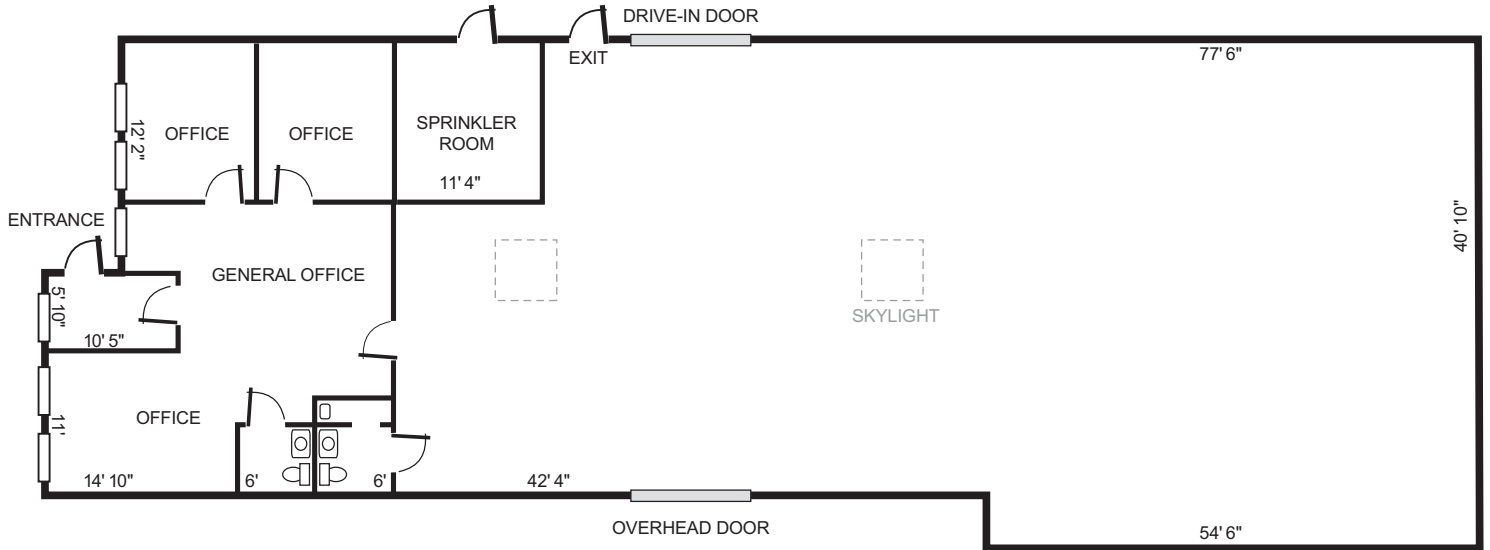
- -DRIVE-IN DOOR AND COMMON DOCK
- -TWO PRIVATE OFFICES W/ LARGE COMMON AREA
- -BUILT-IN COFFEE BAR IN OFFICE AREA
- -OFFICES ARE CARPETED AND AIR-CONDITIONED
- -SKYLIGHT IN WAREHOUSE -- GREAT NATURAL LIGHT
- -MINUTES TO I-355, I-90, ELGIN O'HARE

Space Available:	3,925 SF
Office Size:	875 SF
Total Building Size:	19,484 SF
Parking:	Ample
Description:	Multi-Tenant Industrial
Heat:	Gas Forced Air
Ceiling Height:	15'
Power:	120/208 VAC 3-Phase, 200 Amp
Loading:	1 Drive-in Door & Interior Truck Dock w/ Leveler
Zoning:	Industrial
Sprinklered:	Yes
Monthly Rate:	\$4,579 (\$14.00/SF) Modified Gross
Refuse Disposal:	\$70.00/month

All information herein is from sources deemed reliable but not guaranteed accurate. Subject to errors, omissions, and to changes of price and terms, prior sale or lease, all without notice.

# 1935 BRANDON COURT, UNIT A GLENDALE HEIGHTS, IL

3,925 SF



YOUR CHICAGOLAND COMMERCIAL  
REAL ESTATE EXPERT, SINCE 1964.