



**REYES &
ELSAMAD**
REAL ESTATE GROUP

FOR SALE: 100% Occupied Medical
Office Property
23-22 30th Avenue, Astoria NY



INVESTMENT HIGHLIGHTS

- For sale: 9,669 SF | two-story | 100% Occupied Medical Office Property
- Two tenants with long term leases that are both Triple Net (NNN)
- Mount Sinai Hospital occupies 70% of the property and utilizes this asset for additional operational and medical use. Mount Sinai Hospital is located across the street and is one of the largest hospitals in Queens.
- PT Motion is the second tenant who occupies 30% of the property. This tenant is part of Mount Sinai's rehab network which includes over 55 locations across 4 states.
- Fully built out property with low deferred maintenance
- Transportation: The N-W train lines are 3 blocks away: 30 Ave Station
- *Contact us for the rent roll and expenses | 718-496-9820*



**REYES &
ELSAMAD**
REAL ESTATE GROUP

23-22 30th Avenue, Astoria NY
For Sale: Inquire for pricing

23-22 30th Ave

Astoria, NY 11102



Perfect 1031 Exchange Property: 100% Occupied Medical Office

Reyes & Elsamad Real Estate Group has been retained on an exclusive basis to sell a two-story, 100% occupied medical office building located at 23-22 30th Avenue, Astoria Queens, NY. This property offers an investor a core investment strategy over the course of the next 13 years. There are two tenants under triple net leases that are currently paying 100% of the property taxes, all utilities, CAM plus maintenance. With regards to the leases; The Mount Sinai Hospital of Queens has 3 years on the lease with two - (5) year options for a total of 13 years remaining. They occupy 6,500 SF of medical office space.

The second tenant named Motion-PT has a 7-year lease plus one - (5) year option for a total of 12 years remaining. This tenant is part of Mount Sinai's rehab network which includes over 55 locations across 4 states. They provide physical and speech therapy services for all ages. They occupy 3,169 SF of medical office space.

The property has been fully renovated and properly maintained over the past 11 years which includes but not limited to a new roof, new facade and built-to-suit medical offices thus limiting any deferred maintenance.



For Sale: Inquire

Property Details

Address	23-22 30 th Ave, Astoria NY
Location	Corner of 30 Ave and Crescent Street
Block Lot	0572 0035
Lot Dimensions	37.6 x 138.4
Lot SF	5,203.84 SF
Building Dimensions	30 x 119
Stories	2.0
Zoning	R6A-R6B
Residential FAR	3.9
Community FAR	3.0
Residential Buildable	20,295
Property Taxes (2024)	\$91,858.08
Number of Tenants	2
Currently Tenancy	100%

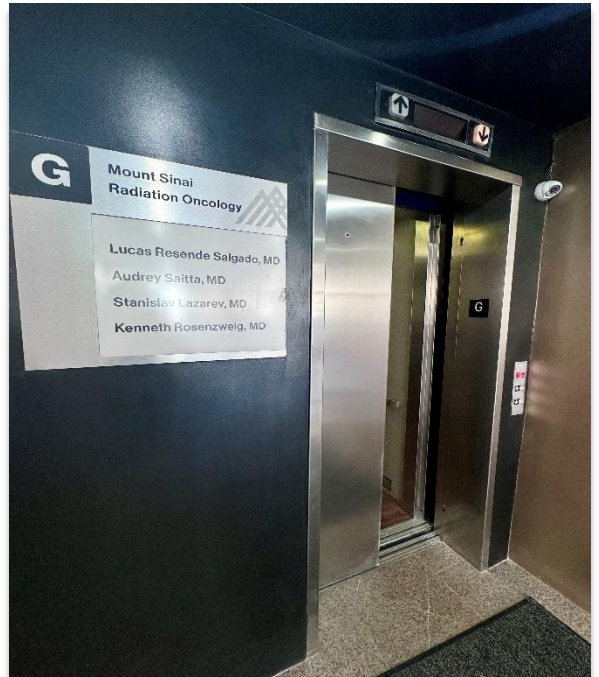
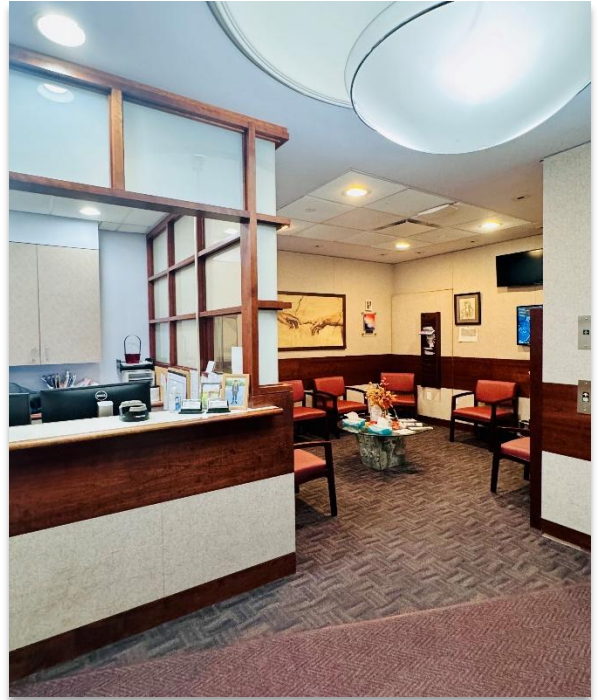
For more information, please contact:

Julio Reyes

Commercial Investments
Licensed Real Estate Broker
julio@reyeselsamad.com | 718.496.9820

23-22 30th Ave

Astoria, NY 11102



For more information, please contact:

Julio Reyes

Commercial Investments
Licensed Real Estate Broker
julio@reyeselsamad.com | 718.496.9820

23-22 30th Ave

Astoria, NY 11102



CONFIDENTIALITY & DISCLAIMER

The information contained in the following offering memorandum (OM) is proprietary and strictly confidential. It is intended to be reviewed only by the party receiving it from Reyes & Elsamad Real Estate Group, LTD (“Reyes & Elsamad”). This O.M has been prepared to provide an overall summary to prospective purchasers and to establish only a preliminary level of interest in the subject property. The information contained herein is not a substitute for a thorough due diligence investigation. Reyes & Elsamad makes no warranty or representation, with respect to the income or expenses for the subject property, the future projected financial performance of the property, the size and square footage of the property and improvements, the presence or absence of contaminating substances, PCB's or asbestos, the compliance with State and Federal regulations, the physical condition of the improvements thereon, or the financial condition or business prospects of any tenant, or any tenant’s plans or intentions to continue its occupancy of the subject property. The information contained in this offering memorandum has been obtained from sources we deem reliable; however, Reyes & Elsamad has not verified and will not verify any of the information contained herein, nor has Reyes & Elsamad conducted any investigation regarding these matters and makes no warranty or representation whatsoever regarding the accuracy or completeness of the information provided. All potential buyers must take appropriate measures to verify all the information set forth herein.

For more information, please contact:

Julio Reyes

Commercial Investments
Licensed Real Estate Broker
julio@reyeselsamad.com | 718.496.9820