



110B Medical Circle West Columbia, SC 29169

Property Description

This suite is located on the first floor of a building situated directly across from Lexington Medical Center and adjacent to Interstate 26 and Highway 378 interchange accessible only through a signalized intersection. The previous use was a physical therapy practice. The building is shared with MEDcare Urgent Care.

Property Highlights

- SF ±3,047
- Zoning: C2
- Traffic Count: 27,300 VPD (Hwy 378)
86,500 VPD (I-26)
- Lease Rate: \$12.00/SF NNN (NNN's are estimated at \$4.23/SF)

For more information:

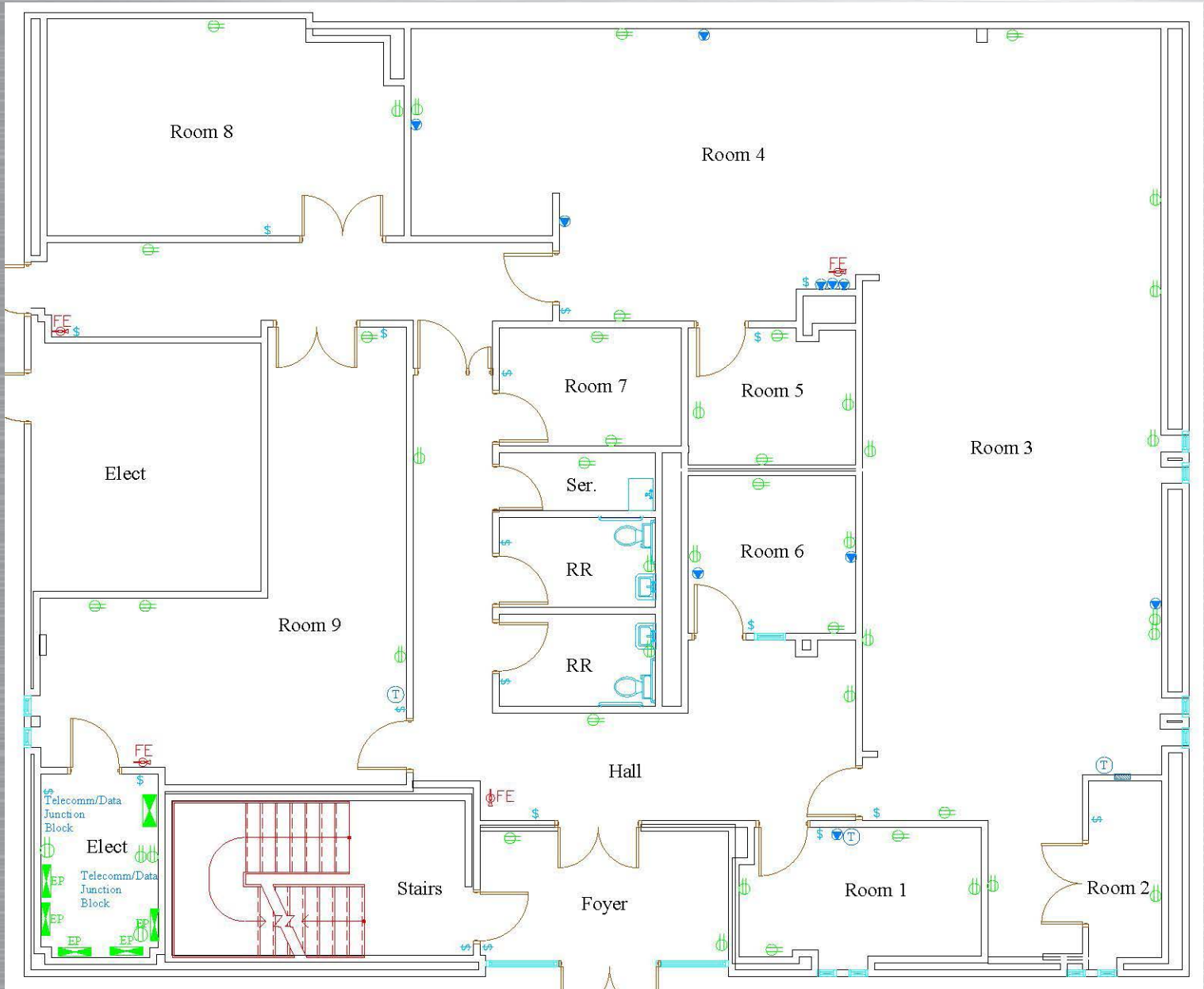
Jack Springs

803.744.9882 • jsprings@naicolumbia.com

Patrick Chambers

803.744.9857 • pchambers@naicolumbia.com

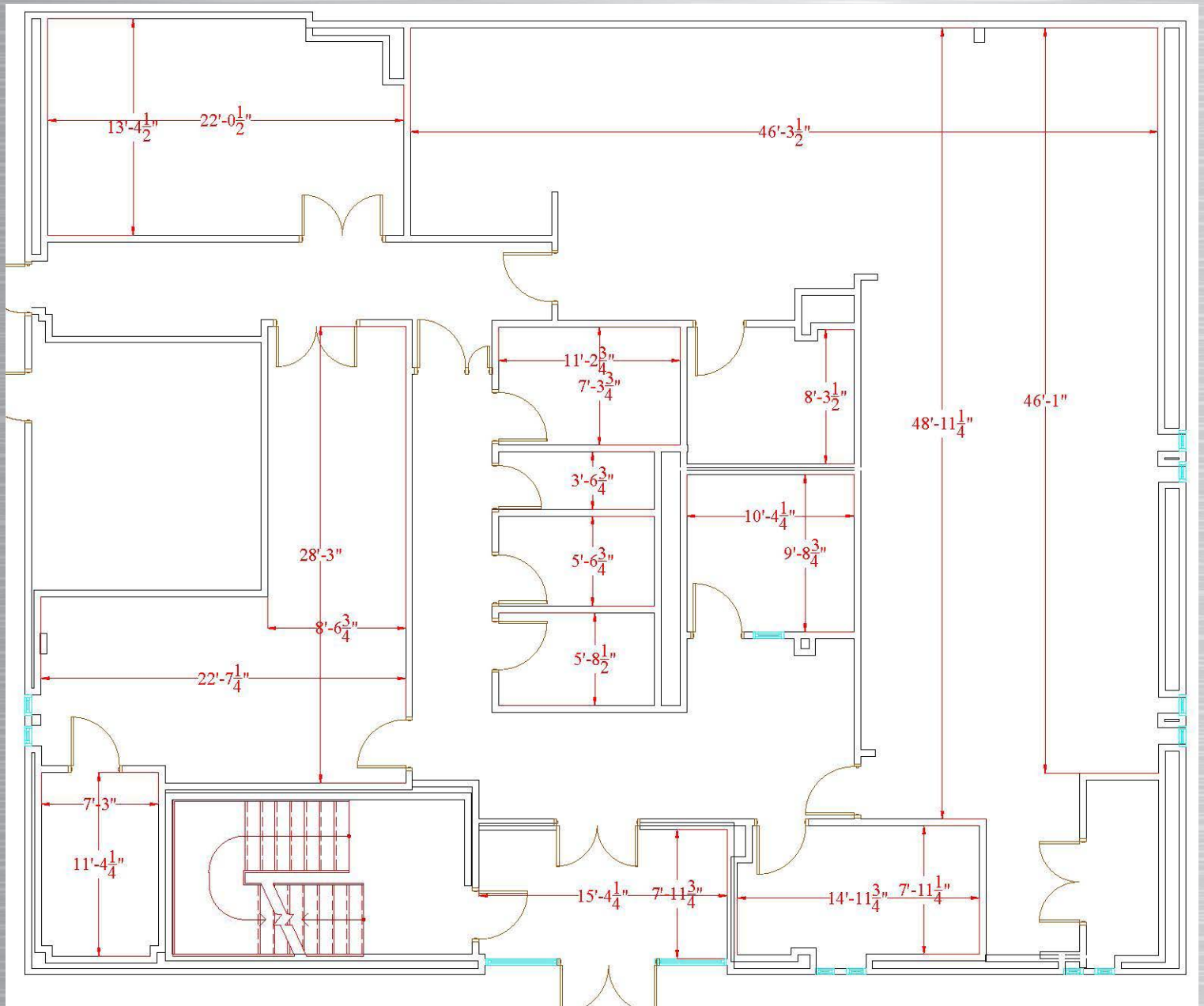
Floor Plan (Downstairs)



NO WARRANTY OR REPRESENTATION, EXPRESS OR IMPLIED, IS MADE AS TO THE ACCURACY OF THE INFORMATION CONTAINED HEREIN, AND THE SAME IS SUBMITTED SUBJECT TO ERRORS, OMISSIONS, CHANGE OF PRICE, RENTAL OR OTHER CONDITIONS, PRIOR SALE, LEASE OR FINANCING, OR WITHDRAWAL WITHOUT NOTICE, AND OF ANY SPECIAL LISTING CONDITIONS IMPOSED BY OUR PRINCIPALS NO WARRANTIES OR REPRESENTATIONS ARE MADE AS TO THE CONDITION OF THE PROPERTY OR ANY HAZARDS CONTAINED THEREIN ARE ANY TO BE IMPLIED.

807 Gervais Street, Suite 200
Columbia, SC 29201
803.254.0100
naicolumbia.com

Floor Plan (Downstairs)



NO WARRANTY OR REPRESENTATION, EXPRESS OR IMPLIED, IS MADE AS TO THE ACCURACY OF THE INFORMATION CONTAINED HEREIN, AND THE SAME IS SUBMITTED SUBJECT TO ERRORS, OMISSIONS, CHANGE OF PRICE, RENTAL OR OTHER CONDITIONS, PRIOR SALE, LEASE OR FINANCING, OR WITHDRAWAL WITHOUT NOTICE, AND OF ANY SPECIAL LISTING CONDITIONS IMPOSED BY OUR PRINCIPALS NO WARRANTIES OR REPRESENTATIONS ARE MADE AS TO THE CONDITION OF THE PROPERTY OR ANY HAZARDS CONTAINED THEREIN ARE ANY TO BE IMPLIED.

807 Gervais Street, Suite 200
Columbia, SC 29201
803.254.0100
naicolumbia.com

