

AVAILABLE FOR LEASE

NEW CONSTRUCTION IN SUMMERVILLE! 2ND FLOOR OFFICE SPACE

Join *Myles and Jun Yakitori* at their new location | 212 W 4th Nth St, Summerville, SC 29483



PROPERTY FEATURES

- Two excellent second floor office suites available for lease in mixed-use building in Summerville, SC
- New construction, to be delivered Q4 2024
- Close to local medical and legal offices and within walking distance to historic downtown Summerville
- Future home of well-known and established Summerville restaurant, Myles and Jun Yakitori
- Located behind the Piggly Wiggly on the corner of West 4th North Street and North Pine Street
- Shared second floor amenities and offsite parking for office suites
- **FOR LEASE: \$26-28/PSF**

SUITE DETAILS

- **OFFICE | 2nd Floor:** Unit C - 2,190± SF
- **OFFICE | 2nd Floor:** Unit D - 2,701± SF

2024 DEMOGRAPHICS

	1 Mile	3 Miles	5 Miles
Population	6,216	50,915	135,641
No. of Households	2,691	20,773	52,832
Avg. HH Income	\$89,489	\$104,718	\$105,765

JOIN AREA BUSINESSES



For more information, contact:

LAUREN A. WATKINS | ASSOCIATE

843 224 3990

lwatkins@twinriverscap.com

TWIN RIVERS CAPITAL

656 Ellis Oak Avenue, Suite 201

Charleston, SC 29412

twinriverscap.com

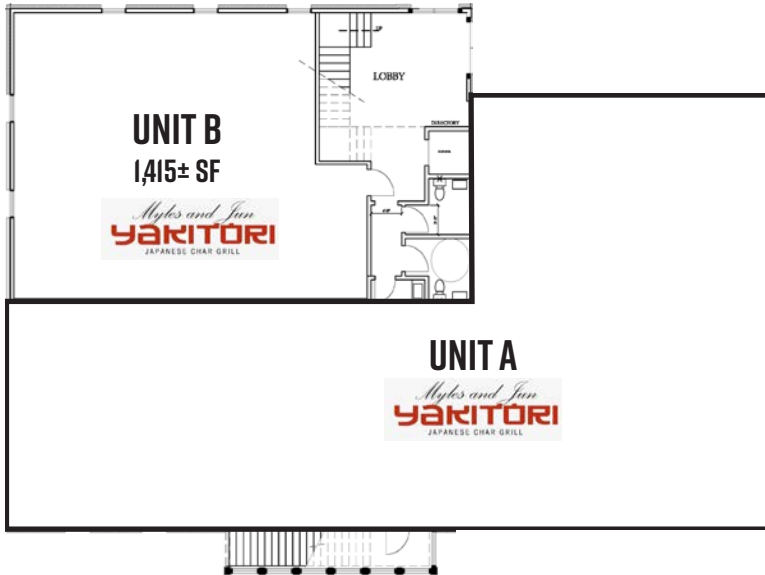
AVAILABLE FOR LEASE

NEW CONSTRUCTION IN SUMMERVILLE! 2ND FLOOR OFFICE SPACE

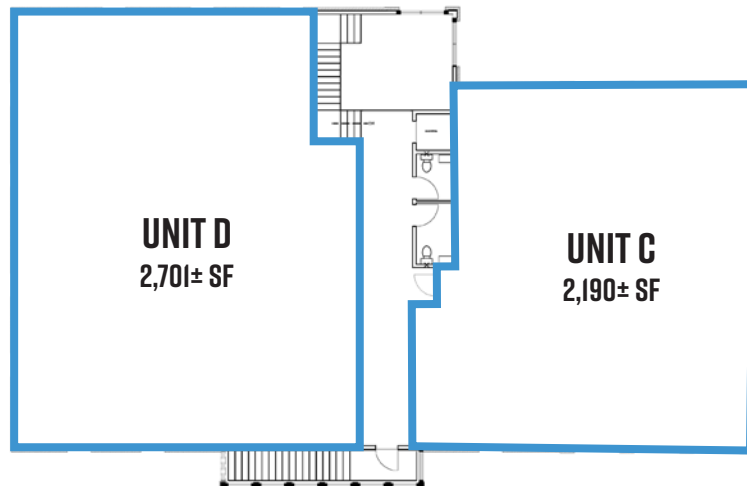


Join *Myles and Jun Yakitori* at their new location | 212 W 4th Nth St, Summerville, SC 29483

FLOOR PLAN | FIRST FLOOR TENANT | MYLES AND JUN YAKITORI



FLOOR PLAN | SECOND FLOOR OFFICE SPACE



For more information, contact:

LAUREN A. WATKINS | ASSOCIATE

843 224 3990

lwatkins@twinriverscap.com

TWIN RIVERS CAPITAL

656 Ellis Oak Avenue, Suite 201

Charleston, SC 29412

twinriverscap.com

AVAILABLE FOR LEASE

NEW CONSTRUCTION IN SUMMERVILLE! 2ND FLOOR OFFICE SPACE

Join *Myles and Jun Yakitori* at their new location | 212 W 4th Nth St, Summerville, SC 29483



UNIT D (OFFICE) UNDER CONSTRUCTION



UNIT C (OFFICE) UNDER CONSTRUCTION



EXTERIOR UNDER CONSTRUCTION



BUILDING NEARING COMPLETION

For more information, contact:

LAUREN A. WATKINS | ASSOCIATE
843 224 3990
lwatkins@twinriverscap.com

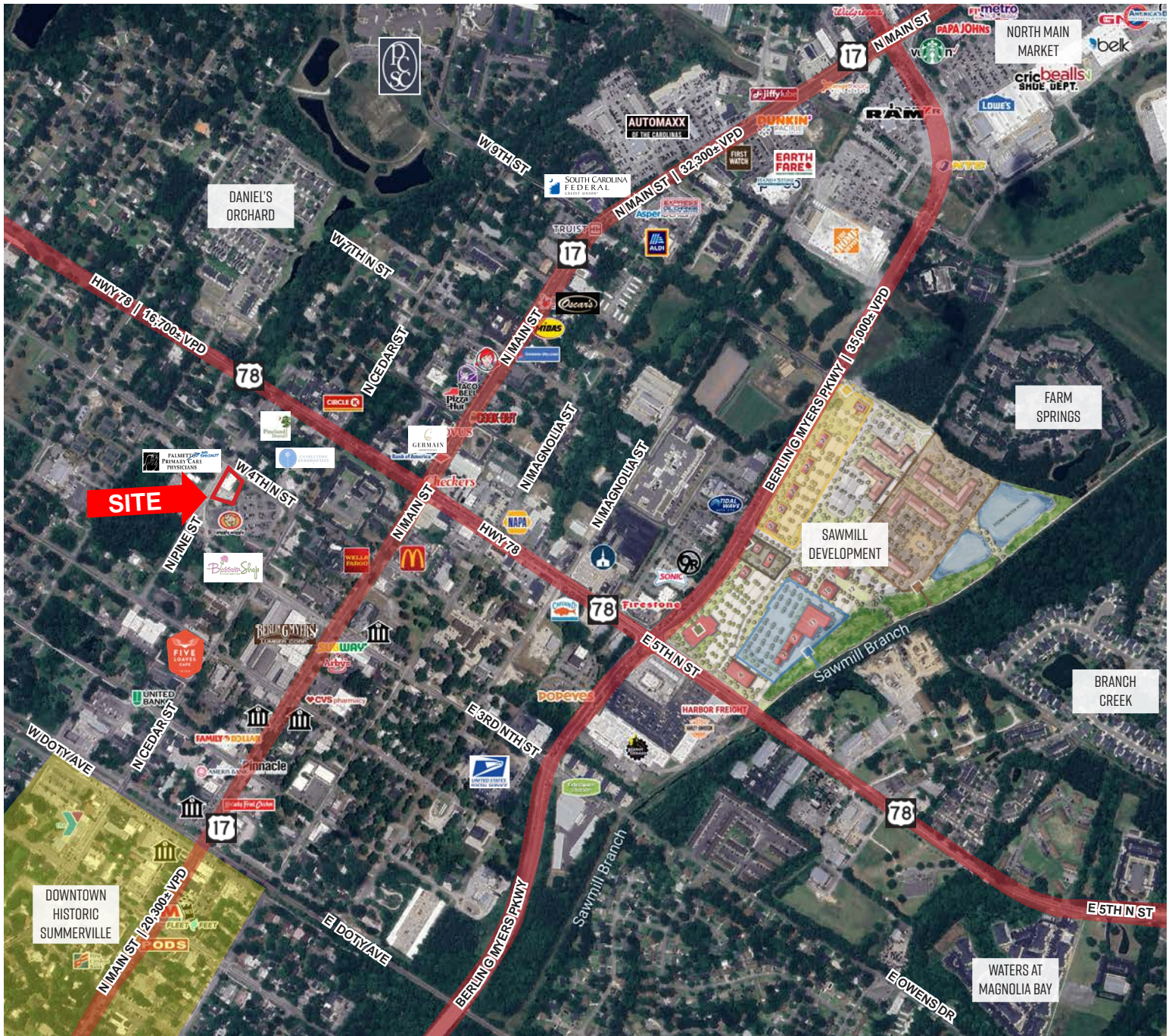
TWIN RIVERS CAPITAL
656 Ellis Oak Avenue, Suite 201
Charleston, SC 29412
twinriverscap.com

AVAILABLE FOR LEASE

NEW CONSTRUCTION IN SUMMERVILLE! 2ND FLOOR OFFICE SPACE



Join *Myles and Jun Yakitori* at their new location | 212 W 4th Nth St, Summerville, SC 29483



For more information, contact:

LAUREN A. WATKINS | ASSOCIATE

843 224 3990

lwatkins@twinriverscap.com

TWIN RIVERS CAPITAL

656 Ellis Oak Avenue, Suite 201

Charleston, SC 29412

twinriverscap.com

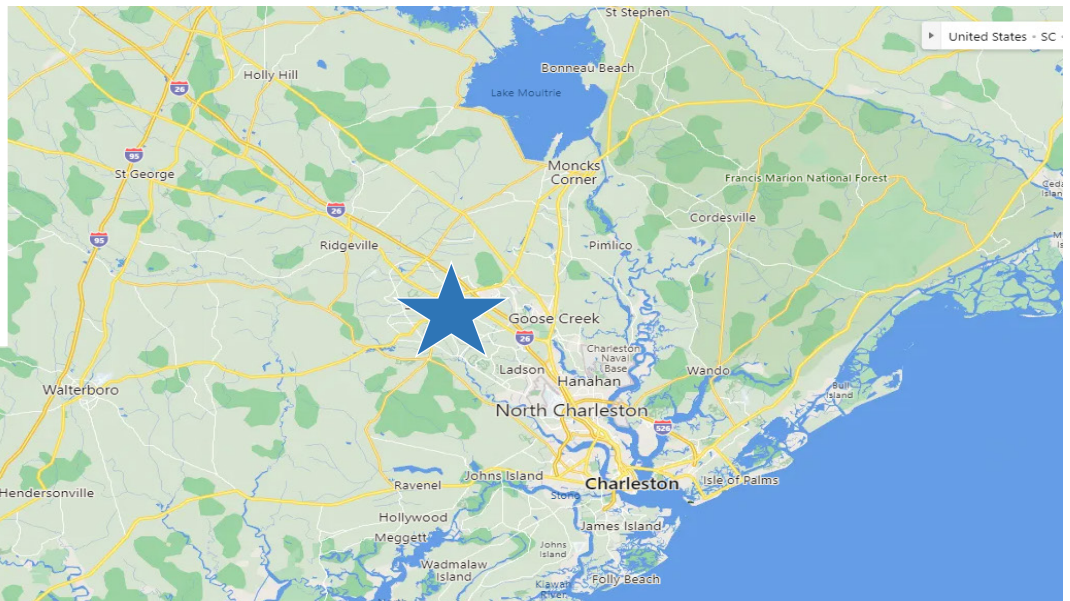
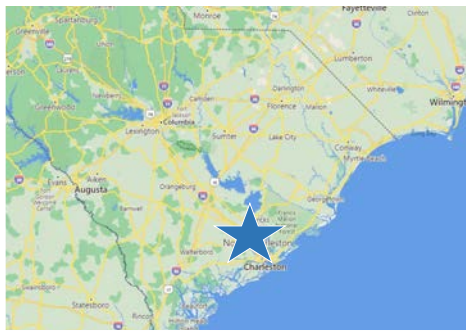
© 2024 Twin Rivers Capital, LLC. All rights reserved. This information has been obtained from sources believed reliable, but has not been verified for accuracy or completeness. You should conduct a careful, independent investigation of the property and verify all information. Any reliance on this information is solely at your own risk. Twin Rivers Capital and the Twin Rivers Capital logo are service marks of Twin Rivers Capital, LLC. All other marks displayed on this document are the property of their respective owners, and the use of such logos does not imply any affiliation with or endorsement of Twin Rivers Capital. Photos herein are the property of their respective owners. Use of these images without the express written consent of the owner is prohibited.

AVAILABLE FOR LEASE

NEW CONSTRUCTION IN SUMMERVILLE! 2ND FLOOR OFFICE SPACE



Join *Myles and Jun Yakitori* at their new location | 212 W 4th Nth St, Summerville, SC 29483



For more information, contact:

LAUREN A. WATKINS | ASSOCIATE

843 224 3990

lwatkins@twinriverscap.com

TWIN RIVERS CAPITAL
656 Ellis Oak Avenue, Suite 201
Charleston, SC 29412
twinriverscap.com

© 2024 Twin Rivers Capital, LLC. All rights reserved. This information has been obtained from sources believed reliable, but has not been verified for accuracy or completeness. You should conduct a careful, independent investigation of the property and verify all information. Any reliance on this information is solely at your own risk. Twin Rivers Capital and the Twin Rivers Capital logo are service marks of Twin Rivers Capital, LLC. All other marks displayed on this document are the property of their respective owners, and the use of such logos does not imply any affiliation with or endorsement of Twin Rivers Capital. Photos herein are the property of their respective owners. Use of these images without the express written consent of the owner is prohibited.