

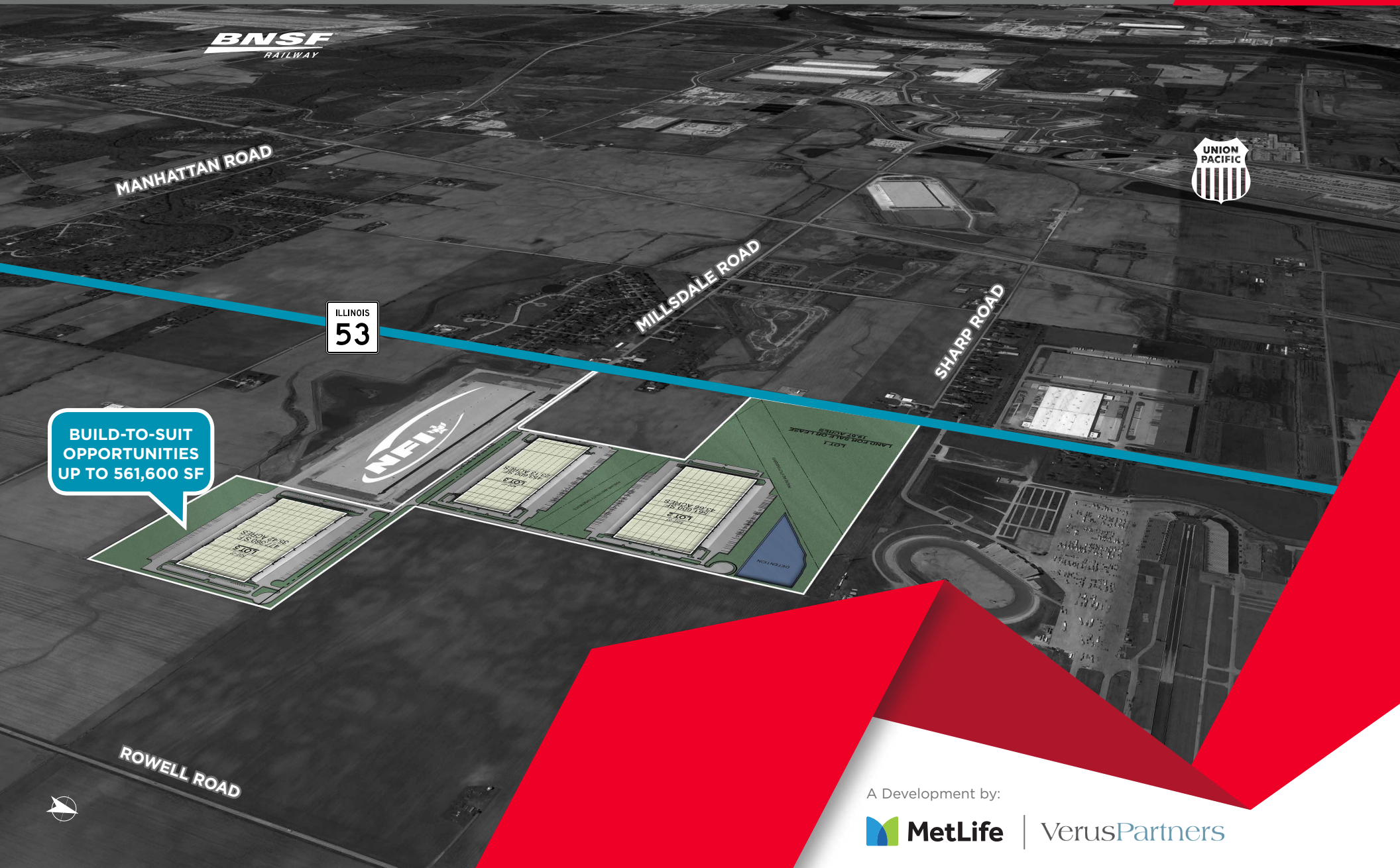
JOLIET LOGISTICS PARK

MILLSDALE RD & ROUTE 53, JOLIET, IL

±151 Acres Available For Sale or Build-To-Suit Development



**FLEXIBLE.
ACCESSIBLE.
AVAILABLE.**

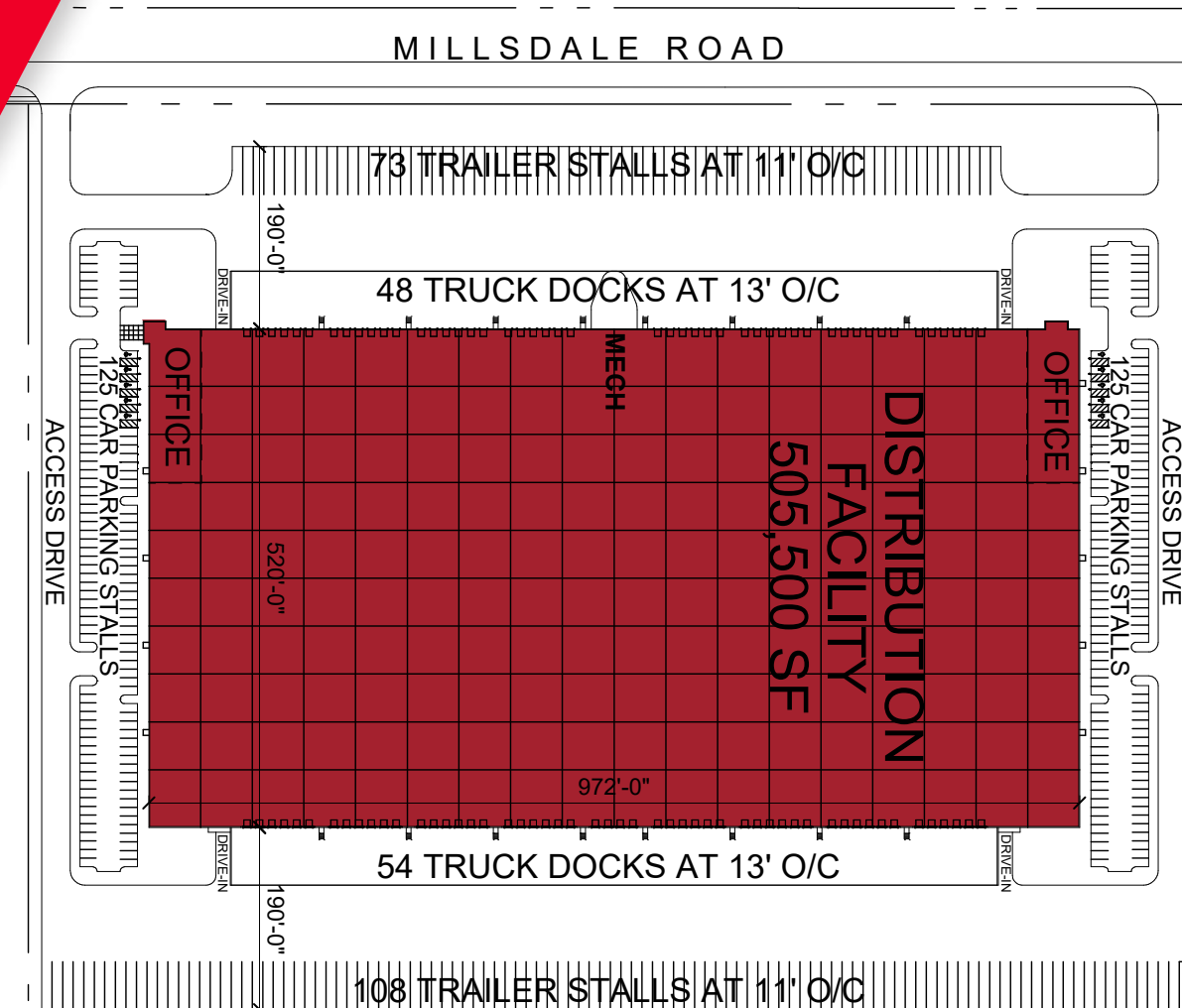


A Development by:



JOLIET LOGISTICS PARK

MILLSDALE RD & ROUTE 53, JOLIET, IL



LOT 5 BUILDING



505,500 SF

Space Available



40'

Clear Height



102

Exterior Docks



4

Drive-in Doors



181

Trailer Parking
Stalls



190'

Truck Court



250

Car Parking
Stalls



50' X 54'

Column Spacing
(60' Staging)

JASON WEST, SIOR
Executive Vice Chair
+1 847 518 3210
jason.west@cushwake.com

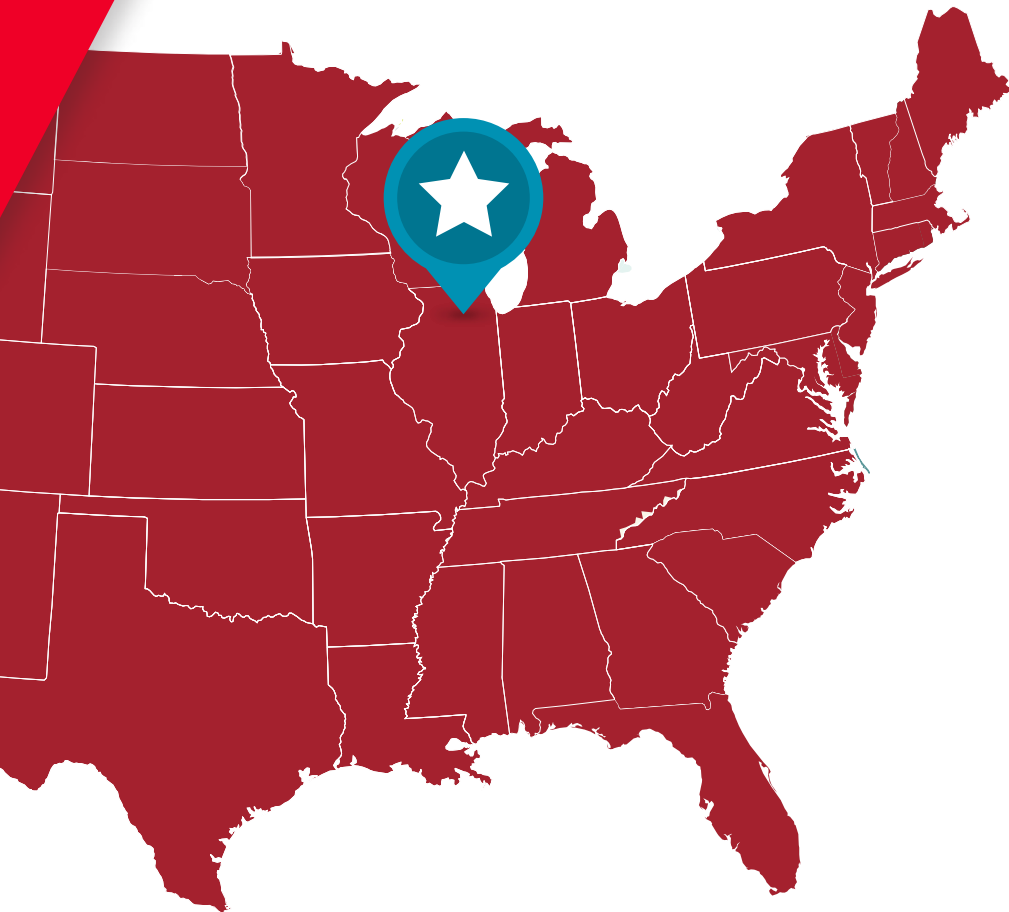
SEAN HENRICK, SIOR, CCIM
Vice Chair
+1 847 518 3215
sean.henrick@cushwake.com

9500 W. Bryn Mawr, Suite 600
Rosemont, Illinois 60018
main +1 847 518 9100
cushmanwakefield.com

©2023 Cushman & Wakefield. All rights reserved. The information contained in this communication is strictly confidential. This information has been obtained from sources believed to be reliable but has not been verified. NO WARRANTY OR REPRESENTATION, EXPRESS OR IMPLIED, IS MADE AS TO THE CONDITION OF THE PROPERTY (OR PROPERTIES) REFERENCED HEREIN OR AS TO THE ACCURACY OR COMPLETENESS OF THE INFORMATION CONTAINED HEREIN, AND SAME IS SUBMITTED SUBJECT TO ERRORS, OMISSIONS, CHANGE OF PRICE, RENTAL OR OTHER CONDITIONS, WITHDRAWAL WITHOUT NOTICE, AND TO ANY SPECIAL LISTING CONDITIONS IMPOSED BY THE PROPERTY OWNER(S). ANY PROJECTIONS, OPINIONS OR ESTIMATES ARE SUBJECT TO UNCERTAINTY AND DO NOT SIGNIFY CURRENT OR FUTURE PROPERTY PERFORMANCE.

JOLIET LOGISTICS PARK

MILLSDALE RD & ROUTE 53, JOLIET, IL



LOCATION HIGHLIGHTS



SITE PLAN

Up to ±151 acres for
sale or build-to-suit
development



RAIL SERVICE

Immediate access to
BNSF and Union Pacific
intermodal terminals



DISTRIBUTION

Reach 25% of the US
population within
one-day delivery



ACCESS

Strategically situated
between I-80 and I-55
for easy access



LABOR

Leverage a workforce
of over 1 million within a
45-minute drive



GOVERNMENT

Business friendly
local and county
government

JASON WEST, SIOR
Executive Vice Chair
+1 847 518 3210
jason.west@cushwake.com

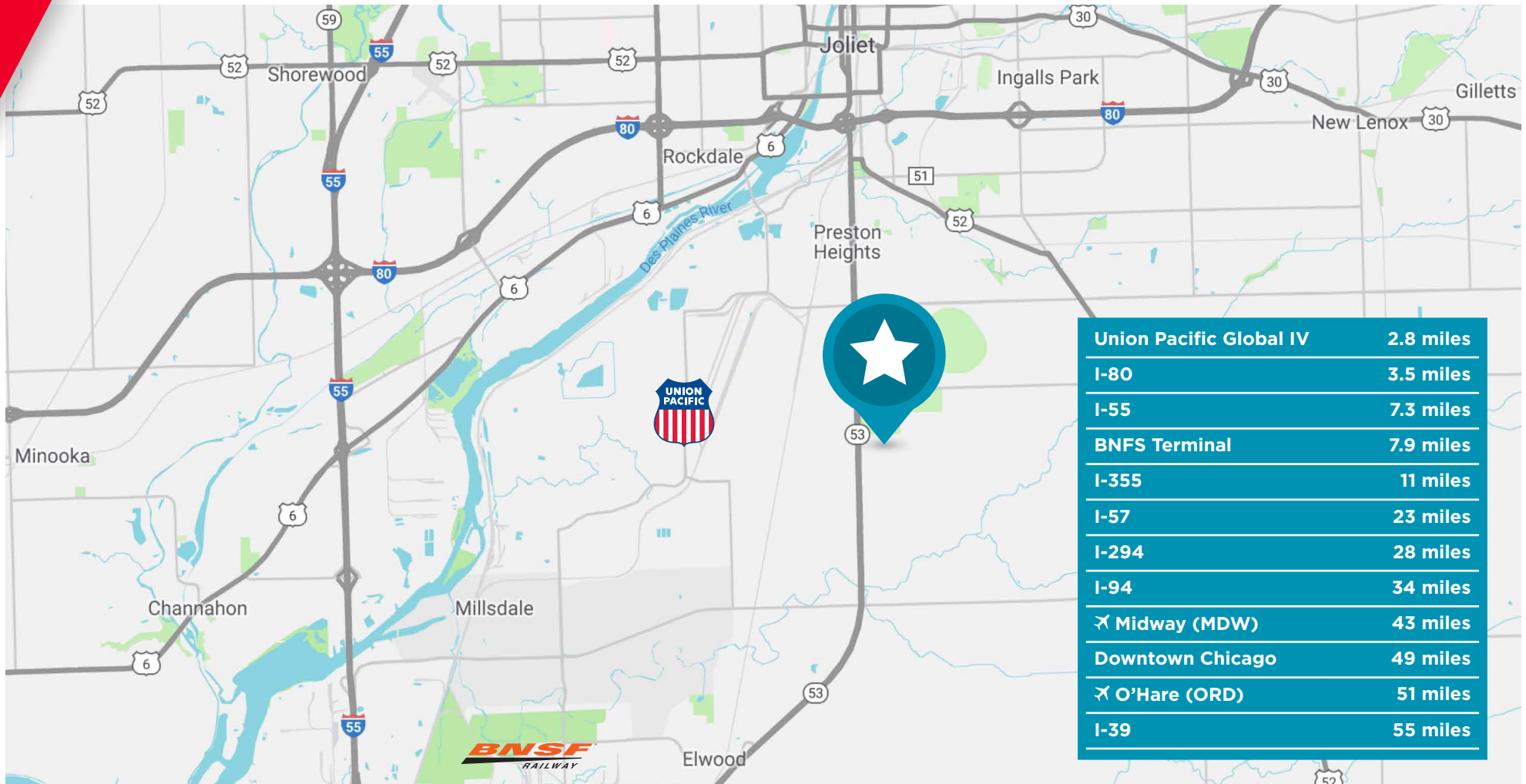
SEAN HENRICK, SIOR, CCIM
Vice Chair
+1 847 518 3215
sean.henrick@cushwake.com

9500 W. Bryn Mawr, Suite 600
Rosemont, Illinois 60018
main +1 847 518 9100
cushmanwakefield.com

©2023 Cushman & Wakefield. All rights reserved. The information contained in this communication is strictly confidential. This information has been obtained from sources believed to be reliable but has not been verified. NO WARRANTY OR REPRESENTATION, EXPRESS OR IMPLIED, IS MADE AS TO THE CONDITION OF THE PROPERTY (OR PROPERTIES) REFERENCED HEREIN OR AS TO THE ACCURACY OR COMPLETENESS OF THE INFORMATION CONTAINED HEREIN, AND SAME IS SUBMITTED SUBJECT TO ERRORS, OMISSIONS, CHANGE OF PRICE, RENTAL OR OTHER CONDITIONS, WITHDRAWAL WITHOUT NOTICE, AND TO ANY SPECIAL LISTING CONDITIONS IMPOSED BY THE PROPERTY OWNER(S). ANY PROJECTIONS, OPINIONS OR ESTIMATES ARE SUBJECT TO UNCERTAINTY AND DO NOT SIGNIFY CURRENT OR FUTURE PROPERTY PERFORMANCE.

JOLIET LOGISTICS PARK

MILLSDALE RD & ROUTE 53, JOLIET, IL



JASON WEST, SIOR
Executive Vice Chair
+1 847 518 3210
jason.west@cushwake.com

SEAN HENRICK, SIOR, CCIM
Vice Chair
+1 847 518 3215
sean.henrick@cushwake.com

9500 W. Bryn Mawr, Suite 600
Rosemont, Illinois 60018
main +1 847 518 9100
cushmanwakefield.com

©2023 Cushman & Wakefield. All rights reserved. The information contained in this communication is strictly confidential. This information has been obtained from sources believed to be reliable but has not been verified. NO WARRANTY OR REPRESENTATION, EXPRESS OR IMPLIED, IS MADE AS TO THE CONDITION OF THE PROPERTY (OR PROPERTIES) REFERENCED HEREIN OR AS TO THE ACCURACY OR COMPLETENESS OF THE INFORMATION CONTAINED HEREIN, AND SAME IS SUBMITTED SUBJECT TO ERRORS, OMISSIONS, CHANGE OF PRICE, RENTAL OR OTHER CONDITIONS, WITHDRAWAL WITHOUT NOTICE, AND TO ANY SPECIAL LISTING CONDITIONS IMPOSED BY THE PROPERTY OWNER(S). ANY PROJECTIONS, OPINIONS OR ESTIMATES ARE SUBJECT TO UNCERTAINTY AND DO NOT SIGNIFY CURRENT OR FUTURE PROPERTY PERFORMANCE.