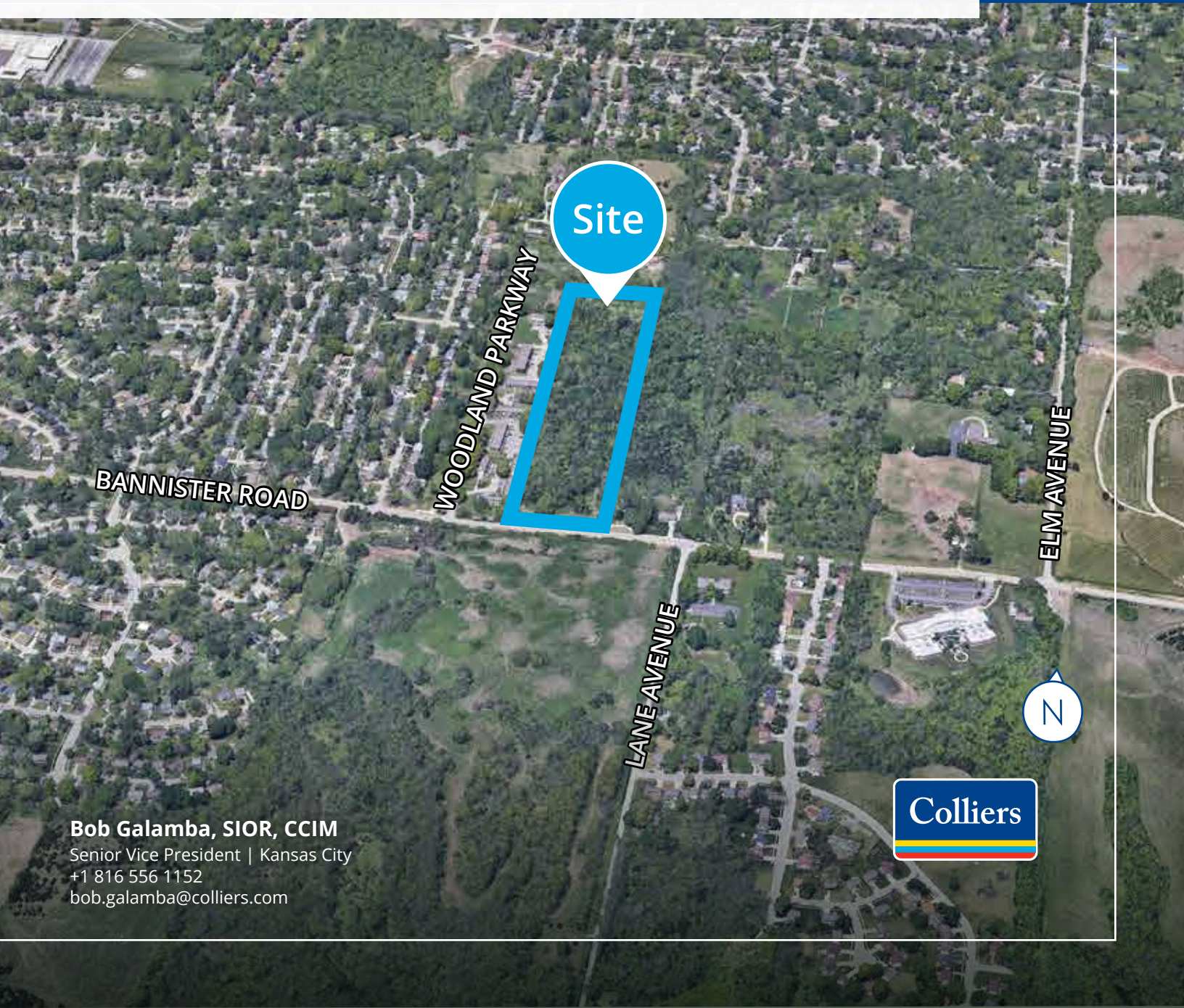


Land for Sale

10± Acres

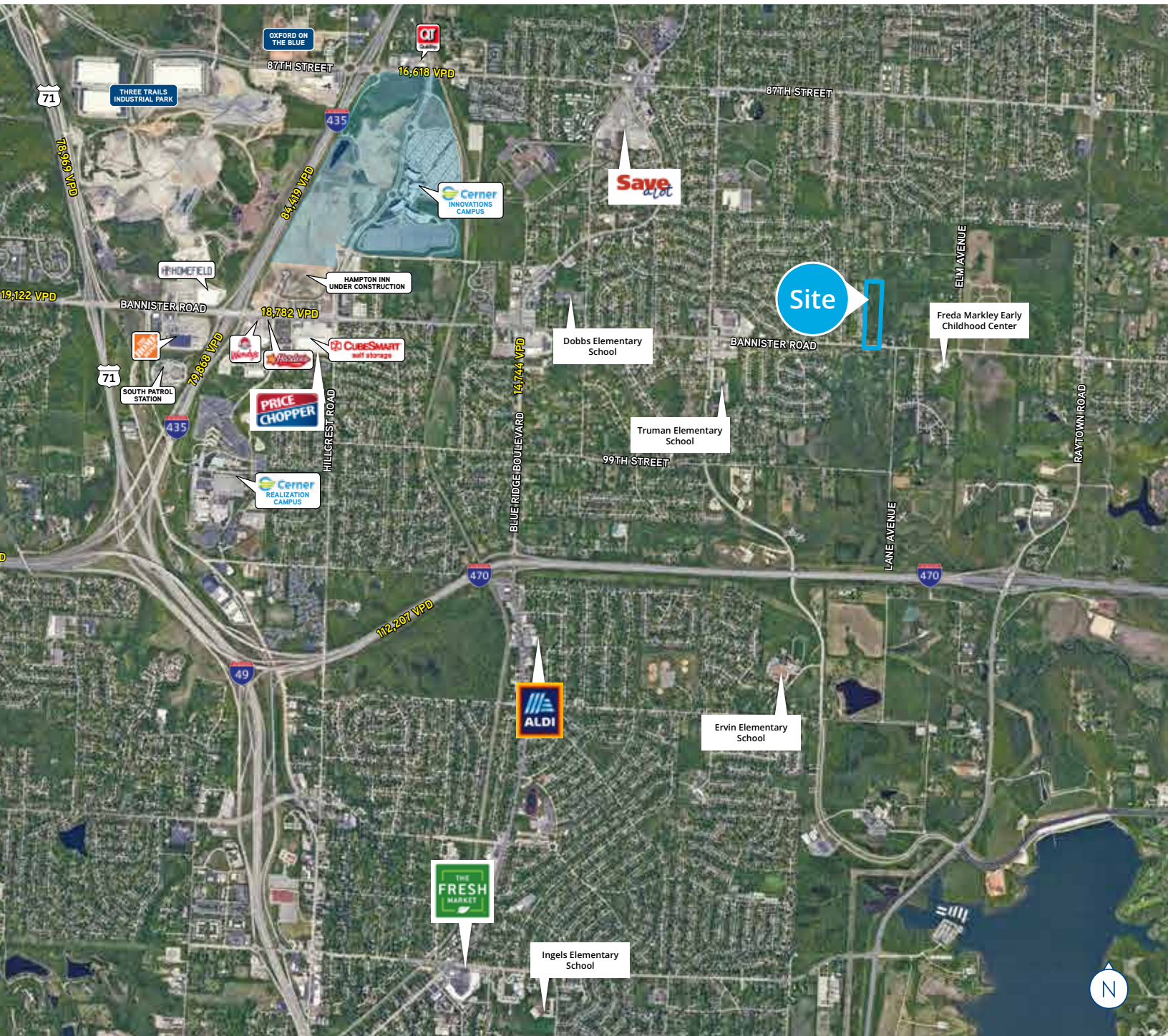
8906 & 8910 E. Bannister Road
Kansas City, Missouri



Bob Galamba, SIOR, CCIM
Senior Vice President | Kansas City
+1 816 556 1152
bob.galamba@colliers.com



Property Profile



Demographics



Population

3 mile	49,185
5 mile	116,697



Households

3 mile	20,008
5 mile	47,838



Median Household Income

3 mile	\$53,538
5 mile	\$57,932



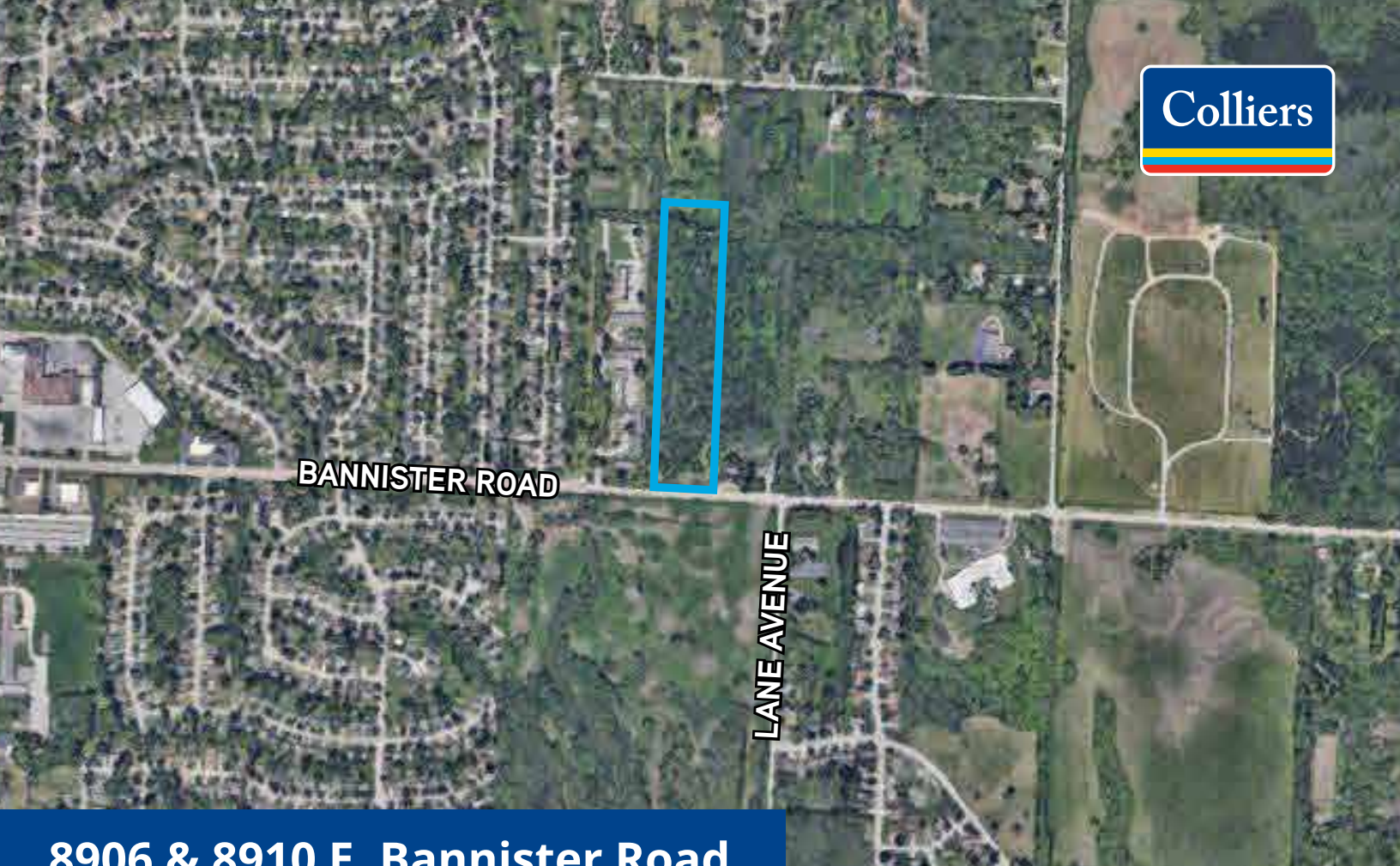
Per Capita Income

3 mile	\$28,331
5 mile	\$32,507



Median Age

3 mile	36.7
5 mile	38.4



BANNISTER ROAD

LANE AVENUE

8906 & 8910 E. Bannister Road

For Sale | \$250,000

Land Area	10± acres	Real Estate Taxes	\$438 (2021)
Neighborhood	Robandee South	Sewer	Gravity Service
School District	Hickman Hills C-1	Water	At E. Bannister Road
Council District	5th	Electric	E. Bannister Road frontage
Zoning	R-80 / AG	Fiber	Conduit along E. Bannister Road & Lane Avenue frontage
Parcel #	8906 E. Bannister Road 50-520-04-89-00-0-00-000	Topography	Gently rolling
	8910 E. Bannister Road 50-520-04-90-00-0-00-000		

Bob Galamba, SIOR, CCIM
Senior Vice President | Kansas City
+ 1 816 556 1152
bob.galamba@colliers.com

Colliers Kansas City
4520 Main Street, Suite 1000
Kansas City, Missouri
colliers.com/kansascity