



3102 FAY RD & W. GENESEE ST SYRACUSE, NY 13219



P R O P E R T Y F O R S A L E

Property Details

Prime 1.28-acre commercial lot located at the corner of 102 Fay Road and W Genesee Street in Syracuse, NY, offering 270 feet of frontage and proximity to major retailers. This site benefits from low-cost Solvay Municipal Electric and is designated for Commercial B and Neighborhood Commercial/Mixed Use under the Geddes & Solvay Comprehensive Plan.

- **1.28 acre lot with 270 feet of road frontage on West Genesee Street**
- **Access to low-cost Solvay Municipal Electric**
- **Zoned Commercial B for Neighborhood Commercial/Mixed Use per local comprehensive plan**
- **Ideal for retail, mixed-use, or redevelopment projects**
- **Nearby and surrounding retailers include: Wegmans, Planet Fitness, Family Dollar, Byrne Dairy**
- **High visibility and traffic volume at a well-traveled intersection near residential and commercial areas**



315.299.6292



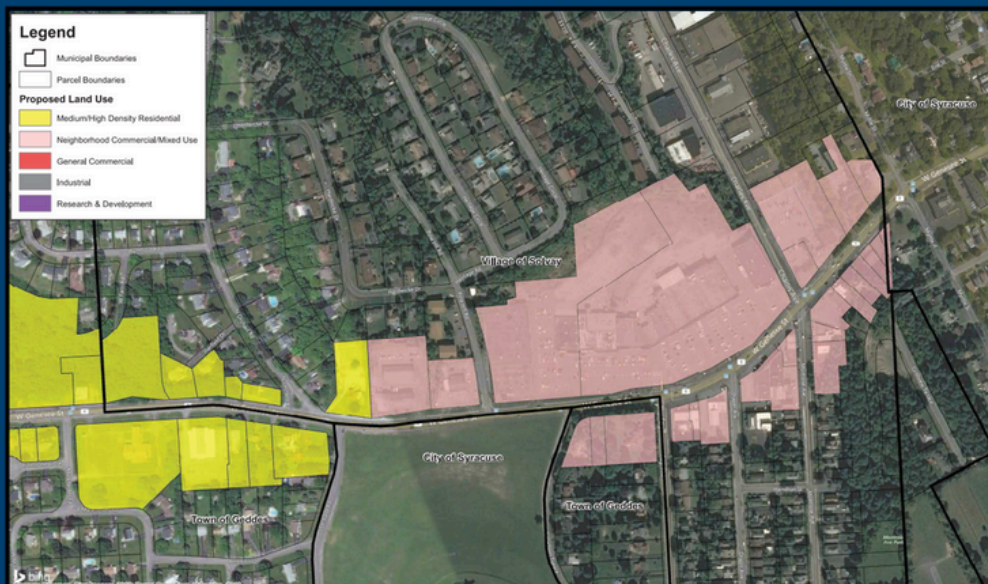
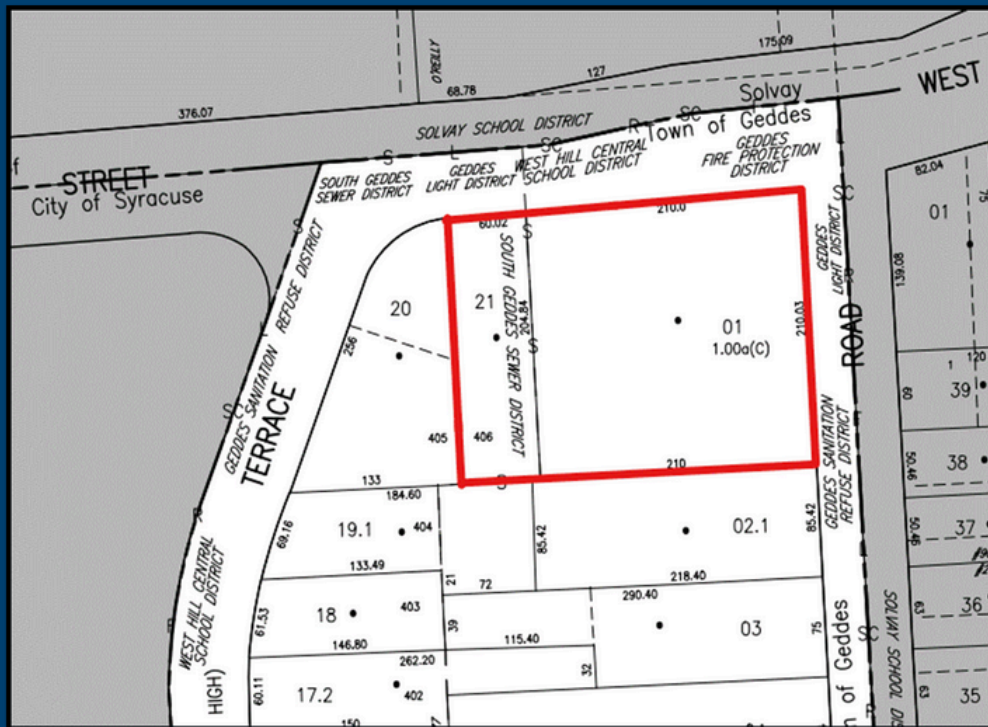
theiconcompanies.com



315.299.6292



admin@theiconcompanies.com



315.299.6292



theiconcompanies.com



315.299.6292



admin@theiconcompanies.com



315.299.6292



theiconcompanies.com



315.299.6292



admin@theiconcompanies.com