



BYRD REAL ESTATE
GROUP

904 N COLUMBUS | SPOKANE WA



Improvements:

Total Building:	37,643 +/- sf
Office:	13,500 +/- sf
Warehouse:	24,143 +/- sf
Grade Level OHD:	2-14'w x 12'h 2-14'w x 14'h
3 Phase Power:	1,000 amp 240/120 to be verified by electrician
Clear Height:	15' to bottom of beam

FOR LEASE
\$18,850/MO NNN

Site information:

Parcel:	35171.1704
Zoned:	Commercial
Site Size:	+/- 117,088 sf

GREG BYRD

509-326-8080

Cell 509-994-4345

Greg@byrdrealestategroup.com



Byrd Real Estate Group L.L.C

PRODUCING PROPERTY SOLUTIONS

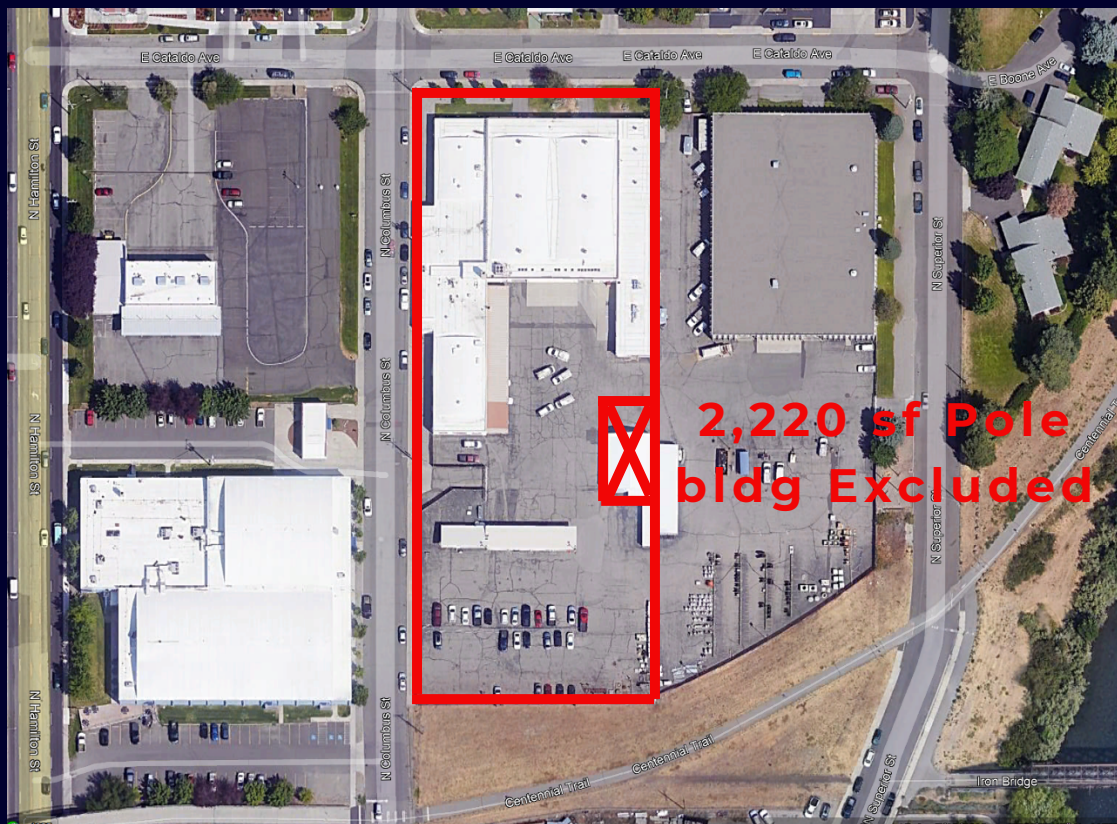
1912 N. Division St., Suite 201
Spokane, WA. 99207



All information is furnished by the Owner &/or Broker and believed to be complete and correct. The Owner &/or Broker, however, cannot be responsible for changes, errors, omissions or withdrawals of this offering. The above information is from sources deemed reliable but should be verified by parties that could be adversely affected by any statements or information. This is not an offering of sub-agency, with commission splits to be determined.

904 N COLUMBUS | SPOKANE WA

Large Secure Yard Area



GREG BYRD

509-326-8080

Cell 509-994-4345

Greg@byrdrealestategroup.com



Byrd Real Estate Group L.L.C

PRODUCING PROPERTY SOLUTIONS

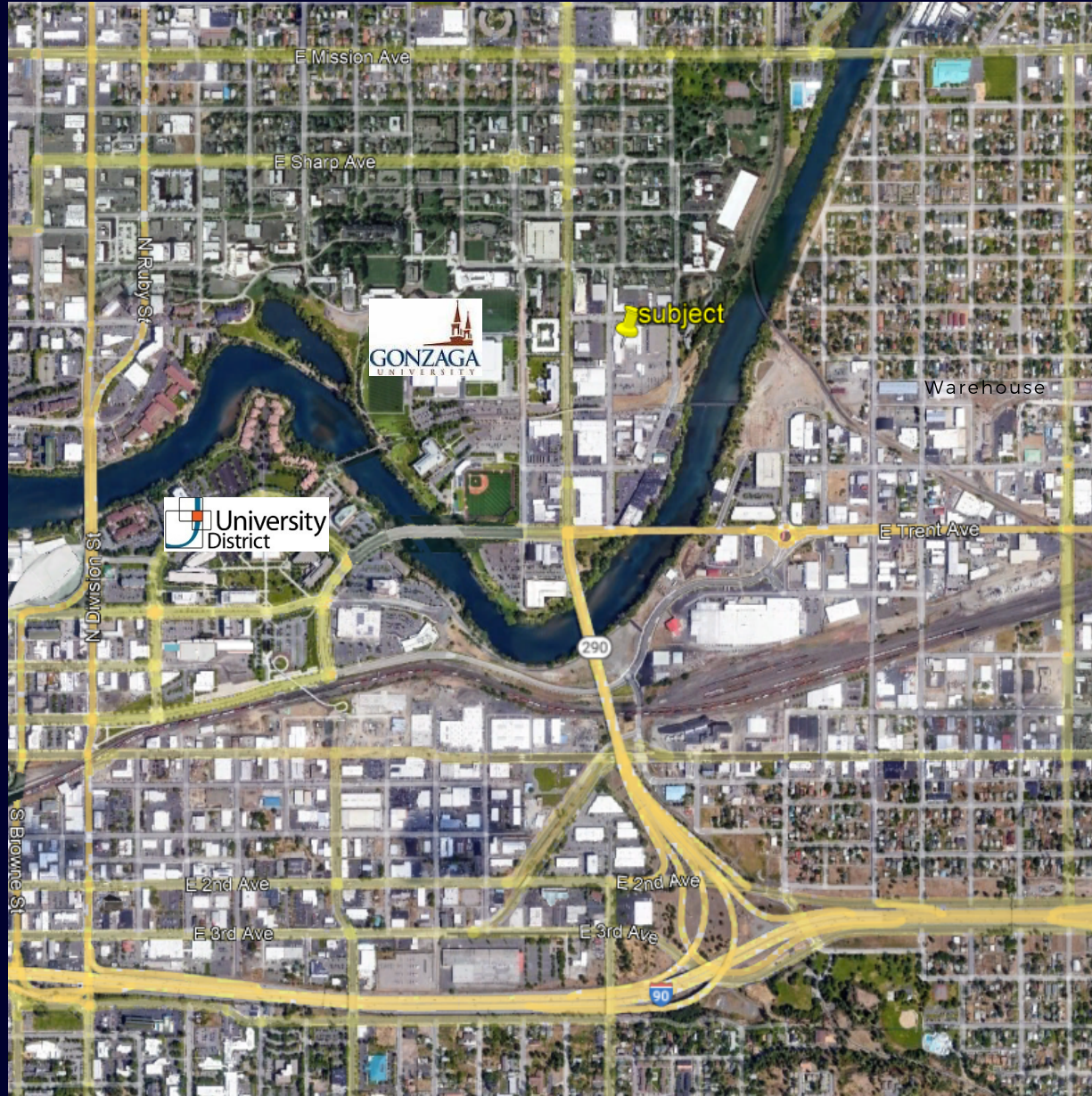
1912 N. Division St., Suite 201

Spokane, WA. 99207



All information is furnished by the Owner &/or Broker and believed to be complete and correct. The Owner &/or Broker, however, cannot be responsible for changes, errors, omissions or withdrawals of this offering. The above information is from sources deemed reliable but should be verified by parties that could be adversely affected by any statements or information. This is not an offering of sub-agency, with commission splits to be determined.

904 N COLUMBUS | SPOKANE WA



GREG BYRD

509-326-8080

Cell 509-994-4345

Greg@byrdrealestategroup.com

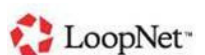


Byrd Real Estate Group L.L.C

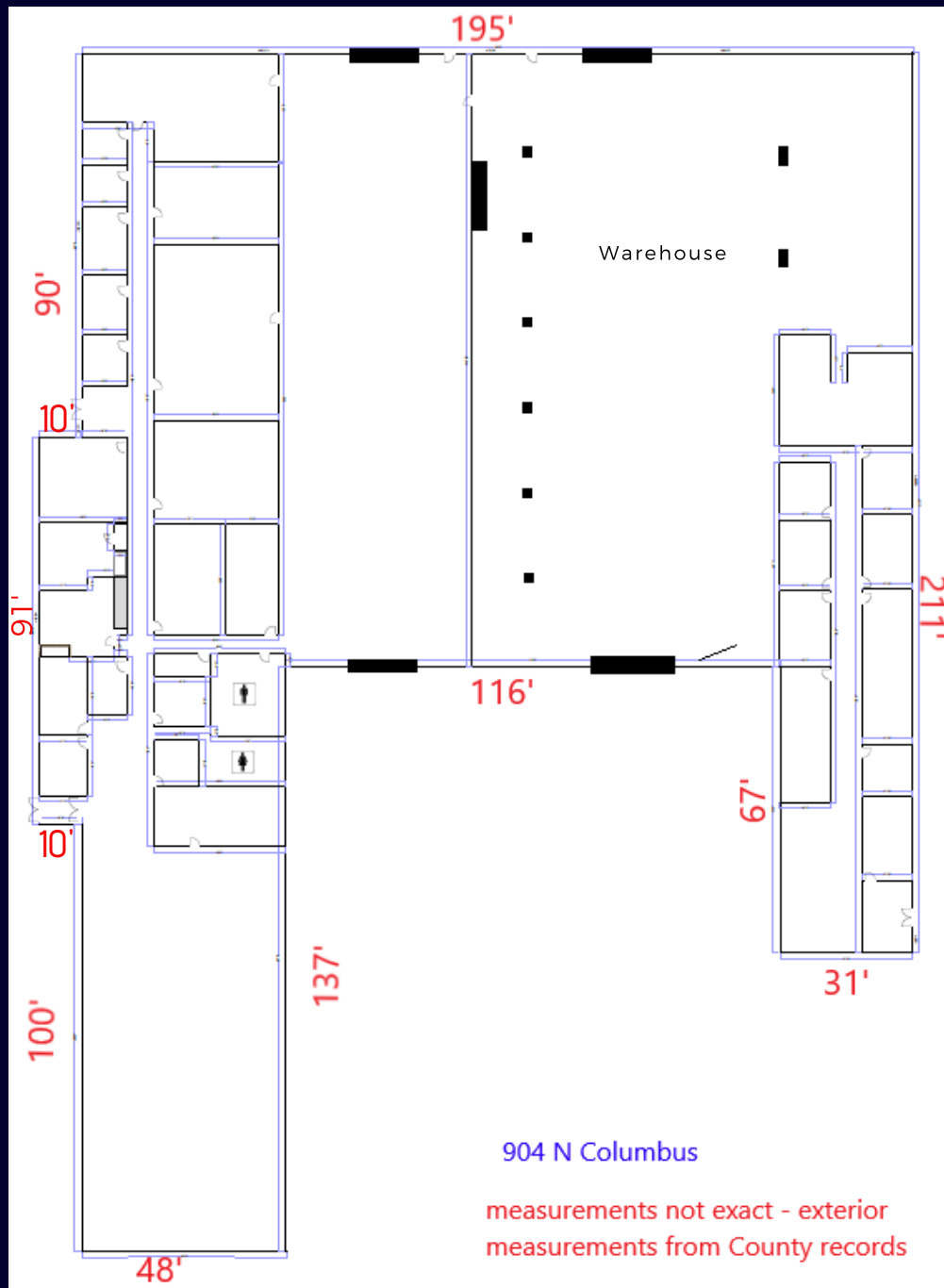
PRODUCING PROPERTY SOLUTIONS

1912 N. Division St., Suite 201

Spokane, WA. 99207



All information is furnished by the Owner &/or Broker and believed to be complete and correct. The Owner &/or Broker, however, cannot be responsible for changes, errors, omissions or withdrawals of this offering. The above information is from sources deemed reliable but should be verified by parties that could be adversely affected by any statements or information. This is not an offering of sub-agency, with commission splits to be determined.



GREG BYRD

509-326-8080

Cell 509-994-4345

Greg@byrdrealestategroup.com



Byrd Real Estate Group L.L.C

PRODUCING PROPERTY SOLUTIONS

1912 N. Division St., Suite 201

Spokane, WA. 99207

