



## KEY FEATURES

- 26+ acre parcel
- RS9 / RS20 Zoning
- Rapidly growing location
- Close proximity to RH Elementary School
- Mixture of hard and soft woods

LAND

FOR SALE | \$1,265,000

# KETCHIE CREEK PROPERTY

0 College St.  
Rural Hall, NC 27045

Located on College Street in Rural Hall, North Carolina, this rare 26+ acre parcel presents an exceptional opportunity in a rapidly growing community. Just five minutes from I-74 and conveniently close to Winston-Salem, the property offers both accessibility and small-town charm. With water and sewer available, the property is ready for quick development.

Situated near Rural Hall Elementary School, the land features a natural mix of hardwoods, softwoods, and a small stream, creating a beautiful and versatile landscape. Zoned RS9/RS20, or can be rezoned to allow for higher densities, this property is well-suited for a range of residential possibilities. This is an ideal investment in one of the area's emerging locations.

## LEARN MORE ABOUT THIS PROPERTY

### BRAD KLOSTERMAN, CCIM

BradK@commercialrealtync.com

336.793.0890, ext 106



## KETCHIE CREEK PROPERTY

### LOCATION

<b>Address</b>	College Street		<b>City</b>	Rural Haul	
<b>State</b>	NC	<b>Zip</b>	27045	<b>County</b>	Forsyth

### PROPERTY DETAILS

<b>Property Type</b>	Land	<b>Acres ±</b>	26.49
----------------------	------	----------------	-------

### UTILITIES

<b>Electrical</b>	Duke	<b>Sewer</b>	County	<b>Water</b>	County
-------------------	------	--------------	--------	--------------	--------

### TAX INFORMATION

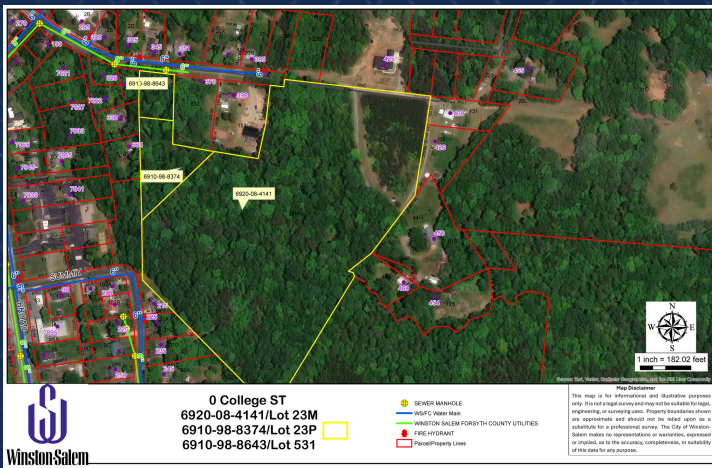
<b>Zoning</b>	RS9 (City) / RS20 (County)	<b>Tax Pin</b>	6920-08-4141, 6910-98-8374, & 6910-98-8643
---------------	----------------------------	----------------	--

### PRICING & TERMS

<b>Price</b>	\$1,265,000
--------------	-------------

LAND

FOR SALE | \$1,265,000



### LOCATION FEATURES

- Five minutes from I-74
- Conveniently close to Winston-Salem
- Rapidly growing location
- Close proximity to RH Elementary School