

FOR LEASE

PLEASANTON PARK

*±2,280 SF - ±6,266 SF Office Suites
Available For Lease in Pleasanton*

6601 OWENS DR, PLEASANTON, CA 94588

6601

KIDDER.COM

km Kidder
Mathews



SUITE AVAILABILITY

SUITE 270 ±2,280 RSF

SUITE 238 ±3,245 RSF

SUITE 150 ±6,266 RSF

PROPERTY HIGHLIGHTS

Excellent access to I-580/I-680

Comcast and fiber to building

Walking distance to restaurants,
and retail shops

Dublin/Pleasanton BART station
short walk away

Excellent parking ratio 4/1,000

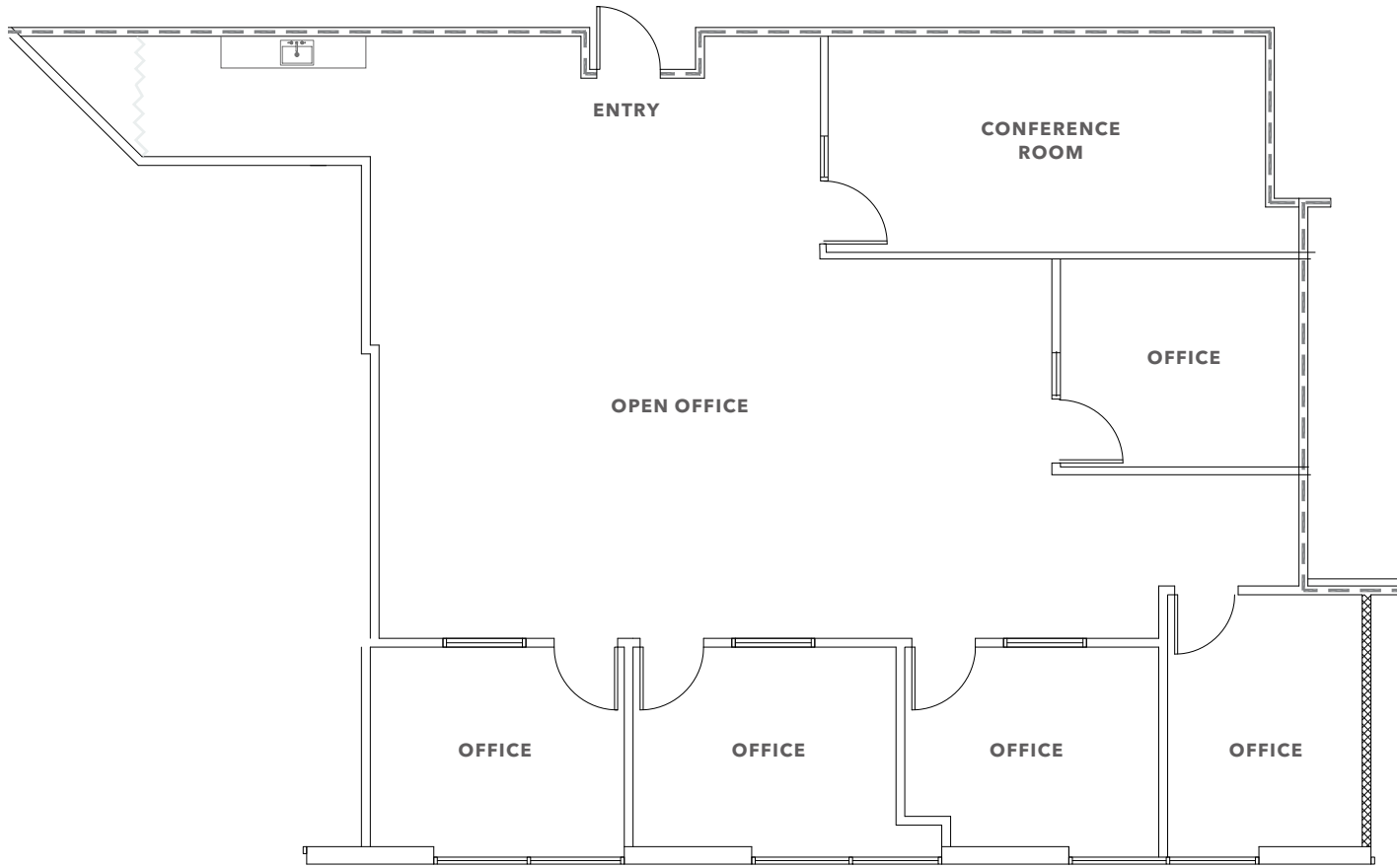
SIMON VOGT, SIOR

925.905.1112

simon.vogt@kidder.com

LIC N° 01879314

SUITE 270



±2,280 RSF

AVAILABLE

CALL

FOR LEASE RATE

NOW

AVAILABLE

FLOOR PLAN NOT TO SCALE

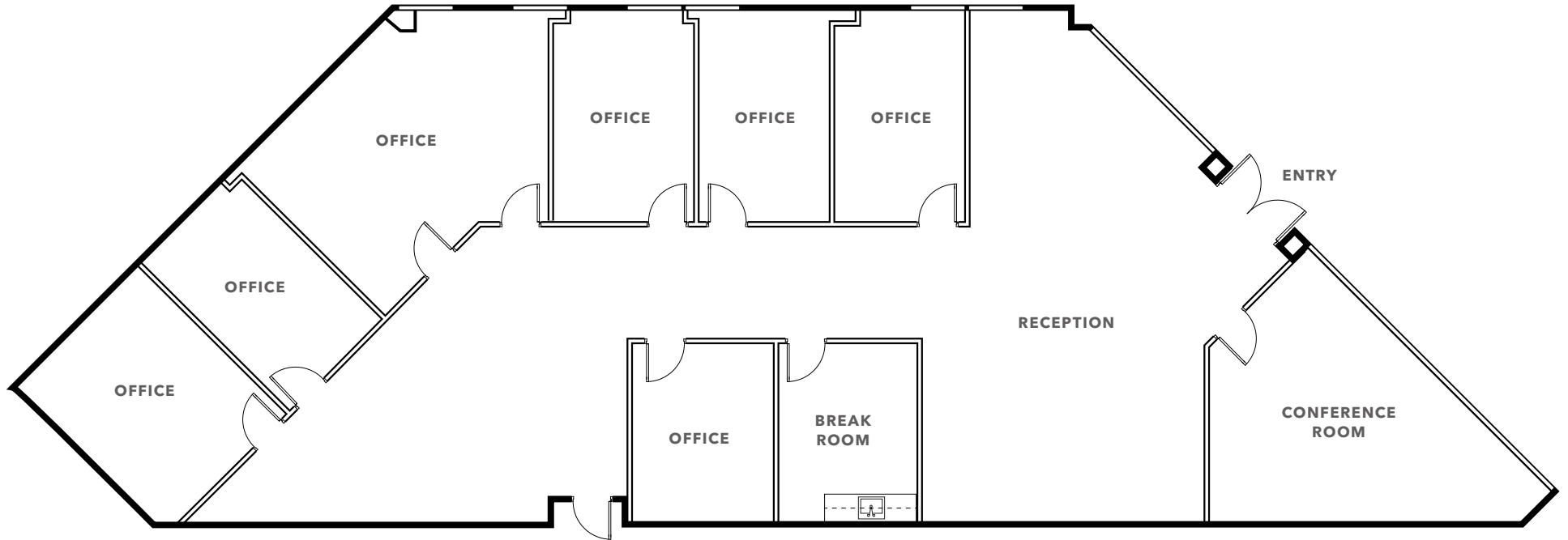
6601 OWENS DR

SUITE 238

±3,245 RSF
AVAILABLE

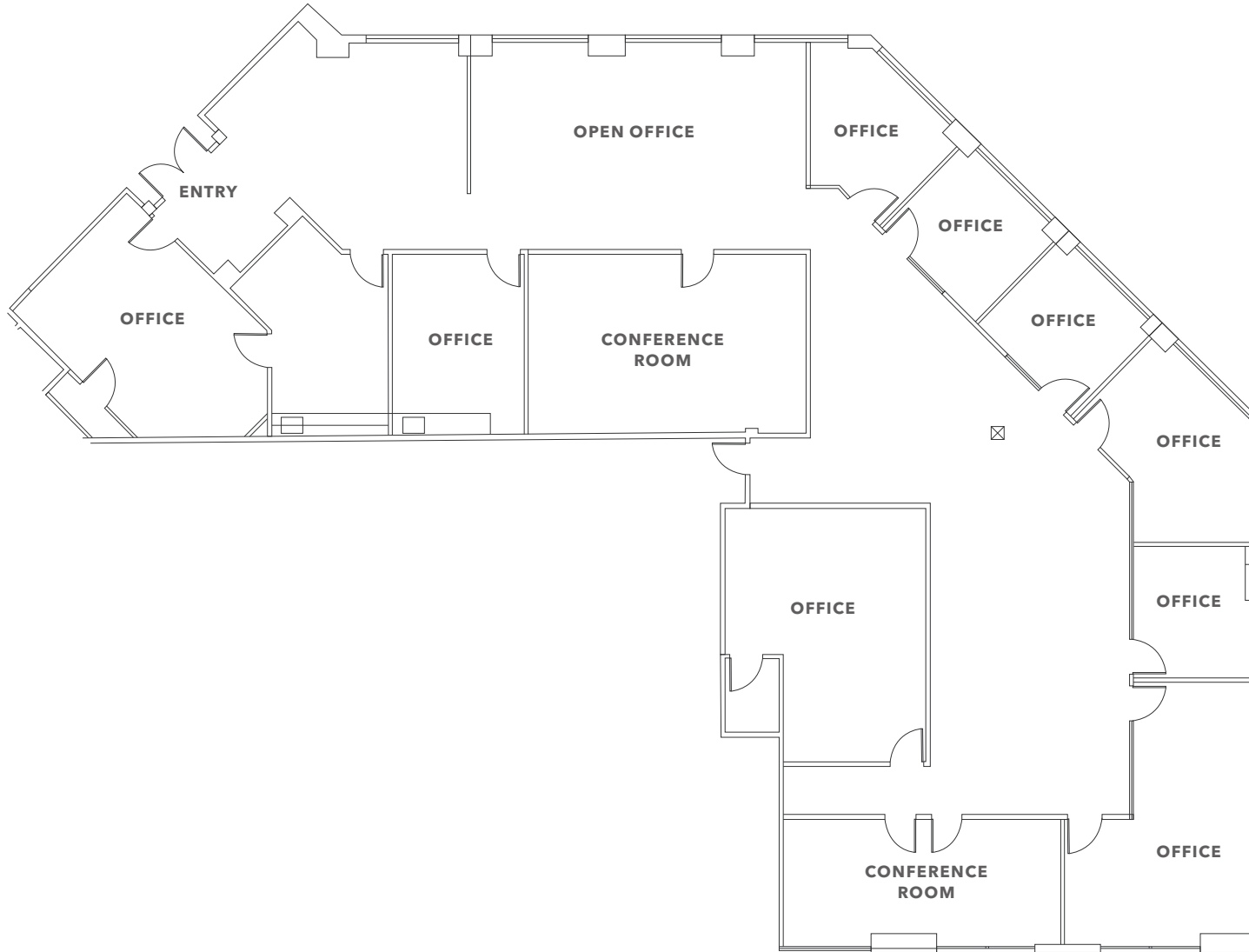
CALL
FOR LEASE RATE

NOW
AVAILABLE



FLOOR PLAN NOT TO SCALE

SUITE 150



±6,266 RSF
AVAILABLE

CALL
FOR LEASE RATE

NOW
AVAILABLE

FLOOR PLAN NOT TO SCALE



6601 OWENS DR

For more information on this property, please contact

SIMON VOGT, SIOR
 925.905.1112
 simon.vogt@kidder.com
 LIC N° 01879314

KIDDER.COM

This information supplied herein is from sources we deem reliable. It is provided without any representation, warranty, or guarantee, expressed or implied as to its accuracy. Prospective Buyer or Tenant should conduct an independent investigation and verification of all matters deemed to be material, including, but not limited to, statements of income and expenses. Consult your attorney, accountant, or other professional advisor. All Kidder Mathews designs are the sole property of Kidder Mathews. Branded materials and layouts are not authorized for use by any other firm or person.

