

# BOARDWALK PLAZA

PALM DESERT OFFICE SUITES FOR LEASE

41865 BOARDWALK | PALM DESERT, CALIFORNIA 92211

*Professionally maintained office suites with natural light, signage visibility, and convenient access to I-10 and Highway 111*



## A DISTINCTIVE PROFESSIONAL SETTING

Boardwalk Plaza offers well-located office suites in one of Palm Desert's most established business corridors. With strong street presence, abundant glass lines, and a clean professional image, the property is ideal for medical, office, financial, consulting, wellness, and service-oriented tenants.

## PROPERTY HIGHLIGHTS

-  Elevator-served professional office building
-  Large windows with abundant natural light
-  Excellent Cook Street / Hovley Lane location
-  Convenient access to Interstate 10 & Highway 111
-  Flexible suite configurations
-  Diverse professional tenant mix
-  Strong building ownership

## AVAILABLE SUITES

SUITE	SIZE	LOCATION	NOTES
<b>113</b> <b>LEASED</b>	737 SF	Ground Floor	Direct exterior entry, private restroom
<b>119</b>	597 SF	Ground Floor	High ceilings
<b>205</b>	930 SF	Second Floor	Outstanding views
<b>214</b>	816 SF	Second Floor	Fantastic views

LEASE RATE

**\$1.35**

+ \$.49 triple net

FOR LEASING  
INFORMATION



STEVE LYLE  
(760) 578-9927  
stevelyle@cbclyle.net  
CalDRE #00762911



ARLEY RYAN  
(630) 660-9376  
arleyryan@cbclyle.net  
CalDRE #02198855

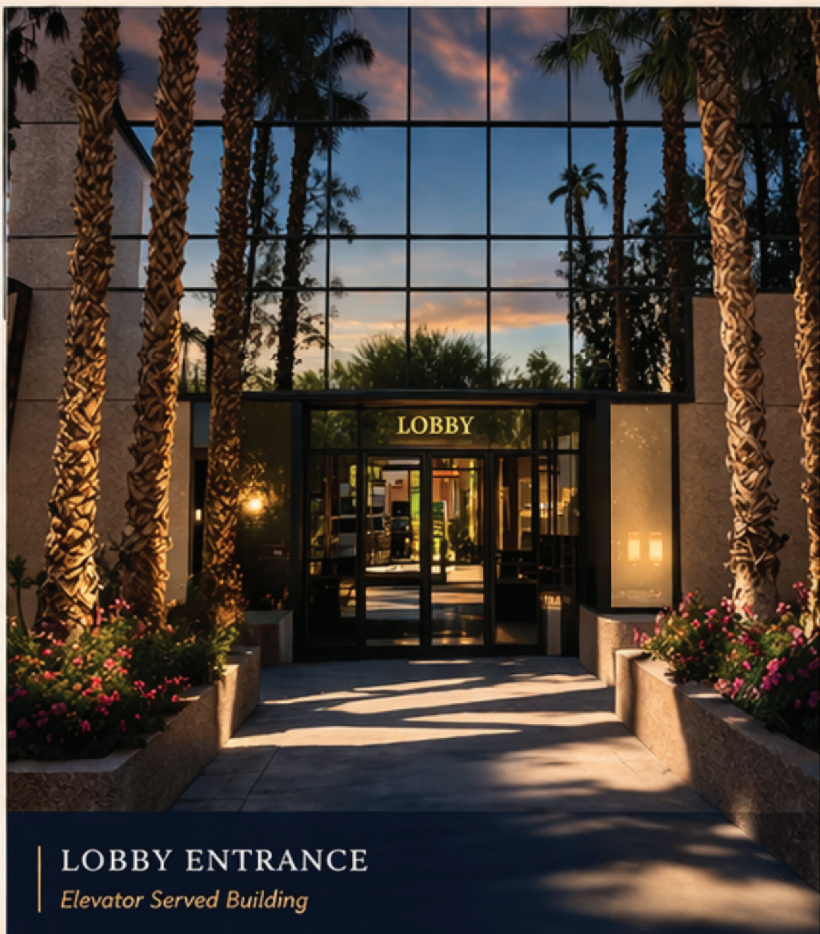


COLDWELL BANKER  
COMMERCIAL  
LYLE & ASSOCIATES  
DRE #01460412

# BOARDWALK PLAZA

## PALM DESERT OFFICE SUITES FOR LEASE

41865 BOARDWALK | PALM DESERT, CALIFORNIA 92211



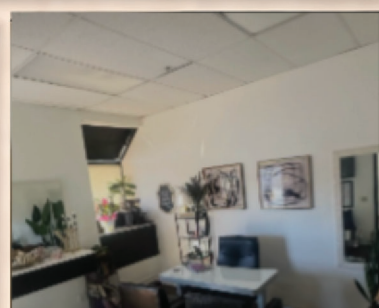
**LOBBY ENTRANCE**  
*Elevator Served Building*



**SUITE 214**  
816 SF | Second Floor  
*Bright Interior & Efficient Layout*



**SUITE 205**  
930 SF | Second Floor  
*Abundant Natural Light & Views*



**SUITE 119**  
597 SF | Ground Floor  
*Private Entry • Soaring Ceilings  
Efficient Executive Space*

### PRIME PALM DESERT LOCATION



### IN THE HEART OF PALM DESERT

Ideally located near I-10 and Highway 111 on Cook Street, Boardwalk Plaza offers outstanding visibility, convenience, and proximity to the JW Marriott—surrounded by a strong mix of professional services and amenities.

FOR LEASING  
INFORMATION



**STEVE LYLE**  
(760) 578-9927  
stevelyle@cbclyle.net  
CalDRE #00762911



**ARLEY RYAN**  
(630) 660-9376  
arleyryan@cbclyle.net  
CalDRE #02198855



**COLDWELL BANKER  
COMMERCIAL**  
LYLE & ASSOCIATES, LP  
DRE #01462012