



Avison Young - Raleigh-Durham | 5440 Wade Park Boulevard, Suite 200 | Raleigh, NC 27607

FOR LEASE

# Arena Centre

1511 Sunday Drive, Raleigh, NC 27607

**AVISON  
YOUNG**

# Property highlights

## Offering Summary

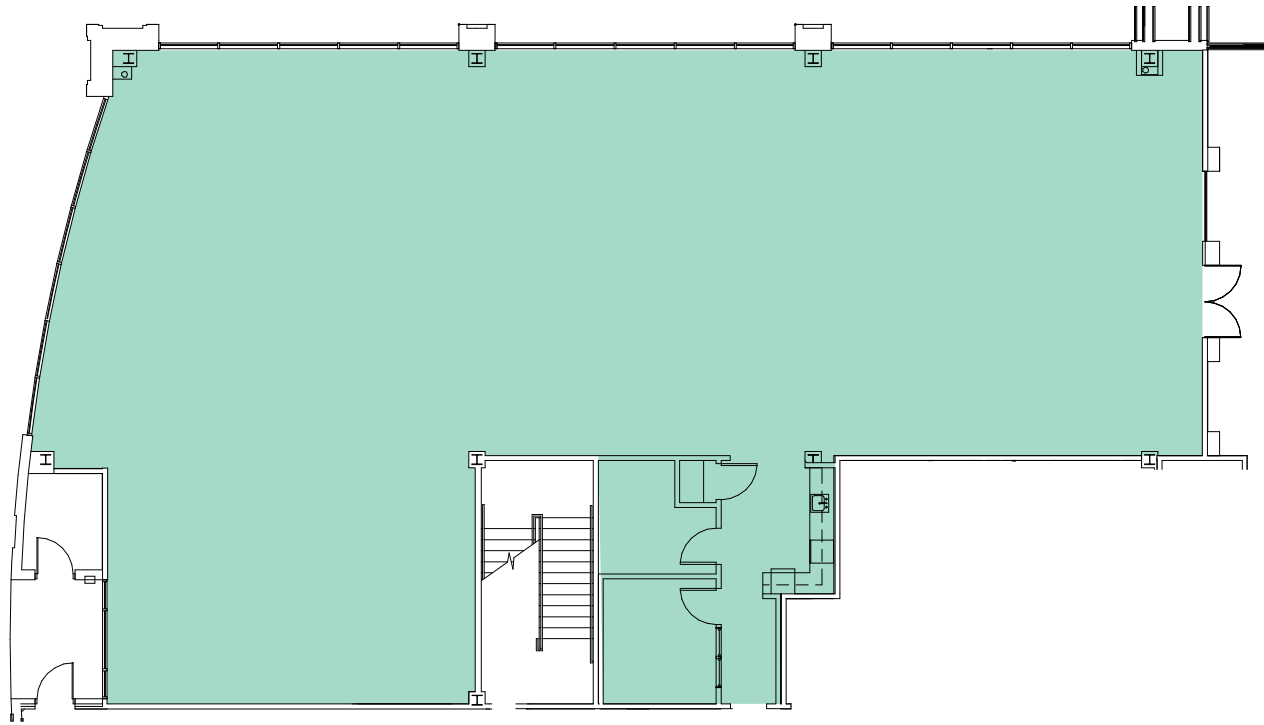
Lease Rate: \$32.00/sf, Full Service

Building Size: 62,000 SF

Available SF: 3,095 - 9,387 SF

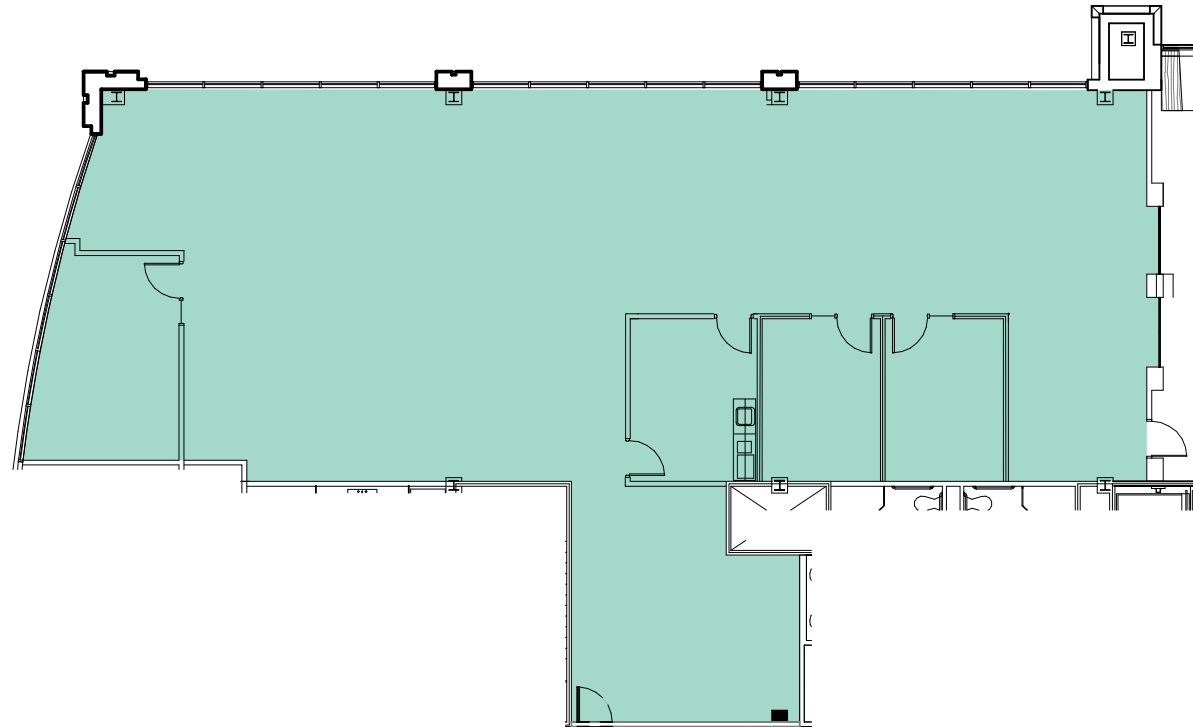
- New spec space available
- Common area conference room with TV, seats 24 and expandable to 48
- Building signage opportunity for larger square foot tenants
- Floor-to-ceiling glass provides abundant natural light
- Professional management and maintenance
- Well-appointed two-story atrium lobby
- Central location with easy access to I-40, I-440 Beltline, I-540, Research Triangle Park, RDU International Airport, and Cary





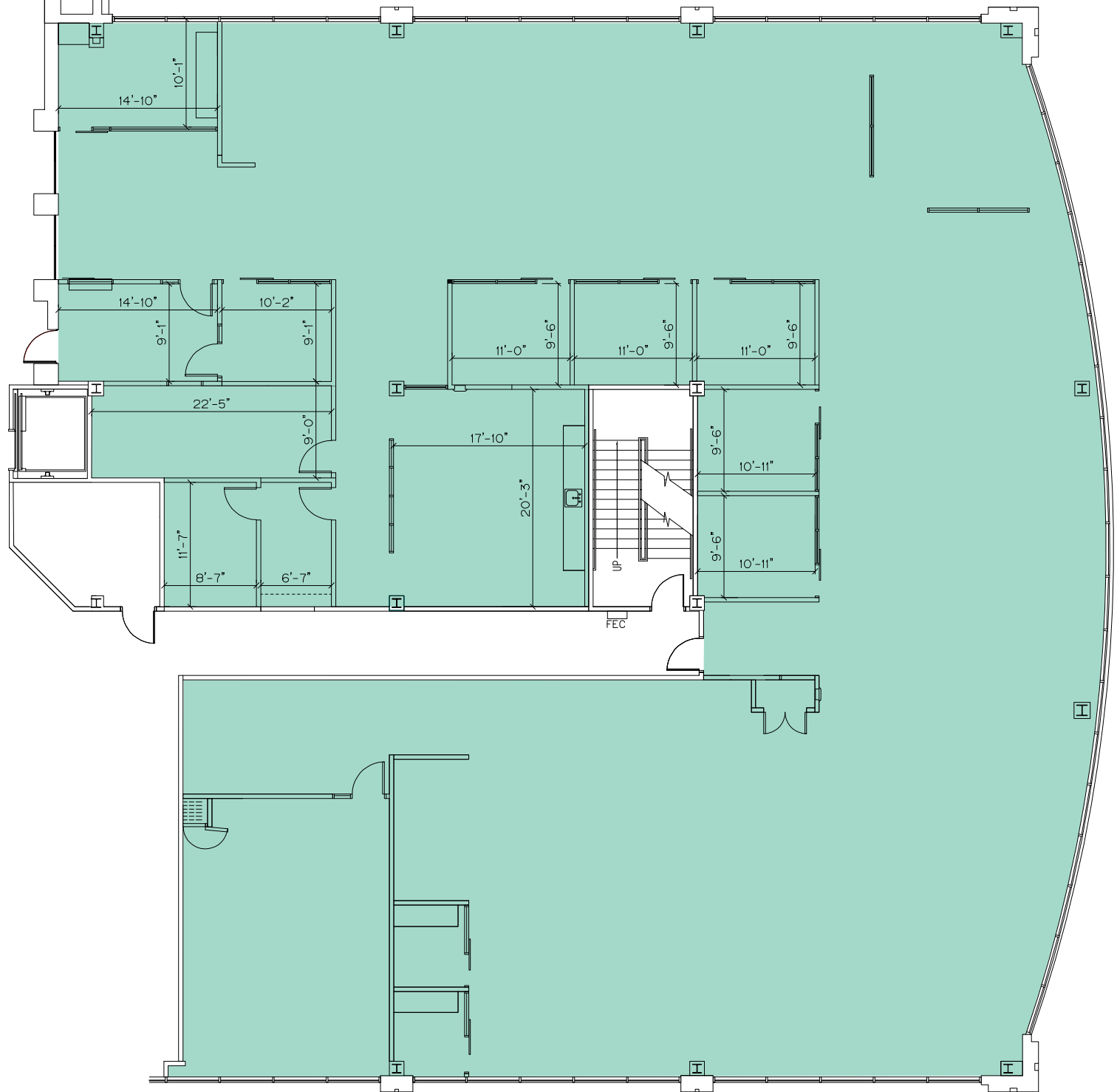
Suite 120 - 4,877 sf

# Floor Plans

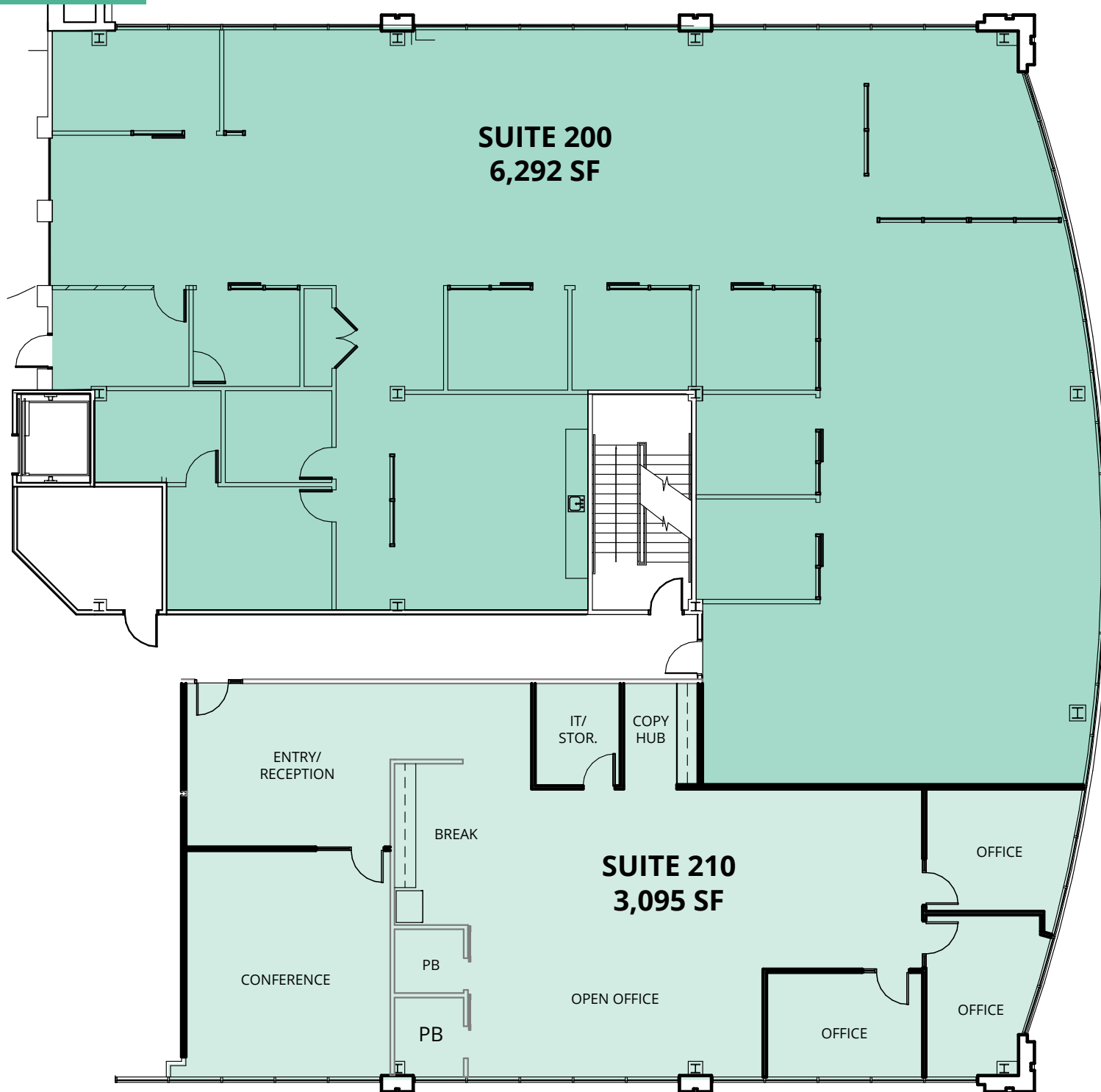


Suite 220 - 4,068 sf (*New spec space*)

# Floor Plans



# Floor Plans

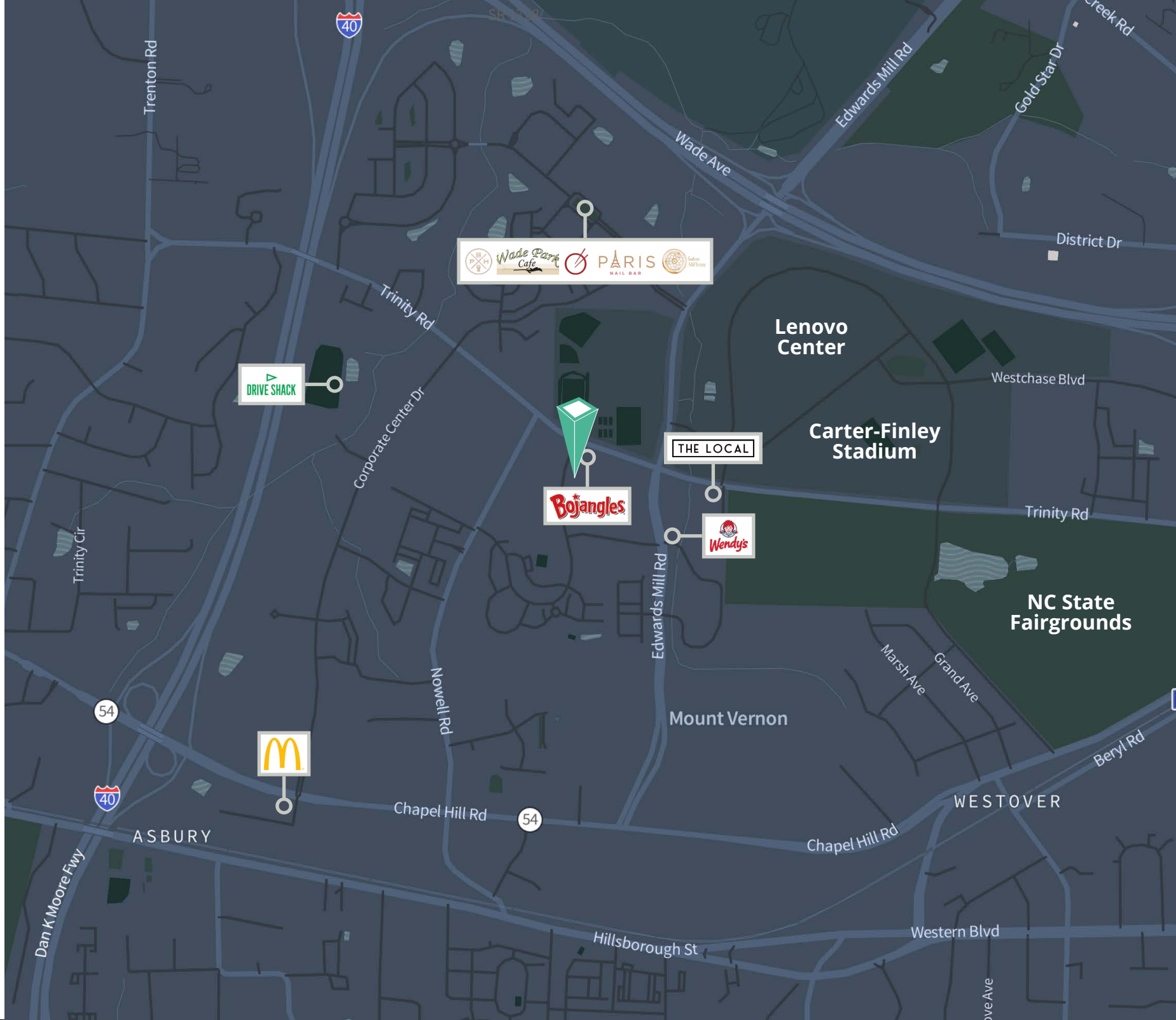


**AVISON  
YOUNG**



**Spec Suite 220**

# Retailer map



# Let's talk.

**Michael Vulpis**  
Senior Vice President, Office Leasing & Sales  
D 919 420 1562  
[michael.vulpis@avisonyoung.com](mailto:michael.vulpis@avisonyoung.com)

Avison Young - Raleigh-Durham  
5440 Wade Park Boulevard, Suite 200 | Raleigh, NC 27607

© 2025. Avison Young - Raleigh-Durham. Information contained herein was obtained from sources deemed reliable and, while thought to be correct, have not been verified. Avison Young - Raleigh-Durham does not guarantee the accuracy or completeness of the information presented, nor assumes any responsibility or liability for any errors or omissions therein.

**AVISON  
YOUNG**