



**474 BYPASS 72 NW** GREENWOOD . SOUTH CAROLINA 29649

*for lease:*

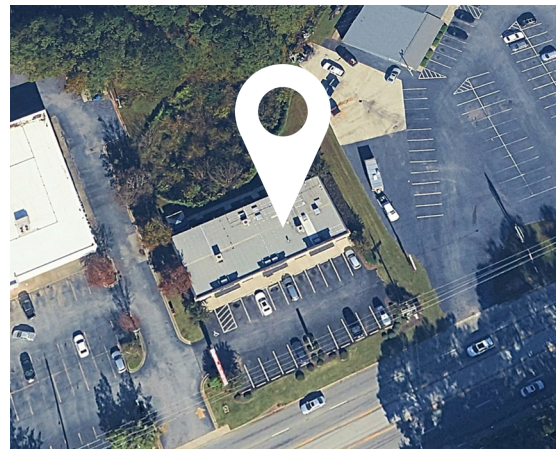
± 3,518 SF Retail Space or Medical Office

\$30 SF NNN

TI Allowance Available

*property highlights:*

- Former Urgent Care
- Positioned in the Main Retail Corridor
- Co-tenancy with CORA Physical Therapy
- Zoning: GC General Commercial
- Located across from Publix
- VPD: ± 24,697



GREENWOOD COUNTY TAX MAP NO.6846-137-618

*exclusively listed by:*

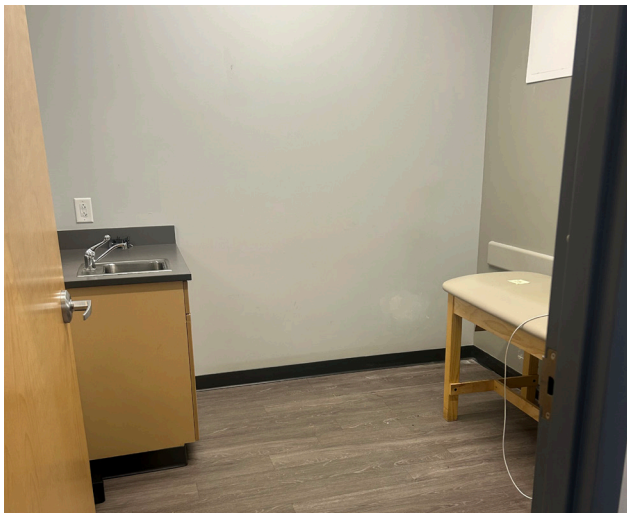
REYNOLDS FLOWE | reynolds@pintailcre.com | 864.980.8951

BRIAN SCURLOCK | bscurlock@pintailcre.com | 803.752.5656





*interior images:*





# 474 BYPASS 72 NW GREENWOOD . SOUTH CAROLINA 29649

*surrounding area map:*

